



PRRST STD
U.S. POSTAGE
PAID
Des Moines, IA
Permit No. 589
ECRWSS

Postal Customer

Your ad could be read in over **30,000** homes and businesses in West Des Moines.



Contact WDM Magazine at wdm.mag@gmail.com or (515) 222-3598. Ask for a media kit and more information on how you can **increase YOUR business** by being a sponsor in the WDM Magazine.





WDM magazine

Issue 35 | Winter/Spring 2015

AN INNOVATIVE LINK TO NEWS AND ACTIVITIES FOR THE CITY OF WEST DES MOINES

10

Winter in
WDM

17

Upgrading
City Facilities

p1

WDM Parks
& Recreation

TECHNOLOGY WORKERS ARE IN HIGH DEMAND!

The DMACC West Des Moines Campus Network Technology program can get you there in **only 2 years** at very low tuition.

Computers, smartphones, home phones, televisions, DVD players, tablets and digital devices of all descriptions are increasingly connected to a data-driven network. Businesses also rely on information networks, and the current trend toward “cloud computing” will continue to increase the importance of high-performance data networks and professionals to build and operate them.

- ▶ Quick Job Placement
- ▶ High Pay
- ▶ Rewarding Jobs
- ▶ High-Demand Profession



Get your **ENTIRE**
two-year **TRANSFER**
DEGREE at the West
Des Moines Campus.
Enroll today!

DMACC West Des Moines Campus



5959 Grand Ave.
515-633-2407

Celebrate!
INNOVATION
DES MOINES AREA COMMUNITY COLLEGE WEST CAMPUS

DMACC
DES MOINES AREA
COMMUNITY COLLEGE
Life's Calling™

2015-01-23

www.dmacc.edu/west/telecom/welcome.asp

CONTENTS

WDM NEWS

- 4 The Mayor's Column**
- 5 WDM City Officials
Boards/Commissions**
- 6 Upcoming Changes to Pet Licensing**
- 8 West Des Moines Water Works**
- 10 Winter In West Des Moines**
- 13 Tree Maintenance**
- 14 Public Works Maintaining The
City's Infrastructure**
- 16 Storm Damage to Trees**
- 17 Upgrading City Facilities For
Better Efficiency**
- 18 End of Yard Waste Season and
Christmas Tree Collection
Holiday Recycling**
- 19 Recyclables: Don't Bag 'Em!
Used Cooking Oil
Metro Hazardous Waste Drop-Off**
- 20 Protecting Your Home During The
Holiday Season**
- 21 R.A.D. Systems of Self Defense**
- 22 WDM Resident Guide**
- 43 From The City Manager**

WDM ACTIVITIES

- P1 Parks & Recreation Activities**
- 24 Library Activities**
- 34 Human Services Programs**

For over **100 years**,
HR Green
has focused on business
accountability through
every step of the journey:

**DESIGN
CONSTRUCTION
OWNERSHIP
AND OPERATION**

Learn more at HRGreen.com



5525 Merle Hay Rd, Suite 200
Johnston, IA 50131
Phone 515.278.2913



WEST DES MOINES CITY HALL

4200 Mills Civic Parkway
West Des Moines, Iowa 50265
(515) 222-3600





THE Mayor's Column

Human Services Department

Happy Holidays! It's hard to imagine that the holidays are nearly upon us, but after a great year, we are ready to celebrate and welcome the season. As the season of giving approaches, I'd be remiss if I didn't take the time to highlight one of our unique departments – the West Des Moines Human Services Department – and the essential work its staff and volunteers do.

Human Services was created 35 years ago and was the first of its kind in Iowa. The department provides assistance and outreach for seniors, people with disabilities and low-income citizens. It strives to “provide opportunities for individuals to improve and enhance their quality of life and sense of community through programs and services available.”

The department is staffed by 18 employees (nine full-time) and more than 50 volunteers, many whom do so on a weekly basis. The department's impact is large and positive. The direct assistance it delivers to those in need is funded by grants and donations, both monetary and in-kind, from individuals, businesses, churches and other organizations.

Although West Des Moines is regarded as an affluent community, recent statistics show that about 6 percent of our residents' incomes are at or below the federal poverty guidelines. The Human Services Department works with these struggling families to find places to live, money for rent and utility payments and reliable transportation.

Through the efforts of staff and volunteers, Human Services also helps provides food and clothing to approximately 350 families through donations and our partnership with Des Moines Area Religious Council. Our Housing Solutions Program provides housing and support services to families in six houses in the Valley Junction area. With three buses and a van, more than 1,400 rides per month are provided to the elderly and disabled, helping them make necessary appointments or a meal at the Senior Center.

West Des Moines Human Services administers several programs throughout the year including the Low-Income Home Energy Assistance Program (LIHEAP) for the western suburbs. This federally-funded program offers financial support to qualifying low-income households who need help with paying their heating bill. Additionally, the department hosts a school supply drive for children in low-income homes. This past August, approximately 375 low-income children received donated school supplies. Human Services also partners with the West Des Moines School District to offer a free summer lunch. This past summer, 4,498 such meals were served at Legion Park.

Holiday Assistance is offered through programs including the Food Basket, Adopt-a-Family, and Toyland, all made possible through generous donations from businesses and private individuals in our community.

In October, the Human Services Department will be moving its offices from 318 Fifth Street to a newly renovated building at 139 Sixth Street. The new location is just across the street from the new Polk County Senior Center, which will be convenient for many Human Services clients. The increased space will allow us to provide service more efficiently and perhaps even expand our programs.

The City Council and I are proud of our long-standing commitment to serving the entire community of West Des Moines. As a participant in the annual “Sunday Supper in our Town,” I encourage you to also consider how your skills, time or extra efforts can help our community. More information about the West Des Moines Human Services Department can be found at www.wdm.iowa.gov or follow Human Services on Facebook.

Happy Holidays!

Steven K. Gaer

WDM CITY OFFICIALS

Mayor

Steven K. Gaer

City Council

Kevin Trevillyan,
First Ward

John Mickelson,
Second Ward

Russ Trimble,
Third Ward

Rick Messerschmidt
At Large

Jim Sandager
At Large

Key City Staff

City Manager
Tom Hadden
222-3610

City Attorney
Richard J. Scieszinski
222-3523

Bicycle Commission

Kip Albertson
Margaret Christiansen
Spencer Cox
Greg France
Steve Gattton
Stacie Hatch
Amanda Krause
Brittany Martinez
Joel Wolcott

Board Of Adjustment

Michael Blaser
Eric P. Christiansen
Thomas Cunningham
Jennifer Drake
Sherry Stewart

Civil Service Commission

Lucas Casey
Chris Haviland
Lori Lavorato

Human Rights Commission

Bernell Edwards
Frank Harty
Justine Morton
Ila Plasencia
Sanjita Pradhan

Human Services Board

Vicky Arroyo
Martin Blanchard
Sue Bosworth
Tammy Cline
Chasidy Crawford
Jed Gammell
Wendy Ogden
Mark Rocha
Lisa Schneider
Robert Shoemaker
Larry Swanger
Lori Teel
Harold Templeman
Richard Turner
Chris Voggeser

Library Board Of Trustees

Eric Branstad
Louise Gately
Millie Knee
Mark Lowe
Bryan Myers
Judy Price
Kay Rosene

Park And Recreation Advisory Board

Michael Chambers
Joe Hrdlicka
Forrest Ridgway
Heather Schebel
Rick Swalwell

Plan And Zoning Commission

Erica Andersen
Michele Brown
Chris Costa
Mary Cownie
Kevin J. Crowley
Craig Erickson
Scott Hatfield

Public Art Commission

Diane Boyd
Scott Fontenot
Gary Hammers
Tamara Kenworthy
T.J. Lechtenberg
Rita Luther
Brenda Sedlacek

Sister Cities Commission

Erika Cook
Jeffrey Lipman
Matthew McKinney
John Norwood
Dorothy Pisarski
Matthew Rosen
Phyllis Staplin

Water Board Of Trustees

Scott Brennan
Philip J. Dorweiler
Brian P. Rickert
Karen Novak Swalwell
Gretchen Tegeler



The WDM magazine was produced by the City of West Des Moines, JM Impressions and Colorfx.

© 2014 City of West Des Moines, Iowa

Visit us on the web at www.wdm.iowa.gov

WINTER/SPRING 2015 • WDMMAGAZINE 5

SPONSORSHIP INDEX

PLATINUM	GOLD	SILVER	BRONZE	SPONSOR
DMACC • Page 2 www.dmacc.edu	Become A Gold Sponsor Today!	Become A Silver Sponsor Today!	Become A Bronze Sponsor Today!	HRGreen • Page 3 www.HRGreen.com

To become a sponsor, contact Wdm.Mag@gmail.com or (515) 222-3598.



Connect with Us!

Find the City of West Des Moines on Facebook, Twitter, and Pinterest and get connected with all the news, upcoming events, program registrations and more!

Go to www.wdm.iowa/socialmedia to learn more.

Upcoming Changes to Pet Licensing



The Cities of West Des Moines, Clive, and Urbandale will be streamlining their animal control and licensing partnership beginning with the 2015 licensing year. Over the previous three years, the cities have used the services of a private vendor to process animal licenses, but beginning January 1, 2015, City staff will be administering the WestPet Animal Licensing Program locally. Renewal notices and reminders to existing license holders in each city will be mailed shortly after the first of the year, while registration forms for new and unlicensed animals are

available at www.westpet.org. Residents can contact WestPet via e-mail at westpet@wdm.iowa.gov or call 273-0651 for more details.

As a reminder, all dogs and cats of at least six months of age living in these three communities must be licensed. Renewals are accepted from January 1 to April 30 without penalty – late renewals are subject to a \$25.00 late fee. License applications must be accompanied by a copy of the animal's current rabies vaccination certificate and proof of spay/neutering if applicable.

2015 License Fees:

(includes processing)

- Altered Cat \$17
- Intact Cat \$24
- Altered Dog \$19
- Intact Dog \$29
- Discounts are available for microchipped pets and service animals.



Frequently Asked Questions about Pet Licensing and the Benefits

Why do my animals have to be licensed?

The goal of the WestPet animal licensing program is two-fold. First, licensing helps prevent against rabies outbreaks by requiring a certificate of vaccination for all animals over the age of 6 months. More importantly, licensing your pet acts as a form of insurance and increases the chance that you will be reunited in the unfortunate event he/she is lost. When you license your pet, your contact information is on file with our Animal Control Officers and also with the Westcom Dispatch Center, allowing officers to contact you if your pet ends up in our hands.

What does WestPet do with animal license fee revenue?

Animal licensing revenues are allocated directly to the Animal Control Program – supplies, cleaning, shelter, and food. So by purchasing a license you are helping to ensure that all lost pets are given appropriate attention and medical care while waiting to be reunited with their owners.

What are the consequences of not licensing my animal?

A pet without identification is less likely to be reunited with its owner and may ultimately be put up for adoption or euthanized. In many cases, pets without

license or microchip are delivered to an animal shelter where they are held until the owner comes to retrieve the animal after paying a fee, whereas with a license, animal control officers routinely return an animal directly to its owner's known address, often within the hour.

My dog/cat never leaves my property, why should I buy a license?

Animals are resourceful! Although many people believe that their pet will never leave their property, dogs have a way of getting out from a "secure" yard by digging, jumping over a fence, or exiting through an open gate. Natural disasters, aberrant weather, and fireworks also often cause animals to become anxious and flee their property. A license identifies you as the pet's owner and provides animal control officers with the necessary information to reunite you with your pet.

My pet has a microchip. Do I need to buy a license too?

Yes. In addition to the fact that licensing is required by law, a microchip is invisible to the eye and can occasionally go undetected. A license is visible proof of ownership, which lets animal control officers and members of the public know that your pet is owned. It is highly recommended that all pets be microchipped AND wear a valid license.

Drought Spells Water Shortages in California

Golden State Water Problems Hit Iowans in the Pocketbook

When life gives you lemons, make lemonade.

But what if you live in California where the lemon crop is down because measurable rainfall is almost non-existent? Suddenly, making lemonade may be an increasingly tall order ... and certainly a more expensive one.

As the undisputed leader in lemon production in the United States, California finds itself in a pervasive drought with 100 percent of the state classified as being in a moderate drought or worse. More disturbing, nearly 82 percent of California's 163,696 square miles is experiencing extreme or exceptional drought. The latter is the worst of the classifications, according to the U.S. Drought Monitor, and since the beginning of 2014, exceptional drought went from 0 to more than 58 percent of California's land mass. By contrast, Iowa was 100 percent drought free by mid-September 2014.

A drought out west might not ring many alarm bells for people here in Central Iowa, where the Raccoon and Des Moines rivers are flowing strong, but perhaps it should. California contains the single largest economy in the nation by a substantial margin. If it was its own country, it would be the seventh largest economy in the world. Like it or not, in this increasingly interconnected world, California's problems quickly become problems for other states.

"It's easy to say, 'I don't live in California. Their drought isn't my problem,'" says Diana Wilson, general manager of West Des Moines Water Works. "The reality of today's

interconnectedness means that we cannot afford to be so cavalier about a drought five states away.

"Iowa farmers help feed the world, but California puts fruits and vegetables on our plates long after the farmers market season goes dormant," she notes.

Wilson understands the lack of sympathy and awareness of the western drought may stem from the fact that in 2014, Iowa experienced its fourth wettest summer on record. She quickly reminds us that it wasn't long ago—just 2012—when Central Iowa struggled with its own water shortage.

"Imagine if that drought had gone on for three years with no end in sight?" she asks. "California's water problem may not affect our taps, but it probably will affect our food bills."

For the past three years, California and other western states have seen annual rainfall amounts plummet. As a result, reservoirs are nearing historic lows and ground water sources are depleting. The water table is down 15 feet or more in California's most agricultural areas.

The dry conditions aren't exactly unprecedented, says Harry Hillaker, state climatologist for Iowa. "The late 1970s was the last time [California] encountered a similar drought, but there are some differences this time."

For example, this drought has lasted three years, the temperatures are hotter and there's about 15 million more people living in California, surging the demand for water.

Farmers, homeowners with lush green lawns and local municipalities are siphoning down the water table at a mind-boggling rate. So much so that Gov. Jerry Brown called for voluntary reductions in water use, hoping for a 20 percent cumulative decline in water usage.

The government's call for voluntary reduction fell significantly short of its goal of a 20-percent decline in water use, and now Californians face fines up to \$500 for watering lawns, landscaping and washing cars.

How do you spell relief? R-A-I-N

"We know from experience that water conservation only goes so far in drought. Precipitation is the only known cure," Wilson says.

Those in the know—the National Weather Service, the National Climate Data Center, California climatologists and the like—are talking about an El Nino this year, which may bring California some much needed rain. But even normal rain will leave California in the water deficit column.

According to its Department of Food and Agriculture, California produces almost half of all the fruits, nuts and vegetables grown in the U.S. It is the nation's leading producer of 79 staple foods including grapes, peaches, strawberries, lettuce and even beef.

So if this winter doesn't bring large quantities of rainfall to California and the other western states, the price of groceries might start to come at a higher price tag than you are accustomed. And that includes lemonade.

California's Water Shortage May Spike Desserts

- Traditionally, California's most valuable output is milk and dairy so the cost of an ice cream cone might soon be headed for an extra dip in your pocketbook.
- Strawberries are mostly grown in California, so your favorite dish involving shortcake is bound to soon see an increase.
- Pies containing cherries or apples are also in danger of cost escalation. California ranks 2nd and 4th respectively in production of those fruits.
- And if you're looking to stymie your sweet tooth, suck in your stomach and tighten your belt, you won't be paying any less either. California produces nearly 100% of the nation's almond supply, and it is the leading producer of multiple kinds of lettuce and avocados.

Winter in West Des Moines

With an estimated population of over 63,800, over 770 lane miles of streets, and the high level of expectation from the motoring public, the City takes a serious approach to the problems associated with snow and ice control.

The City's responsibility is to conduct winter maintenance activities expediently, efficiently, and safely.

Priority Snow Removal

1. All **arterial streets** - the major street network which must be kept open to provide a transportation system for police, fire, and rescue squad units.
2. All remaining **residential streets** including cul-de-sacs.
3. **Alleys** and **City parking lots**.

Snow Emergency Parking Ban

To accomplish the effective removal of snow, a Snow Emergency Parking Ban is implemented by the Public Works Department.

Vehicles must be removed from all City streets, alleys and city-owned parking areas when the Snow Emergency Parking Ban is in effect. Vehicles parked in these areas are subject to being towed and/or a \$50 ticket. The parking ban is effective from its proclamation through 5:00 p.m. the following day, unless it is extended by an additional proclamation due to the length of the storm or large volume of snowfall.

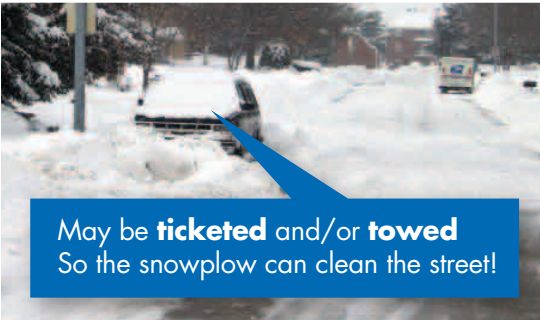
If you normally park in any of these areas, now is the perfect time to make a plan for when the Emergency Parking Ban is in place and parking is not allowed.

We don't want to tow your car when it snows! You can be proactive!

When snow is forecast, park your car off the street. If you'll be gone during the winter months, don't leave your car on the street.

My vehicle was towed during a Parking Ban. What do I do?

- Go to the Police Dept., 250 Mills Civic Pkwy. (open 24/7)
- Provide ID showing the vehicle is yours or you were the driver
- Ask for an impound release (no charge)
- Go to Roy's Towing, 155 S. 13th St., WDM
- Pay any fees due Roy's Towing (such as towing, storage) and pick up your vehicle.
- If a City ticket has been issued, that fee is due at City Hall, 4200 Mills Civic Pkwy. (open Mon-Fri 8AM-5PM)
- Be proactive in the future by keeping vehicles off the street during winter weather.

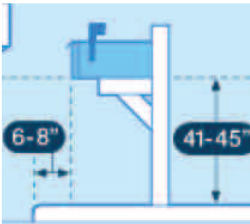


May be **ticketed** and/or **towed**
So the snowplow can clean the street!

If a prediction for snow or winter weather conditions exists, check the City's website at www.wdm.iowa.gov or call the Snow Hotline 273-0766 to see if there is a Parking Ban in place! Both are available 24/7.

Citizen Responsibilities

Snow can be beautiful, but it can also create hazards. When residents fail to clear sidewalks, falls and injuries may occur. Residents are required by ordinance to clear sidewalks (including those crossing alleys, crosswalks and driveways) within 24 hours of the end of a storm. Please place the snow on private property or adjacent to the right of way, not in the street. A helpful hint for residents - clear your sidewalk after the snowplows have completely finished plowing the street to the curb. If your sidewalk is icy, please apply sand or applicable deicer product to alleviate the hazard and reduce pedestrian injury.



Mailboxes

The City will plow the snow within the confines of curb line to curb line of a street. During extreme winter

events there may be times when City plows cannot physically place the snow onto the public right-of-way (commonly referred to as the "parking"). During these times the resident will be responsible for clearing the snow around their mailbox to assure delivery of mail. It is also the resident's responsibility for assuring that their mailbox is properly installed with the face of the door at least six (6") inches, but no more than eight (8") inches, behind the face of the curb. The post should be at least 24" away from the face of the curb, and it should be adequately constructed to withstand snow clearing efforts but meet "breakaway" criteria. In the Fall of the year, staff will conduct pre-season inspections of mailbox placement throughout the community. If a mailbox is found to be out of compliance, they will notify the resident with a door hanger so the proper corrections can be made before winter begins. Damage to mailboxes that have not been repaired or brought into compliance will not be eligible for a claim adjustment.

Frequently Asked Questions

About Snow Control

How do we know when the Snow Emergency Parking Ban is in affect?

1. **Snow Hotline** — Call **2730-SNO**. (273-0766).
2. Check the home page of the WDM website: **www.wdm.iowa.gov**
3. While on the WDM home page, sign up for **E-UPDATES** to automatically receive notices of snow emergency parking bans.



4. "Like" the City of West Des Moines on **Facebook**
5. Follow the City of West Des Moines on **Twitter**

Can't the city remove the snow they put in my driveway or sidewalks?

Unfortunately, we cannot. When you consider the vast number of driveways and sidewalks throughout the City, it would be very expensive for the taxpayers of the community to provide this type of service. The Public Works Department has over 770 miles of public streets to plow during storm events and typically does this with approximately 14 operators per shift. While we try our best to minimize the amount of snow that is placed on these areas, unfortunately it cannot be avoided.

Who do I call to get the public to shovel their sidewalks?

City ordinance requires property owners to shovel their sidewalks within 24 hours after the end of a storm. You may report unshoveled walks to Code Enforcement at 222-3304.

May I shovel/plow/blow the snow from my sidewalk or driveway into the street?

No. City ordinance prohibits this activity due to the hazardous conditions it can create in the street. Violators are subject to being fined.

I am elderly or disabled. Can the City help clean my sidewalk?

West Des Moines Human Services offers a Handyman program (one paid staff member) who can remove snow for income qualified households in the event of 2 inches of snow or more. This service is available to WDM Elderly (60+) and medically disabled households who are at or below 180% of federal poverty guidelines and prioritized according to the following criteria:

- #1 - low-income disabled households (medically verified), or
- #2 - low-income elderly;

Households must be pre-registered by Human Services with income and/or medical documentations.

Staff hours for the snow removal program are Monday-Friday 8:00 a.m. - 4:00 p.m.

While we strive to provide quality service, it is important to note we cannot guarantee your sidewalk will be cleared within the 24 hours with one employee. The Human

Services Department works with various volunteer individuals and groups in the community which assist us in snow removal when necessary. If available, staff will attempt to match them with those in need, but there is no guarantee.

For more information concerning this program please contact Tami Lage at WDM Human Services at 222-3664.

I/my group would like to volunteer to help an elderly or disabled person shovel their sidewalk. Whom should I contact?

The Human Services is always looking for volunteers to help clear snow in the winter and we appreciate the help. Please contact the Human Services Department at 222-3660.

When will my street be plowed?

The City has established priorities for the various classifications of streets. Major arterial streets that must be kept open to provide a transportation system for emergency vehicle units will be our highest priority. Depending on storm conditions, crews may have the opportunity to start plowing some residential streets before the storm ends. Ongoing weather conditions and the number of vehicles obstructing plow maneuverability in the roadways have a major impact on the effectiveness of the operation. Please keep in mind that crews may be coming down your street **more than once** to fully plow the snow to the curb. The City's goal is to have all paved streets completely plowed within 24 hours after the storm has ended.

For More Information Please Contact

The City of West Des Moines:



By phone:

Snow Hotline	2730-SNO (273-0766)
Public Works	222-3480
For Emergencies	222-3321
Human Services	222-3660
Sidewalk Violations	222-3304



Web, iPhone or Android:

To report concerns <http://yourgov.wdm-ia.com>



Facebook: "Like" the City of WDM



Twitter: Follow the City of WDM

**When removing
SNOW and ICE -
Don't put it in the street!!**

It's hazardous!

It's Illegal!

**It's costly to you when
you get fined!**

See City Code Sections 7-1-4 and 7-1-5

WDM City Code *The following is the City's regulation on snow emergency parking bans which is being published in accordance with the City Code regulation:*

6-6-7: SNOW REMOVAL:

No person shall park, abandon, or leave unattended any vehicle on any public street, alley, or city owned off street parking area during any snow emergency proclaimed by the mayor, public works director, or their respective designees. A snow emergency parking ban shall continue from its proclamation through five o'clock (5:00) P.M. the following day. The mayor, public works director, or their respective designees may extend the duration of the parking ban if conditions require additional time to clear the snow and ice. Notice of an extension shall be posted in the same manner as a proclamation of snow emergency and shall contain the date and time the parking ban shall expire. Such a parking ban shall be of uniform application. The city shall publish information regarding the responsibilities of vehicle owners under this section in the fall and/or winter editions of the "WDM Magazine" distributed to city residents, as well as post such information on the city of West Des Moines website in the fall and/or winter of each year. When predictions or occurrences indicate the need, the mayor, public works director, or their respective designees, shall proclaim the snow emergency and direct the appropriate city employee to post said proclamation on the city of West Des Moines website and forward notice of the proclamation to at least two (2) radio and two (2) television stations that broadcast their signals into the city of West Des Moines. Such emergency may be extended or shortened as the emergency warrants or when conditions warrant. This section shall not be construed as suspending parking limitations or restrictions imposed by any other section of this title. In addition to enforcement of this section by police officers, code enforcement officials and public works employees have the authority to enforce the provisions of this section. The code enforcement officials and public works employees shall have the power to issue citation-complaints for violations of this section and impound vehicles found in violation of this section as provided in subsections 6-6-15A and G of this chapter. (Ord. 1844, 10-5-2009)

West Des Moines City Code is available 24/7 on the City's website at www.wdm.iowa.gov.



Tree Maintenance

Late fall is an ideal time to perform maintenance on trees and shrubs. Homeowners are responsible for maintenance of trees and shrubs which encroach on public right-of-way, whether they are planted on private property or in the right-of-way. To prevent potentially hazardous situations, the minimum vertical clearance of trees and shrubs must be eight

feet (8') between the surface of the sidewalk or pedestrian way and the lowest branch. The minimum vertical clearance of trees and shrubs shall be fourteen feet (14') between the surface of the street and the lowest branch. If you have questions regarding pruning or maintenance of trees and shrubs, please contact your local nursery or the Urban Forestry Supervisor at 222-3417.



PUBLIC WORKS MAINTAINING THE CITY'S INFRASTRUCTURE

Closed Circuit Television (CCTV) Inspection Unit

Keeping up your home can involve many aspects of maintenance. Imagine what it must be like to maintain a CITY! Just as in maintaining a home, decisions need to be made regarding priorities, time, and monies available.

There are some maintenance issues we don't really think about in our homes....until there is a problem, such as a sewer issue. A City, however, must make every effort to stay ahead of potential problems, whether it's sewers, streets, sidewalks, vehicles, equipment, or the many other aspects of maintaining a city.

One improvement the City of West Des Moines has made in maintaining our underground sewer systems is investing in a camera van, along with a CCTV unit. Sanitary

and storm sewer pipes are buried underground and are inaccessible due to their size and location. The camera with tilt, pan, and zoom features is mounted to a robotic transporter with lights that is capable of being submerged in water/sewage and can negotiate exceptionally rugged interior conditions of pipes.

Typically preparatory cleaning is performed on the sanitary sewer main prior to the internal inspection so a more thorough inspection can be completed. Then the CCTV inspection equipment traverses down the sanitary sewer main as part of the internal inspection process. The camera is operated remotely from a specially equipped van with an environmentally controlled mobile office with all of the necessary computer equipment.



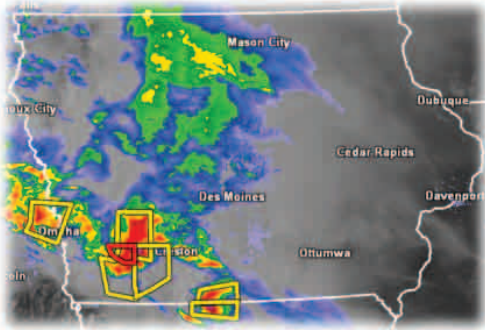
The CCTV equipment has capabilities to visually inspect pipe joint separations, pipe joint offsets, broken pipes, pipe blockages, debris in pipe, roots, sanitary sewer service taps, grease buildup, dips/sags in pipe, infiltration areas, illegal connections, liner damages, utilities bored through sanitary sewer, changes in pipe type or sizes, pipe deterioration, etc. All of this with no confined space entry required.

Issues identified by the camera inspection are recorded so that proper action may be taken to reduce the possibility of sewer pipe failure, sewer backups, and other problems affecting our City's residents and businesses.



STORM DAMAGE TO TREES

When Does The City Pick Up The Debris?



That's a good question, and one that many communities have struggled with. There is one huge factor that must be taken into account. Due to recent changes to FEMA guidelines, *free collection of vegetative debris from many types of storms could put the community at risk of **not** receiving eligible federal disaster funds for collection of debris following a declared event.*

The City of West Des Moines has approved a vegetative debris policy based on the guidelines recently adopted by the Polk County Emergency Management Commission. Many neighboring communities are in the process of approving similar policies, which will help provide consistency in our region for determinations made following a storm event.

A grid of areas that experience either Major or Destroyed category events will be developed for analysis of damage following a storm. A trained Damage Assessment Team will evaluate the storm debris and provide an assessment for all grids in West Des Moines affected by the storm.

The three categories of debris damage as determined by FEMA are:

- **Minor Damage** — No special collections will be implemented by the City. Residents will place vegetative debris at the curb using routine yard waste collection procedures (brush bundles, branches up to 10" dia., utilizing resident's MWA Compost-It bags, stickers and carts) for collection on their normal collection day. This applies only to those grids determined to have minor damage.
- **Major Damage** — Residents will place vegetative debris at the curb using routine yard waste collection procedures (brush bundles, branches up to 10" dia.) but will not be required to utilize MWA Compost-It labeled yard waste bags or stickers. This applies only to those grids determined to have major damage.
- **Destroyed** — Routine MWA curbside collection procedures (brush bundles, branches up to 10" dia.) will be utilized for smaller debris with no cost to the resident within the applicable grids determined to be destroyed. The City may make provisions for private property owners to utilize City-approved drop-off locations. This applies only to those grids determined to be destroyed.

To view the full West Des Moines' newly adopted Vegetative Debris Management Policy, visit the City website.

UPGRADING CITY FACILITIES FOR BETTER EFFICIENCY

Reducing Energy Costs And Saving Taxpayer Dollars

Back in 2009, City employees spearheaded the effort to apply for and received Energy Efficiency & Conservation Block Grant (EECBG) funding to accomplish several energy efficiency projects for the City. Half of the funding went directly to building improvements for City owned buildings and facilities.

Efforts were focused on 13 major buildings. Energy audits were performed, benchmarks were established to measure energy savings and efficiency upgrades were incorporated in any scheduled building project or equipment replacement.

One of the City's building projects that incorporated efficiency upgrades was the renovation of the Community Center, located at 217 5th Street. As part of the interior renovation for the ballroom, insulation was added to the walls, storm windows were added and new energy efficient lighting was installed. As part of the roof replacement for the same building, insulation was added and a new "cool roof" membrane was installed. New more efficient heating and cooling equipment was also installed.

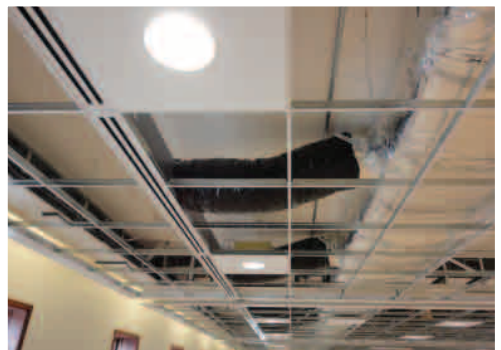
With the upgrades in place, the building's electric use has dropped over 18 percent! Not only is the building more cost effective to operate, the renovations have the added advantage of providing a more comfortable space for the building users and significantly reduce the maintenance costs for the building.



Adding wall insulation



Setting mechanical equipment



New lighting and ductwork



New storm windows

End of Yard Waste Season and Christmas Tree Collection

Get out your rakes, garden gloves, yard waste bags and recruit some help, because the end of yard waste season is almost here. November 29 is the final day for curbside collection through the Compost It! program.

And then the holiday season is right around the corner! West Des Moines provides Christmas tree collection through Metro Waste Authority's Compost It! program. Trees are removed from the curb on your regular garbage days from December 29 through January 9, and they must have a Compost It! sticker attached. Stickers are sold at participating grocery and hardware stores for \$1.20. Please remove all decorations. Wreaths, both artificial and natural, go in your normal garbage due to the metal and plastic with which they are assembled.

This is also the last chance to have any remaining yard debris collected before spring. Be sure to use your Compost It! yard waste cart, Compost It! bags, or attach Compost It! stickers to generic bags to ensure your yard waste is picked up.

For more information about yard waste collection, visit Metro Waste Authority at www.WhereItShouldGo.com or call 515.244.0021.



Holiday Recycling

The holidays bring extra cooking, shopping, gift wrapping and entertaining. The season also brings additional waste – but do you know how much? Americans throw away 25 percent more trash between Thanksgiving and New Year's than any other time of the year, and much of it can be reused or recycled. What to do with holiday items can be confusing, however.

- **Recycle** – Recycle catalogs, boxes, non-metallic greeting cards, and non-metallic wrapping paper in your Curb It! recycling cart. Paper gift bags can go in, but you must remove the handles. Plastic shopping bags should be recycled back at the store.
- **Reuse** – Reuse your ribbons, bows and garland. If every family reused just two feet of holiday ribbon, the 38,000 miles of ribbon saved could tie a bow around the entire planet! These items belong in the garbage if you do not use them again.
- **Trash** – Styrofoam, plastic packaging, aluminum foil and pans, disposable cups, plates and silverware DO belong in the garbage. Try not to purchase items that contain excess packaging or are for single use (paper plates, napkins, etc.), therefore eliminating the need to throw so much in the trash.

Other Holiday Items

There are many more holiday related things that are recyclable, but just not in your curbside recycling cart. Metro Waste Authority's recycling and disposal guide (<http://www.mwatoday.com>, then click on Recycling Guide) will direct you where to recycle items such as Christmas lights, computers, other electronics, and more!

For safe, smart disposal and recycling options, visit www.WhereItShouldGo.com or call 515.244.0021.



KEEP 'EM LOOSE

Bagged recyclables
end up at
the landfill.



Don't Bag 'Em!

Do you bag your recyclables before placing them in your curbside cart? If so, it's probably with the best of intentions, but putting recyclables in a plastic bag is actually a surefire way to get them sent to the landfill. Plastic bags, of any kind, ARE NOT recyclable in your recycling cart. The reason? Because bags get wrapped in the equipment at the recycling sorting facility, cause damage, and can even halt the processing line. When recycling facility employees spot a plastic bag — even if it's full of recyclables — it is pulled from the line and sent on to the landfill.

The Easy Solution: Keep recyclables loose in your cart.

If you are bagging your recyclables to prevent windblown litter, here are some alternatives:

- If possible, place heavier recyclables toward the top of the cart to weigh down loose papers
- Make sure your lid is completely closed
- If it's really windy, don't put your cart out the night before

For safe, smart disposal and recycling options, visit www.WhereItShouldGo.com or call 515.244.0021.



Ever Wonder What to do with Used Cooking Oil?

If you plan to fry a turkey, ham or other food item over the holidays, plan also to recycle the used cooking oil at Metro Hazardous Waste Drop-Off in Bondurant (*just a half-mile north of I-80 at the Adventureland exit*).

Accepted Oils
Canola, Corn, Vegetable & Peanut



NOT Accepted Grease

Acceptance Guidelines

You CAN recycle canola, peanut and vegetable oil year-round. Grease IS NOT accepted. The collected oil is reused to support the local biodiesel industry.

Metro Hazardous Waste Drop-Off Hours & Location

Tuesday to Friday: 1 to 5 p.m.
Saturdays: 8 a.m. to Noon
(first and third Saturdays of the month)

For safe, smart waste disposal and recycling options, visit www.WhereItShouldGo.com or call 515.244.0021.

Protecting Your Home During The Holiday Season

December marks the beginning of the holiday season, which includes Hanukkah, Christmas, Kwanzaa, and New Year's Eve. Decorating your home for holidays can be fun, but be safe. According to the NFPA, each year fires during the holiday season injure about 2,600 individuals and cause more \$930 million in damage. No matter how busy you are, take a little extra time to make sure that your holiday decorations don't become a household hazard.

Fireplaces

Have your chimney inspected and cleaned annually by a certified chimney specialist.

When building a fire, clear the area of decorations and flammable materials. Place logs at the rear of the fireplace on an adequate supporting grate. Use only seasoned hardwood. Soft, moist wood accelerates build-up in your chimney. Build small fires that burn completely and produce less smoke. Never use flammable liquids to start a fire inside your home.

Leave glass doors open while burning a fire to ensure the fire receives enough air. Close glass doors when the fire is out to keep air from the chimney opening from getting into the room. Keep the mesh metal screen closed at all times to stop embers from getting out.

Never burn cardboard boxes, wrapping paper or trash in a fireplace. It can produce dangerous sparks and a chemical build-up in the home that could cause an explosion.

Allow ashes to cool before disposing and place them in a metal container to avoid any potential fire hazards and store them at least three feet away from any combustible materials. Never leave a fire in the fireplace unattended. Extinguish the fire before going to bed or leaving the house.

Christmas Trees

If you are using a metallic or artificial tree, make sure it is flame retardant. If you are

buying a real Christmas tree, make sure it is freshly cut. The needles on the tree will be green and hard to pull back from the branches. The trunk will be sticky.

Don't put your live tree up too early or leave it up for longer than two weeks. Keep it watered at all times, and don't place it close to a heat vent, fireplace or other heat sources. The heat will dry out the tree, causing it to be more easily ignited by heat, flame or sparks.

Holiday Lights and Decorations

Maintain your holiday lights by inspecting them each year for frayed wires, bare spots, gaps in the insulation, broken or cracked sockets, and excessive wear before putting them up. Use only lighting listed by an approved testing laboratory.

Be careful not to overload electrical outlets. Do not link more than three light strands, unless the directions indicate it is safe. Connect strings of lights to an extension cord before plugging the cord into the outlet. Make sure to periodically check the wires — they should not be warm to the touch. Do not leave holiday lights on unattended.

All decorations should be non-flammable or flame-retardant and placed away from heat vents.

Candles

If you do use candles, make sure they are in stable holders, and place them where they cannot be easily knocked down. Never put lit candles on trees, and never leave the house with candles burning. Keep all candles out of reach from children and pets.

Finally, as in every season, have working smoke alarms installed on every level of your home, test them monthly and keep them clean and equipped with fresh batteries at all times. Know when and how to call for help. And remember to practice your home escape plan.

R.A.D. SYSTEMS OF SELF DEFENSE

"To develop and enhance the options of self defense, so they may become viable considerations to the woman who is attacked"



The Rape Aggression Defense Systems of Self Defense (R.A.D.)

is a program of realistic, self-defense tactics and techniques. This comprehensive course for women begins with a discussion on risk reduction strategies, date rape, use of weapons, while progressing onto the basics of hands-on defense training. The techniques taught are easy, effective, and proven self-defense/martial arts tactics. We reinforce these techniques through practice and dynamic hands-on training.

RAD is for women ages 13 and up. The class is 3 hours a night for 4 nights (12 hours of training). The cost is \$25 and comes with a lifetime return policy. RAD classes are held periodically throughout the year at the West Des Moines Police Department. Classes are taught by RAD certified instructors, Amanda St George and Billy Taylor.

For more information on RAD, contact Officer Billy Taylor at 515-222-3328 or email: William.taylor@wdm.iowa.gov



WDM RESIDENT GUIDE

All City service requests can be directed to the Online Service Desk at

www.wdm.iowa.gov

EMERGENCY 911

Non-Emergency Dispatch 222-3321

ADA Coordinator 222-3603

TDD/TTY 1-800-413-4955

Aquatic Centers 273-0700

Ambulance Billing 273-0652

Animal Control 222-3364

250 Mills Civic Parkway

Animal Licenses SEE WestPet

Better Business Bureau 243-8137

Birth Certificates SEE Vital Records

Building Safety/Inspections 222-3630

developmentsservices@wdm.iowa.gov

Business License Info. 1-800-532-1216

Cable Television

Mediacom 1-800-332-0245

Billing, Cust. Service, Connect/ Disconnect,

2205 Ingersoll Ave. Des Moines • mchsi.com

Jordan Cemetery 222-3444

Sales and Maintenance

Chamber of Commerce 225-6009

www.wdmchamber.org

City Attorney SEE Legal Department

City Clerk 222-3603

Business related licenses / voter registration

application

City Council 222-3610

City Hall Offices 222-3600

4200 Mills Civic Pkwy

City Manager 222-3610

Claim for Damages 222-3601

Code Enforcement 222-3304

police@wdm.iowa.gov

Community Center 222-3440

Community & Econ. Development 273-0770

ced@wdm.iowa.gov

County Web Site Addresses

• Dallas County www.co.dallas.ia.us

• Polk County www.co.polk.ia.us

• Madison County www.madisoncoia.us

• Warren County www.co.warren.ia.us

Death Certificates SEE Vital Records

Development Services

Building Division 222-3630

Engineering & Planning Divisions 222-3620

developmentsservices@wdm.iowa.gov

Des Moines Area Regional Transit (DART)

Public Transportation 283-8100

dart@ridedit.com

Des Moines Register

Subscriptions 1-847-424-0225

Driver's License

• Dallas County 993-6992

• Polk County 244-1052

• Madison County 462-1542

• Warren County 961-1144

Driveway Permits 222-3480

560 S. 16th St. • publicworks@wdm.iowa.gov

Economic Development 273-0770

ced@wdm.iowa.gov

Election Office

• Dallas County 993-6914

• Polk County 286-3247

• Madison County 462-3914

• Warren County 961-1020

Electrical Service See UTILITIES

Emergency Medical Services (EMS) 273-0768

EMS Billing 8055 Mills Civic Parkway

CPR and Public Access Defibrillation Classes

ems@wdm.iowa.gov

Farmers Market (VJ Foundation) 222-3642

Finance Department 222-3600

Fire Administration 222-3420

3421 Ashworth Road • fire@wdm.iowa.gov

Gas Service See UTILITIES

Hazardous Waste

Regional Collection Center 967-5512

Holiday Pool 273-0700

Housing Rehabilitation Program 273-0770

Human Resources 222-3616

Human Rights Commission 222-3675

Human Services 222-3660

318 5th St • humanservices@wdm.iowa.gov

Senior & Disabled Transportation, Energy

Assistance, Food & Clothing Pantry, Homeless

Prevention

Illegal Waste Disposal 725-0268

<http://www.iowadnr.gov>

State Dept of Natural Resources Industrial or major hazardous waste and chemical spills.

Minor/Household Spills 222-3321

Job Hotline (City of WDM) 222-3616

www.wdm.iowa.gov

Library 222-3400

4000 Mills Civic Parkway • library@wdm.iowa.gov

Legal Department 222-3523

4200 Mills Civic Parkway

Marriage Licenses SEE Vital Records

Mayor's Office..... 222-3610

Motor Vehicle License Plates/Registration

- Dallas County..... 993-5812
- Polk County..... 286-3030
- Madison County..... 462-1542
- Warren County..... 961-1111

Nature Lodge..... 222-3424
Raccoon River Park 2500 Grand Ave.

One Call Underground Utility Lines
811 OR 1-800-292-8989

Parks and Recreation..... 222-3444
parkrec@wdm.iowa.gov

Parking Violations (non-moving) 222-3600

Passports..... 1-877-487-2778

Planning & Zoning..... 222-3620
developmentservices@wdm.iowa.gov

Police Administration..... 222-3300
police@wdm.iowa.gov

Police/Fire/EMS/Dispatch (Westcom)

- Emergency..... 911
- Non-Emergency..... 222-3321
250 Mills Civic Parkway

Post Office..... 255-6471
430 5th St. WDM 50265 • usps.com

Property Tax

- Dallas County..... 993-5808
- Polk County..... 286-3060
- Madison County..... 462-1542
- Warren County..... 961-1110

Public Transportation..... See DART

Public Works..... 222-3480
publicworks@wdm.iowa.gov

Recycling – Curb IT!
Waste Management..... www.wm.com
Missed Pickup/Questions..... 265-5267

Recreation Programs..... 222-3444

Rental Housing Inspector..... 222-3630
developmentservices@wdm.iowa.gov

Senior Citizen Meals..... 274-0373

Sewer Stoppages/Repair..... 222-3480
publicworks@wdm.iowa.gov

Shelter Rentals (Parks & Rec)..... 222-3444

School Districts

- Norwalk
981-0676 • www.norwalk.k12.ia.us
- Van Meter
996-2221 • www.vmbulldogs.com
- Waukee
987-5161 • www.waukee.k12.ia.us
- West Des Moines
633-5000 • www.wdm.k12ia.us

Sidewalk Permits..... 222-3480
560 S. 16th St. • publicworks@wdm.iowa.gov

Social Security Offices..... 800-772-1213

Street Light Outages
MidAmerican Energy..... 1-888-427-5632

Street Repairs/Cleaning..... 222-3480
publicworks@wdm.iowa.gov

Taxes..... see Property Tax

Tickets Moving Violations

- Dallas County..... 993-5816
- Polk County..... 222-3772
- Madison County..... 462-1542
- Warren County..... 961-1032

Parking Violations (non-moving)

Finance..... 222-3600

Traffic Signals/Street Signs..... 222-3480
publicworks@wdm.iowa.gov

Trash Collection..... 265-7374
Waste Connections • www.wasteconnections.com

Tree Planting Permits..... 222-3417
parkrec@wdm.iowa.gov

Utilities Mid American Energy

- Gas & Electric..... 1-888-427-5632
- EMERGENCY..... 1-800-595-5325
- One Call Line Locator..... 1-800-292-8989
www.midamericanenergy.com

Valley Junction Foundation..... 222-3642

Vehicle Registration
.....see Motor Vehicle License Plates/Registration

Vital Records

- Dallas County..... 993-5804
- Polk County..... 286-3781
- Madison County..... 462-3771
- Warren County..... 961-1089

Voter Registration

- Dallas County..... 993-6914
- Polk County..... 286-3080
- Madison County..... 462-3914
- Warren County..... 961-1020

Iowa Elections Division..... 281-8849

Water Treatment Plant..... 222-3465
1505 Railroad Ave.

West Des Moines Water Works.. 222-3460
Water/Solid Waste, New Service, Service
Changes/Maintenance..... 4200 Mills Civic Pky
www.wdmww.com • waterworks@wdmww.com

Westcom

- EMERGENCY..... 911
- Dispatch Non-Emergency..... 222-3321

WestPet..... 855-434-7567
Animal Licenses

Yard Waste – Compost IT!
Waste Management..... www.wm.com
General Info/Questions..... 222-3600
Missed Pickup..... 265-5267

Persons with disabilities are encouraged to participate in City activities. Those individuals seeking City services and in need of special accommodations should either contact the department sponsoring the event or the ADA Coordinator.



WDM Public Library

Mission Statement: The WDM Public Library is a relevant and integral part of the community. The library enriches the lives of residents by providing convenient and timely access to information and ideas; by offering engaging activities and opportunities for personal and professional growth; by promoting a love of reading and learning; and by remaining responsive to the changing needs of its users.

WDM Library *Adult Programs*

REGISTRATION INFORMATION

All programs are free and require registration unless otherwise indicated. Registration dates are in brackets. You may register for most programs online at www.wdmlibrary.org.

WDM WRITER'S CLUB

2nd & 4th Sat @ 10 am

Informal meetings for accomplished or aspiring writers – share any form of writing and offer/ receive constructive criticism.

2nd Floor Library Conference Rm.
222-3413 • wdmwriters.org

CHECKMATES: CHESS AND BOARD GAME CLUB

Thu from 6:30-8 pm:

**Jan 22 [Jan 5], Feb 26 [Feb 2]
Mar 25 [Mar 2], Apr 23 [Mar 30]**

For adults and children. See p. 30 for description. Registration required.
222-3403 • wdmlibrary.org

SCRAPBOOK & CARDBAKER CLUB

**Sat, 10 am-4 pm: Jan 3, Feb 7, Mar 7
Fri, 5pm-11pm: Apr 3**

Whether you're a scrapbooker or a cardmaker, bring a project and your own supplies. (No sales at the event.) We'll provide space, snacks and cutting tools. Library Community Rm. \$1 donation requested. Registration preferred.
222-3403 • wdmlibrary.org

CLUB READ: ADULT BOOK DISCUSSIONS

Tue @ 6 pm:

- Jan 6 *Domestics Violets* by Mathew Norman
Feb 3 *The Art of Hearing Heartbeats*
by Jan-Philipp Sendker
Mar 3 *The Vanishing Act of Esme Lennox*
by Maggie O'Farrell

A few copies are available at the Information Desk or you may bring your own copy. Library 2nd Floor Classroom. Books provided by the WDM Library Friends Foundation.
222-3403 • wdmlibrary.org

CLUB READ SOCIAL

Tue @ 6:30 pm: Apr 7

Make new friends! Discover new authors! We'll share what we've all been reading lately! Newcomers welcome. Bring an appetizer or dessert to share. Library Community Rm. Registration preferred.
222-3403 • wdmlibrary.org

BEADING BASICS

Tue, Apr 21 at 6:30 pm

Learn to wire wrap as we make a simple pair of earrings. Note: Must be able to see well enough to thread a needle. Sponsored by the WDM Library Friends Foundation. 2nd Floor Classroom. Registration required.
222-3403 • wdmlibrary.org



OPEN COMPUTER LAB & GADGET ZOO

See Our Website Calendar for Dates & Times

Keeping up with the latest technology can be tough, that's why we offer free one-on-one assistance with Internet, email, attachments, and more. If you're confused by eReaders and tablets, staff can explain the options, and show you how to borrow e-materials from the library! You'll also have a chance to play with the Kindle, Nook, iPad, and other tablets. Laptop lab and devices provided by the WDM Library Friends Foundation. Registration required. 222-3403 • wdmlibrary.org

MODEL TRAINS

Sat, Jan 17,
9 am-5 pm
Sun, Jan 18,
2-4 pm

For adults and children. See p. 30 for description.



FRIENDS AUTHOR SERIES

Tue @ 6:30 pm:

Jan 27 Dave Price

Apr 28 Mary Brooks

Meet the authors and enjoy refreshments provided by the WDM Library Friends Foundation. Library Community room. No registration!

- Dave Price is the author of **Caucus Chaos** (nonfiction)
- Mary Brooks is the author of **Bampa's Bag** (children's)

HOLIDAY CARDMAKING

Fri @ 6:30 pm:

Jan 30 [11/15] Valentines

Mar 27 [1/31] Birthday

Make three holiday cards to share with family or friends. Sponsored by the WDM Library Friends Foundation. Registration required.

JERRY BARLOW: CELTIC GUITAR & STORYTELLING

Sun, Mar 8 @ 2 pm

Acclaimed Celtic fingerstyle guitarist will play traditional music from the British Isles and his own original Celtic-inspired compositions and share stories behind the music. Registration preferred.

WDM Library *Teen Programs*

REGISTRATION INFORMATION

Programs are for ages 12 & up unless otherwise indicated. All programs are free. Advance registration is required unless otherwise indicated. Sign up by phone, online, or at the Reference Desk. 222-3403 • wdmlibrary.org

NIGHTMARE BEFORE CHRISTMAS PARTY

Thu, Dec 18 | 6:30-8 pm | Library Community Room

Just in time to celebrate Halloween Christmas! Make your own characters from Halloween Town and munch creepy snacks while we watch the classic movie *The Nightmare Before Christmas*. Popcorn and drinks provided. Ages 12 & up. Registration begins Mon, Dec 1. 222-3403 • www.wdmlibrary.org



WDM Library *Teen Programs***GROUP SERVICE PROJECTS (VOLUNTEERS)****Wed: Jan 7, Feb 4, Mar 4, Apr 1****3-5 pm | Library Classroom, 2nd Floor**

Are you looking for Silver Cord, Community Service, or volunteer hours? We could use your help! The Library offers monthly group service projects for students (age 14 & up). A variety of tasks will be performed to help out the library. No experience or training necessary! Group Service Projects are on the 1st Wednesday of each month, September – May. Space is limited. Registration required. To sign up or find out more, contact Courtney.

222-3412 • courtney.bench@wdm.iowa.gov

WDM LIBRARY'S TEEN ADVISORY BOARD (TAB)**Wed: Jan 14, Feb 11, Mar 11, Apr 8****3:30-5 pm | Library Classroom, 2nd Floor**

Would you like to make the Library a better place for teens? Then TAB is for you! The WDM Library's Teen Advisory Board (TAB) is an exciting opportunity for area teens (grades 6-12) to take leadership roles in our community, have input in teen activities, help with programs and fundraising events, and help develop the library's collection of young adult materials. TAB meets the 2nd Wednesday of each month, September – May. No registration – just stop by a meeting and see what it's all about! Questions? Contact Courtney.

222-3412 • courtney.bench@wdm.iowa.gov

TEEN CRAFT NIGHTS**Thu: Jan 15, Feb 19, Mar 26****6-8 pm | Library Community Room**

Join us for an evening program full of crafting goodness! A variety of crafts will be featured with a different craft every month. Visit the events calendar on our website for more info on each program. Ages 12 & up. Sign up by phone, online or at the Reference Desk. Registration required.

222-3403 • www.wdmlibrary.org.

Jan Magazine Foot Stools/ Tables**Feb Lyrical Relief Paintings****Mar Divergent Crafts****LICENSE TO DRIVE: DRIVER'S LICENSE INFORMATION PROGRAM****Thu, Jan 29 | 6-7:30 pm | WDM City Hall Council Chambers**

Find out what teens and parents need to know about getting an Iowa driver's permit and license. This FREE program is presented by Drive Tek, the Iowa Department of Transportation, Street Survival, and the WDM Police Department. For teens and parents of soon-to-be drivers. Seating is limited.

Registration begins Mon, Dec 1.

222-3403 • www.wdmlibrary.org

ANTI-VALENTINE'S DAY**Thu, Feb 12 | 6-8 pm | Library Community Room**

Love is in the air...try to not to breathe! Join our group of sullen emo love-haters to break stuff then make stuff, decorate and eat snarky cookies, and watch the great heartbreaking movie Edward Scissorhands. Popcorn and drinks also provided. Ages 12 & up. Registration begins Mon, Feb 2.

222-3403 • www.wdmlibrary.org

**BEWARE THE IDES OF MARCH CHALLENGE****Fri, Mar 13 | 6-8 pm | Library Community Room**

Join our quest to defy superstition! We'll challenge you to "press your luck" by competing in feats that go against the rules. Would you walk under a ladder or break a mirror? Could you open an umbrella indoors? Would you even come to a program on Friday the 13th? Door prizes and snacks provided. Ages 12 & up. Registration begins Mon, Mar 2.

222-3403 • www.wdmlibrary.org

Check the Library's website for more information on upcoming teen programs.



Storytime Series



MOTHER GOOSE STORYTIME

Join us for stories, rhymes, flannelboards, gentle tunes and puppets in the storyroom. This program is designed around early literacy skills for children 6 months old through 2 years with an adult.

Registration required.

Mon @ 9:30, 10 & 10:30 am:

Jan 12, 19 & 26 [Jan 5] Feb 9 & 23 [Feb 2] <i>(library closed Feb 16)</i>	Mar 9, 16 & 23 [Mar 2] Apr 6, 13 & 20 [Mar 30]
---	---

NIGHTY-NIGHT DROP-IN STORYTIME

Join Nate for stories, rhymes, and songs (same format as Family Storytime). All ages w/adult. No registration.

Mon @ 6:45pm:

Jan 12, 19 & 26 Feb 9 & 23 <i>(library closed Feb 16)</i>	Mar 9, 16 & 23 Apr 6, 13 & 20
---	----------------------------------

LAPSIT LAMBS

Using rhymes, stories, music, and puppetry, Amy will engage baby and caregiver in language-rich activities designed for pre-walking babies (ages 1-18mo w/adult. Library Storyroom. Registration required.

Tue @ 9:30 & 10:30 am:

Jan 13, 20 & 27 [Jan 5] Feb 10, 17 & 24 [Feb 2]	Mar 10, 17 & 24 [Mar 2] Apr 7, 14 & 21 [Mar 30]
--	--

All children's programs are free and most require advance registration, which begins at 9 am on the date in brackets. 222-3405 • wdmlibrary.org

DROP-IN OLIVER'S TALES

Join Betsy and Oliver the sheep dog for stories, flannelboards, movement rhymes, and music! Storyroom. (No craft at the drop-in program.) All ages. No registration.

Wed @ 9:30 am:

Jan 14, 21 & 28 Feb 18 & 25	Mar 11, 18 & 25 Apr 8, 15 & 22
--------------------------------	-----------------------------------

OLIVER'S TALES

Join Betsy and Oliver the sheep dog for stories, flannelboards, movement rhymes, music, and a craft! Storyroom. Ages 3-6. Registration required.

Wed @ 10:30 am & 1:30 pm:

Jan 14, 21 & 28 [Jan 5] Feb 18 & 25 [Feb 2]	Mar 11, 18 & 25 [Mar 2] Apr 8, 15 & 22 [Mar 30]
--	--

FAMILY STORYTIME

Join Nate for stories, songs, flannelboards, rhymes, and a craft. Community Room. Ages 2-6 w/adult. Registration required.

Thu @ 10:30 am:

Jan 15, 22 & 29 [Jan 5] Feb 19 & 26 [Feb 2]	Mar 12, 19 & 26 [Mar 2] Apr 9, 16 & 23 [Mar 30]
--	--

DROP-IN FAMILY STORYTIME

Picture books, action rhymes, flannelboards, puppets, and songs for the whole family! Community Room. All ages. No registration.

Fri @ 10:30 am:

Jan 16, 23, & 30 Feb 20 & 27	Mar 13, 20 & 27 Apr 10, 17 & 24
---------------------------------	------------------------------------



REGISTRATION INFORMATION

Most programs require advance registration, which begins at 9am on the date in brackets. 222-3405 • wdmlibrary.org

TALES WITH TAILS

**Thu @ 4 pm: Jan 8 [Jan 5] | Feb 5 [Feb 2]
Mar 5 [Mar 2] | Apr 2 [Mar 30]**

Strengthen your reading skills with a 4-legged friend! The West Des Moines Public Library invites you to read with a certified therapy dog and practice your skills as a reader. Ages 6-12. Registration required. Please choose one 15-minute time slot for each child.

LEGO CLUB

**Wed @ 3:45pm: Jan 21 [Jan 5]
Feb 18 [Feb 2] | Mar 25 [Mar 2]
Apr 22 [Mar 30]**

What CAN'T you build with Legos?! Put your creative skills to the test. We'll have a special challenge for you, if you think you're up to it. Community Room. Ages 5-12. Registration required.

**KIDS CLUB READ**

**Thu @ 4:15 pm: Jan 22, Feb 26,
Mar 26, Apr 23 – Titles TBA**

If you like to read and talk about books, this group is for you! Join us for discussion and activities related to each month's book. Ages 8-12. Sign up in the Children's Dept.

CHECKMATES

Thu from 6:30-8 pm:

Jan 22 [Jan 5] | Feb 26 [Feb 2]

Mar 25 [Mar 2] | Apr 23 [Mar 30]

For chess enthusiasts of all ages (children/adults) and skill levels. We'll provide chess sets and feature a different board game each month. Registration required.

222-3403 * wdmlibrary.org



description

days/dates/times/locations

ages

All children's programs are free and require registration unless otherwise indicated! You may register online at www.wdmlibrary.org, in person, or call us at **222-3405**.

BEGINNINGS MUSIC

Join the Iowa Youth Chorus' Beginnings program for singing, movement and instrument exploration and learn how music benefits young children.

Thu, Jan 8 at 10am
Fri, Jan 9 at 10am
Fri, Jan 9 at 10:45am
registration required [Jan 5]

birth – 18mo
18mo – 3yrs
3 – 6



description	days/dates/times/locations	ages
-------------	----------------------------	------

All children's programs are free and require registration unless otherwise indicated!
You may register online at www.wdmlibrary.org, in person, or call us at **222-3405**.

VALENTINE CARD WORKSHOP

Celebrate the season by making some LOVE-ly valentines for your friends and family! EARLY REGISTRATION!

Wed, Feb 11 at 3:45pm
Library Community Room
registration required [Jan 5]

4-12 w/adult

VALENTINE PARTY

You'll LOVE the HEART-y stories, songs, flannelboards, and craft we'll share in honor of Valentine's Day.

Feb 11 & 12 at 10:30am [Feb 2]

2-6

DROP-IN VALENTINE PARTY

Same as above without the craft.

Wed, Feb 13 at 10:30am
No registration

all ages

BARNES & NOBLE VALENTINE CELEBRATION

Valentine's Puppet Show & Stories

Sat, Feb 14, 10:30, 11 & 11:30 am

Join us for an entertaining puppet show and story presented by the library's Teen Advisory Board. Be sure to pick up a special take-home craft to continue the fun later.

Support the WDM Library

Sat, Feb 14, 9 am – 10 pm

A percentage of all in-store purchases (University Ave) will be given back to the library! Just mention the WDM Public Library when you check out.

Support the WDM Library

Feb 10-14

Online purchases can be made 24/7. Pick up a flyer at the library or visit our events calendar online for more information.

www.wdmlibrary.org • www.bn.com/bookfairs

4550 University Ave, WDM



WDM Library *Children's Programs*

description	days/dates/times/locations	ages
<p>All children's programs are free and require registration unless otherwise indicated! You may register online at www.wdmlibrary.org, in person, or call us at 222-3405.S</p>		
<p>MODEL TRAINS! All aboard! Stop by the library to see the Central Iowa Railroad Club's working layout.</p>	<p>Sat, Jan 17, 9am-5pm Sun, Jan 18, 2-4pm Library Community Rm No registration</p>	<p>adults & children of all ages</p>
<p>MAY BASKETS Join us for a spring story and make May baskets to share with your friends. Please choose one session to attend.</p>	<p>Apr 29 & 30 at 10am Library Community Rm registration required [Mar 30]</p>	<p>2-6 w/adult</p>

For more information pick up a calendar in the Kids' Department.

If You Enjoy Our Kids' Programs,
 Please Join The Friends!



- During the 2013-14 Fiscal Year, the library offered 544 children's programs with 36,500 people attending. Friends memberships pay for many of the special children's programs throughout the year.
- Memberships provide incentives to more than 2500 children participating in the Summer Reading Club, which encourages young readers to keep learning when they are not in school.
- Your donation is tax deductible!

WDM Library Friends Foundation
4000 Mills Civic Pkwy, WDM, IA 50265 | 222-3407 | wdmlibrary.org



WDM Library services

GET A LIBRARY CARD... IT'S FREE!

Present a valid ID with proof of current address. Residents of WDM, DSM, Ankeny, Clive, Urbandale, and Windsor Heights may apply. Cards are valid for three years (no renewal fee).

LIBRARY HOURS

(Labor – Memorial Day)

Mon-Thu: 9 am-9pm | Fri: 9 am-6 pm

Sat: 9 am-5 pm* | Sun: 2 pm-5 pm*

*SUMMER HOURS

Sat: 10 am-4 pm | Sun: Closed

Call or check our website for holiday hours.

222-3400 | wdmlibrary.org

ONLINE CATALOG... wdmlibrary.org

Access the library catalog 24/7 from the comfort of your home...just follow the link on our website. Reserve items that are checked out, or on the shelf!

RENEWALS/ ACCOUNT ACCESS BY PHONE

Use your library card number to access a list of titles checked out, including due dates; overdue items; titles on reserve with your position on the waiting list; and charges on your account. You may renew all of your items at once, or renew individual titles if you have the barcodes.

225-1576 or 225-1586
wdmlibrary.org



*All services are **free**
unless otherwise indicated.*

Questions? Call 222.3400

WE TAKE RESERVATIONS

If the item you want is checked out, use your library card to place a reserve or "hold" on it. Want to read a bestseller? We buy one copy for every six reserves. Holds can be placed by phone or online, and we'll call you when your item comes in. If we don't own the book you need, we can usually buy it, or borrow it from another library within a couple of weeks.

222-3400 | wdmlibrary.org

BOOK CLUB COLLECTION

The library has multiple copies of past Club Read titles available for local book clubs to borrow. Specific titles are listed on our website. Advance reservations required.

222-3413 [adult titles] • 222-3575 [children's titles] | wdmlibrary.org

MORE THAN BOOKS

Your library is more than a warehouse for books. You'll find popular magazines and newspapers; large print materials; puppets and puzzles; recorded books; new releases, classics, and nonfiction DVD's; music CD's; and more. E-books are offered through the WILBOR library consortium. This works similarly to our OverDrive

downloadable audiobooks collection. A WDM library card and a small software install are required. For details, look for the eBooks news item on our website and click on the WILBOR link. **222-3403** | wdmlibrary.org





WDM Library *services*

TECHNOLOGY & EQUIPMENT

Available for use in the library: photocopier, fax, interactive storybooks, word processing, free Internet access, wireless access, and a 20/20+TV enlarger for the visually impaired. Available for checkout: overhead projector, iPads. Hate long lines? Try the 3M SelfCheck System!

222-3400 • wdmlibrary.org

ASK A LIBRARIAN

Got a question? We can help! Try our electronic resources...EBSCO Host magazine index, Novelist, ProQuest, and more! Business/investment info includes S&P's and The Street publications, Value Line, Investor's Business Daily, and Morningstar Mutual Funds Reports. **222-3403**

LIBRARY BLOGS

From our Internet home page, click on KIDS, TEENS, or ADULTS (orange box, left side). BLOG is one of the choices you'll find in the green box (upper left). Discover great information on our programs, plus book lists, staff recommendations, reading and literacy tips, and more.

222-3405 • wdmlibrary.org

PUBLIC MEETING ROOMS

Available for public use at no charge: small rooms (8 people), Classroom (20), Community Room (60). Call for guidelines and scheduling information. • **222-3400**

TEEN AREA

YA materials are located upstairs, along with comfy couches and study tables. Get book lists and recommendations. For info on programs and activities, drop in or check our website.

222-3412 • wdmlibrary.org

WE MAKE HOUSECALLS!

If you are a WDM resident, unable to come to the library for health reasons and interested in receiving regular monthly visits from a volunteer, give us a call.

222-3400

Check out our new website, with more integrated features and fresh content.



WDM LIBRARY FRIENDS FOUNDATION MAKES A DIFFERENCE

Our community library is fortunate to have the support of the WDM Library Friends Foundation – a volunteer-based, non-profit organization.

- Friends Memberships fund special projects, like the Laptop Lab, and programs for all ages. Contributions mean more books, music, and movies in the collection, so YOU have a better selection.
- Your donations are tax deductible!

WDM Library Friends Foundation

4000 Mills Civic Pkwy, WDM, IA 50265

- 222-3407 • wdmlibrary.org

BE A VOLUNTEER

Make a difference! We need reliable volunteers, especially in our homebound delivery program (1-2 deliveries per month). Fill out an application at the Info Desk.

222-3400 • wdmlibrary.org

BOOK SALE AREA

Don't miss the Friends book sale area (just around the corner from the Info Desk) to find great bargains from 10¢ magazines to \$1 hardbacks – adult and children's titles. Proceeds benefit library programs and collections. • **222-3400**

SOCIAL NETWORKS

Links to our Twitter, Facebook, and Pinterest pages are located on our website home page (upper right corner). "Follow" us on Twitter @ WDMLibrary, WDMLibraryChild or WDMLibraryTeen to receive "tweets" (updates) on library news, programs, and events. "Like" or "Follow" us on Facebook. Visit our

Pinterest page to see Activities for Kids, Book Club Picks, Books & Reading (quotes), Staff Picks, and more! Instructions on how to set up accounts are available at the Reference Desk.

222-3403 • wdmlibrary.org



MOBILE APP PUTS THE LIBRARY AT YOUR FINGERTIPS!

With our new library app, you can instantly tap into library resources from any mobile phone connected to the internet.

Browse the library catalog, hold or renew a book, check your account, ask a question, find events, and more. Search for "West Des Moines Library" on your phone app store and download. It's free!

222-3403 • wdmlibrary.org



See Library Activities pages for adult & children's programs at the WDM Library.

WDM Human Services

“The ♥ of the Community”

WDM Human Services has been helping community members since 1979. As a department within the City of West Des Moines, WDM Human Services is a non-profit agency that provides necessary assistance to low-income, elderly and disabled individuals in our service area. Basic needs such as food, clothing, shelter, transportation and emergency assistance are a few of the critical services provided by WDM Human Services. For more than three decades, we have provided support and assistance to community members during emergency and crisis situations to ensure their safety and well being and to improve or enhance their quality of life. WDM Human Services partners with members of the community to provide support and assistance. If you would like to help us meet our community need, please call 273-0633.

**WE HAVE
MOVED!**

Our new address is:

**139 6th Street
West Des Moines, IA
50265**

TRANSPORTATION

description	contact/ location	dates days/times	eligibility/ qualifications	fee
<p>WESTSIDE COMMUNITY CENTER</p> <p>Transportation is available for senior residents of West Des Moines, Clive (Polk County), Windsor Heights and Des Moines (Frisbee area). Along with a nutritious lunch, enjoy several fun daily activities.</p>	<p>Trans. Supervisor 222-3661</p> <p>217 5th St. WDM Community Center</p>	<p>M – F 8am – 4pm Lunch served at 11:30 am</p>	<ul style="list-style-type: none"> • Senior residents (60+) • Reservations required at least 24 hours in advance 	<p>donations encouraged</p>
<p>APPOINTMENTS</p> <p>Transportation is available for necessary medical appointments, recreational group trips and Human Services referral trips.</p>	<p>Trans. Supervisor 222-3661</p>	<p>M – F 8am – 4pm</p>	<ul style="list-style-type: none"> • Seniors (60+), disabled and low-income residents of WDM • Reservations must be made at least 24 hours in advance. 	<p>donations encouraged</p>



WDM Human Services *programs*

Human Services Mission:

“To provide opportunities for citizens to improve and enhance their quality of life and sense of community through the programs and services available.”



TRANSPORTATION

description	contact/ location	dates days/times	eligibility/ qualifications	fee
<p>SENIOR DINNER CLUB</p> <p>Seniors (60+) have the opportunity to enjoy one another’s company while they dine at one of our finest area restaurants.</p>	<p>Trans. Supervisor 222-3661</p>	<p>First Tuesday of each month</p>	<ul style="list-style-type: none"> • WDM senior residents. • Reservations must be made at least 24 hours in advance. 	<p>Cost of your dinner</p> <hr/> <p>Transportation FREE (donations encouraged)</p>



CITIZENS WITH SPECIAL NEEDS

FRIENDSHIP CONNECTION

Friendship Connection is a club for young adults with special needs.

WDM Human Services
222-3660

Thursdays
10am – 11:30am

- Young adults with special needs

NONE

Friendship Connection is offered every Thursday from 10:00 am to 11:30 am through WDM Human Services. Participants socialize, play games, sing, enjoy refreshments and have fun! Organizations throughout the community also make special presentations on occasion. Volunteers are needed to assist with this program. To learn more, or to register as a participant, volunteer or presenter, please call 222-3660 or visit our website www.wdmhumanservices.com.



FOOD

description	contact/ location	dates days/times	eligibility/ qualifications	fee
<p>DES MOINES AREA RELIGIOUS COUNCIL FOOD PANTRY</p> <p>Emergency food and personal care items are available at WDM Human Services for households in need.</p>	<p>Program Outreach Assistants 222-3660</p>	<p>M 8:30am - 3pm T 8:30am - 3pm W 8:30am - noon TH 8:30am - 3pm F 8:30am - noon</p>	<ul style="list-style-type: none"> • Emergency Assistance only. • Must provide ID for all household members and proof of address • Must be WDM or Clive resident. 	<p>NONE</p> <p><i>Funding for this program is provided by USDA which is an equal opportunity employer.</i></p>
<p>HOLIDAY ASSISTANCE</p> <p>Need help with the holidays? Programs are available for qualifying households.</p>	<p>Program Outreach Assistants 222-3660</p>	<ul style="list-style-type: none"> • Deadlines apply – call 222-3660 or visit our website 	<ul style="list-style-type: none"> • Must meet income criteria of Federal Poverty Guidelines. • Must be in our service area. 	<p>NONE</p>
<p>BREAD DISTRIBUTION</p> <p>Donated bakery items are available weekdays for households in need.</p>	<p>Human Services Staff 222-3660</p>	<p>M – F 9am</p>	<p>NONE</p>	<p>NONE</p>



WDM Human Services Current Needs

Personal Pantry:

Each month WDM Human Services assists approximately 300 low-income households with personal care products. We need your help to meet the needs in our community. Following is a list of items we need on an on-going basis:

- Laundry detergent
- Shampoo
- Conditioner
- Deodorant
- Toilet Paper
- Toothpaste
- Diapers (Sizes 3-6)
- Soap

Clothing Closet:

Our clothing closet is in need of new or gently used children's, teen, and adult clothing items for the cooler seasons. We also need towels, sheets, blankets and small household items. Clothing Closet donations are accepted Monday through Friday 8am – 4pm at 139 6th Street in West Des Moines. Donation receipts are available.

Partner with WDM Human Services to help our neighbors in need!



HOUSEHOLD ASSISTANCE

description	contact/ location	dates days/times	eligibility/ qualifications	fee
<p>ENERGY ASSISTANCE (LIHEAP) The Low Income Home Energy Assistance Program (LIHEAP) helps qualifying households with their primary heating costs during the winter.</p> <div style="border: 1px solid blue; border-radius: 15px; padding: 10px; margin-top: 10px;"> <p>Dallas County Residents receive assistance at the Dallas County Family Development Center, 2814 1st St., Perry, IA 50220 465-5185</p> </div>	<p>Program Outreach Assistants 222-3660</p> <p>Call for an appointment.</p>	<p>M 8am – 3pm T 8am – 3pm W 8am – noon TH 8am – 3pm</p> <p>Sign-up by April 30, 2015</p>	<ul style="list-style-type: none"> • Low-income households in Western Polk County • Social security card & date of birth for all household members • Copy of your most recent heating/ electric bill • 13 weeks of verifiable income from all sources for all household members 	NONE
<p>EMERGENCY ASSISTANCE/ HOMELESS PREVENTION Emergency Assistance is available to avoid housing evictions and utility disconnects to eligible households.</p>	<p>Program Outreach Assistants 222-3660</p>	<p>M 8am – 3pm T 8am – 3pm W 8am – noon TH 8am – 3pm</p>	<ul style="list-style-type: none"> • Low income WDM residents. • Residents must show eviction or disconnect notice to qualify. • See above energy requirements. 	NONE
<p>ASSISTANCE WITH GOVERNMENT FORMS Government forms are not always easy to fill out. WDM Human Services is here to help.</p>	<p>Program Outreach Assistants 222-3660</p>	<p>M 8am – 3pm T 8am – 3pm W 8am – noon TH 8am – 3pm</p>	<p>Service area residents.</p>	NONE

Assistance is available for the following forms: Iowa Rent Reimbursement, Property Tax Credit, Special Assessment, Iowa Mobile/Manufactured/ Modular Home Owner Application for Reduced Tax Rate and hawk.i insurance. Bring household income and address verification.



WDM Human Services *programs*

YOUTH ASSISTANCE

description	contact/ location	dates days/times	eligibility/ qualifications	fee
<p>YOUTH RECREATION ASSISTANCE</p> <p>Limited scholarships for recreational/educational activities, are available to eligible households.</p>	<p>Program Outreach Assistants 222-3660</p>	<p>M 8am – 3pm T 8am – 3pm W 8am – noon TH 8am – 3pm</p>	<ul style="list-style-type: none"> • Proof of income • Proof of address • Documented proof of activity costs • Low income • WDM resident 	<p>Varies depending on household income</p>

HOUSING

HOUSING SOLUTIONS

An intensive housing and supportive services program that works with homeless families to identify and work to overcome barriers preventing them from providing stable or permanent housing for their families.

Housing Solutions Coordinator
222-3666

M – F
8am – 4pm

Limited availability.



Eligible homeless participants will need to meet HUD homeless guidelines and income criteria.

DONATE TODAY!

Go to www.wdmhumanservices.com and click on “**Donate Now**” to make a secure, tax-deductible contribution. It has never been easier to help a neighbor in need!

CURRENT NEEDS LIST

- **Personal care items**
- **Diapers & wipes**
- **Fall/winter clothing (for all ages)**
- **Non-perishable food items**
- **Gift cards for gas, groceries & clothing**
- **Towels, sheets & blankets**

Donations may be dropped off Monday through Friday between 8am & 4pm at **139 6th Street** in WDM.



CLOTHING CLOSET

description	contact/ location	dates days/times	eligibility/ qualifications	fee
Gently used clothing articles are available to those in need. Small household items are also available on a limited basis.	Program Outreach Assistants 222-3660	M 8:30am - 3pm T 8:30am - 3pm W 8:30am - noon TH 8:30am - 3pm F 8:30am - noon	<ul style="list-style-type: none"> • Proof of income • Proof of address • Service area resident • ID required 	NONE (donations encouraged)

This is a community supported program — donations of clothing and small household items are always needed.

LIFE SKILLS

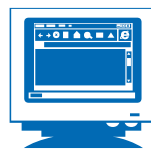
COMPUTER CLASSES

are available on a limited basis to teach or enhance computer skills on a variety of levels.

Human Services Staff
222-3660

Mondays & Wednesdays
3:30pm – 4:30pm

NONE



NONE (donations encouraged)

ELDERLY ASSISTANCE

HANDYMAN/ CHORE

Services include lawn mowing, snow removal and minor home repairs for low-income elderly and disabled residents of WDM.

Program Outreach Assistants
222-3660

M – F
8am – 4pm

- Income - eligible Seniors (age 60+) or income-eligible disabled residents of WDM.

- Registration required for new clients.

NONE (donations encouraged)



VOLUNTEER TODAY!

West Des Moines Human Services extends a heartfelt **THANKS** to all of the wonderful volunteers who donate their time and talents to help us continue to be the heart of the community. Volunteers are currently needed in the food pantry, clothing closet and for our Friendship Connection Program. If you have a passion for helping those in need, please contact **Melinda Hotovec** at **222-3663** or visit **www.wdm.iowa.gov**.



WDM Human Services "The ♥ of the Community"

Holiday Giving Opportunities...

Help Your Neighbors In Need

The holidays are approaching and you are invited to add one or more families to your holiday list by participating in one of West Des Moines Human Services' holiday assistance programs.

West Des Moines Human Services is a non-profit organization that provides assistance to low-income, elderly and disabled individuals in our service area. Many of our community members are surviving on very limited incomes and struggle to afford even the most basic of necessities. The holiday season can be particularly difficult for these individuals and families.

Please consider partnering with us to assist these struggling members of our community. Gifts can be delivered directly to a family, or you may deliver your gifts to West Des Moines Human Services and we will deliver to the family. Following are the opportunities available:

Thanksgiving

Sponsors are needed to provide grocery gift cards or food baskets.

Adopt-A-Family Program

Sponsors are matched with a family in need and asked to provide gifts for the children in the household. A "wish list" from the family will be provided. Sponsors may deliver the gifts directly to their "adopted" family.

Toyland

This program provides toys for children who are not sponsored through the Adopt-A-Family program.

This year, Toyland will take place on December 16, 17 and 18 at WDM Human Services. Donations of new, unwrapped toys are needed for this event.

Monetary Gifts and Gift Cards

Monetary donations and gift cards are also appreciated. Please designate holiday assistance.

If you know of other individuals or organizations who may wish to participate, please forward this information along. We have many families and children who need assistance and adopting a family is a wonderful tradition during the holidays. Please contact Mindy Hotovec at 222-3663 with any questions.

If you are interested in providing assistance, please complete the **Holiday Sponsor Form** and send to:

Mindy Hotovec
West Des Moines Human Services
139 6th Street, P.O. Box 65320
West Des Moines, Iowa 50265
Melinda.Hotovec@wdm.iowa.gov
515-222-3663



HOLIDAY SPONSOR FORM

Contact Name _____

Company Name (if applicable) _____

Street Address _____

City, State, Zip _____

Telephone Number _____

E-mail Address _____

We will deliver directly to the family.
(Note, food baskets must be delivered to the family)

We will deliver to WDM Human Services.

Do you speak Spanish
or have access to
an interpreter? Yes No

Have you been a
sponsor in the past? Yes No

I/We would like to participate in the following programs offered by WDM Human Services:

Please check the program(s) and fill in the requested information.

Food Card and/or Food Basket: For which holiday(s)? _____

Option 1: Purchase a **food card** from a local grocery provider for the holidays.
(\$25 increment(s)
I/We will provide a food card(s) for _____ family(s). Maximum size of family(s): _____

Option 2: Provide a **food basket** for the holidays.
(Food baskets must be delivered directly to the family)
I/We will provide a food basket for _____ family(s). Maximum size of family(s): _____

Adopt-A-Family Holiday Program:

Minimum Requirements: Sponsors are asked to **provide gifts for the children living in the household** consisting of at least two to three gifts per child. Of course, you may provide more if you desire.
(Optional: Sponsors may also provide a food basket for the family consisting of the groceries needed for a holiday meal or a food card from a local grocery provider.)

I/We want to adopt _____ family(s). Maximum size of family(s): _____

Special Preferences: (ie, specific ages) _____

Toyland

(Please deliver unwrapped toys to WDM Human Services by December 12th, 2014.)

I will provide approximately _____ toys.

Monetary Contribution or Gift Cards

Please designate holiday assistance or your contribution may be used to assist families with the greatest need throughout the year.

Please make your check payable to: West Des Moines Human Services

Sponsor forms or donations should be sent to:

WDM Human Services • Attention: Mindy Hotovec

139 6th Street, P.O. Box 65320, West Des Moines, IA 50265

Melinda.Hotovec@wdm.iowa.gov • 222-3663



Sunday Supper In Our Town

RAISES OVER \$30,000

To help low-income, elderly and disabled residents

West Des Moines Human Services held its 5th annual "Sunday Supper In Our Town" fundraising event at Flemings Prime Steakhouse & Wine Bar on September 28th, 2014. More than 125 guests attended the dinner benefiting low-income, elderly and disabled residents in the western suburbs. Proceeds benefit the programs of West Des Moines Human Services. The event was hosted by WDM Mayor Steve Gaer and wife Sally, City Manager Tom Hadden and wife Tina, Council member Russ Trimble and wife Alana, Human Services advisory Chair Tammy Cline and husband Vince, and Human Services Board Member Wendy Ogden and husband Dennis. It was a wonderful evening of giving back to the community.

THANK YOU TO OUR SPONSORS...

\$2,500 Giving Level

Ahlers & Cooney, P.C.
Athene

\$1,500 Giving Level

R & R Realty Group
Foundation

\$1,250+ Giving Level

Steve & Sally Gaer
Russ & Alana Trimble

\$1,000 Giving Level

LaMarca & Landry, P.C.
Frank Berlin & Associates
Great Western Bank
West Bank
Shive-Hattery Inc.
Mowry Strategies/Tina Hadden
McGladrey LLP

3E Electrical Engineering
& Equipment Co.

West Des Moines Community
Enrichment Foundation

UnityPoint Health

Foth Infrastructure
& Environment, LLC

\$500 Giving Level

Bankers Trust
Career Search Associates

Valley Eye Clinic

Foster Group Inc.

HDR

Vista Real Estate

McClure Engineering Co

Wright Tree Service

Lincoln Savings Bank

Jamie Ward

Special thanks to JM Impressions



FROM The City Manager

Greetings and Happy Holidays! For public servants in Iowa, the coming of the holidays means it's time to work on budgets and the Capital Improvement Plan for the next fiscal year. It's the time of year for spreadsheets, work sessions and meetings to determine project priorities and the best place to invest our resources for 2015-2016. Additionally, the 2015-2016 fiscal year will include two very important opportunities for citizen engagement and participation: the Citizen Survey and the Special Census.

As I have shared before, I believe citizen input and engagement is an important part of thoughtful long-term planning. The bi-annual Citizen's Survey will be developed and disseminated the beginning of 2015 to several households throughout the City requesting feedback on the delivery of city services and other key areas. The survey represents an opportunity to give the City a "report card" and share valuable insights with the Mayor, Council, and City Staff to that we may continue successful initiatives and improve others. I urge all that receive the survey to consider taking the time to share your experience and insights; we will appreciate it!

Another survey to which you may be asked to respond will be the Special Census. The City, along with many other cities in the Des Moines area, will conduct a special census to capture the growth that has occurred since the 2010 census. Although development in the City slowed for a short time, there has been a vigorous recovery with record breaking building permit values in 2012 and 2013. We believe these values will be better

represented during the 2015 Special Census and the City will benefit from the additional road use tax funding from the State.

Budget and Capital Improvement Plan work sessions are public meetings and agendas will be posted ahead of time and held in City buildings for easy access. However, because extra meetings throughout the week can be difficult to attend, meeting summaries will be posted on both the City of West Des Moines' website (www.wdm.iowa.gov) and the City's Facebook accounts to shed light on the deliberations and discussions during these times. At any time during the process, residents with ideas or recommendations are welcome to attend a meeting or reach out to the City via email or a simple phone call to the City Manager's Office, 222-3610. We want all the input we can get to make our long term planning efforts thoughtful, inclusive and successful.

The last seven months serving as City Manager have flown by, but they have been filled with meaningful introductions and exciting projects. I am looking forward to the New Year and all the opportunities to come for this great City. Here's wishing you and your family a happy and safe holiday season; Cheers to 2015!

Best,

Tom Hadden

WDM Parks & Recreation

PROGRAM GUIDE

**Registration
Starts:
November 10**



CONTENTS

Adult Fitness	p28	Senior Lunch & Learn	p40
Adult Painting Class	p29	Special Events	p6-8
Adult Sports	p30-34	Start Smart Programs	p12
American Red Cross Programs...	p22-24	Story Time / Story Hour.....	p10
Archery Day Camp.....	p14	Teen Center	p20-21
Ballroom Dancing	p26-27	Travel Program.....	p35
Birthdays	p18-19	WDM Parks & Recreation Facilities..	p2
First Steps Dance Classes	p11	WDM Parks Directory.....	p3
Hunter Education	p14	WDM Parks & Recreation Map	p4
Magicamp	p14	WDM Facility Rentals.....	p3
Martial Arts.....	p13	Water Aerobics	p25
Open Swim.....	p25	Water Safety & Lifeguard Training.....	p24
Preschool Programs.....	p9	Whippoorwill	p16-17
Registration.....	p38-39	Youth Painting Class.....	p16
Senior Crafts.....	p37	Youth Sports	p15
Senior Day Trips.....	p36		

West Des Moines Parks and Recreation Department Facilities

Administrative Office at WDM City Hall

4200 Mills Civic Parkway

222-3444

Raccoon River Park Nature Lodge

2500 Grand Avenue

222-3424

Raccoon River Park Archery Facility

2500 Grand Avenue

222-3424

Raccoon River Park Softball Complex

500 Grand Avenue

222-3505

West Des Moines Community Center

217 5th Street

222-3440

Holiday Aquatic Center

1701 Railroad Avenue

273-0700

Valley View Aquatic Center

255 S. 81st Street

273-0700

West Des Moines Teen Center

1401 Vine Street

202-5169

Jordan Cemetery

2950 Fuller Rd.

222-3444

Weather Cancellation Hotline

222-3500



Raccoon River Park Archery Facility

The archery facility is the first of its kind in Iowa and includes features such as:

- Enclosure walls/fencing
- Overhead 'arrow curtains'
- Shelter over shooting area
- Staging area
- 12 shooting lanes
- Targets up to 40 yards distance

Jordan Cemetery

A resting place for many of the founding families of West Des Moines, Jordan Cemetery is located at 2700 Fuller Road. Jordan Cemetery dates back to 1846 when James Jordan arrived in Polk County and homesteaded in the area. The cemetery is now operated by the Parks and Recreation Department, and continues to provide cemetery lots for sale. If you would like information please contact the Parks and Recreation Office at 222-3444.



West Des Moines Parks

American Legion Park...301 Vine St.
Ashawa Park.....4431 Waterford Dr.
Brookview Park.....400 81st St.
Crossroads Park.....5205 Ashworth Rd.
Fairmeadows Park.....543 22nd St.
Florer Park.....1410 Locust St.
Holiday Park.....1701 Railroad Ave.
Huston Ridge Park8455 Coachlight Dr.
Jaycee Park.....5608 Center St.
Jordan Creek Park.....310 50th St.
Kiwanis Park.....3101 Maple St.
Knolls Park.....5150 Aspen Dr.
Maple Grove Park.....9350 Chalk St.

Meadowview Park638 Prairie View Dr.
Pearson Park1256 19th St.
Peony Park.....1100 63rd St.
Quail Cove Park1515 South 52nd St.
Raccoon River Park.....2500 Grand Ave.
Railroad Park425 Railroad Ave.
Scenic Valley Park.....1223 South 24th Ct.
Southwoods Park.....350 South 35th St.
Valley View Park.....255 81st St.
Western Hills Park4115 Walnut St.
Wild Rose Park.....6801 Cody Dr.
Willow Springs Park.....5685 Wistful Vista Dr.
Wilson Park.....298 9th St.

West Des Moines Community Center Rentals

Located in the heart of Valley Junction, the West Des Moines Community Center offers a variety of meeting and social function spaces that can meet your needs. On the first level there are several flexible rooms that can accommodate groups from 20 to 100 people depending on your set up requirements.

The Grand Ballroom is located on the second level of the building which offers space for seated functions for groups as large as 200 people. The Ballroom has recently been updated with a new maple wood floor, ceiling and lighting updates, fresh coat of paint, and new windows. It is a great space for large family or business dinner affairs as well as wedding receptions.

Give us a call at 222-3440 to check rates and availability today!



Nature Lodge Rentals

Looking for a room with a view to hold that family function or business meeting? Then the Raccoon River Park Nature Lodge is just the place for you! The Lakeview Room provides a panoramic view of Blue Heron Lake in Raccoon River Park. This unique setting provides a quality experience for your guests to enjoy and offers a variety of spaces and services to make planning your event and easy as one...two...three!

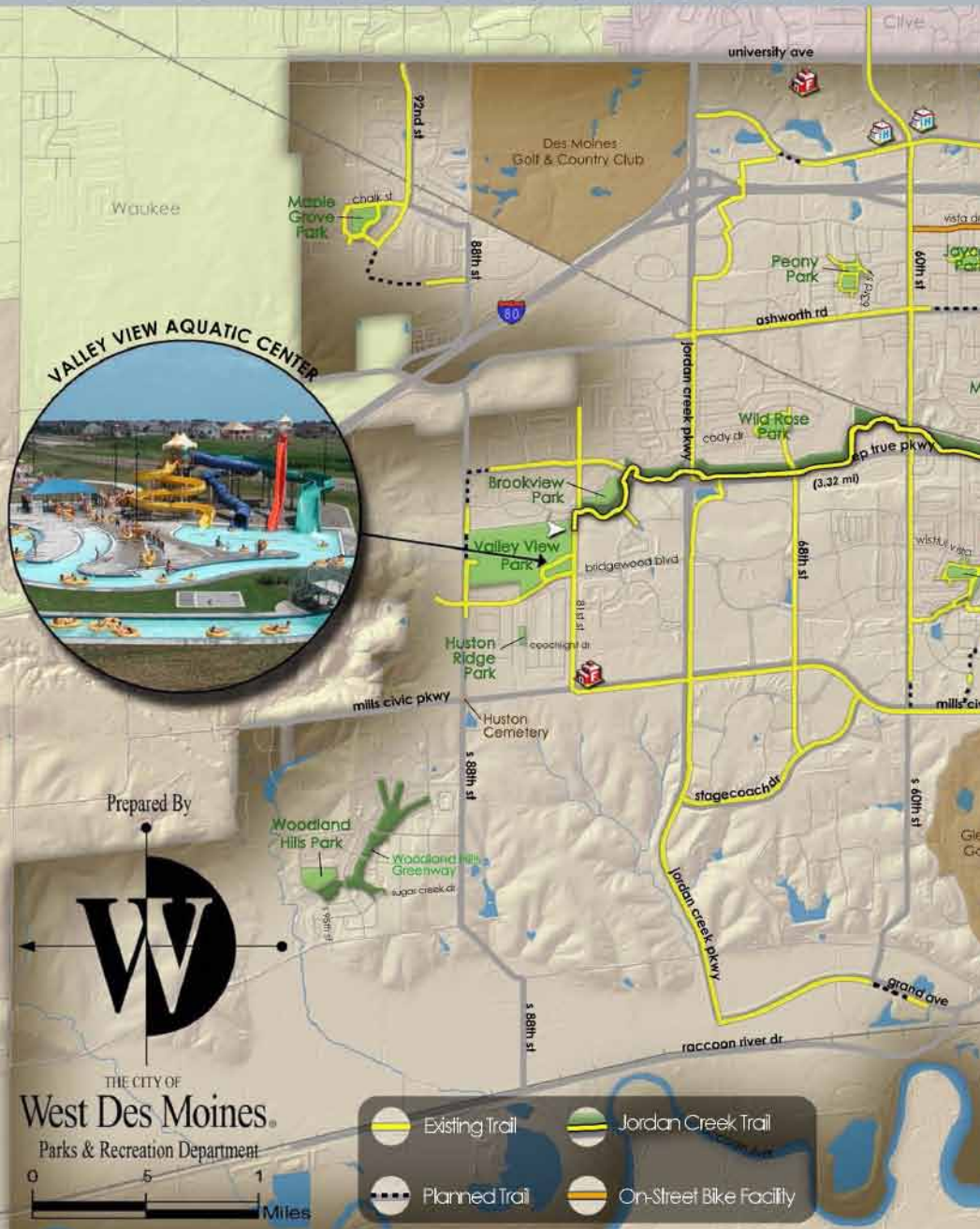
The Lakeview Room accommodates groups as small as 20 people up to sit down functions for 110 people. Our great rental rates make things affordable and works with your budget. We have preferred caterers if you choose to use them, or feel free to make your own arrangements with your caterer. Only beer and wine are allowed at the Lodge.

Give us a call today at 222-3424 to check availability today!



PARKS & TRAILS MAP

WEST DES MOINES PARKS & RECREATION





"Iowa By Trail" App

available FREE on Apple devices

Visit the iTunes App Store to download
(android version coming soon)

JORDAN CREEK TRAIL





Breakfast with Santa

Join us for this fun, festive, holiday breakfast featuring Santa Claus himself!! Our event features an all you can eat pancake breakfast, catered by "Chris Cakes." Photos on Santa's lap will be available so be sure to bring your camera! Limited admission will be available for purchase at the door. Please be sure to register early.

DAY	Saturday
DATE	December 13
TIME	8 – 10am (Open house format)
LOCATION	Raccoon River Park Nature Lodge
FEE	per person
ages 12+	\$6
ages 2 – 11	\$4
under 2 years	FREE
REGISTER BY	November 21
PROGRAM #	14332

This is Santa Calling

Have you been naughty or nice? This is a free service for children 3-6 years old who are West Des Moines residents. If your child would like to receive a call from Santa, just call the North Pole Extension Office at 222-3444 or email the elves at ParkRec@wdm.iowa.gov. You will be sent an information sheet to **RETURN** to Santa **before the December 10 deadline**.

DAY	Monday
DATE	December 15
TIME	6 – 7:30pm



Daddy Daughter Sweetheart Dance

Join us at the historic Val Air Ballroom for this annual community event that provides a unique opportunity for fathers, or father figures, and their daughters to spend an evening together. A child-friendly, light Italian meal will be served by Christiani's Catering, along with a variety of desserts during the festivities. A video DJ, Thunder and Lightning, will WOW the crowd with two huge video screens and family-friendly music. Photos will be available from University Photo for a small fee, and a box of conversation hearts and a balloon will be handed to each girl at departure. Plan ahead and don't miss out!

DAY	Sunday
DATE	February 8
TIME	4 – 7pm
LOCATION	Val Air Ballroom 301 Ashworth Rd.
AGES	4 – 11
FEE	\$18 per person

**VAL AIR
BALLROOM**

PLEASE NOTE: *This is a ticketed event through TicketWeb. To avoid convenience charges, tickets may be purchased at the Parks and Recreation office. Convenience charges apply to all tickets purchased through TicketWeb.com. All phone and internet sales end on February 4th. After this date, tickets will only be available at the Parks and Recreation office located at 4200 Mills Civic Parkway in West Des Moines.*



DAY	Thursday
DATE	November 20
TIME	5pm – 8pm
LOCATION	WDM Community Center South Dining Room
FEE	FREE ADMISSION!

One Stop Shopping

Are you looking for a unique gift for the Holidays? Do you enjoy the products sold at “Home Shows” but haven’t had the time or energy to host a party? Well, we’ve got the answer for you! Representatives from several home based businesses will gather to display their products, all under one roof. Let this unique event take some stress off of your Holiday shopping by bringing these wonderful products to you! This will be held in conjunction with Valley Junction’s first “Jingle in the Junction” event. What a great way to shop and prepare for the Holidays in a unique retail district.

Dog Behavior

If you are a member of the West Des Moines Dog Park you see all sorts of dog behavior. Do you wonder why that crazy Westie is always ambushing your pooch or why dogs play so rough? Come join Susan Barnes owner/trainer of MYTDOG as she explains dog behavior. You will learn tips on how to identify an aggressive dog and how to keep your dog out of dog altercations. This class is free of cost and those that attend will receive a \$5.00 voucher good toward their dog park pass.

DAY	DATE	TIME	PROGRAM #
Saturday	December 6	9:30am	11415
Tuesday	January 20	6:30pm	11416
LOCATION	Raccoon River Park Nature Lodge		
FEE	FREE		



PRESCHOOL PROGRAMS



NEW TIME!

Indoor Playground

Need to get out of the house and let that toddler run off some steam? We've created an indoor playground that can help get the job done. Toys, slides, and riding toys will challenge your child for a day of fun! Parents are required to stay and supervise their children.

DAYS	Mondays & Wednesdays
DATES	October 15 – December 17 and January 5 – April 8 (No class on November 19)
TIME	10am – 12pm
LOCATION	WDM Community Center
AGES	4 years & under with adult
FEE	FREE
(No Indoor Playground when school is not in session.)	

Tumble Tots

Tumble Tots is a beginning tumbling program for boys and girls ages three and four. This course will focus on forward rolls, backward rolls and walking on a "balance beam." Class size is limited to 15 participants.

DAY	Thursdays
DATES	January 8 – 29
TIME	5:30 – 6:15pm
AGES	3 – 4
LOCATION	Raccoon River Park Nature Lodge
FEE	\$29
PROGRAM #	14372



Story Hour At The Nature Lodge

If cabin fever has struck, bring your children to the Nature Lodge to enjoy a story hour with our Naturalist. Bring a sack lunch to enjoy as we share nature books, stories and games.

DAY	Tuesdays
DATES	December 2, 9, 16
TIME	12 – 1pm
LOCATION	Raccoon River Park Nature Lodge
AGES	All
FEE	Free

Fun Time Story Time

Does winter have you down? Looking for someplace new to take your child that is safe and fun? Join us at the Valley Community Center for a little story time fun! We will read a couple of stories, share some cool animals and have plenty of extra play time at the indoor play center. There is no need to register. Just show up, and join the fun!

DAY	Tuesdays
DATES	January – February
TIME	10 – 11am
LOCATION	Valley Community Center (4444 Fuller Road, WDM)
AGES	All
FEE	Free

First Steps Dance Classes

First Steps Dance classes are designed to introduce children to the fundamental skills of dance at a cost and time commitment that is minimal to parents. All classes are led by Josalynn Agnew, an instructor with many years of studio experience.

Let your child learn basic dance movements in a non-threatening, recreational environment!

- 3-4 year olds will receive instruction in ballet and jazz.
- 5-7 year olds will receive instruction in ballet, jazz, and tap.

No special shoes are required.

The registration fee covers all 6 weeks of instruction and a t-shirt.

DAYS	Tuesdays	
DATES	January 6 – February 10	
AGES	TIME	PROGRAM #
3 – 4	5:30 – 6pm	14361
3 – 4	6 – 6:30pm	14362
5 – 7	6:30 – 7:30pm	14363
LOCATION	WDM Community Center	
FEE	\$39	

DAYS	Tuesdays	
DATES	February 24 – April 7 (No class on March 17)	
AGES	TIME	PROGRAM #
3 – 4	5:30 – 6pm	14365
3 – 4	6 – 6:30pm	14366
5 – 7	6:30 – 7:30pm	14367
LOCATION	WDM Community Center	
FEE	\$39	



START SMART

Start Smart Programs will be held once a week for 5 weeks, and each week the exercises become increasingly more difficult as the class progresses and the children show improvement. All supplies needed for Start Smart programs are provided at the first class and are included in the program fee.

A parent is required to attend and participate each week. It is recommended that non-registered siblings do not attend as it makes it difficult for parents to fully participate in the program.

Basketball

Start Smart Basketball teaches children (ages 3-5) the basic motor skills necessary to play organized basketball while they work one-on-one and spend quality time with their parents. The program focuses on teaching children and their parents skills in dribbling/ ball handling, passing/catching, shooting and running/agility without the threat of competition or the fear of getting hurt.

DAYS	Thursdays
DATES	January 8 – February 5
TIME	5:30 – 6:30pm
LOCATION	Crestview Elementary Gym
AGES	3 – 5
FEE	\$60
PROGRAM #	14370



Sports Development

The Start Smart Sports Development Program is a developmentally appropriate introductory sports program for children 3-5 years old. The program prepares children for organized sports, in a fun non-threatening environment.

The Start Smart Sports Development Program prepares children and their parents for organized sports without the threat of competition or the fear of getting hurt. Age appropriate equipment from Franklin Sports® and Hasbro® is used in teaching throwing, catching, batting and kicking.

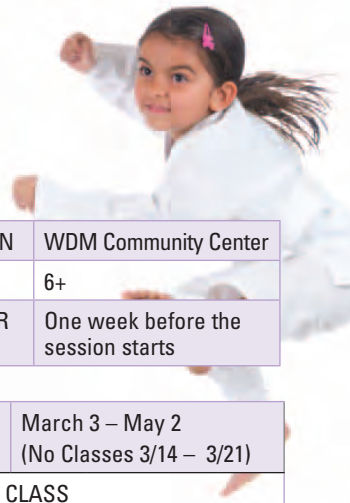
DAYS	Tuesdays
DATES	March 24 – April 21
TIME	5:30 – 6:30pm
LOCATION	Crossroads Park Elementary Gym
AGES	3 – 5
FEE	\$65
PROGRAM #	14371

WEATHER CANCELLATION HOTLINE: 222-3500

MARTIAL ARTS

Tae-Kwon-Do/Karate

The Korean art of self defense, Tae-Kwon-Do is recognized as a beneficial method of improving health, balance, agility and poise. As a philosophy of mental alertness and moral ethics, TKD can serve to enhance anyone's life young or old. Beginner classes are for white through green belts. Intermediate/Advanced classes are for green belts and up.



LOCATION	WDM Community Center
AGES	6+
REGISTER BY	One week before the session starts

Session I	January 6 – February 28 (No Class 2/21)		
BEGINNER CLASS			
DAY	TIME		
Tuesdays	6:30 – 7:30pm		
Saturdays	9 – 10am		
PROGRAM #	14378		
FEE	\$41		
INTERMEDIATE/ADVANCED CLASS			
DAY	TIME		
Tuesdays	7:30 – 8:30pm		
Saturdays	10 – 11am		
PROGRAM #	14379		
FEE	\$41		

Session II	March 3 – May 2 (No Classes 3/14 – 3/21)		
BEGINNER CLASS			
DAY	TIME		
Tuesdays	6:30 – 7:30pm		
Saturdays	9 – 10am		
PROGRAM #	14380		
FEE	\$41		
INTERMEDIATE/ADVANCED CLASS			
DAY	TIME		
Tuesdays	7:30 – 8:30pm		
Saturdays	10 – 11am		
PROGRAM #	14381		
FEE	\$41		

Little Ninjas

Join our early childhood program designed to teach the basic fundamentals of both Tae-Kwon-Do and Karate. This class will focus on building self- respect, self-confidence, coordination of mind and body, and self-discipline.

Session I	January 6 – February 28 (No Class 2/21)		
DAY	TIME	PROGRAM #	FEE
Tuesdays	5:30 – 6pm	14382	\$28
Tuesdays	6 – 6:30pm	14383	\$28
Saturdays	8:30 – 9am	14384	\$25
Session II	March 3 – May 2 (No Classes 3/ 14 – 3/ 21)		
DAY	TIME	PROGRAM #	FEE
Tuesdays	5:30 – 6pm	14385	\$28
Tuesdays	6 – 6:30pm	14386	\$28
Saturdays	8:30 – 9am	14387	\$25

LOCATION	WDM Community Center
AGES	4 – 5
REGISTER BY	One week before the session starts

**TAE-KWON-DO/ KARATE
LITTLE NINJAS INSTRUCTOR:
Phil Dickey:**

*Fifth Degree Black Belt in Karate,
Fourth Degree Black Belt in Tae-Kwon-Do, International Martial Arts Hall of Fame Inductee.*

Lee Cole's Magicamp

Magicamp is for anyone who likes to have fun. You'll spend two days learning from professional magician Lee Cole on how to entertain and amaze your friends, family and classmates. You'll learn tricks that can be done anywhere, at any time, and for the rest of your life. This two day camp will be held at the West Des Moines Community Center. All magic materials are provided.

DAYS	Tuesday and Thursday
DATES	March 17 and 19
TIME	9 – 11:45am
LOCATION	WDM Community Center
AGES	8 – 15
FEE	\$45
PROGRAM #	14368

NEW!

Spring Break Archery

Looking for something fun to do during your spring break? How about spending some time at the Raccoon River Archery Range? You will have the opportunity to practice your archery skills and possibly learn some new ones in this spring break day camp.

DAYS	Thursday and Friday	
DATES	March 19 and 20	
TIME	LEVEL	PROGRAM #
	9am – 12pm	Beginner 14417
1 – 4pm	Novice	14418
LOCATION	Raccoon River Park Nature Lodge	
AGES	9 – 12	
FEE	\$25	

Hunter Education

Anyone born after January 1, 1972 is required to complete a 12 hour Hunter Safety Course before they can obtain an Iowa hunting license. The two-day course includes instruction on safe handling of firearms and archery equipment, as well as information on hunter ethics, conservation management and hunting regulations.

DAY	DATE	TIME
Must attend both days		
Thursday	March 19	6 – 9pm
Saturday	March 21	8am – 5pm
(please bring a sack lunch on Sat.)		
LOCATION	Raccoon River Park Nature Lodge	
AGES	12+	
FEE	Free	
TO REGISTER	http://www.iowadnr.gov/training (Class will be posted after Feb. 1)	



WDM YOUTH SPORTS ORGANIZATIONS

Youth sports in West Des Moines are coordinated by a variety of organizations. These groups are not organized by the City of West Des Moines Parks and Recreation Department; however some of them may utilize city facilities. For a comprehensive listing of a variety of youth sports information and links to web sites visit

www.wdm.iowa.gov/youthsports.

The youth sports organizations listed below will begin registration for summer 2015 activities soon. Contact each organization directly for complete information to get your child registered.

WDM Soccer Club

P.O. Box 27008 | West Des Moines, IA 50265 | 515-222-0079

Email: wdmadmin@wdmsoccerclub.org | Web Site: www.wdmsoccerclub.org

WDM Girls Softball

P.O. Box 65602 | West Des Moines, IA 50265

Email: wdmgsoftball@gmail.com | Web Site: www.WDMsoftball.org

WDM Youth Baseball

890 SE Olson Dr. | Waukee IA 50263 | 515-987-0806

Email: frontdesk@sportsplexwest.com | Web Site: www.OBLOfWDM.com



Let's Paint With Colors!

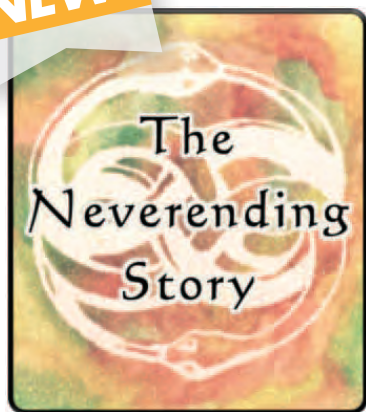
In this class children will use acrylic paints on canvas. Children will be given instruction on how to paint their chosen picture from an array of provided images. Please have your child bring a painting shirt. Don't forget to send them with a smile and willingness to have fun!

This class will be taught by Nyki Christ, a graphic designer, painter, muralist, and former student of Miranda Keytes Studio. The program fee covers all supplies needed for this program.

DAYS	Mondays
DATES	November 17 – December 15
TIME	5:30 – 6:30pm
LOCATION	WDM Community Center
AGES	6 – 11
FEE	\$55
PROGRAM #	14402

DAYS	Mondays
DATES	January 19 – February 23
TIME	5:30 – 6:30pm
LOCATION	WDM Community Center
AGES	6 – 11
FEE	\$55
PROGRAM #	14403

NEW!



The Neverending Story

We're so excited to offer this wonderful story for our spring production! Based on the modern classic, our show will feature traditional theatre as well as puppetry and other creative elements. Kids and teens can be involved in several ways according to age and interest.



You can learn more about Sarah Hobart and Whippoorwill Theatre at www.whippoorwilltheatre.com

The Neverending Story Lead Role

AUDITION DATES	January 5, 6 & 7 at 6:30 – 9pm (no registration necessary)
REHEARSAL DATES	Monday – Thursday, January 12 – March 12 at 6:30-9pm
*Participants won't be required at every rehearsal, but must be available if called. Rehearsal schedules will be posted at least a week in advance.	
PERFORMANCE DATES	Friday, March 13 at 7pm Saturday, March 14 at 3pm Sunday, March 15 at 3pm
LOCATION	WDM Community Center
AGES	8 – 18
FEE	FREE!

Acting Workshop

Participants will learn stage and acting skills during the process of rehearsing their parts in The Neverending Story show. In addition to the regular rehearsal days, participants must also be available for all dress rehearsals and performances.

Note: Actors under 8 may sign up with the directors' permission based on our prior experience with them and/or parent and teacher recommendation.

PROGRAM #	DAYS	DATES	FEE
14397	Mondays	January 12 – March 9	\$99
14398	Thursdays	January 15 – March 12	\$99
14399	Mondays and Thursdays	January 12 – March 12	\$149
TIME	6:30 – 8:30pm		
LOCATION	WDM Community Center		
AGES	8 – 18		
CLASS SIZE	Minimum: 5 Maximum: 15		

Theatrecraft!

Are you super creative? Do you love arts? Crafts? Costumes? Building stuff? We'll be offering a new option with this production of The Neverending Story for kids (and adults!) who would like to learn some of the skills needed behind-the-scenes. During our workshops we will learn all about what makes a performance tick, while actually building the puppets, costumes, sets, props, etc. needed for the show. Kids 8-18 are welcome. Interested adults should contact WhippoorwillTheatre@gmail.com for more information. Participants in the Theatrecraft workshop are not required to attend rehearsals and performances unless they elect to take on a behind-the-scenes task such as stagehand, etc.

PROGRAM #	DAYS	DATES	TIME
14400	Tuesdays	January 20 – March 10	6:30 – 8:30pm
AGES	LOCATION	FEE	
8 – 18	WDM Community Center	\$75	
CLASS SIZE	Minimum: 3 Maximum: 15		

Tiny Monsters!

This option is for our littlest actors. The Neverending Story allows for some wonderfully creative casting. We plan to incorporate our youngest actors in the show as little imps, goblins, vampires and the like. Our 6 week session will introduce young kids to theatre methods, vocabulary and techniques and will get them involved in theatre in a very real way. In addition to the 6 weekly sessions, participants must be available for dress rehearsals and performance evenings March 10-15.

PROGRAM #	DAYS	DATES	TIME
14401	Tuesdays	February 3 – March 10	5 – 6:15pm
AGES	LOCATION	FEE	
8 – 18	WDM Community Center	\$75	
CLASS SIZE	Minimum: 5 Maximum: 15		



Birthday Parties At The Nature Lodge

Birthdays are special, and we have some great ways to celebrate them! Choose from various themes and locations, and leave the planning details to us!! Our parties include: set up; a reserved space for your event; a party host or hostess; a theme related activity; cake; ice cream; juice; paper goods; and most importantly....the clean up!! All parties cost \$110 for the first 12 participants (including the

birthday child) and are two hours in length. An additional fee of \$10 per child will be charged for parties larger than 12, with a maximum of 15 participants allowed. *PLEASE NOTE: All party participants must meet the minimum age required for each specific party!!* To schedule your special date, please call 222-3424. Reservations must be made at least 2 weeks in advance.

THEME	AGE <i>(of all party participants)</i>
Frozen	4-7
Amazing Animals	4-7
Prehistoric Pals	4-7
Flower Power	5-7
Pajama Party	5-7
Star Wars	5-7

Party themes are effective November 1st.



Parties @ THE WDM Teen Center

Are you looking for something new to do for your child's birthday this year? Want to take your youth group somewhere they haven't been yet? Just looking to have fun with your friends for a night?

Then the WDM Teen Center is the place for your next party!

Choose 2 elements for your party from the list below. We will provide the staff, the facility, the snacks, the set-up and the clean-up. All you have to do is come and enjoy yourself and thrill your guests!

Location: 1401 Vine Street
Days/Time: M — F • 6:30pm – 8:30pm
Fee: \$120 for the first 15 participants
(\$5 per additional participant with a max of 30 participants)



PARTY ELEMENTS (pick any 2)

Rock Wall Warriors

We have an 18 ft high rock climbing wall that can climb 2 people at a time. We have all the necessary equipment. Anyone wanting to climb must wear tennis/climbing shoes and complete an activity waiver.

Movie Mania

We will set up our sound system and projector to create a movie theater experience for your group. Popcorn is included for your guests. You help pick the movie.

Vigorous Video Games

We will get you set up on the Xbox 360, Kinect, Wii, or Playstation. We have a wide range of games to choose from.

Rec Room Revelry

We have a pool table, ping pong table, foosball table, basketball spot shot, and air hockey table all for you to enjoy. We can even set up a tournament for you and your guests to challenge each other throughout the evening.

Karaoke Kraziness

We will set up our sound system and projector to rock out with your friends. We have loads of songs for you to choose from.

Call 222-3444
to schedule your
party today!

Reservations must be
made at least two weeks
in advance.



JOIN IN ON THE FUN!

TEEN WEST DES MOINES CENTER

VIDEO GAMES
TABLE GAMES
ROCK CLIMBING WALL
AND MUCH MORE

1401 Vine Street • 515.202.5169

HOURS:

Monday • Tuesday • Thursday • Friday 2:30pm – 6pm
Wednesday 1:50pm – 6pm

What the WDM Teen Center is all about.

Headed up by the West Des Moines Parks and Recreation Department, The WDM Teen Center opened its doors in the Fall of 2006. Working jointly with WDM Community Education and the WDM Community School District (WDMCSD) the Teen Center provides a safe and recreational environment for students from Stillwell Junior High, Indian Hills Junior High and Valley Southwoods! The Teen Center features movie days, cooking classes, pool tourneys, guest speakers, sports, study time, leadership games, and dances, among other activities. User survey results show 76% of youth stay at the Center for two hours or more, and 69% say it is likely they would be home alone if they could not attend the Teen Center. Community support has truly made this a safe and fun environment for the youth of West Des Moines. The Teen Center follows the WDMCSD calendar and is not open when school is closed. The Teen Center will also be closed when there is an early dismissal or when school is cancelled due to inclement weather.



Your kids will find great things to do at the Teen Center.

From video games to Internet access, your child will find a large variety of activities to keep them busy while they are at the Teen Center.

The WDM Teen Center has 8 computers that have Internet access. This access is filtered through the WDMCSD's safety settings. So basically, anything they can access at school, they can access at the Teen Center, or vice versa. Students sign up for time slots each day in which they can use the computers. A staff member is always in the room when computers are being used. The Teen Center has been fortunate in receiving many donations throughout its short history. Some of these include a pool table, foosball table, 2 Wii game systems, an Xbox 360, a rock climbing wall, numerous books, puzzles, craft supplies, and much, much more. One day each week is known as the Snack Shack day. Students can purchase after-school concessions and often help in the management of the Snack Shack.

Field trips are often scheduled where staff take up to 10 students off-site for either a recreational or service-oriented activity. Of course, studying is always allowed and staff members are more than willing to help your child with daily assignments and homework. And finally, most Teen Center attendees like to just sit around in one of our many furnished areas and chat with friends.

Why you need to register your child today.

To ensure your child's access to the Teen Center, please register them on-line.

Each student wanting to attend the Teen Center must register. Students will be admitted to the Teen Center by scanning the school ID each day of attendance. This will need to be done when they arrive and when they leave each day. Students can only sign in and out one time per day.

The West Des Moines Teen Center will be charging a yearly registration fee of \$50 per student. Each student is allowed up to 3 FREE visits to the Teen Center. The \$50 fee will be charged if a child has used the Teen Center more than 3 times. If payment is not received after the third visit, admittance will not be granted on the student's next visit.

Your child can be registered and the registration fee can be paid on-line at <https://reconline.wdm-ia.com> using the program # 14224.

Discipline Policy at the Teen Center

The Teen center uses the "3 Strikes You're Out" method of discipline. A detailed record of each offense will be kept on file. Parents will be notified their child has received a strike. The first strike will result in removal from the Teen Center for the day. The second strike will result in removal from the Teen Center for 5 school days. The third strike will result in removal from the Teen Center for the remainder of the school year. The Teen Center is a Zero Tolerance facility, and the discipline for all offense will be left to the Teen Center staff members' discretion.



Follow the WDM Teen Center on Facebook.

WDM Teen Center Registration Form and Registrant Handbook can be found at

www.wdm.iowa.gov/teencenter



**American
Red Cross**

ADVANCE REGISTRATION REQUIRED.

For class locations or to register, call

1-800-RED CROSS or visit
redcross.org/takeaclass

Baby-Sitter Training

This course gives youth ages 11 to 15 years old the knowledge and confidence to care for infants and school-age children. Combining video, activities, hands-on skills training and discussion for a complete learning experience, Babysitter's Training teaches youth how to:

- Respond to emergencies and illnesses with first aid, rescue breathing and other appropriate care
- Make decisions under pressure
- Communicate with parents to learn household rules
- Recognize safety and hygiene issues
- Manage young children
- Feed, diaper and care for infants
- Start their babysitting business

*Be sure to bring a sack lunch.



CLASS DATES	CLASS TIMES
January 10	8:30am – 3:30pm
March 14	8:30am – 3:30pm
May 16	8:30am – 3:30pm

Adult And Pediatric First Aid CPR/AED And Bloodborne Pathogen*

Training meets OSHA Guidelines for First Aid Programs and combines lecture, interactive video demonstrations and hands-on training to teach participants lifesaving skills.

- **First Aid:** Participants learn to recognize and care for a variety of first aid emergencies, such as burns, cuts and scrapes, sudden illnesses, head, neck and back injuries, and heat and cold emergencies.
- **CPR/AED Adult:** Participants learn how to perform CPR, use and AED, and care for breathing and cardiac emergencies in adults.
- **CPR/AED Child and Infant:** Participants learn how to prevent, recognize and respond to cardiac and breathing emergencies in infants and children under 12.
- **Bloodborne Pathogens:** This training course is designed for workers at risk for on-the-job exposure to blood or other body fluids that could cause infection.

*This full course meets requirements for childcare providers in the state of Iowa. You can also register for a smaller combination such as Adult CPR/AED by calling **1-800-REDCROSS** or visiting our website at www.redcross.org/takeaclass to see all of our scheduled class combinations.



CLASS DATES	CLASS TIMES
February 21	8:30am – 4:30pm
April 25	8:30am – 4:30pm



**American
Red Cross**

CALL **222.3441** FOR MORE INFORMATION ON WATER SAFETY INSTRUCTOR COURSES AND LIFEGUARD TRAINING CLASSES.

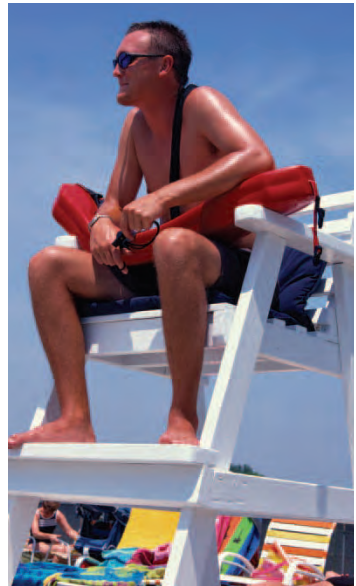
Both Classes will be Blended Learning, students will do most of the Book Work at home on computer.

Lifeguard Training Course

PRE-REQUISITES FOR CLASS:

- Minimum age: 15 years
- Swim 300 yards continuously.
- Tread water for 2 minutes using only the legs.
- Complete a timed event within 1 minute, 40 seconds.
- Starting in the water, swim 20 yards.
- Surface dive to a depth of 7 to 10 feet to retrieve a 10-pound object.
- Return to the surface and swim 20 yards on the back to return to the starting point.
- Exit the water without using a ladder or steps.

DAYS	Mondays and Wednesdays
DATES	February 16 – March 11
TIME	6 – 10pm
LOCATION	Dowling Catholic High School
FEES	\$125 WDM Parks & Recreation + \$35 Red Cross Online Portion
PROGRAM #	14375
REGISTER BY	February 4



Water Safety Instructor

To train instructor candidates to teach water safety, including the Basic Water Rescue and Personal Water Safety courses, six levels of Learn-to-Swim, three levels of Preschool Aquatics and two levels of Parent and Child Aquatics Prerequisites. Fundamentals of Instructor Training certificate included. Must be at least 16 years of age.

DAYS	Tuesdays and Thursdays
DATES	February 24 – March 12
TIME	6 – 10pm
LOCATION	Dowling Catholic High School
FEE	\$125 WDM Parks & Recreation + \$35 Red Cross Online Portion
PROGRAM #	14377
REGISTER BY	February 11





Water Aerobics

Get out and enjoy some fun in the water and get a workout at the same time. This 45 minute cardio workout with water resistance is perfect for people of all ages and abilities. Classes are held in shallow water so even non-swimmers can enjoy this unique workout.

DAYS	Tuesday/Thursday
Session 1	January 6 – February 12
PROGRAM #	14374
Session 2	February 17 – March 26
PROGRAM #	14373
TIME	7:45pm – 8:30pm
LOCATION	Valley High School Pool
FEES	\$35 per session

Open Swimming at Valley High Pool

Bored and need something to do? Check out open swim on Sundays at Valley Pool. West Des Moines Senior Citizens over 55 swim free! Program is co-sponsored by West Des Moines Community Education.

DAYS	Sundays
DATES	January 11 – March 1
TIME	1 – 4pm (Lap Lanes Available)
FEE	\$2 per person (WDM senior citizens 55+ swim free!)

BALLROOM DANCING

Mixed Level I and II Absolute Beginner and Beyond

This ballroom class is for anyone who is an absolute beginner, never danced before, or may have 2 left feet and for anyone who has some knowledge of various ballroom dances. It will be a great class for those who need to review their Level I – Absolute Beginner Ballroom class and for those who would like to add additional figures beyond that class. This course teaches 6 dances during this class and the dances being taught are: Foxtrot, Swing (East Coast), Waltz, Rumba and introduction to Tango and Cha Cha except in the 6 week class when only the first 4 dances will be taught. Jim and Suzi will teach 4-6 figures in each dance as we progress through the class. When you complete this course you should be comfortable going to wedding reception dances, cruises, or social dances at business functions and various venues around the Greater Des Moines Area.

DAY	Sundays			
TIME	12:30 – 1:30pm			
DATES	# OF WEEKS	PROGRAM #	FEE per person	
January 11 – March 1	8	14390	\$65	
March 8 – May 3 (No class April 5)	8	14391	\$65	
LOCATION	WDM Community Center			

DAY	Thursdays			
TIME	6:30 – 7:30pm			
DATES	# OF WEEKS	PROGRAM #	FEE per person	
January 8 – February 26	8	14388	\$65	
March 5 – April 23	8	14389	\$65	
LOCATION	WDM Community Center			



Level III Intermediate

This ballroom class is for anyone who has completed Level I and Level II classes or has equivalent experience in dancing and training. These classes are intended as a follow-on course for the Level I and Level II Ballroom students. If you have not had this previous class but you know 5-8 figures in Foxtrot, Swing, Waltz, and Rumba and a few figures in Tango and Cha Cha; you are welcome to join this class. If you know some of these dances well you may attend the associated classes.

This course teaches 1 dance for 2 or 3 weeks before moving on to another dance. Jim and Suzi will review all the figures taught in previous Level I and Level II Ballroom classes. They will then add figures and technique with an additional 3-4 figures being added to each dance as we progress through the class. This is not a single course and as many as 6 months will be required to cover all the various dances being taught at this level. Any dance not included in the normal Level I and Level II Ballroom class curriculum will be taught at a beginning level as we introduce new dances to the students.

When you complete this course you should be very comfortable dancing at any social event any where and perhaps using your dancing for formation teams, showcases, or even (for the more daring) competing at some event.

DAY	Sundays			
TIME	1:30 – 2:30pm			
DATES	# OF WEEKS	PROGRAM #	FEE per person	
January 11 – March 1	8	14392	\$65	
March 8 – May 3 (No class April 5)	8	14393	\$65	
LOCATION	WDM Community Center			

ADULT FITNESS



ZUMBA Fitness®

Starting to exercise, returning to it or want the newest dance fitness program in town? Are you ready to party yourself into shape? ZUMBA Fitness® provides an invigorating, effective, easy to follow, Latin-inspired, calorie-burning dance for the active enthusiast. No previous experience is necessary. 12 yrs and older welcome. You will be taught the steps and encouraged to groove at your own pace. Wear comfortable clothes, athletic shoes and bring a water bottle! Good time guaranteed! Please check with your physician prior to starting any fitness routine. No classes on any holidays.

JOIN AT ANY TIME!

DAY	TIME
Monday	5:15 – 6:15pm
Tuesday	4:15 – 5:05pm
Wednesday	5:30 – 6:30pm
Thursday	5:15 – 6:15pm
LOCATION	WDM Community Center
AGES	12+
FEE	<ul style="list-style-type: none"> • Unlimited monthly classes for \$35 • 8-class punch card for \$50



FOR MORE INFORMATION OR TO REGISTER PLEASE CALL EVA:
515-419-9523 OR 515-779-0467 • zumbafunfiesta.com

Beginner To Intermediate Acrylic Painting

In this class, adults will learn to paint a very simplistic still life that is full of life and color. Registrants will start out with a preliminary idea of their choosing, followed by a finished acrylic painting that they will be proud to show to their family and friends!

Registrants are asked to bring an old paint shirt and can feel free to bring their own acrylics or brushes if they like.

This class will be taught by Nyki Christ, a graphic designer, painter, muralist, and former student of Miranda Keytes Studio. The program fee covers all supplies needed for this program.

DAYS	Wednesdays
DATES	November 19 – December 17 (No class on November 26)
TIME	6 – 7pm
LOCATION	WDM Community Center
AGES	16+
FEE	\$55
PROGRAM #	14404

DAYS	Wednesdays
DATES	January 21 – February 25
TIME	6 – 7pm
LOCATION	WDM Community Center
AGES	16+
FEE	\$65
PROGRAM #	14405



OPEN GYM

Volleyball Open Gym

Bring your friends for an exercise filled evening of recreational volleyball.

DAYS	Tuesdays
DATES	November 18 – March 3 (Not held 12/23 & 12/30)
TIME	6:30 – 10pm
LOCATION	Jordan Creek Elementary 4105 Fuller Road
FEE	\$2 WDM residents \$3 non-residents

Coed Badminton Open Gym

Drop in for pick-up badminton matches.

DAYS	Sundays
DATES	September 7, 2014 – May 31, 2015
TIME	2:30 – 5pm
LOCATION	Valley Southwoods 625 S. 35th Street
FEE	\$2 WDM residents \$3 non-residents



Men's "60 Plus" Drop-In Softball

Get energized by enjoying the outdoors at the Raccoon River Park Softball Complex for a fun game of softball. For men 58 and older by Dec. 31, 2015.

DAYS	Tuesdays and Thursdays
DATES	April 14 – October 15
LENGTH	25 Weeks
LOCATION	Raccoon River Park Softball Complex
FEE	\$2 WDM residents \$3 non-residents
PROVIDED	Bases, Strike Zone Carpet, Game Balls, and Scorekeeper
BRING	Bats, Gloves, and Back-up Balls

Basketball Open Gym

Stop by the gym and shoot some baskets or play in a pick-up game of basketball.

DAYS	Mondays
DATES	November 17 – February 23 (Not held 12/22 & 12/29)
TIME	6:30 – 10pm
AGES	18+
LOCATION	Westridge Elementary 5500 EP True Pkwy
FEE	\$2 WDM residents \$3 non-residents

DAYS	Saturdays
DATES	December 6 – February 28 (Not held 12/27 & 1/3)
TIME	1 – 4pm
AGES	18+
LOCATION	Westridge Elementary 5500 EP True Pkwy
FEE	\$2 WDM residents \$3 non-residents



ADULT SPORTS

Adult Mens and Coed Softball Leagues

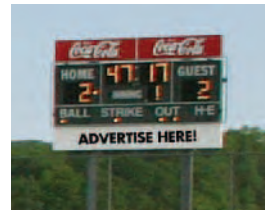
The West Des Moines Parks and Recreation Department will begin accepting applications for our upcoming Adult Mens And Coed Softball Leagues starting in February. For registration information or to be placed on our emailing list, please contact the Parks & Recreation office at 222-3444 or information will be posted at www.wdm.iowa.gov/AdultSports in February.

START DATE	Week of Sunday, April 19, 2015
DAY	LEAGUE
Sunday	Coed Recreation (Levels C – D)
Thursday	Coed Recreation
Thursday	Mens Recreation Doubleheader
Sunday	Mens Commercial 50+ League
TU & TH AM	Mens Recreation 60+ Drop-In
Monday	Mens Recreation Doubleheader
Tuesday	Mens Commercial Doubleheader C
Wednesday	Mens Commercial Doubleheader D
Wednesday	Mens Commercial 50+ "Draft" League
Thursday	Coed Commercial

LOCATION	Raccoon River Softball Complex
AGES	Adults (18 & older and out of high school)
DEADLINE	Thursday, March 5, 2015

Scoreboard Advertising Opportunity

Please contact Bruce at **222-3454** for details.



Adult Athletic League Team Acceptance Policy

A team admission priority policy was adopted by the WDM Recreation Department in 1992. **It applies to all adult athletic leagues.** The order of priority is as follows:

1st	Returning Teams: Teams who participated in the league the previous season of the current year. (If applicable)
2nd	Returning Teams: Teams who participated in the league the previous year.
3rd	Returning Teams: Teams may be placed in another division at the Department's discretion to equalize competition.
4th	New Teams: Teams that did not participate in the league the previous season or year.
5th	Late Teams: Any team that does not meet the established deadlines set forth by the Department for applications, rosters and fees will be accepted at the Departments discretion.

If more teams apply than we have space for, priority will be given to teams with the highest percentage of players on their roster residing within the city of west des moines, in all cases.



Raccoon River Park Softball Complex Field Rental

If you need a facility to easily handle a very large (25-45 team) tournament or a small group just renting one field for an employee, family or friendly softball outing, West Des Moines Parks and Recreation welcomes and encourages community use of this facility when not in use by league play or previously scheduled tournaments.

Concessions will be opened for use for all rentals guaranteeing at least 12 teams. Field prep of mowing outfields, grooming and lining infields is included in all rental fees. Tax is also included in all rental fees. Deposit must accompany agreement to reserve dates.

AVAILABILITY

Friday nights	5 – 10:15pm
Saturdays	8am – 10:15pm
Sundays	8am – 4pm
Weekdays	8am – 4pm

RENTAL FEES

Damage/Cleaning Deposit	\$500 per weekend	
Score board Controller Deposit	\$10 per field, per day	
FIELD RENTAL FEES	NUMBER OF TEAMS	PRICE PER GAME
Adult Softball Tourney Rental	20+	\$5
Adult Softball Tourney Rental	Less than 20	\$10
Youth Tourney Rental		\$25
Hourly Rental	\$25 per field, per hour	
*Field Light Usage Fees (assessed only for actual use)	\$35 per hour, per field	
Field Equipment Rental Vehicle (Utility Vehicle and/or Field Groomer)	\$50 per day, per vehicle	
Temporary Fence Set Up/Tear Down	\$100 per field	
Merchandise Sales Commission	10% of gross sales	

* Fridays — FREE Light Fees with Saturday & Sunday Rental

Call Bruce at 222-3454, email Bruce.Mankle@wdm.iowa.gov
or visit www.wdm.iowa.gov/index.aspx?page=234 for more info.

ADULT SPORTS

“The Finals” Men’s Basketball Tournament

West Des Moines Parks and Recreation will again be hosting “The Finals” Men’s 5 on 5 basketball tournament. CASH PRIZES AND TROPHIES IN EACH DIVISION. Please call 222-3444 to have an entry form emailed or sent to you.

DAYS	Friday night – Sunday night
DATES	March 27 – 29
DIVISIONS	PROGRAM #
High Power	14341
Low Power	14342
LOCATIONS	Valley High School & Valley Southwoods School
FEE	\$106 per team (tax included)
DEADLINE	Monday, March 16 by 4pm



NEW!

“DISNEY ON ICE” PRESENTS: FROZEN

Enter a fantastical winter wonderland beyond all imagination as Disney On Ice presents Frozen! The heartwarming, Academy Award-winning tale you love is now LIVE and skating into the Target Center of Minneapolis. You'll be magically whisked away into the wintry world of Arendelle, where you will be dazzled by amazing special effects and astonishing skating. Sing and dance along to inspiring songs, including “Let It Go.” Join royal sisters Elsa and Anna, the hilarious snowman Olaf, Kristoff, his loyal reindeer Sven and the mystical trolls as they journey to discover that true love is ultimately the most magical power of all! Hosted by Mickey Mouse and Minnie Mouse, with special guest appearances by your most beloved Disney Princesses and characters from favorites like Disney Pixar’s Toy Story, Finding Nemo and Disney’s The Lion King, this unforgettable celebration of love and friendship will leave your family with memories to last a lifetime. This overnight trip includes transportation, free time at the MOA, your hotel stay at the Edina Residence Inn, breakfast and your ticket to the Sunday matinee performance. We have reserved seating in section 111, so be sure to register early!



DAYS	Saturday – Sunday
DATE	April 11 – 12
TIME	TBA
LOCATION	Minneapolis, MN
FEE	\$159/person double \$149/person triple \$139/person quad \$224/person single
REGISTER BY	March 21
DEPARTURE LOCATION	WDM City Hall
PROGRAM #	14335

A \$100 non-refundable deposit is due at the time of registration, with the remaining balance due three weeks prior to departure. Because all travel expenses are prepaid, we cannot offer refunds for travel programs.



DAY TRIPS

Broadway Across America presents: **"MAMMA MIA!"** at the Historic Orpheum Theatre

Join us for a special day out in Omaha!! The Orpheum Theater is Omaha's "golden palace", a historic Midwestern landmark. We will enjoy lunch together at Spaghetti Works with some brief time for shopping in the Old Market area before the matinee performance of "MAMMA MIA!" This ultimate feel-good show has audiences coming back again and again to relive the thrill. This smash-hit musical combines ABBA's greatest hits, including "Dancing Queen," "S.O.S.," "Super Trouper," "Take A Chance on Me" and "The Winner Takes It All," with an enchanting tale of love, laughter and friendship. Transportation, lunch and theatre tickets are all included in the program fee.

DATE	April 25
DAY	Saturday
TIME	9am – 6:30pm
LOCATION	Omaha, NE
FEE	\$119
REGISTER BY	April 3
PROGRAM #	14406

Spring Mystery Trip

Jump on board the mystery bus for an adventurous day full of surprises!! You should come prepared for both indoor and outdoor activities since our destination will not be revealed. Please be sure to dress casual and comfortable. This trip will include your lunch, and any admissions to destinations we may visit!

DATE	May 12
DAY	Tuesday
TIME	7am – 6pm
FEE	\$72
REGISTER BY	April 21
PROGRAM #	14408

DAY TRIP INFORMATION

These trips generally fill quickly, so please register early. The date listed is a registration cut-off date and not a guarantee that seats will be available until the date listed. Space is limited to 52 people. All day trips are open to people 55 years old and over. All trips depart from the Southeast corner of the Valley West Mall parking lot.

Senior Craft Craze!

Are you looking to get out of house and get those creative juices flowing? If so, you may want to sign up for a Senior Craft Craze class. During each class you will leave with a finished or nearly finished item great for decorating or for gifts!

DATE	CRAFT	PROGRAM #
December 4	Holiday Gift Card Holder These gift card holders double as a cute holiday decoration! Made from old jeans pockets, they are sure to be the talk of any Holiday party!	14411
February 26	T-bag Make something old into something with a new use! These grocery bags are easy to make and provide an attractive alternative to “purchased” reusable grocery bags. Come and join the fun. Some old t-shirts will be provided, but you may bring your own if you are looking for a special look or color.	14412
March 26	Button Bracelets Do you like those “chunky” bracelets? Come to the Nature Lodge and make one of your own out of buttons! We will provide some buttons to use, but you are welcome to bring your own vintage buttons to make a one-of-a-kind creation.	14413
TIME	9:30 – 11am (Coffee will be served!)	
LOCATION	Raccoon River Park Nature Lodge	
FEE	\$7 per class	



4 WAYS TO REGISTER NOW!



Scan & Register with your mobile device.



- **On-Line:**

<https://reconline.wdm-ia.com>

- **Mail-In:**

P.O. Box 65320, WDM, IA 50265

- **Call-In:**

222-3444

- **Fax-In:**

222-3459

POLICIES

REFUND POLICY

Refunds will be gladly given for any reason as long as your request for a refund is submitted before the registration deadline date. Any time after that date, refunds will only be issued with a written medical excuse. *This policy does not apply to travel programs & adult sports leagues.*

CANCELLATION POLICY

We reserve the right to cancel a program or activity that does not meet the minimum number of participants necessary to offer the program.

REGISTRATION CHANGE FEE

A fee of \$5 will be charged for each Registration Change made after participants are enrolled in a program.

RECREATION PROGRAM ASSISTANCE

Fee discounts are available for WDM residents meeting guidelines for assistance. Applications will be available at **WDM Human Services, 318 5th Street.**

ACCOMMODATIONS

It is the responsibility of the individual with a disability requiring accommodations to inform the Parks and Recreation Department, at least 48 hours in advance. Please call **222-3444** to have accommodations provided.



First Name(s) (Parent or Guardian)

Last Name

Address

City, State, Zip

Home Phone

Alternate Phone Number

Visa, Mastercard, or Discover (Circle one)

e-mail Address

Card number

exp. date

\$5 / change fee for program changes made after your registration has been processed.

WDM Parks And Recreation Waiver And Release

In consideration of my own or my child's participation in the Parks and Recreation (hereinafter referred to as "P&R") program or activity through the City of West Des Moines, Iowa (hereinafter referred to as "City"), we hereby release the City, its officials, employees, representatives, and agents from any and all accidents, injuries, damages, or losses received by my child or by myself through the P&R program that have not been caused by negligence attributable to the City. I also agree and acknowledge that the City is not responsible for any intentional or reckless actions of the City's officials, employees, representatives, and agents since those actions are the sole conduct of the responsible individual(s). I further agree and acknowledge that this release of liability is full, complete, and comprehensive, and it covers all accidents, injuries, damages, or losses, known or unknown, and any and all costs related thereto arising out of or otherwise related to my child's participation or my own participation in programs or activities, and that this release is binding upon our heirs, successors, and assigns.

We certify that my child and or myself has received a proper physical examination within the past year and that we are physically able to participate in all P&R activities. We understand that it is our obligation to timely inform P&R of any restrictions or limitations regarding our physical abilities. We also understand that it is our obligation to follow all regulations and rules set forth by P&R in the performance of the activities. We hereby release, indemnify, and hold harmless the City, its officials, employees, representatives, and agents from any and all claims, settlements, and judgments, including all reasonable investigative fees, attorney's fees, and court costs for any injury, damage, or loss, which is due to or arises in whole or in part due to negligent, reckless, or intentional actions taken by my child or by myself.

Participant Name	Birthdate	Activity	Program #	Fee

Please make checks payable to the City of West Des Moines

MAIL to: WDM Parks and Recreation • P.O. Box 65320 • West Des Moines, IA 50265

DROP OFF this form with your payment at the Parks and Recreation Administration Office
4200 Mills Civic Parkway • West Des Moines, IA 50265



Scan with your mobile device to see our website

PRSR, STD
U.S. POSTAGE
PAID
Des Moines, IA
Permit No. 4839
ECRWSS



“Tips & Tactics for Rightsizing” Lunch and Learn



Attend an informative Lunch-n-Learn, sponsored by Deerfield Retirement Community. Enjoy a delicious lunch, and learn common sense information about rightsizing your home from the local company, Moving Matters. This company specializes in working with seniors to make their homes more accommodating. It’s spring cleaning time, the perfect time to open those windows and your mind to improvements to your home. Our lunch today will feature assorted sandwiches, pasta salad, soups, and dessert...including lemon cookies. Join us for our first “Lunch and Learn” series!

DAY	Thursday
DATE	March 12
TIME	11am – 1pm
AGE	Targeted toward ages 55+
LOCATION	Raccoon River Park Nature Lodge
FEE	\$12.50 per person
PROGRAM #	14419

