

# PARKS & TRAILS

West Des Moines maintains over 1200 acres of park land and open space. There are a total of 26 parks located throughout the city that range in size from 1 1/2 acre Kiwanis Park to 632 acre Raccoon River Park.

Looking for a **loop trail**? Try these:

- **Raccoon River Park Trail** - 3.2 m
- **City/School Campus Trail** - .52 m
- **Maple Grove Park Trail** - .52 m
- **Quail Cove Park Trail** - .46 m
- **Wild Rose Park Trail** - .40 m
- **Willow Springs Park Trail** - .38 m
- **Scenic Valley Park Trail** - .35 m
- **Peony Park Trail** - .35 m
- **Jaycee Park Trail** - .33 m

There are over 50 miles of trails in WDM with Jordan Creek Trail serving as the main spine of the trail system. Jordan Creek Trail is 6.75 miles long and connects Raccoon River Park in the east to Valley View Park in the west.

# FACILITY RENTALS

Make your next party or family event memorable by having it in one of West Des Moines' beautiful parks or special-use facilities. Contact the Parks & Recreation Department at **222-3444** for more information.

Available **rental facilities** include:

- **Brookview Park**
- **Legion Park**
- **Fairmeadows Park**
- **Crossroads Park**
- **Pearson Park**
- **Raccoon River Park**
- **Nature Lodge**
- **VJ Activity Center**



# RECREATION PROGRAMS

The Parks & Recreation Department offers a wide variety of recreation programs for people of all ages.

Recreation Programs include:

- **Special Events**
- **Family Activities**
- **Youth Programs**
- **Adult Programs**
- **Senior Citizen Programs**
- **Travel Programs**



To view a full listing of programs offered, pick up the WDM Program Guide at the Parks & Recreation office or visit [www.wdm.iowa.gov/parkrecreg](http://www.wdm.iowa.gov/parkrecreg).

# 2017 WDM Parks & Recreation PARKS & TRAILS GUIDE



## Contact Information

- Park/Trail Emergency.....911
- Shelter Reservations.....(515) 222-3444
- Nature Lodge.....(515) 222-3424
- Valley Junction Activity Center.....(515) 222-3440
- Aquatic Centers.....(515) 273-0700

West Des Moines Parks and Recreation

P.O. Box 65320

West Des Moines, IA 50265

515-222-3444

[parkrec@wdm.iowa.gov](mailto:parkrec@wdm.iowa.gov)

[www.wdm.iowa.gov](http://www.wdm.iowa.gov)



# PARK AMENITIES

			SHELTER	PICNIC TABLES	PLAY EQUIPMENT	SOCCER / PLAYFIELD	RESTROOM BUILDING	PARKING LOT	GRILL	BASKETBALL COURT	BACKSTOP	TENNIS COURT	MULTI-USE TRAILS	SAND VOLLEYBALL	OTHER AMENITIES
<b>AMERICAN LEGION PARK</b> 301 Vine Street	D23	\$	●	●	●	●	●	●	●	●	●	●	●	●	shuffleboard and horseshoe courts, skate ramp, skinned infield, sprayground
<b>ASHAWA PARK</b> 4431 Waterford Drive	F17		●	●	●	●	●	●	●	●	●	●	●	●	Ashawa Greenway Trail connection
<b>*BROOKVIEW PARK</b> 400 81st Street	E11	\$	●	●	●	●	●	●	●	●	●	●	●	●	Jordan Creek Trail connection
<b>*CROSSROADS PARK</b> 5205 Ashworth Road	C15	\$	●	●	●	●	●	●	●	●	●	●	●	●	6-court tennis facility, skate park, skinned infield
<b>FAIRMEADOWS PARK</b> 543 22nd Street	E20	\$	●	●	●	●	●	●	●	●	●	●	●	●	new playground coming in 2017!
<b>FLORER PARK</b> 1410 Locust Street	E21		●	●	●	●	●	●	●	●	●	●	●	●	16-court horseshoe facility
<b>HOLIDAY PARK</b> 1701 Railroad Avenue	E21		●	●	●	●	●	●	●	●	●	●	●	●	baseball and softball complex, aquatic center
<b>HUSTON RIDGE PARK</b> 8455 Coachlight Drive	G10		●	●	●	●	●	●	●	●	●	●	●	●	new basketball court in 2014
<b>JAYCEE PARK</b> 5608 Center Street	C14		●	●	●	●	●	●	●	●	●	●	●	●	Pickleball striped court, sand-volleyball court, .33 mile loop trail
<b>JORDAN CREEK PARK</b> 310 50th Street	E16		●	●	●	●	●	●	●	●	●	●	●	●	Jordan Creek Trail connection, portable restroom
<b>KIWANIS PARK</b> 3101 Maple Street	E19		●	●	●	●	●	●	1/2	●	●	●	●	●	gazebo shelter, half-court, portable restroom
<b>KNOLLS PARK</b> 5150 Aspen Drive	D16		●	●	●	●	●	●	●	●	●	●	●	●	Knolls Greenway Trail connection, portable restroom
<b>*MAPLE GROVE PARK</b> 9350 Chalk Street	C8		●	●	●	●	●	●	●	●	●	●	●	●	.52 mile loop trail
<b>MEADOWVIEW PARK</b> 638 Prairie View Drive	D15		●	●	●	●	●	●	●	●	●	●	●	●	WDM Rotary Club garden
<b>PEARSON PARK</b> 1256 19th Street	B21	\$	●	●	●	●	●	●	●	●	●	●	●	●	wood pedestrian bridge, mature trees, open field
<b>PEONY PARK</b> 1100 63rd Street	C13		●	●	●	●	●	●	●	●	●	●	●	●	.35 mile loop trail, new tennis court in 2014
<b>QUAIL COVE PARK</b> 1515 S.52nd Street	I16		●	●	●	●	●	●	●	●	●	●	●	●	.46 mile nature trail (unpaved)
<b>RACCOON RIVER PARK</b> 2500 Grand Avenue	I21	\$	●	●	●	●	●	●	●	●	●	●	●	●	dog park, nature lodge, boat ramp, beach, archery facility
<b>RAILROAD PARK</b> 425 Railroad Avenue	F23		●	●	●	●	●	●	●	●	●	●	●	●	restored train caboose, portable restrooms
<b>SCENIC VALLEY PARK</b> 1223 S.24th Court	I19		●	●	●	●	●	●	●	●	●	●	●	●	.35 mile loop trail
<b>SOUTHWOODS PARK</b> 350 S.35th Street	F18		●	●	●	●	●	●	●	●	●	●	●	●	9-hole disc golf course, nature trails, 40 acre natural preserve
<b>VALLEY VIEW PARK</b> 255 81st Street	F10		●	●	●	●	●	●	●	●	●	●	●	●	practice fields, aquatic center, new lighted basketball courts in 2016
<b>*WESTERN HILLS PARK</b> 4115 Walnut Street	E17		●	●	●	●	●	●	●	●	●	●	●	●	playground shared with adjacent elementary school
<b>WILD ROSE PARK</b> 6801 Cody Drive	D12		●	●	●	●	●	●	●	●	●	●	●	●	.40 mile loop trail
<b>WILLOW SPRINGS PARK</b> 5685 Wistful Vista Drive	F14		●	●	●	●	●	●	●	●	●	●	●	●	Westridge Greenway Trail connection, .38 mile loop trail
<b>WILSON PARK</b> 298 9th Street	E22		●	●	●	●	●	●	●	●	●	●	●	●	trail connection to Holiday Park
<b>*WOODLAND HILLS PARK</b> 1230 S.95th Street	I8		●	●	●	●	●	●	●	●	●	●	●	●	new park coming in 2017!

\*no alcohol allowed F8 map location \$ rentable park shelter ● 2-5 & 5-12 year old playground ● lighted court updated 01/20/17



# PARKS & TRAILS MAP

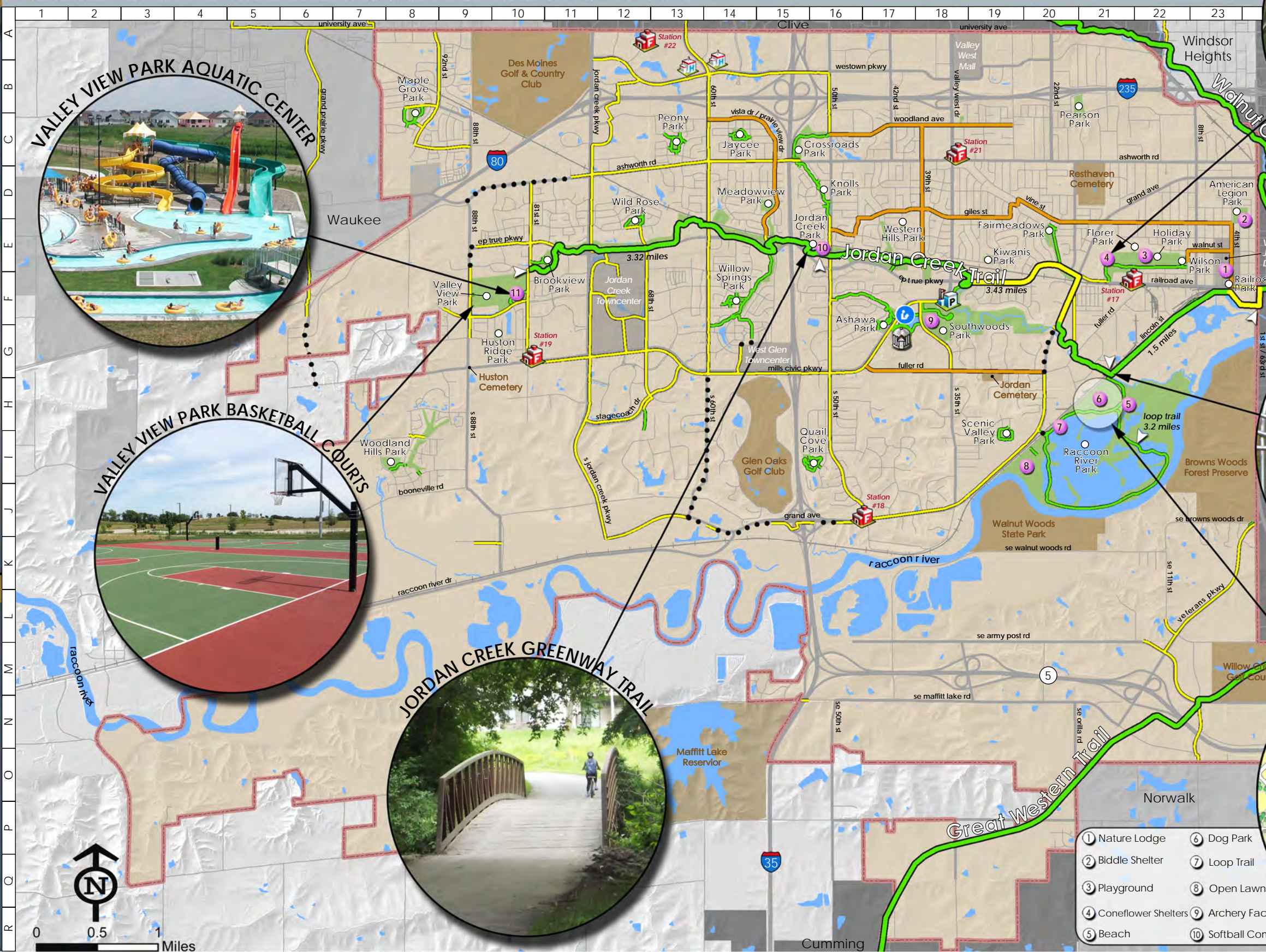
WEST DES MOINES PARKS & RECREATION

**Legend**

- Sidepath Trail
- Greenway / Park Trail
- Regional Trail
- On-Street Bike Facility
- Planned Trail
- Park Facility
- Fire Station
- Police Station
- Hospital
- City Hall
- Library
- Trail Distance Marker
- City Boundary

**Recreation Facilities**

1. Valley Junction Activity Center
2. American Legion Park Sprayground
3. Holiday Park Baseball / Softball Complex
4. Holiday Park Aquatic Center
5. RRP Archery Facility
6. RRP Softball Complex
7. RRP Fishing Pier
8. RRP Soccer Complex
9. Southwoods Disc Golf
10. Community Gardens
11. Valley View Park Aquatic Center



- |                       |                    |
|-----------------------|--------------------|
| ① Nature Lodge        | ⑥ Dog Park         |
| ② Biddle Shelter      | ⑦ Loop Trail       |
| ③ Playground          | ⑧ Open Lawn        |
| ④ Coneflower Shelters | ⑨ Archery Facility |
| ⑤ Beach               | ⑩ Softball Complex |



0 0.5 1 Miles