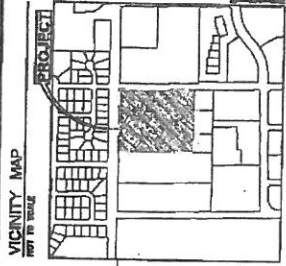


CLOCKTOWER SQUARE  
PUD SKETCH



CIVIL DESIGN ADVANTAGE, PIA JT  
1287 CES MOBILE, IOWA  
3405 S.E. CROSSROADS DRIVE, SUITE 0  
OFFICE: (515) 283-4410  
PHONE: (515) 283-4410 FAX: (515) 283-4410  
LAF: NLM



VICINITY MAP  
NOT TO SCALE

**OWNER/APPLICANT**  
CLOCKTOWER SQUARE BUILDING, LLC  
3405 S.E. CROSSROADS DRIVE, SUITE 0  
OFFICE: (515) 283-4410  
PHONE: (515) 283-4410 FAX: (515) 283-4410  
LAF: NLM

**ENGINEER**  
CIVIL DESIGN ADVANTAGE, PIA JT  
1287 CES MOBILE, IOWA  
OFFICE: (515) 283-4410  
PHONE: (515) 283-4410 FAX: (515) 283-4410  
LAF: NLM

**SURVEYOR**  
CIVIL DESIGN ADVANTAGE, PIA JT  
1287 CES MOBILE, IOWA  
OFFICE: (515) 283-4410  
PHONE: (515) 283-4410 FAX: (515) 283-4410  
LAF: NLM

**ARCHITECT**  
MAYNARD & ASSOCIATED ARCHITECTS  
2100 UNIVERSITY AVE.  
SUITE 200  
DES MOINES, IA 50319  
PHONE: (515) 281-1117  
FAX: (515) 281-1118

**LEGAL DESCRIPTION**  
PLAT 117 OF 120, CITY OF DES MOINES, IOWA.  
SECTION 11, T43N, R10W, S12E, 117  
ACRES, MORE OR LESS.

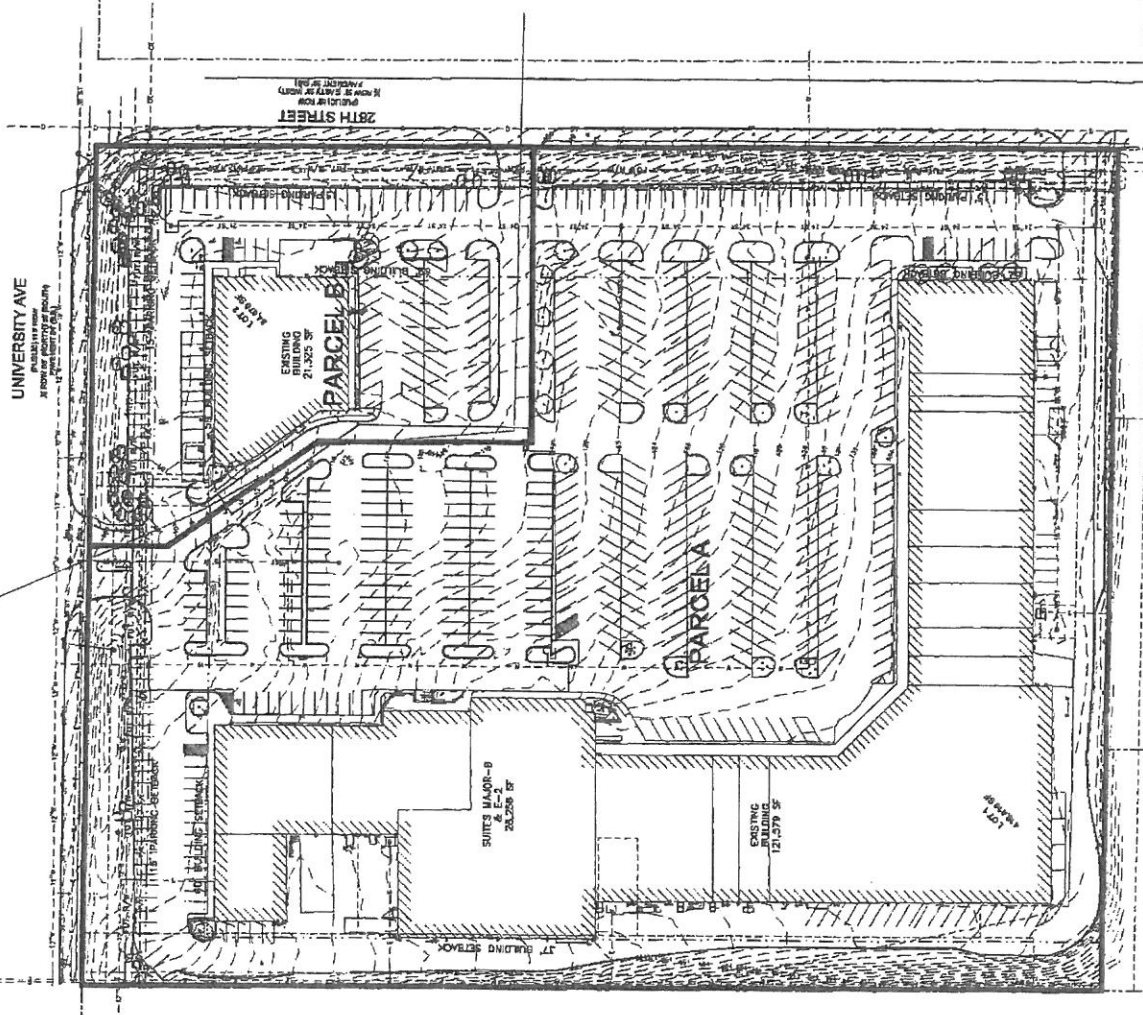
**ZONING**  
M-1 - RESIDENTIAL MEDIUM DENSITY

**PROJECT SITE ADDRESS**  
2815 UNIVERSITY AVE.  
DES MOINES, IOWA 50319

**EXISTING/PROPOSED USE**  
EXISTING: OFFICE  
PROPOSED: OFFICE

**OPEN SPACE**  
TOTAL: 14,000 SF  
TOTAL: 14,000 SF

- ADDED BY FUTURE
- DELETED BY FUTURE
- ADDED BY FUTURE
- DELETED BY FUTURE
- ADDED BY FUTURE
- DELETED BY FUTURE
- ADDED BY FUTURE
- DELETED BY FUTURE
- ADDED BY FUTURE
- DELETED BY FUTURE



UNIVERSITY AVE  
PARALLEL TO STREET  
28TH STREET

