



ENVIRONMENTAL ASSESSMENT PUBLIC HEARING

Grand Technology Gateway – Grand Prairie Parkway from Mills Civic Parkway to Raccoon River Drive and Grand Avenue from Grand Avenue (1,200 feet west of 88th Street) to Grand Prairie Parkway

HDP-8260(629)--71-25

MEETING DATE: AUGUST 1, 2017, 5-7 PM

MEETING LOCATION: CITY COUNCIL CHAMBERS, 4200 MILLS CIVIC PARKWAY, WEST DES MOINES, IOWA

At the proposed intersection of Grand Prairie Parkway and Mills Civic Parkway

Project Description

The City of West Des Moines, in coordination with the Iowa Department of Transportation (Iowa DOT) and the Federal Highway Administration (FHWA), are proposing to construct a 1.25-mile extension of Grand Avenue and a 2.0-mile extension of Grand Prairie Parkway. The proposed Grand Avenue extension would connect the current western terminus of Grand Avenue, located approximately 1,200-feet west of South 88th Street, on the east with the proposed extension of Grand Prairie Parkway on the west. The proposed Grand Prairie Parkway extension would connect to Mills Civic Parkway on the north and Raccoon River Drive on the south. Both proposed extensions would be arterial roadways providing controlled access to future side roads spaced at approximately one quarter mile along the roadway corridors. The proposed extensions connect Grand Prairie Parkway south to the Des Moines River crossing project that is being constructed as an independent project.

Public Comments

The City of West Des Moines is soliciting comments on the Environmental Assessment in multiple ways including:

- Email Brian Hemesath at Brian.Hemesath@wdm.iowa.gov
- Returning the comment form at the hearing or by mail to Brian Hemesath at Engineering Services, City Hall, P.O. Box 65320, West Des Moines, IA 50265

Comments are due by August 16, 2017, to be included in the public hearing record.

PURPOSE AND NEED

The purpose of the project:

- To extend Grand Prairie Parkway and Grand Avenue to improve local system linkage
- Support planned economic development

Need for Action:

- No efficient way to navigate from Mills Civic Parkway at Sugar Creek south to Booneville Road or Raccoon River Drive.
- Existing roadway network in and around the project study area consists of gravel roads and does not provide adequate access and mobility to the interstates or major arterial roadways.
- A compatible network of roads is required for ongoing and planned growth.

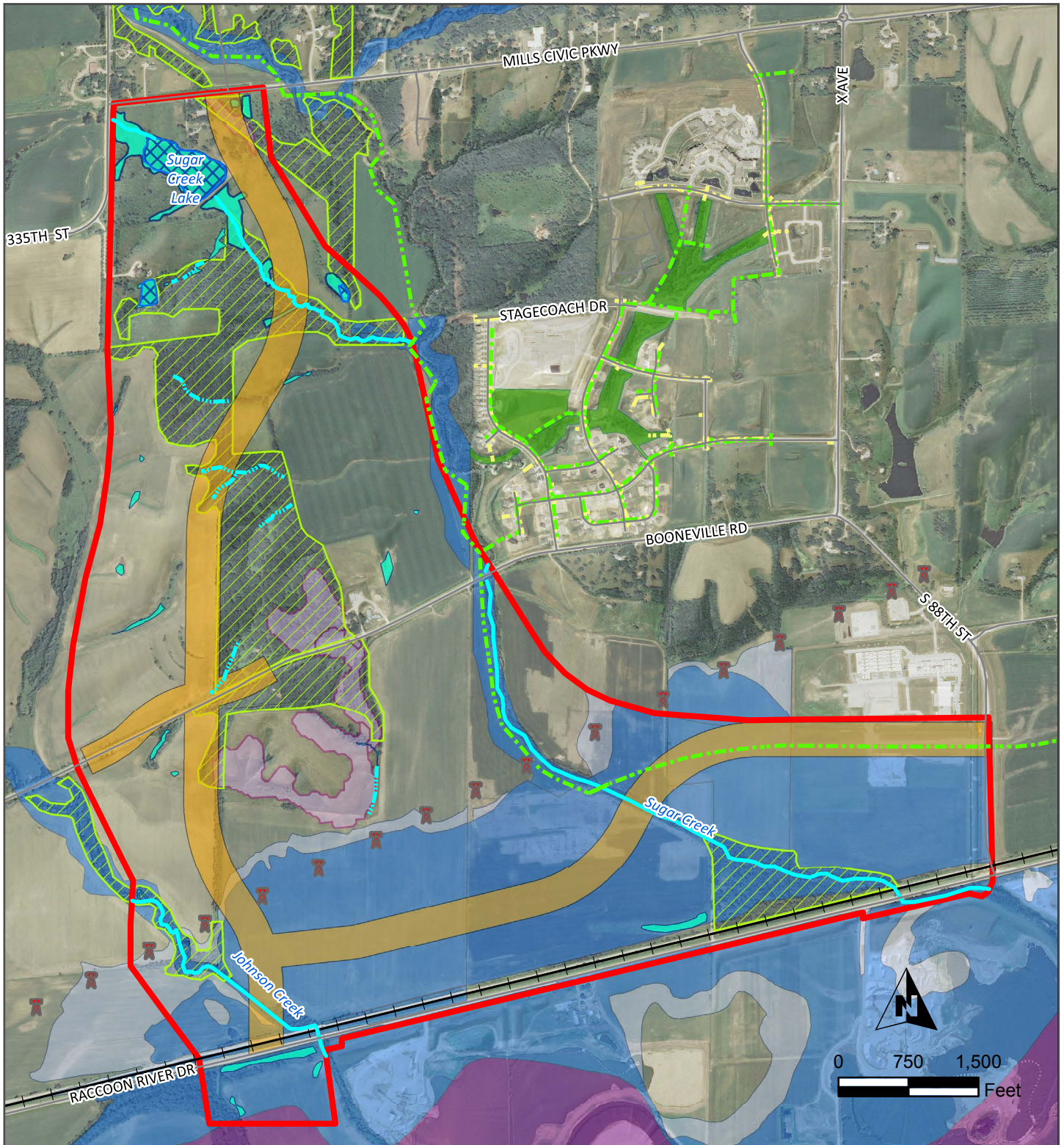
For More Information

Brian Hemesath, P.E.

City of West Des Moines – Interim City Engineer
Engineering Services City Hall
4200 Mills Civic Parkway, 2E
West Des Moines, IA 50265
(515) 222-3475

Brian.Hemesath@wdm.iowa.gov

Locally Preferred Alternative



Grand Technology Gateway Environmental Assessment

West Des Moines, Iowa

