

Welcome to the October 26, 2020 West Des Moines Plan and Zoning Commission Meeting

Here are a few housekeeping items before we get started:

- You will be muted by default when joining the meeting. The Commission Chair will first ask for the applicant's and then staff's presentation on an agenda item. After the applicant and staff have presented, the Commission Chair will ask for public comment. At this point, please raise your hand to indicate you wish to speak. The Chair will then call on you and you will be unmuted.



Raise Hand:

Location - Click participants in your Zoom toolbar, you will see a box pop up with this at the bottom of the participants window:



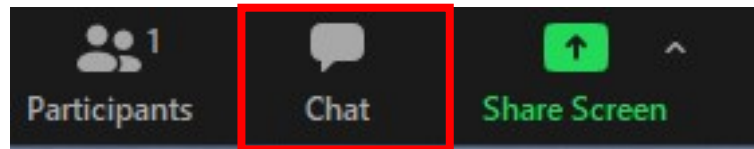
If you are participating by phone, dial *9 to raise or lower your hand, dial *6 to unmute or mute

- When the meeting is in session, please write in the chat window (click the speech bubble icon in the bottom bar) and let us know if you can't see or hear something or you are having other issues



Chat:

Location - Click on the speech bubble in your Zoom toolbar



- If you have the meeting display on Full Screen, the Participants or Chat window may be hidden. Chose "Exit Full Screen" at the top right corner and the meeting display will shrink and you will have room to show these windows off to the side of the main display.

Item 2a – Glen Oaks Parcel L – Recommend Approval of an Amendment to the PUD Ordinance to Remove a Portion of the Parcel and Assign Land Use and Zoning Designations to the Property

To participate on this item:

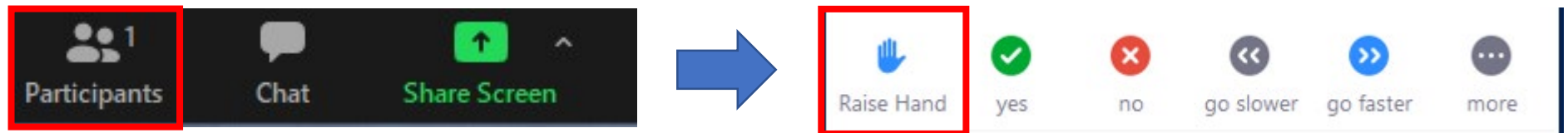
- The Commission Chair will first have the applicant and staff present on the agenda item.
- The Commission Chair will then ask for public comment on the item.
- Please raise your hand to indicate that you wish to speak.
- The Chair will then call on you and you will be unmuted.

When you are unmuted – please state your name and address for the record before you make your comments.

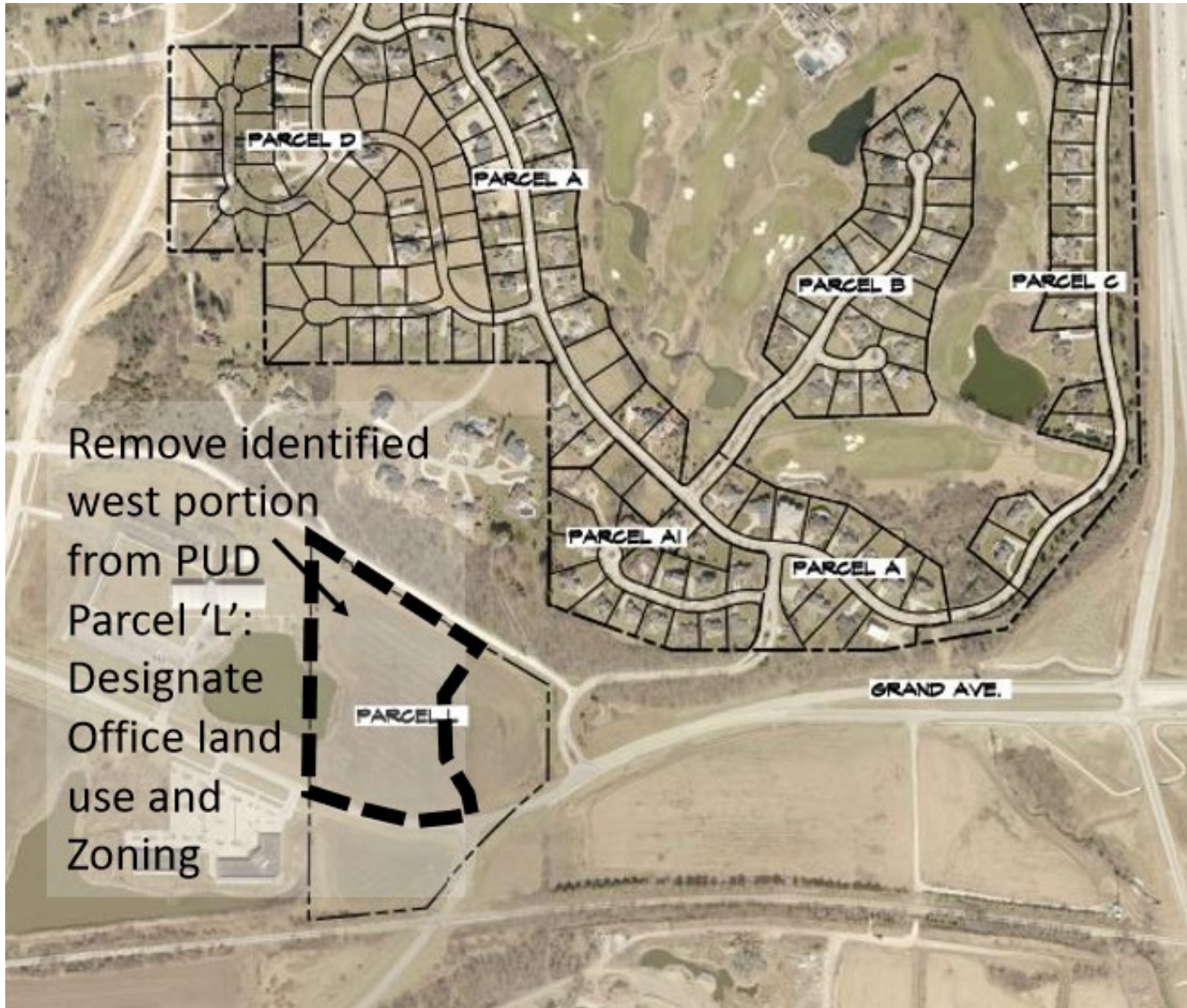


Raise Hand:

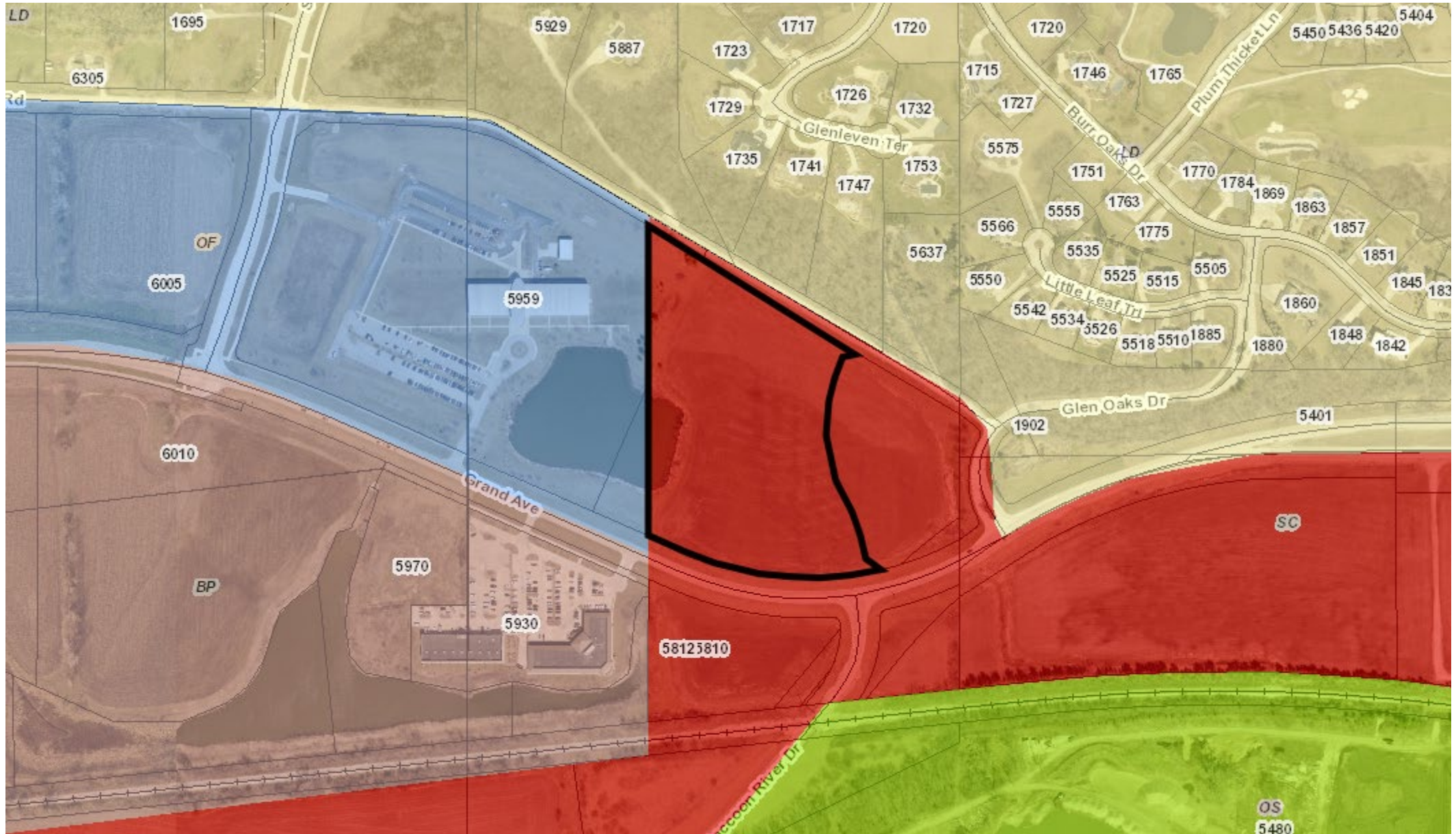
Location - Click participants in your Zoom toolbar, you will see a box pop up with this at the bottom of the participants box:



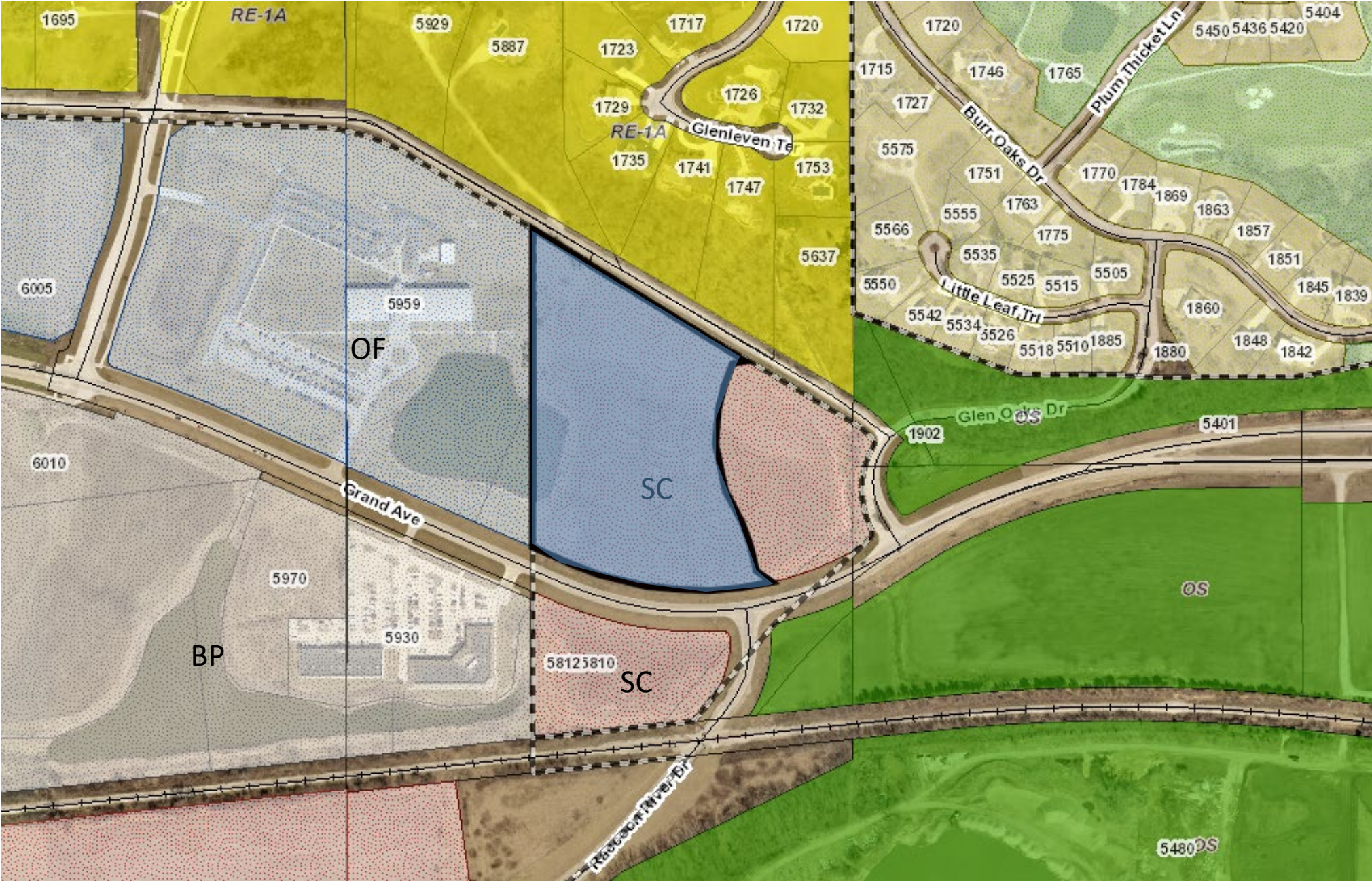
- If you are participating by phone, dial *9 to raise or lower your hand, dial *6 to unmute or mute
- Please note, it is entirely at the Chair's discretion to limit the length of time that individuals may speak, as well as whether to allow individuals to speak a second time.
- When a motion is made and a vote is called for, ONLY the Commission members vote.



Existing Comprehensive Plan Land Use



Existing Zoning Map



GLEN OAKS PUD PUD SKETCH



GRAPHIC SCALE

400 0 200 400 800

Item 2b – Glen Oaks Parcels K and K1 – Recommend Approval of an Amendment to the PUD Ordinance to Remove a Portion of the Parcels and Assign Zoning Designations to the Property

To participate on this item:

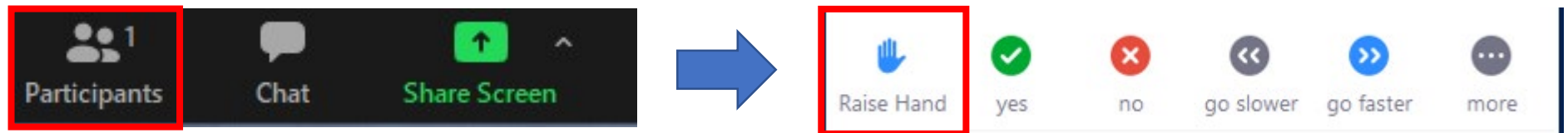
- The Commission Chair will first have the applicant and staff present on the agenda item.
- The Commission Chair will then ask for public comment on the item.
- Please raise your hand to indicate that you wish to speak.
- The Chair will then call on you and you will be unmuted.

When you are unmuted – please state your name and address for the record before you make your comments.



Raise Hand:

Location - Click participants in your Zoom toolbar, you will see a box pop up with this at the bottom of the participants box:



- If you are participating by phone, dial *9 to raise or lower your hand, dial *6 to unmute or mute
- Please note, it is entirely at the Chair's discretion to limit the length of time that individuals may speak, as well as whether to allow individuals to speak a second time.
- When a motion is made and a vote is called for, ONLY the Commission members vote.

Item 4a – Apex Dental – Recommend Approval of a Site Plan

To participate on this item:

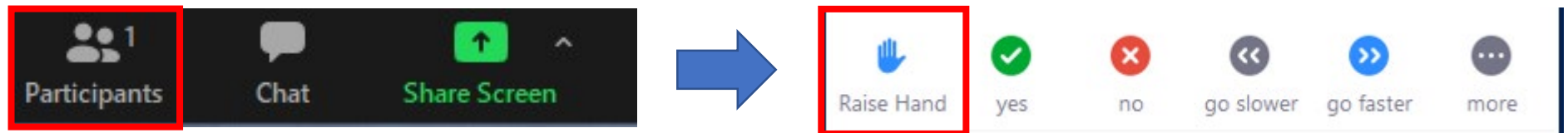
- The Commission Chair will first have the applicant and staff present on the agenda item.
- The Commission Chair will then ask for public comment on the item.
- Please raise your hand to indicate that you wish to speak.
- The Chair will then call on you and you will be unmuted.

When you are unmuted – please state your name and address for the record before you make your comments.



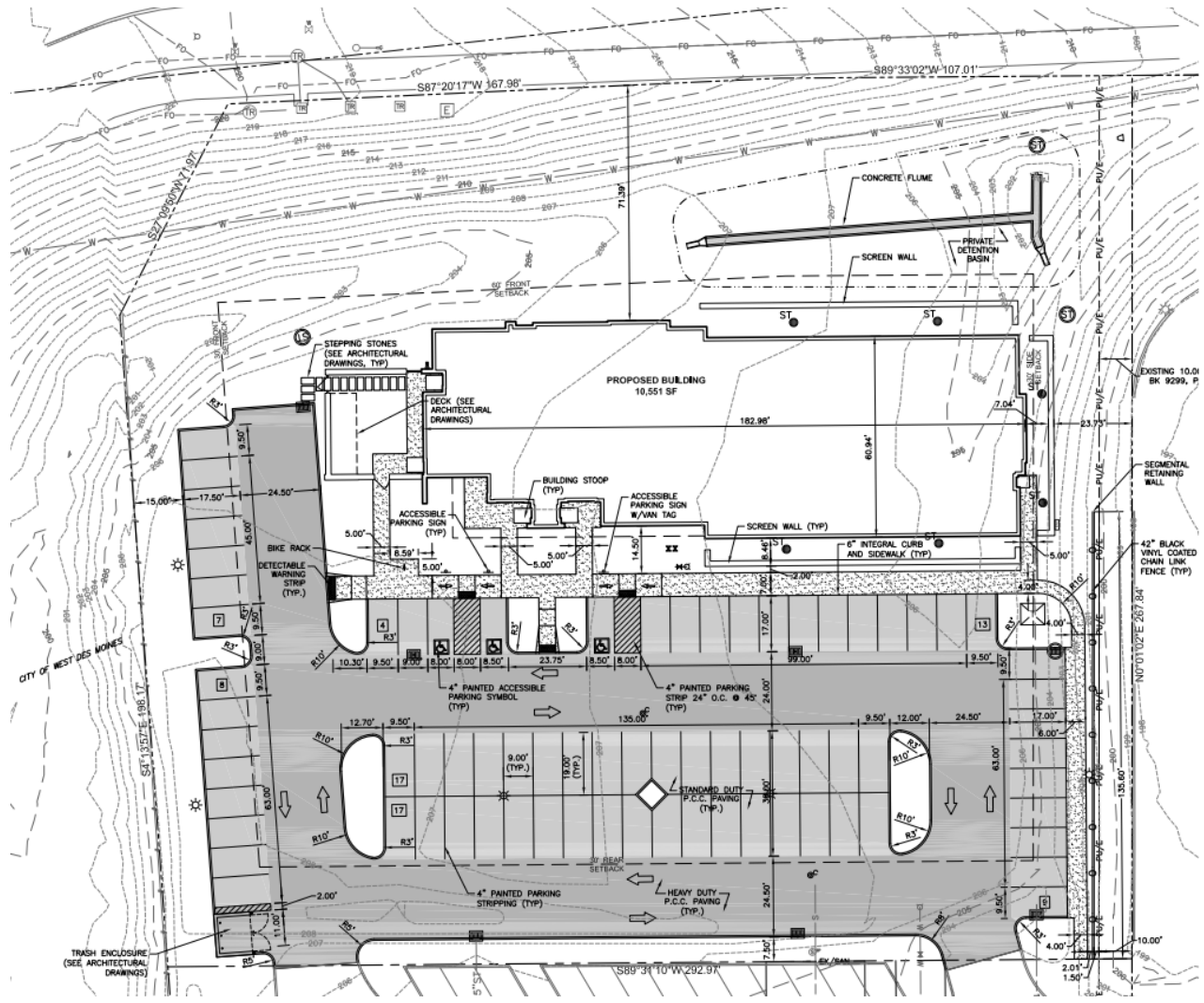
Raise Hand:

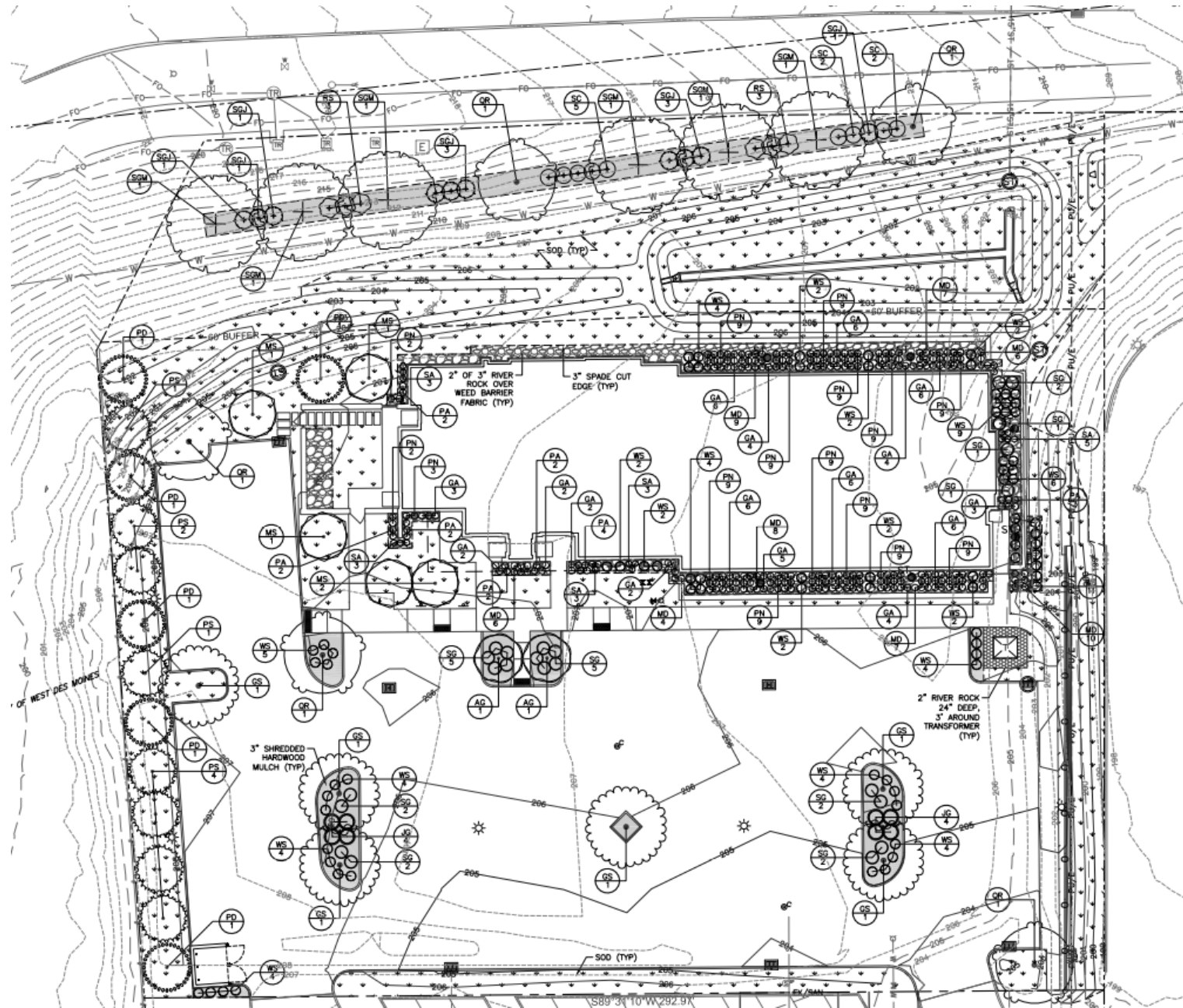
Location - Click participants in your Zoom toolbar, you will see a box pop up with this at the bottom of the participants box:



- If you are participating by phone, dial *9 to raise or lower your hand, dial *6 to unmute or mute
- Please note, it is entirely at the Chair's discretion to limit the length of time that individuals may speak, as well as whether to allow individuals to speak a second time.
- When a motion is made and a vote is called for, ONLY the Commission members vote.









4 | Material Breakdown - North
00' x 00'



2 | Material Breakdown - East
00' x 00'



3 | Material Breakdown - West
00' x 00'



Item 4b – Banks Landing – Recommend Approval of a Preliminary Plat

To participate on this item:

- The Commission Chair will first have the applicant and staff present on the agenda item.
- The Commission Chair will then ask for public comment on the item.
- Please raise your hand to indicate that you wish to speak.
- The Chair will then call on you and you will be unmuted.

When you are unmuted – please state your name and address for the record before you make your comments.

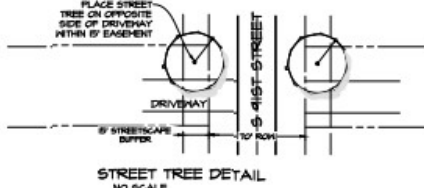
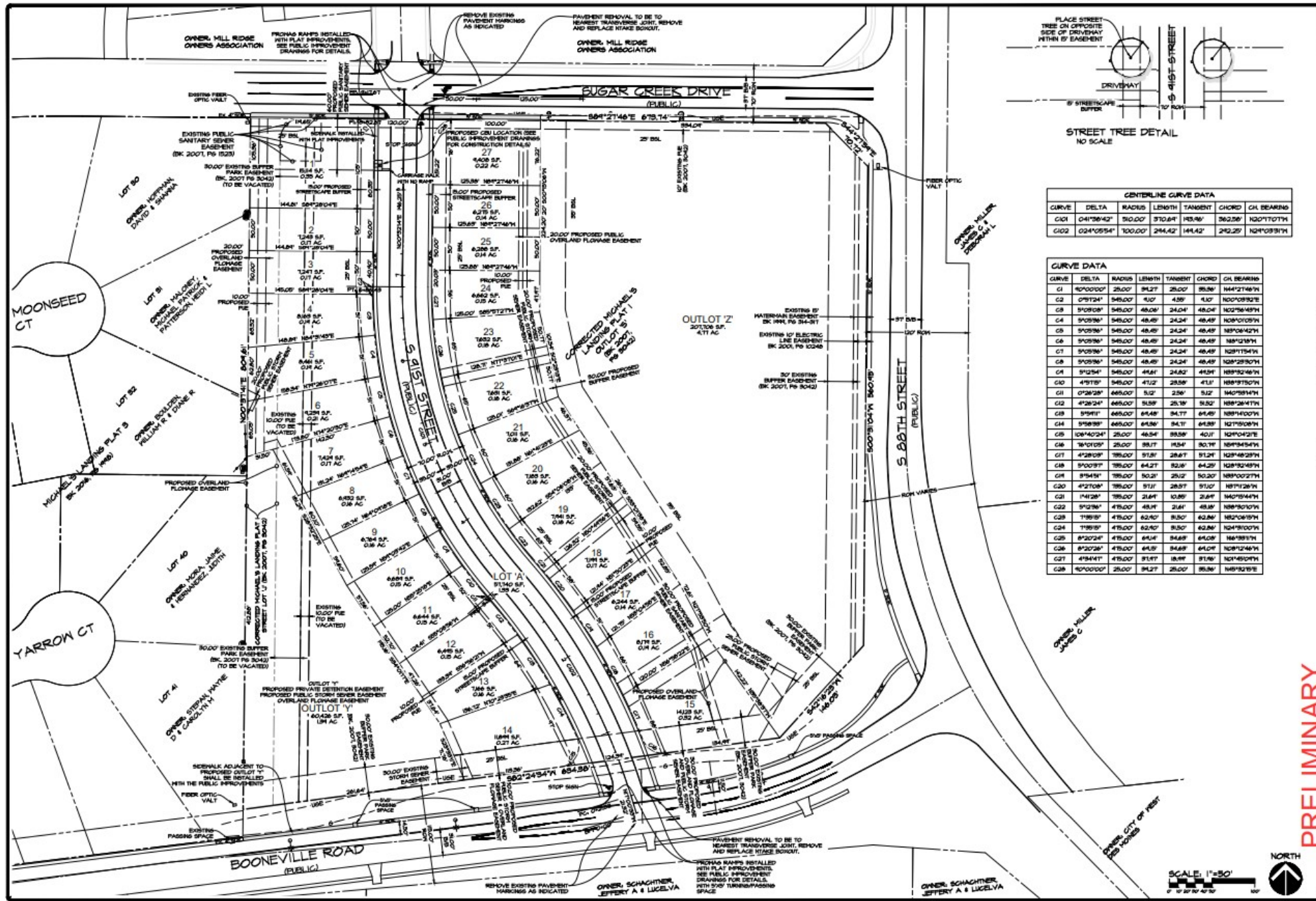


Raise Hand:

Location - Click participants in your Zoom toolbar, you will see a box pop up with this at the bottom of the participants box:



- If you are participating by phone, dial *9 to raise or lower your hand, dial *6 to unmute or mute
- Please note, it is entirely at the Chair's discretion to limit the length of time that individuals may speak, as well as whether to allow individuals to speak a second time.
- When a motion is made and a vote is called for, ONLY the Commission members vote.



CENTERLINE CURVE DATA

CURVE	DELTA	RADIUS	LENGTH	TANGENT	CHORD	CH. BEARING
C101	041°28'42"	510.00'	370.64'	143.56'	362.58'	N00°17'07"W
C102	024°09'54"	100.00'	24.42'	14.42'	24.22'	N24°09'54"W

CURVE DATA

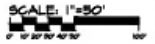
CURVE	DELTA	RADIUS	LENGTH	TANGENT	CHORD	CH. BEARING
C1	90°00'00"	25.00'	94.27'	25.00'	93.96'	N44°21'46"W
C2	0°51'24"	549.00'	4.07'	4.39'	4.37'	N00°09'52"E
C3	91°09'08"	549.00'	48.00'	24.04'	48.04'	S02°56'49"W
C4	91°09'36"	549.00'	48.49'	24.24'	48.49'	N08°01'09"W
C5	91°09'36"	549.00'	48.49'	24.24'	48.49'	N89°04'42"W
C6	91°09'36"	549.00'	48.49'	24.24'	48.49'	N89°04'18"W
C7	91°09'36"	549.00'	48.49'	24.24'	48.49'	N28°11'54"W
C8	91°09'36"	549.00'	48.49'	24.24'	48.49'	N28°12'30"W
C9	91°24'54"	549.00'	49.61'	24.82'	49.61'	N88°52'46"W
C10	4°51'58"	549.00'	47.12'	23.59'	47.11'	N88°51'50"W
C11	0°28'28"	669.00'	5.12'	2.56'	5.12'	N40°58'14"W
C12	4°28'24"	669.00'	51.59'	25.79'	51.20'	N88°28'47"W
C13	91°59'11"	669.00'	64.48'	34.17'	64.48'	N88°14'00"W
C14	91°58'39"	669.00'	64.96'	34.11'	64.96'	N27°50'38"W
C15	108°40'24"	25.00'	48.94'	24.59'	48.94'	N27°42'27"E
C16	91°01'09"	25.00'	39.17'	19.54'	39.17'	N89°54'54"W
C17	4°28'09"	795.00'	57.81'	28.87'	57.21'	N28°48'29"W
C18	91°00'37"	795.00'	64.27'	32.61'	64.25'	N28°48'49"W
C19	91°54'54"	795.00'	50.21'	25.12'	50.20'	N88°00'27"W
C20	4°27'08"	795.00'	57.11'	28.57'	57.07'	N87°12'29"W
C21	1°41'28"	795.00'	21.64'	10.82'	21.61'	N40°59'44"W
C22	91°29'36"	475.00'	48.71'	24.36'	48.68'	N88°50'09"W
C23	1°59'58"	475.00'	62.70'	31.35'	62.66'	N27°04'59"W
C24	1°59'58"	475.00'	62.70'	31.35'	62.66'	N24°50'00"W
C25	81°20'24"	475.00'	64.19'	34.69'	64.08'	N48°58'18"W
C26	81°20'24"	475.00'	64.19'	34.69'	64.08'	N48°12'46"W
C27	4°58'44"	475.00'	51.97'	25.99'	51.96'	N21°45'07"W
C28	91°00'00"	25.00'	94.27'	25.00'	93.96'	N44°21'46"W

PRELIMINARY
 BANKS LANDING FLAT 1
 WEST DES MOINES, IOWA
 GEOMETRIC PLAN

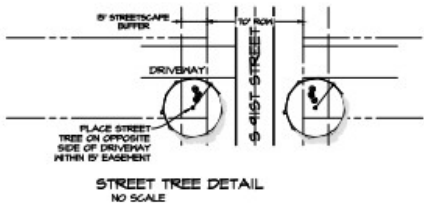
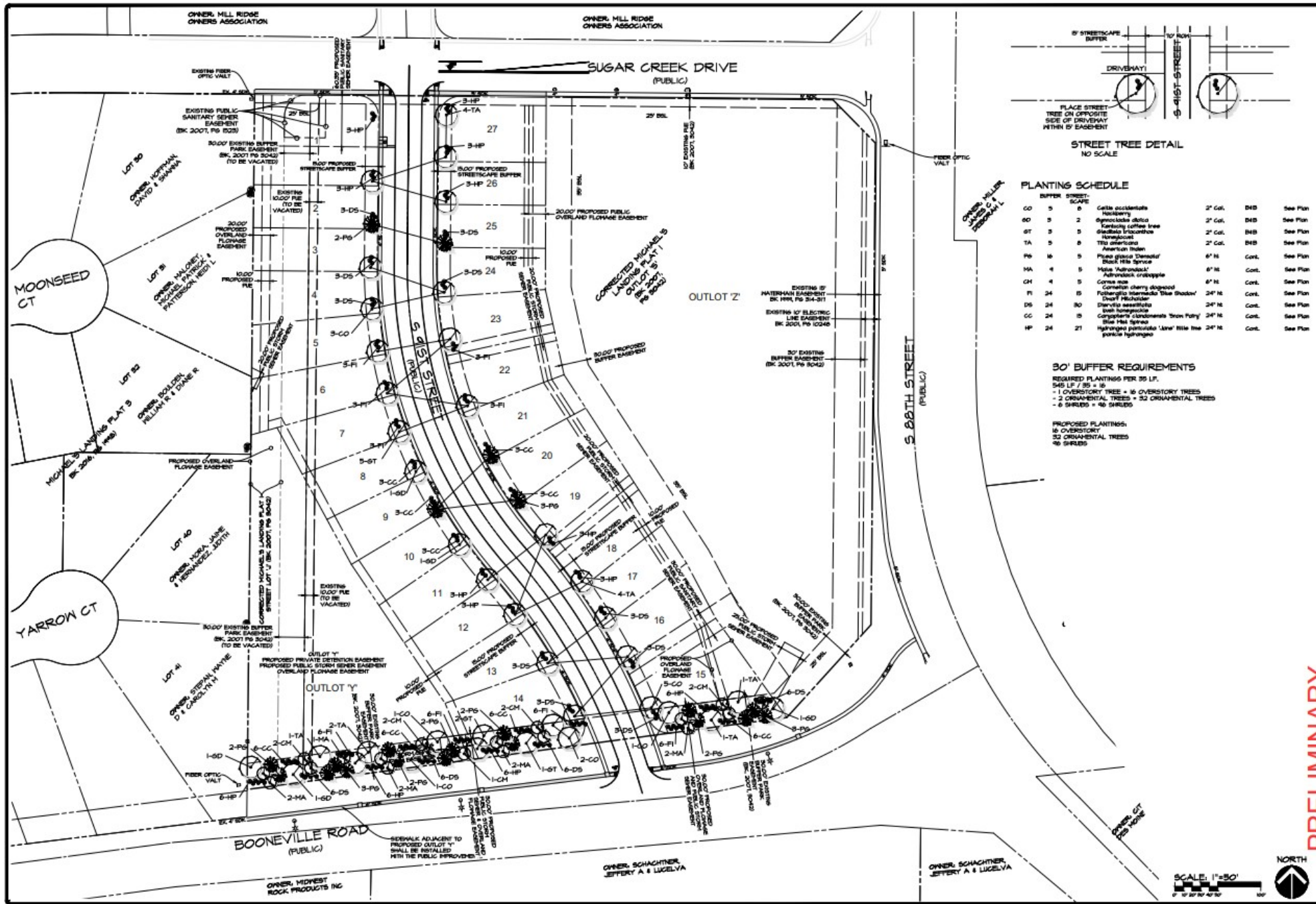
Civil Engineering Consultants, Inc.
 2400 86th Street - Unit 12 - Des Moines, Iowa 50322
 515.276.4884 - mail@cec-inc.com



DATE: 2020-10-28 - 5TH SUBMITTAL
 2020-10-21 - 4TH SUBMITTAL
 2020-09-10 - 3RD SUBMITTAL
 DATE OF SURVEY: MAR. 19, 2020
 DRAWN BY: DVA
 CHECKED BY: JAV



SHEET
 01
 OF
 3
 A-2094



PLANTING SCHEDULE

CODE	QUANTITY	PLANT SPECIES	SIZE	CONT.	SEE PLAN
CO	5	Celtis occidentalis	2" Cal.	D4B	See Plan
CO	5	Opuntia stricta	2" Cal.	D4B	See Plan
OT	5	Kentucky coffee tree	2" Cal.	D4B	See Plan
TA	5	Thuja americana	2" Cal.	D4B	See Plan
PA	16	Phaseolus coccineus	6" N	Cont.	See Plan
MA	4	Malva 'Admiral'	6" N	Cont.	See Plan
CH	4	Cornus sp.	6" N	Cont.	See Plan
PI	24	Prinosyris incarnata 'Blue Shadow'	24" N	Cont.	See Plan
DS	24	Dwarf Nandina	24" N	Cont.	See Plan
CC	24	Comarostaphylis 'Iron Fairy'	24" N	Cont.	See Plan
HP	24	Hydrangea paniculata 'Lava'	24" N	Cont.	See Plan

30' BUFFER REQUIREMENTS
 REQUIRED PLANTINGS PER 35 LF.
 545 LF / 35 = 16
 - 1 OVERSTORY TREE + 16 OVERSTORY TREES
 - 2 ORNAMENTAL TREES = 32 ORNAMENTAL TREES
 - 6 SHRUBS = 48 SHRUBS

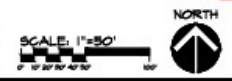
PROPOSED PLANTINGS:
 16 OVERSTORY
 32 ORNAMENTAL TREES
 48 SHRUBS

Civil Engineering Consultants, Inc.
 2400 86th Street - Unit 12 - Des Moines, Iowa 50322
 515.276.4884 - mail@cec-inc.com



DATE	BY	DESCRIPTION
2020-10-31	JH	5th SUBMITTAL
2020-09-25	JH	2ND SUBMITTAL
2020-09-10	JH	1st SUBMITTAL
DATE OF SURVEY	MAK. U.S. 2020	BY: JH
DESIGNED BY:	JH	
DRAWN BY:	JH	

PRELIMINARY
 BANKS LANDING FLAT I
 WEST DES MOINES, IOWA
 LANDSCAPING PLAN



SHEET 9 OF 9
 A-2024