


Welcome to the October 25, 2021, WDM Plan and Zoning Commission Meeting

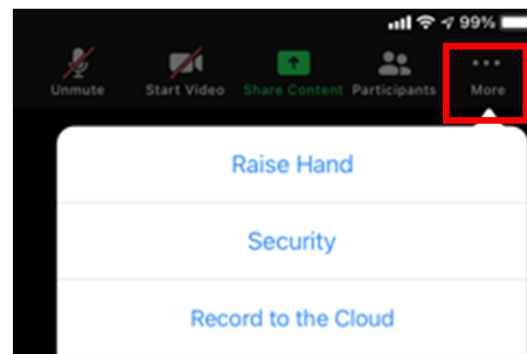
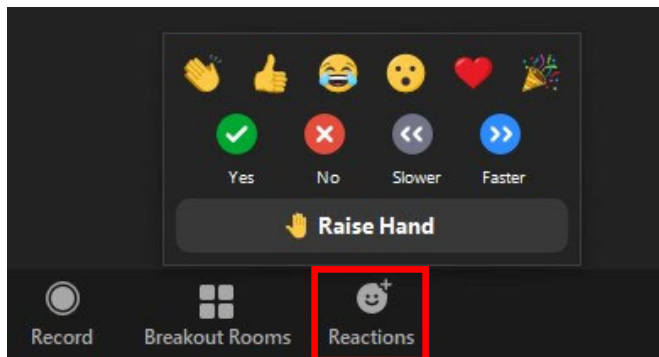
Here are a few housekeeping items before we get started:

- You will be muted by default when joining the meeting. The Commission Chair will first ask for the applicant's and then staff's presentation on an agenda item. After the applicant and staff have presented, the Chair will ask for public comment. At this point, please raise your hand to indicate you wish to speak. The Chair will then call on you and you will be unmuted.
- **If you are participating by phone, dial *9 to raise or lower your hand, dial *6 to unmute or mute**

 Raise Hand:
Location - Click participants in your Zoom toolbar, you will see a box pop up with this at the bottom of the participants' window:



Raise Hand can also be found in the Reactions or the More (...) button on the Zoom toolbar:

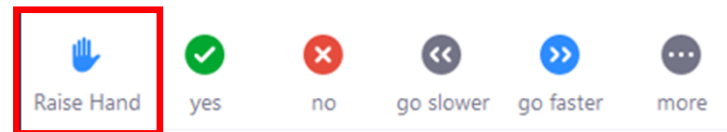
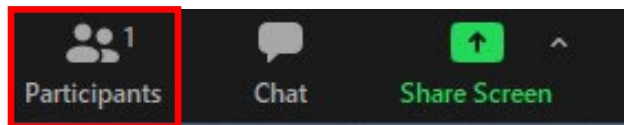


Item 4a – Scooter’s Coffee – 4520 University Avenue – Approval of Major Modification to a Site Plan

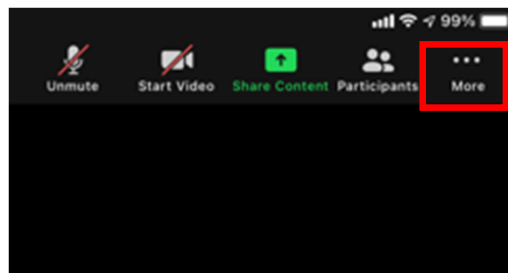
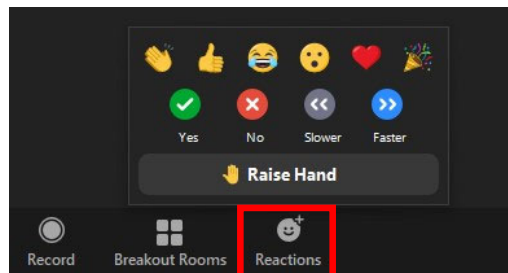
To participate on this item:

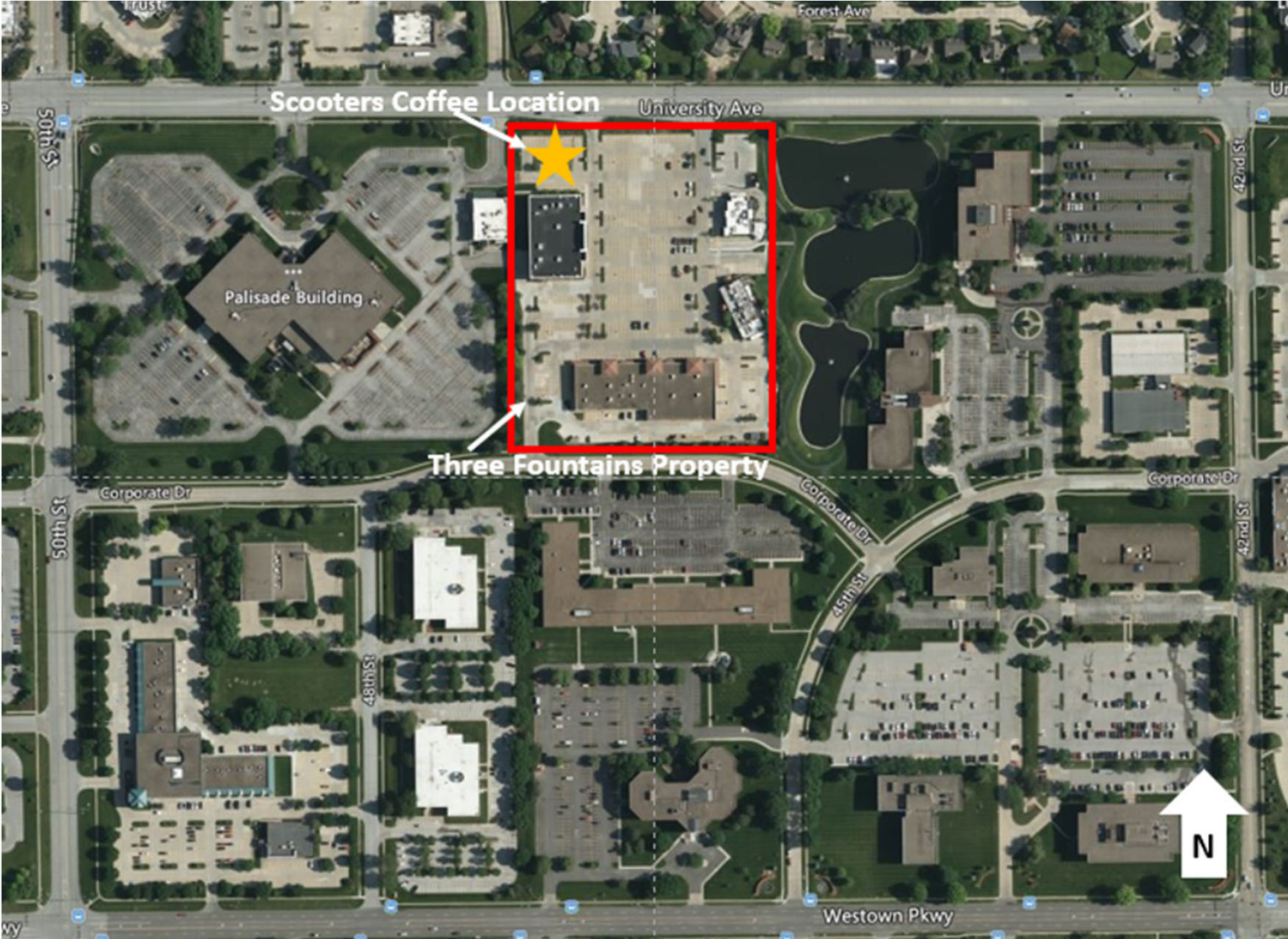
- The Chair will first have the applicant present on the agenda item and will then ask for public comment on the item.
- Please "raise your hand" to indicate that you wish to speak.
- The Chair will then call on you and you will be unmuted.
- **If you are participating by phone, dial *9 to raise or lower your hand, dial *6 to mute/unmute**
- Please note, it is entirely at the Chair’s discretion to limit the length of time that individuals may speak, as well as whether to allow individuals to speak a second time.
- When a motion is made and a vote is called for, ONLY the Commission members vote.

When you are unmuted – please state your name and address for the record before you make your comments.

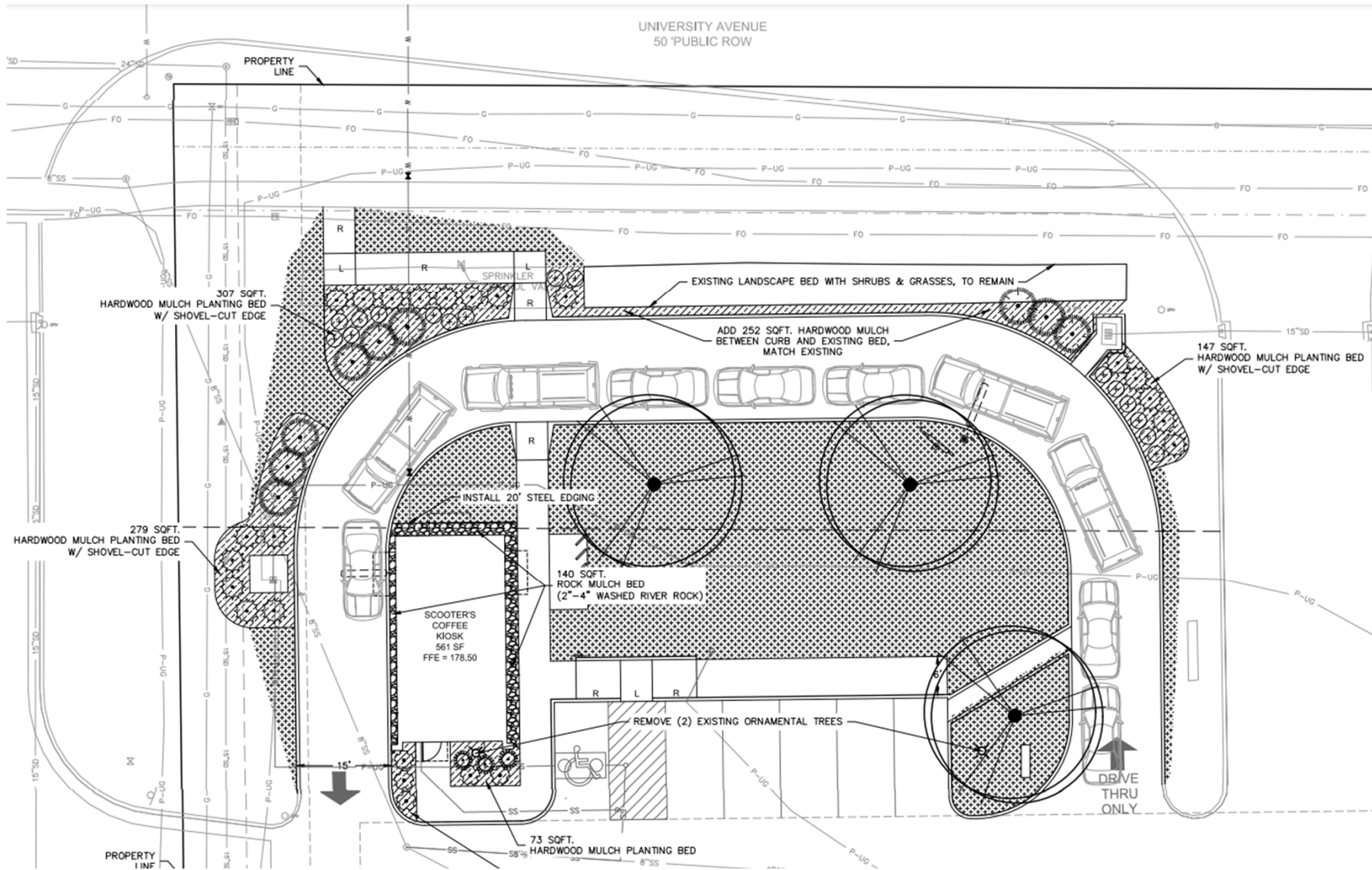


OR





Slide #3

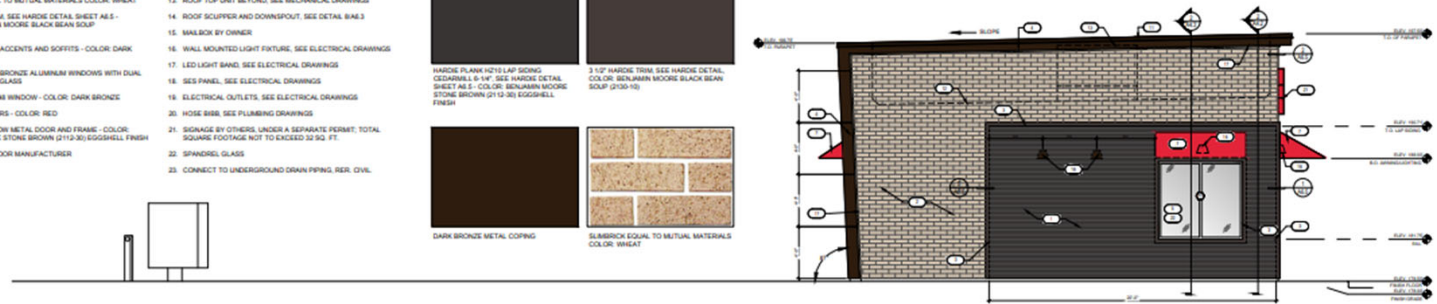


Slide #4

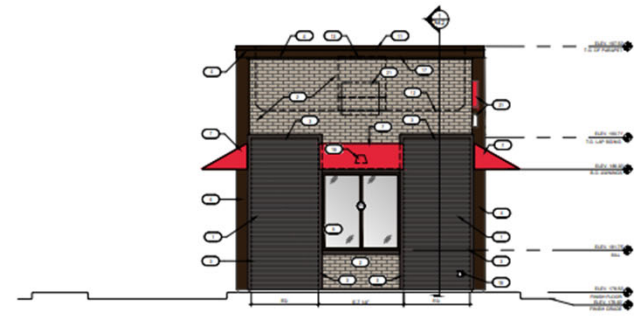
KEYNOTES

1. HARDIE PLANK H210 LAP SOING CEDARWELL 6-1/4" SEE HARDIE DETAIL SHEET A6.5 - COLOR: BENJAMIN MOORE STONE BROWN (2112-30) EGGSHHELL FINISH
2. SLABBRICK EQUAL TO MUTUAL MATERIALS COLOR: WHEAT
3. 3 1/2" HARDIE TRIM SEE HARDIE DETAIL SHEET A6.5 - COLOR: BENJAMIN MOORE BLACK BEAN SOUP (2130-10)
4. 20 GAUGE METAL ACCENTS AND SOFFITS - COLOR: DARK BRONZE
5. INSULATED DARK BRONZE ALUMINUM WINDOWS WITH DUAL PANE TEMPERED GLASS
6. QUICKSERVIE 48X48 WINDOW - COLOR: DARK BRONZE
7. AWNING BY OTHERS - COLOR: RED
8. INSULATED HOLLOW METAL DOOR AND FRAME - COLOR: BENJAMIN MOORE STONE BROWN (2112-30) EGGSHHELL FINISH
9. PEEP HOLE, BY DOOR MANUFACTURER
10. DOOR BELL
11. 20 GAUGE METAL PARAPET CAP
12. LINE OF ROOF BEYOND
13. ROOF TOP UNIT BEYOND, SEE MECHANICAL DRAWINGS
14. ROOF SCUPPER AND DOWNSPOUT, SEE DETAIL B16.3
15. MAILBOX BY OWNER
16. WALL MOUNTED LIGHT FIXTURE, SEE ELECTRICAL DRAWINGS
17. LED LIGHT BAND, SEE ELECTRICAL DRAWINGS
18. SES PANEL, SEE ELECTRICAL DRAWINGS
19. ELECTRICAL OUTLETS, SEE ELECTRICAL DRAWINGS
20. HOSE BIBB, SEE PLUMBING DRAWINGS
21. SIGNAGE BY OTHERS, UNDER A SEPARATE PERMIT, TOTAL SQUARE FOOTAGE NOT TO EXCEED 30 SQ. FT.
22. SPANDREL GLASS
23. CONNECT TO UNDERGROUND DRAIN PIPING, REEL, CIVIL.

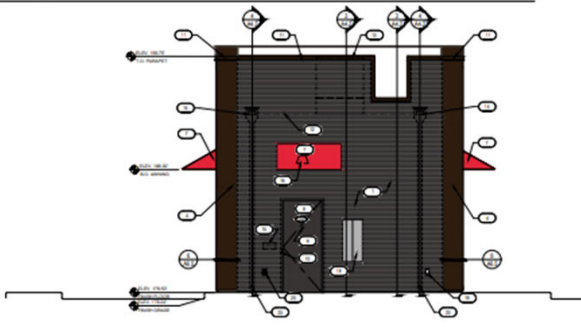
MATERIAL BOARD



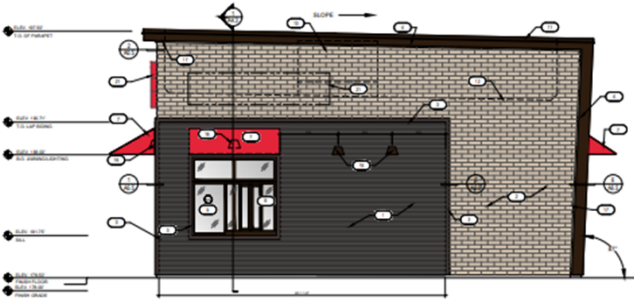
4 EXTERIOR ELEVATIONS
SCALE: 1/4" = 1'-0"



3 EXTERIOR ELEVATIONS
SCALE: 1/4" = 1'-0"



2 EXTERIOR ELEVATIONS
SCALE: 1/4" = 1'-0"



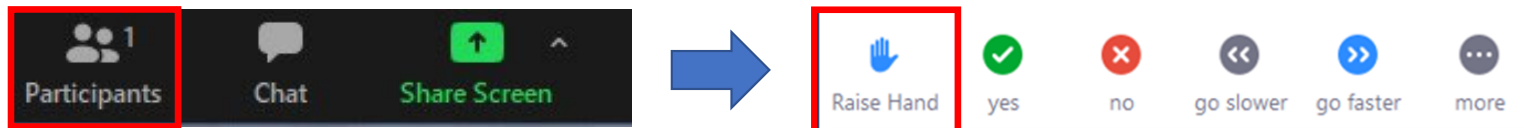
1 EXTERIOR ELEVATIONS
SCALE: 1/4" = 1'-0"

Item 4b – 21 WDM – 950 Jordan Creek Parkway – Approval of Site Plan

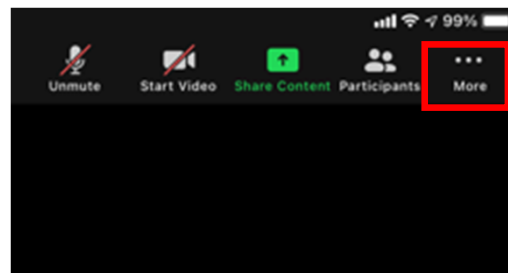
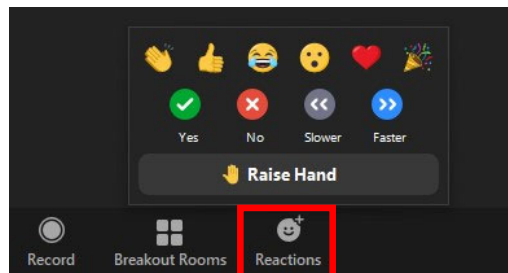
To participate on this item:

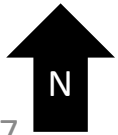
- The Chair will first have the applicant present on the agenda item and will then ask for public comment on the item.
- Please "raise your hand" to indicate that you wish to speak.
- The Chair will then call on you and you will be unmuted.
- **If you are participating by phone, dial *9 to raise or lower your hand, dial *6 to mute/unmute**
- Please note, it is entirely at the Chair's discretion to limit the length of time that individuals may speak, as well as whether to allow individuals to speak a second time.
- When a motion is made and a vote is called for, ONLY the Commission members vote.

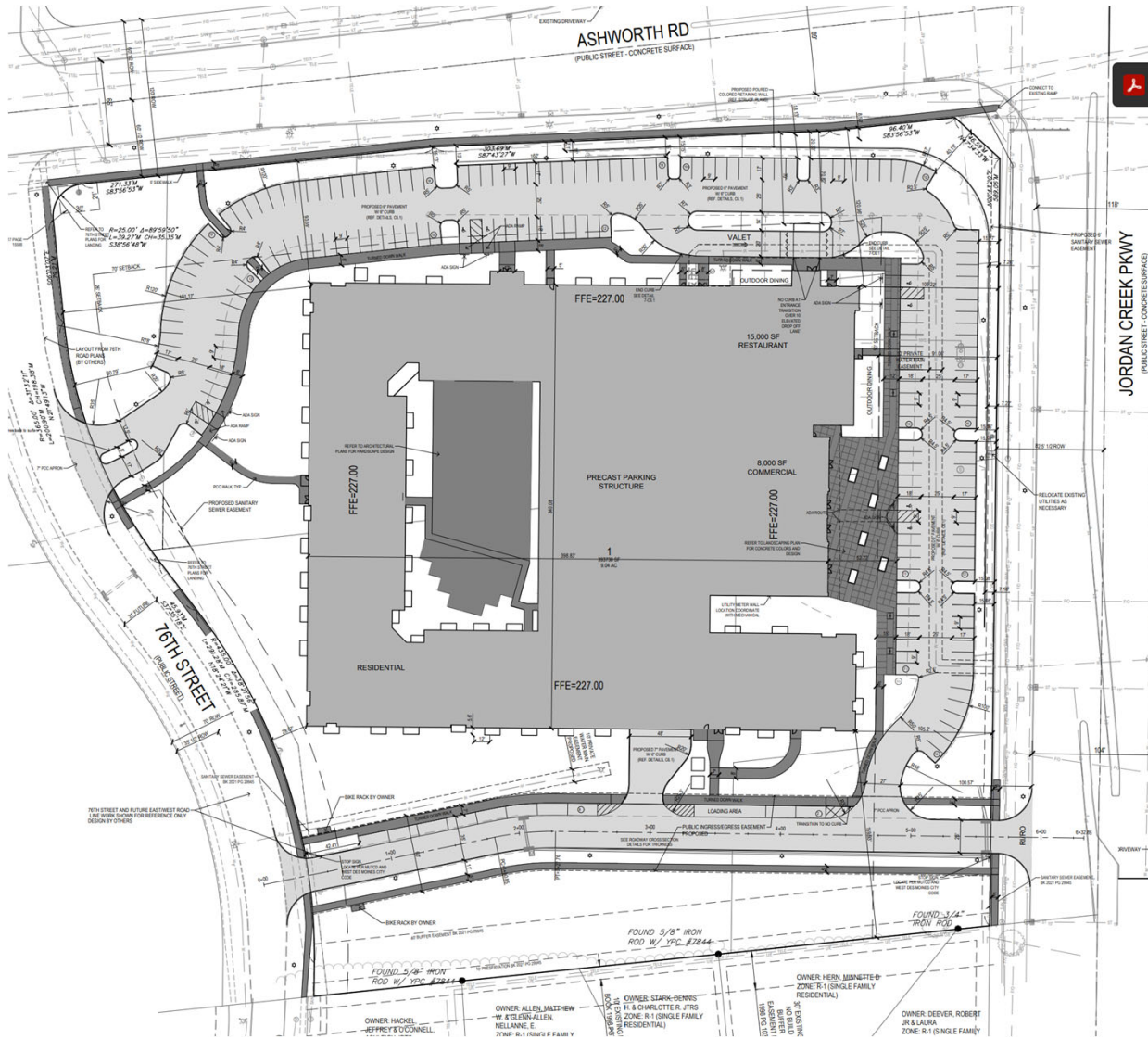
When you are unmuted – please state your name and address for the record before you make your comments.



OR









North Elevation
1/16" = 1'-0"



East Elevation
1/16" = 1'-0"



South Elevation
1/16" = 1'-0"



West Elevation
1/16" = 1'-0"

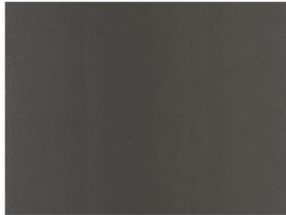
Exterior Materials

- Primary Brick
- Infill & Accent Brick
- Fiber Cement Panel
- Architectural Metals
- Sliding Balcony Door
- Vinyl Hung Windows
- Fiber Cement Accent Panel
- Window & Storefront Glazing

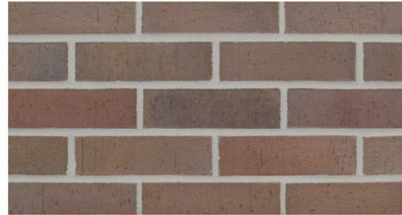
- Exterior Materials (Restaurant)**
- Smart Pergola
 - Sliding Nanovest System
 - R.C. Slanovest Signage
 - Architectural Metal Canopy
 - Brick Veneer
 - Aluminum Storefront



Fiber Cement Panel
James Hardie - Rich Espresso



Primary Brick
Sioux City Brick - Cordovan Bronze



Accent Brick
Sioux City Brick - Silverstone Gray Western



Architectural Metals
Tiger - Terra Powder Coat (or similar)



Vinyl Hung Windows
Lindsay Windows - Midnight Black



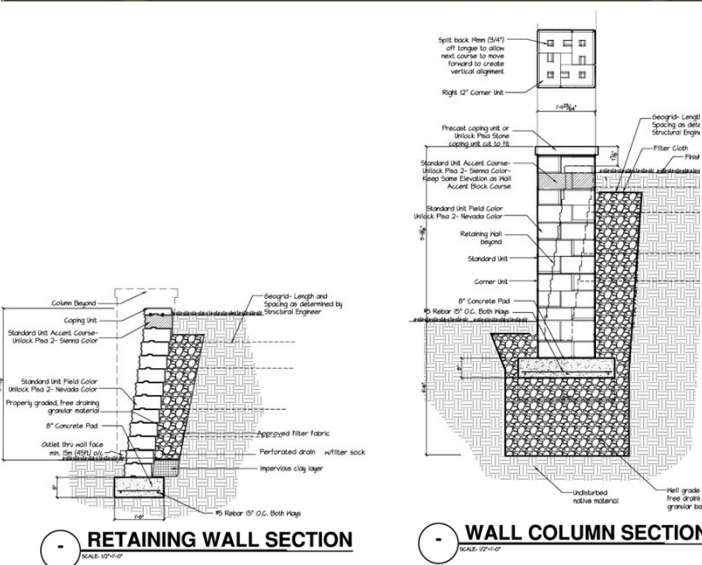
Sliding Balcony Door
Lindsay - Midnight Black



Aluminum Storefront
Kawneer - Anodized Black (or similar) with Clear Glazing



Original Concept Rendering



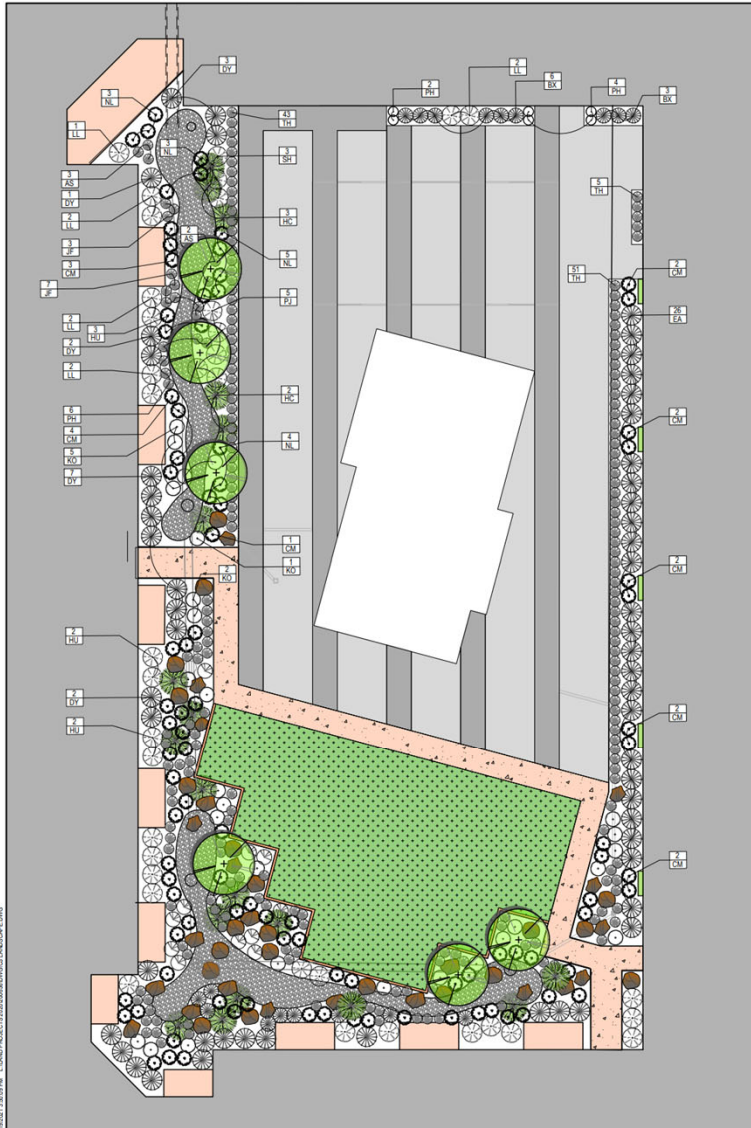









IMAGE COURTESY OF LANDSCAPE PHOTOGRAPHY

LEGEND

-  CANYON TREE: QUAKING ASPEN (ALTERNATE: WHITESPIRE BIRCH)
-  DWARF EVERGREEN TREE: SLENDER HINOKI CYPRESS
-  EVERGREEN SHRUBS: EMERALD ARBORVITAE, DENSIFORMS YEW, BOXWOOD
-  DECIDUOUS SHRUBS: RHODOCENDRON, AZALEA, YIBURNUM, HYDRANGEA, CLETHRA, DAPHNE
-  PERENNIALS: ASSORTED HOSTA, ASTILBE, LITTLE BLUESTEM, TUFTED HAIR GRASS, FOREST GRASS
-  GRANITE BOLDER GROUPING
-  DRY CREEK BED

NOTE: IRRIGATION WITHIN THE COURTYARD IS HIGHLY RECOMMENDED TO MAINTAIN THE PLANTING BEDS. ARCHITECT TO IDENTIFY STUB OUT FROM BUILDING FOR WATER SUPPLY AND WIRING AS WELL AS INTERNAL LOCATION FOR BACKFLOW AND CONTROLLER WITHIN BUILDING MECHANICAL ROOM.

