

Welcome to the March 8, 2022, WDM Plan and Zoning Commission Meeting

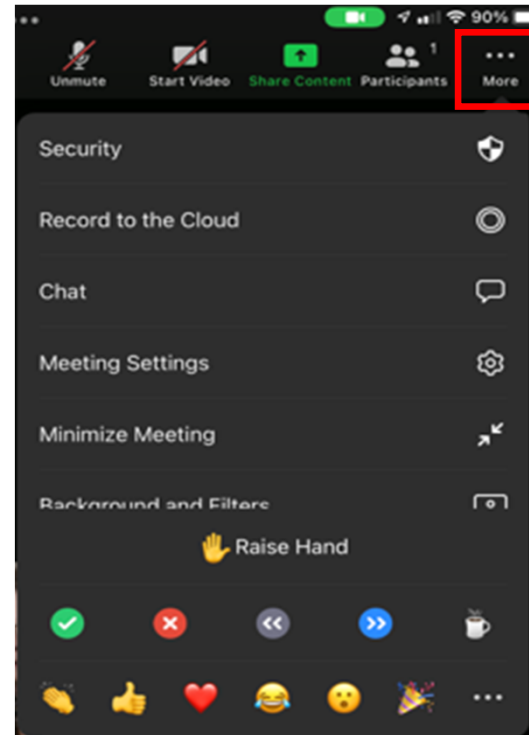
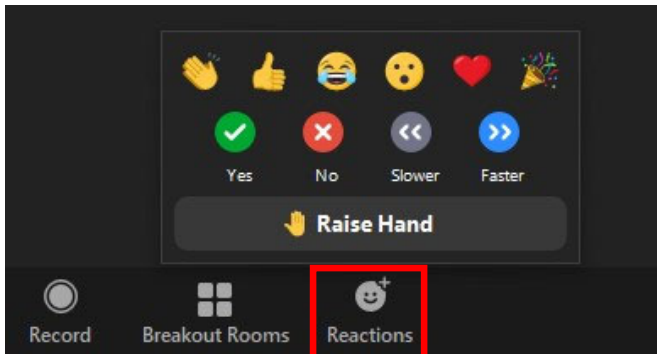
Here are a few housekeeping items before we get started:

- You will be muted by default when joining the meeting. The Commission Chair will first ask for the applicant's and then staff's presentation on an agenda item. After the applicant and staff have presented, the Chair will ask for public comment. At this point, please raise your hand to indicate you wish to speak. The Chair will then call on you and you will be unmuted.
- **If you are participating by phone, dial *9 to raise or lower your hand, dial *6 to unmute or mute**
- **If you are participating by computer or tablet:**



Raise Hand:

Depending on your device, Raise Hand can be found in the Reactions or the More (...) button on the Zoom toolbar:

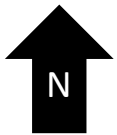


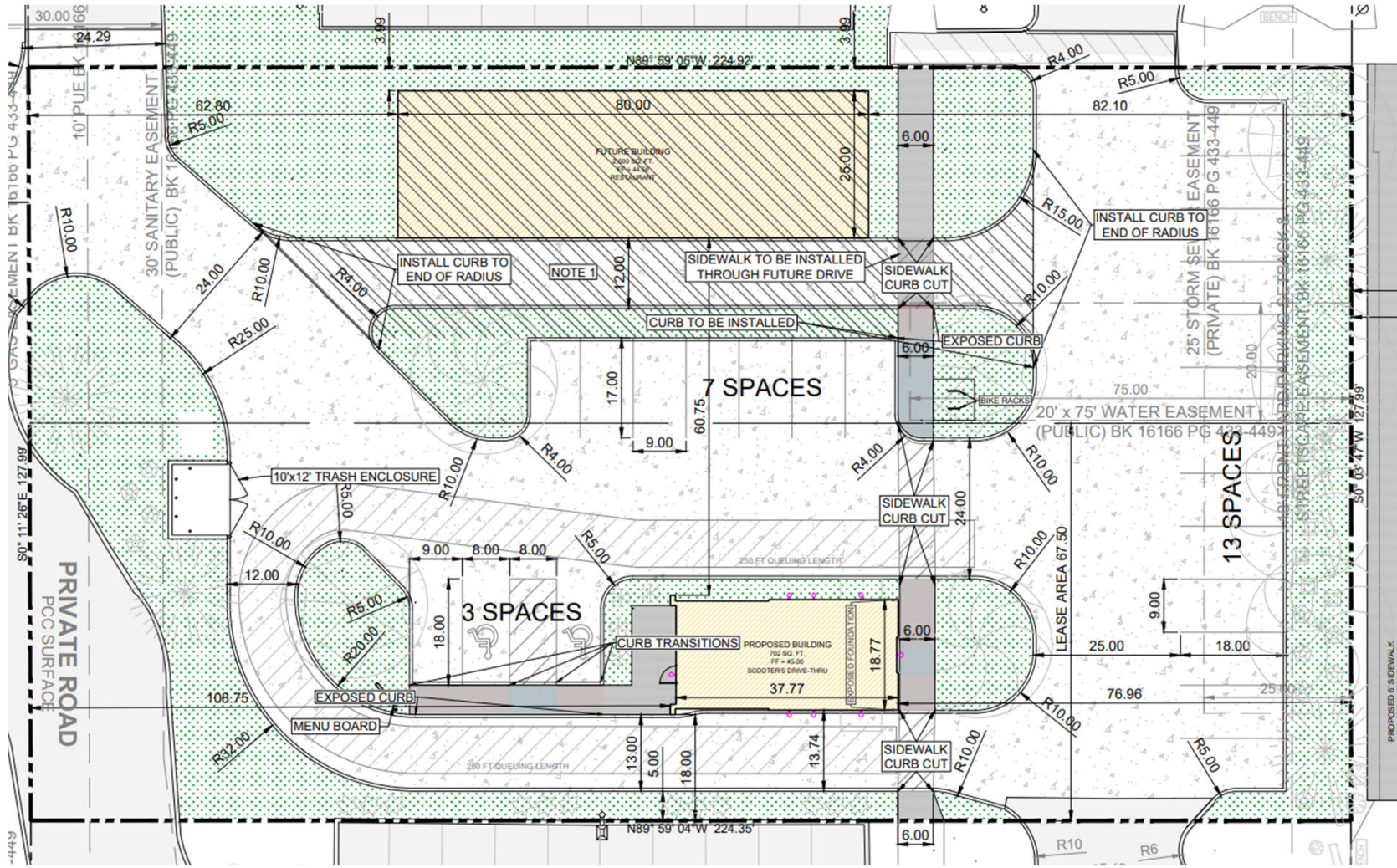
Item 4a – Scooters – 830 1st Street – Approve Site Plan

To participate on this item:

- The Chair will first have the applicant present on the agenda item and will then ask for public comment on the item.
- Please "raise your hand" to indicate that you wish to speak.
- The Chair will then call on you and you will be unmuted.
- **If you are participating by phone, dial *9 to raise or lower your hand, dial *6 to mute/unmute**
- Please note, it is entirely at the Chair's discretion to limit the length of time that individuals may speak, as well as whether to allow individuals to speak a second time.
- When a motion is made and a vote is called for, ONLY the Commission members vote.

When you are unmuted – please state your name and address for the record before you make your comments.



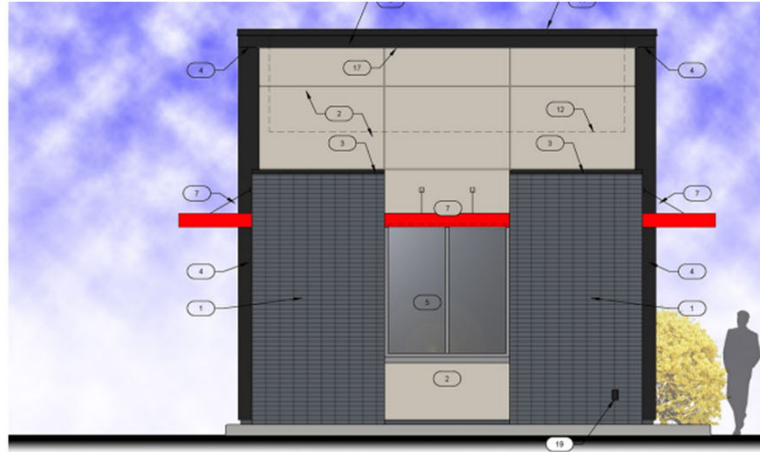


1ST ST (PUBLIC)
PCC DIVIDED ROAD
SPEED LIMIT = 40 MPH
120 FT ROW
60 FT HALF ROW

60.00

LEGEND:

- +/- MORE OR LESS
- F.F. FINISHED FLOOR
- 123.450 GUTTER ELEVATION
- 123.450 TOP OF CURB ELEVATION
- 123.450 EXISTING/PROPOSED ELEVATION
- FL FLOWLINE ELEVATION
- CP CONTROL POINT
- CC CALCULATED CORNER
- CS CALCULATED SECTION
- SP PARKING SPACE
- SN SIGN
- SL STREET LIGHT
- PP POWER POLE
- LA LIGHT POLE AREA LIGHT
- GA GUY ANCHOR
- TJ TEL. JUNCTION
- TE ELEC. TRANSFORMER
- EM ELEC. METER
- EB ELEC. BOX
- EV ELEC. VAULT
- FO FIBER OPTIC
- GM GAS METER
- CTV CABLE TV JUNCTION
- WM WATER METER



2 EXTERIOR ELEVATION - EAST
SCALE: 3/8" = 1'-0"



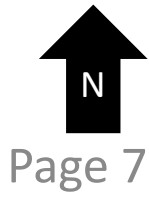
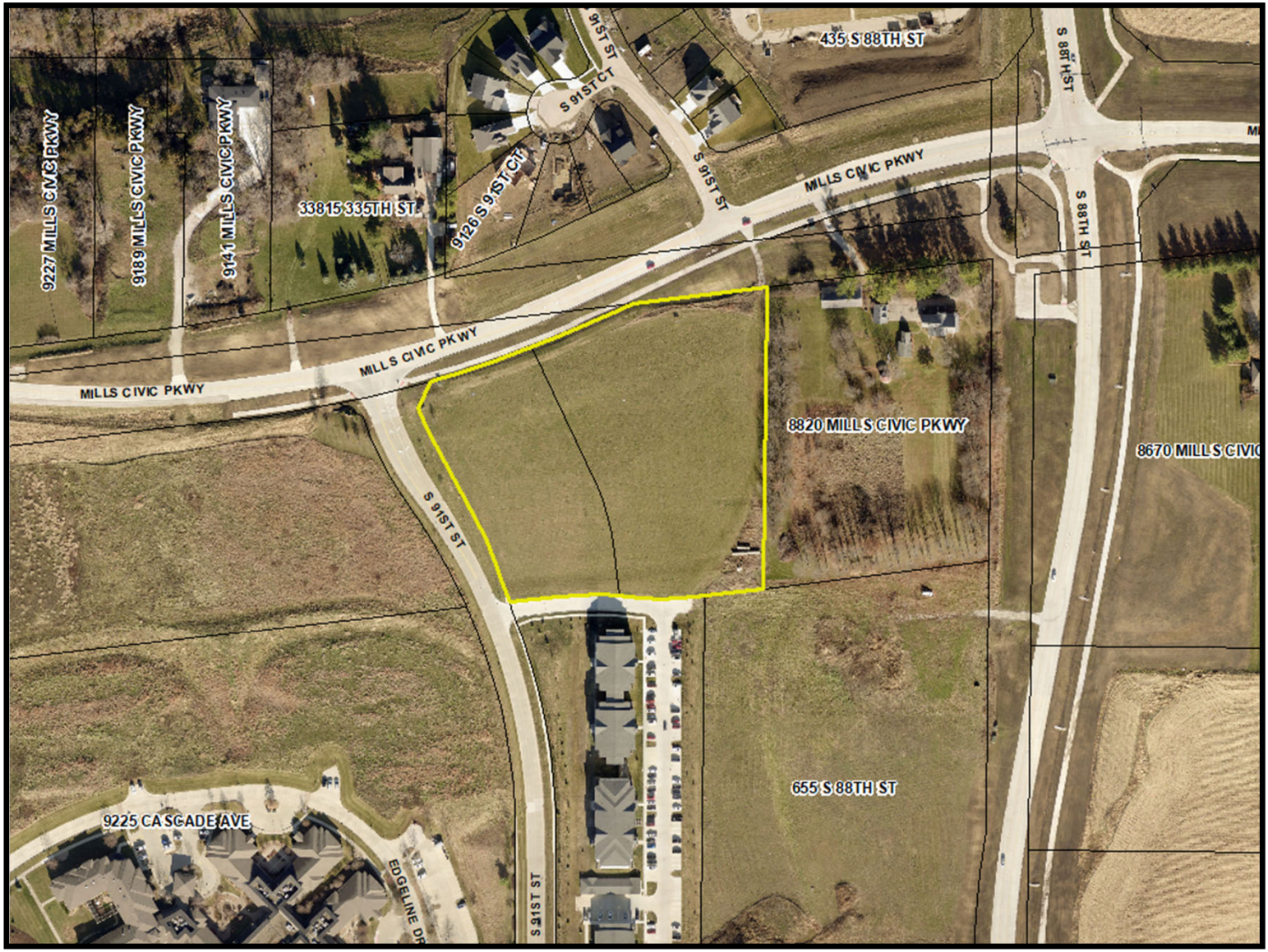
1 EXTERIOR ELEVATION - NORTH
SCALE: 3/8" = 1'-0"

Item 4b – Fareway – 9098 Mills Civic Parkway – Approve Preliminary Plat and Site Plan

To participate on this item:

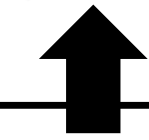
- The Chair will first have the applicant present on the agenda item and will then ask for public comment on the item.
- Please "raise your hand" to indicate that you wish to speak.
- The Chair will then call on you and you will be unmuted.
- **If you are participating by phone, dial *9 to raise or lower your hand, dial *6 to mute/unmute**
- Please note, it is entirely at the Chair's discretion to limit the length of time that individuals may speak, as well as whether to allow individuals to speak a second time.
- When a motion is made and a vote is called for, ONLY the Commission members vote.

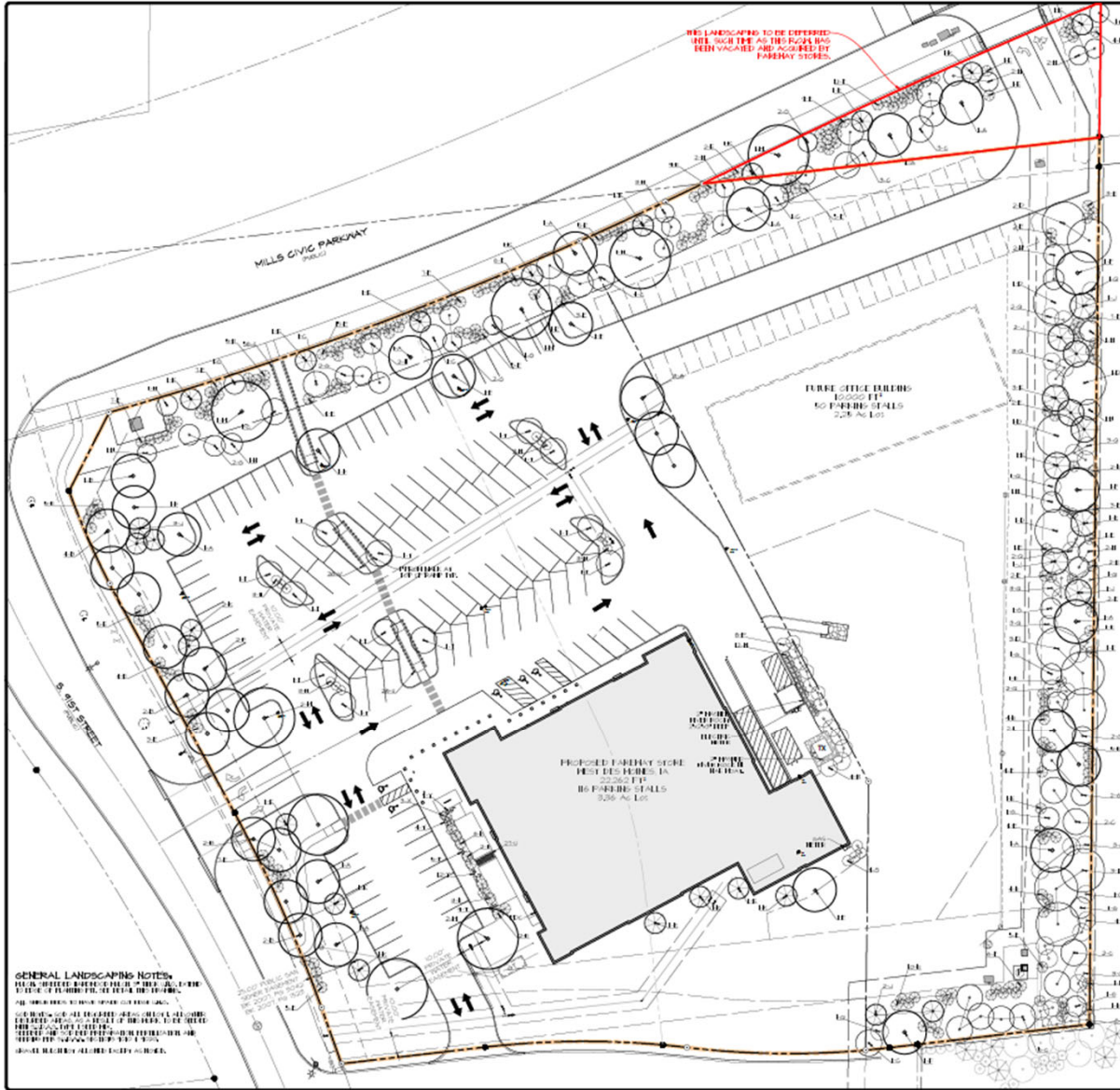
When you are unmuted – please state your name and address for the record before you make your comments.





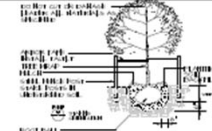
DATE: 11.14.2023	Civil En
DATE: 11.14.2023	2400 9663 SW
DATE: 11.14.2023	913
DATE: 11.14.2023	CEC
DATE: 11.14.2023	TORES, INC.
DATE: 11.14.2023	PARKWAY WEST DES MOINES, IA
DATE: 11.14.2023	PLAN



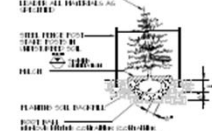


GENERAL LANDSCAPING NOTES:
 1. ALL PLANTING SHALL BE DONE IN ACCORDANCE WITH THE ILLINOIS PLANTING STANDARDS.
 2. ALL PLANTING SHALL BE DONE IN ACCORDANCE WITH THE ILLINOIS PLANTING STANDARDS.
 3. ALL PLANTING SHALL BE DONE IN ACCORDANCE WITH THE ILLINOIS PLANTING STANDARDS.
 4. ALL PLANTING SHALL BE DONE IN ACCORDANCE WITH THE ILLINOIS PLANTING STANDARDS.
 5. ALL PLANTING SHALL BE DONE IN ACCORDANCE WITH THE ILLINOIS PLANTING STANDARDS.

THE LANDSCAPING TO BE DEFERRED UNTIL SUCH TIME AS THE RUSH HAS BEEN VACATED AND ACQUIRED BY FAREWAY STORES.



DECIDUOUS TREE PLANTING AND STAKING DETAIL



EVERGREEN TREE PLANTING AND STAKING DETAIL

OPEN SPACE PLANTING

PARKING AREA PLANTING

PLANTING NOTES

LANDSCAPING TOTALS

PLANT SCHEDULE

NO.	PLANTING SCHEDULE	QTY	SIZE	NOTES
1
2
3
4
5
6
7
8
9
10
11
12
13
14
15
16
17
18
19
20
21
22
23
24
25
26
27
28
29
30
31
32
33
34
35
36
37
38
39
40
41
42
43
44
45
46
47
48
49
50

SIZES NOTED IN PLANT SCHEDULE ARE STREET DIMENSIONS AND SHALL BE VERIFIED DURING FINAL ACCEPTANCE INSPECTION.
MINIMUM OF 10% OF EACH SPECIES SPECIFIED ARE TO HAVE PLANT IDENTIFICATION TAGS ATTACHED DURING FINAL ACCEPTANCE. TAGS SHALL BE REMOVED AFTER PLANT MATERIAL HAS BEEN ACCEPTED.
ALL DECIDUOUS TREES ARE TO BE WRAPPED WITH TREE WRAP AND SHALL BE ATTACHED WITH COTTON STRIPS, TAPES AND PLASTIC FASTENERS AND NOT ACCEPTABLE.



Civil Engineering Consultants, Inc.
 2400 Park Street - Unit 12 - Des Moines, Iowa 50322
 515.276.4654 - info@cecinc.com

CEC

DATE: 08/14/2023
 REVISION: 08/14/2023
 DRAWN BY: J. H. HARRIS
 CHECKED BY: J. H. HARRIS
 IN CHARGE: J. H. HARRIS

FAREWAY STORES, INC.
 1600 MILLS CIVIC PARKWAY, WEST DES MOINES, IA
LANDSCAPING PLAN