

# Welcome to the June 15, 2022, West Des Moines Board of Adjustment Meeting

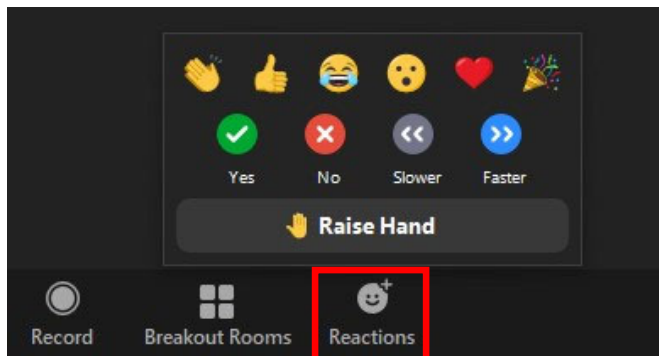
## Here are a few housekeeping items before we get started:

- You will be muted by default when joining the meeting. The Commission Chair will first ask for the applicant's and then staff's presentation on an agenda item. After the applicant and staff have presented, the Chair will ask for public comment. At this point, please raise your hand to indicate you wish to speak. The Chair will then call on you and you will be unmuted.
- **If you are participating by phone, dial \*9 to raise or lower your hand, dial \*6 to unmute or mute**
- **If you are participating by computer or tablet:**



Raise Hand:

Depending on your device, Raise Hand can be found in the Reactions or the More (...) button on the Zoom toolbar:

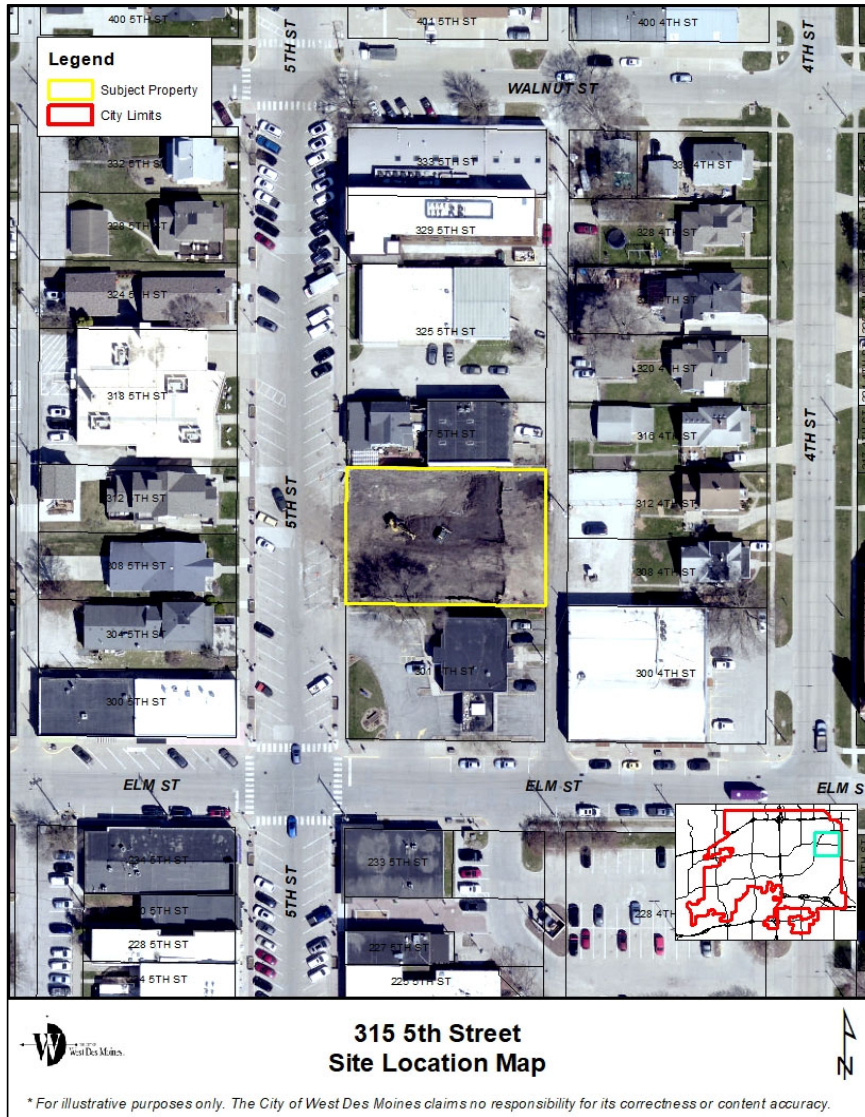


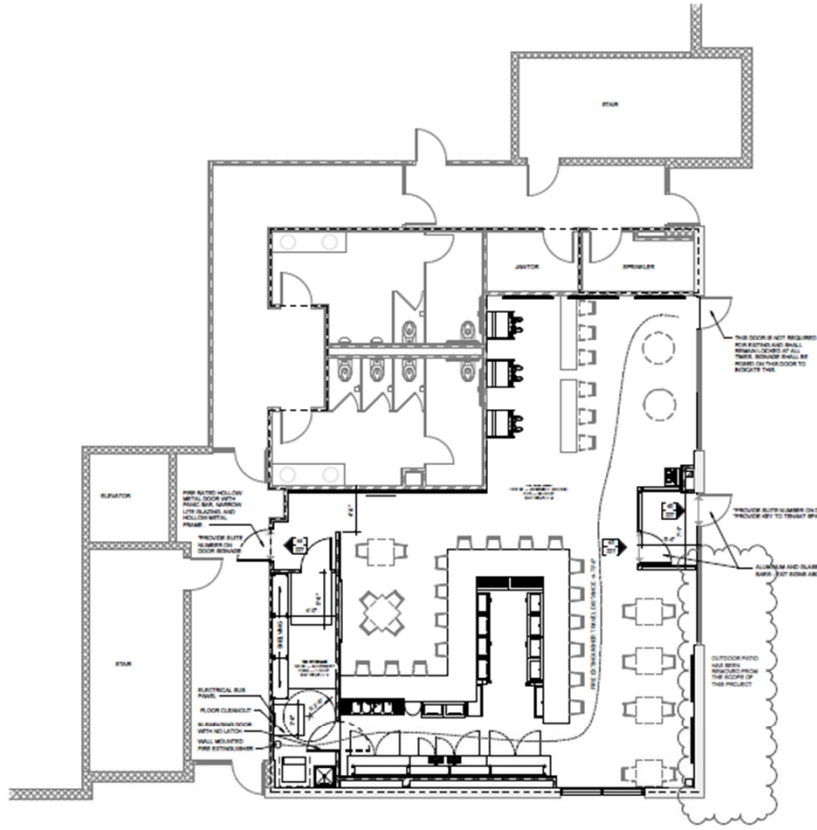
**Item 3a – Champion’s Hideaway - 315 5th Street, Suite 180 –  
Approve Permitted Conditional Use Permit**

**To participate on this item:**

- The Chair will first have the applicant present on the agenda item and will then ask for public comment on the item.
- Please “raise your hand” to indicate that you wish to speak.
- The Chair will then call on you and you will be unmuted.
- **If you are participating by phone, dial \*9 to raise or lower your hand, dial \*6 to mute/unmute**
- Please note, it is entirely at the Chair’s discretion to limit the length of time that individuals may speak, as well as whether to allow individuals to speak a second time.
- When a motion is made and a vote is called for, ONLY the Commission members vote.

**When you are unmuted – please state your name and address for the record before you make your comments.**





1 BUILDING CODE PLAN - MAIN LEVEL  
SHEET 4 OF 11

CLASSIFICATION	GROUP	FUNCTION OF SPACE	AREA	OCCUPANCY LOAD FACTOR	REQUIRED LOAD
101	GROUP 1	OFFICE/RECEPTION	10,000	10	100
102	GROUP 2	RECEPTION	10,000	5	50
TOTAL					150

**CODE PLAN LEGEND**

**DOOR TYPE**  
DOOR TYPE - ROOM NAME  
DOOR TYPE - FUNCTION OF SPACE PER TABLE 103.1.2  
OCCUPANCY LOAD FACTOR - OCCUPANCY LOAD  
DATA REQUIRED - EAST PROVIDED

**DOOR TYPE**  
DOOR TYPE - FUNCTION OF SPACE PER TABLE 103.1.2  
OCCUPANCY LOAD FACTOR - OCCUPANCY LOAD  
DATA REQUIRED - EAST PROVIDED

**FIRE SEPARATION LEGEND**

1 HOUR FIRE BARRIER  
DOOR TYPE - VIEW PER FIRE SEPARATION ACTUAL SEPARATION  
DOOR TYPE - VIEW PER FIRE SEPARATION ACTUAL SEPARATION  
AND MEET THE OCCUPANCY SEPARATION

**CODE INFORMATION**

**PROJECT DESCRIPTION:**  
TRUST SPACE BUILD-OUT OF A EXISTING CONTRACTED BUILDING. NEW TRUST SPACE BUILDING INCLUDES A NEW MAINTENANCE OFFICE AT THE REAR OF THE BUILDING. NECESSARY SANITARIAN, ELECTRICAL, AND OTHER ASSOCIATED WORK.

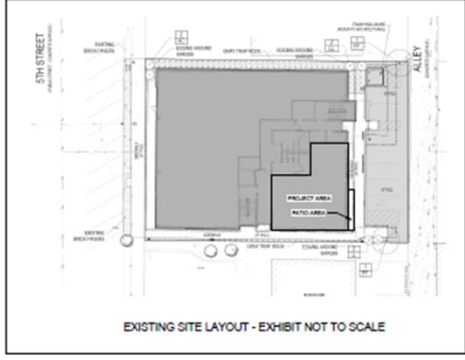
**APPLICABLE CODES:**  
2021 INTERNATIONAL BUILDING CODE  
2021 INTERNATIONAL PLUMBING AND MECHANICAL CODE  
2021 INTERNATIONAL FIRE AND ALARM CODE  
2021 INTERNATIONAL ENERGY EFFICIENCY CODE  
2021 NATIONAL ELECTRICAL CODE  
2021 INTERNATIONAL FIRE PREVENTION CODE  
2021 IBC-MEC

**OCCUPANCY TYPE CATEGORY:**  
GROUP 1

**BUILDING HEIGHT AND AREA CATEGORIES:**  
OCCUPANCY BUILDING TYPE  
GROUP 1  
TOTAL AREA: 10,000 SF

**FIRE RESISTANCE RATING REQUIREMENTS FOR BUILDING ELEMENTS TABLE 601:**  
REQUIREMENTS: INTERIOR 1 HOUR FIRE BARRIER

**FIRE SEPARATION LEGEND:**  
DOOR TYPE - VIEW PER FIRE SEPARATION ACTUAL SEPARATION  
DOOR TYPE - VIEW PER FIRE SEPARATION ACTUAL SEPARATION  
AND MEET THE OCCUPANCY SEPARATION



**FEH DESIGN**  
DESIGNER: BRETT CHAMPION  
315 5TH STREET, WEST DES MOINES, IOWA 50305  
PROJECT NUMBER: 2022207  
SHEET: AG1.2