

## Welcome to the July 11, 2022, WDM Plan and Zoning Commission Meeting

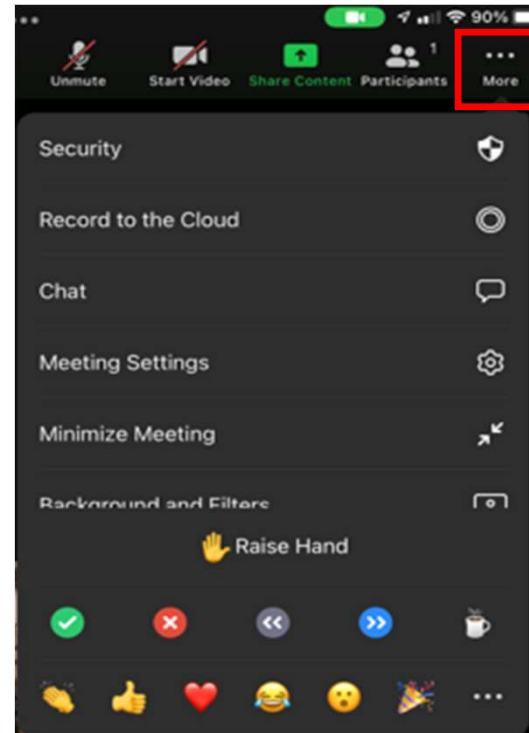
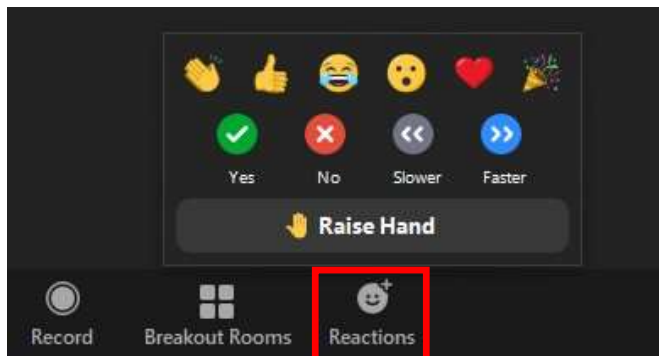
### Here are a few housekeeping items before we get started:

- You will be muted by default when joining the meeting. The Commission Chair will first ask for the applicant's and then staff's presentation on an agenda item. After the applicant and staff have presented, the Chair will ask for public comment. At this point, please raise your hand to indicate you wish to speak. The Chair will then call on you and you will be unmuted.
- **If you are participating by phone, dial \*9 to raise or lower your hand, dial \*6 to unmute or mute**
- **If you are participating by computer or tablet:**



Raise Hand:

Depending on your device, Raise Hand can be found in the Reactions or the More (...) button on the Zoom toolbar:



**Item 2a – Amend City Code – Recreational Facilities**  
**Motion to Withdraw**

**When you are unmuted – please state your name and address for the record before you make your comments.**

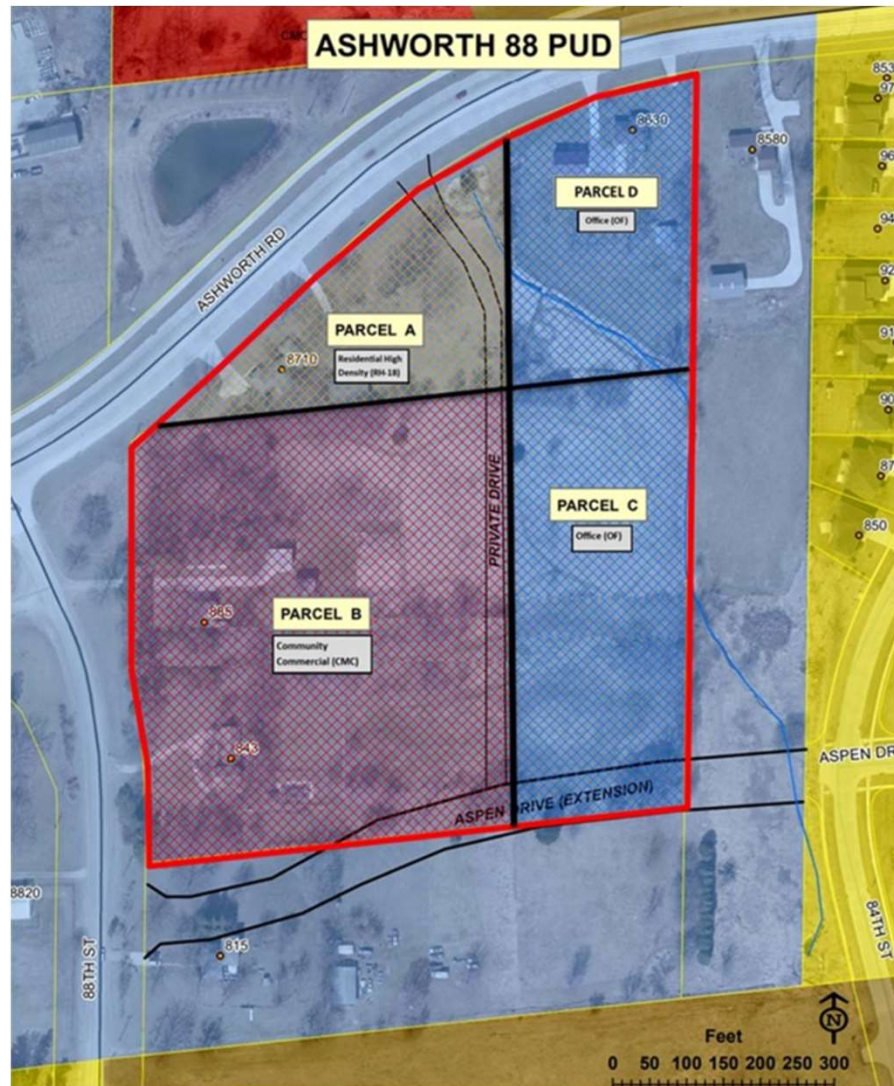
## **Item 2b – Ashworth 88 PUD – SE corner of Ashworth Road and S 88<sup>th</sup> Street - Approval of Comprehensive Plan Amendment and Rezone to PUD**

### **To participate on this item:**

- The Chair will first have the applicant present on the agenda item and will then ask for public comment on the item.
- Please "raise your hand" to indicate that you wish to speak.
- The Chair will then call on you and you will be unmuted.
- **If you are participating by phone, dial \*9 to raise or lower your hand, dial \*6 to mute/unmute**
- Please note, it is entirely at the Chair's discretion to limit the length of time that individuals may speak, as well as whether to allow individuals to speak a second time.
- When a motion is made and a vote is called for, ONLY the Commission members vote.

**When you are unmuted – please state your name and address for the record before you make your comments.**

## Item 2b – Ashworth 88



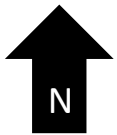
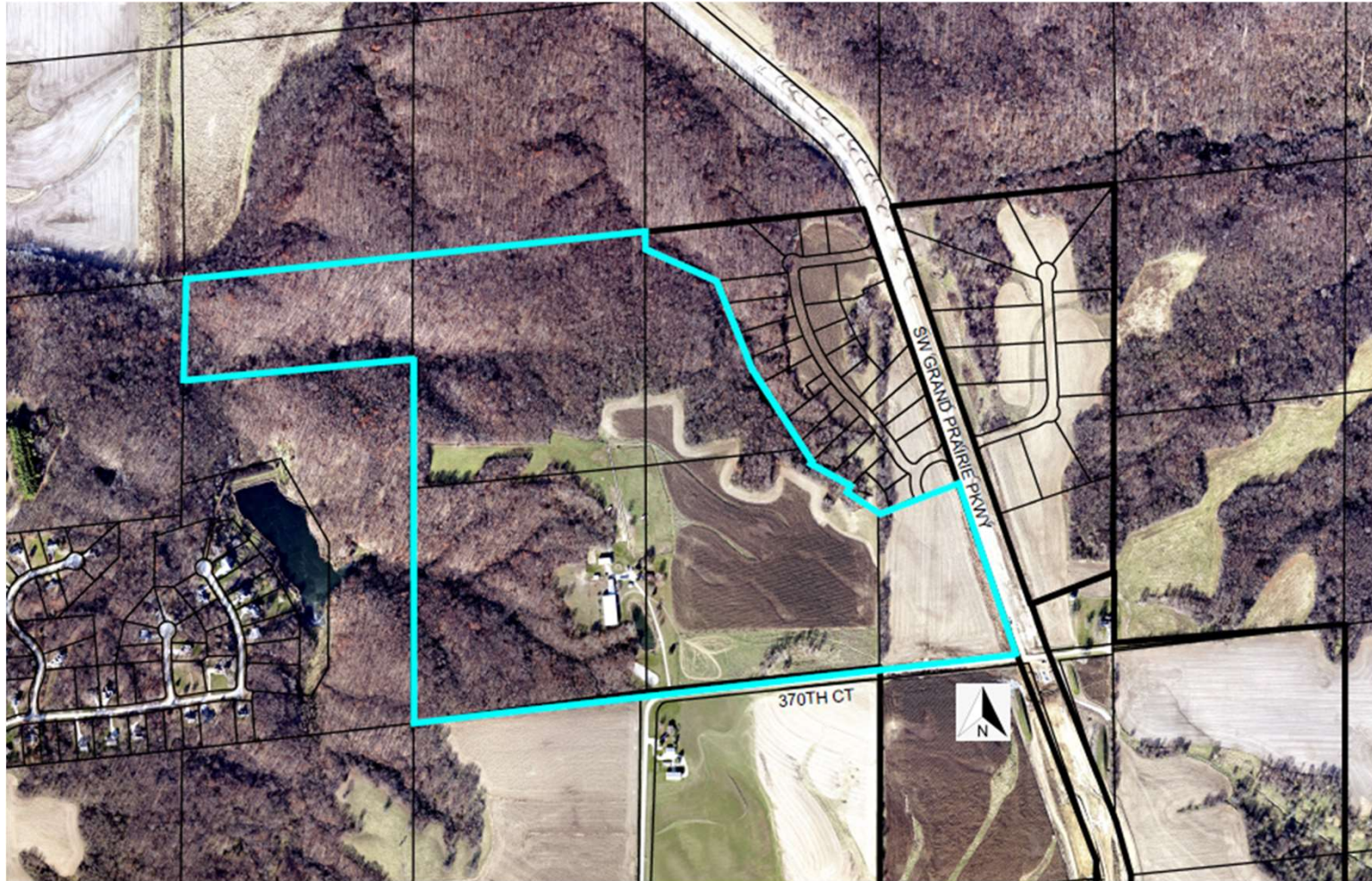
**Item 4a – Timber Knoll Plat 2 – SW corner of SW Grand Prairie Pkwy and  
SW Meadow Rose Ave  
Approval of Preliminary Plat**

**To participate on this item:**

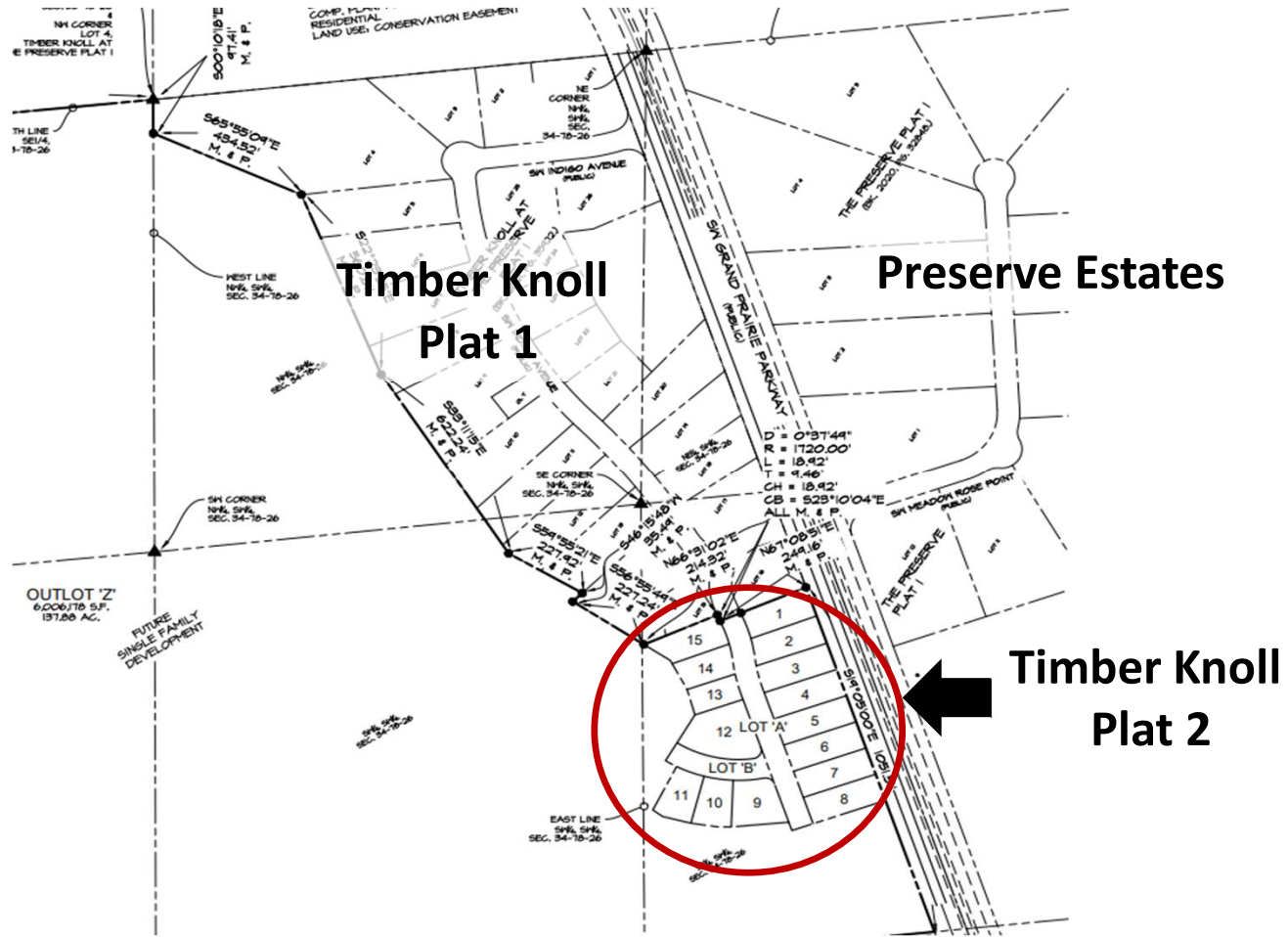
- The Chair will first have the applicant present on the agenda item and will then ask for public comment on the item.
- Please "raise your hand" to indicate that you wish to speak.
- The Chair will then call on you and you will be unmuted.
- **If you are participating by phone, dial \*9 to raise or lower your hand, dial \*6 to mute/unmute**
- Please note, it is entirely at the Chair's discretion to limit the length of time that individuals may speak, as well as whether to allow individuals to speak a second time.
- When a motion is made and a vote is called for, ONLY the Commission members vote.

**When you are unmuted – please state your name and address for the record before you make your comments.**

## Item 4a – Timber Knoll Plat 2



# Item 4a – Timber Knoll Plat 2



## Item 4a – Timber Knoll Plat 2

