

Welcome to the September 6, 2022, WDM Development & Planning Council Subcommittee

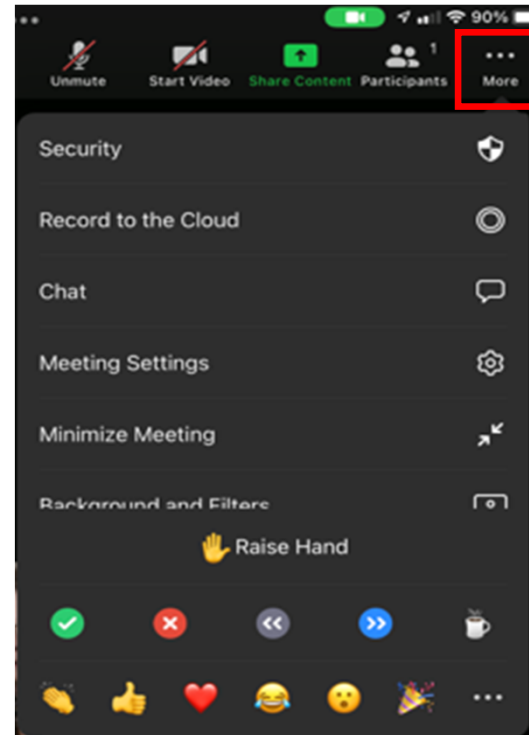
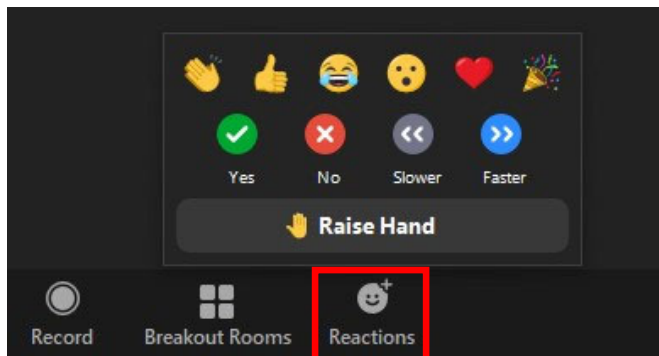
Here are a few housekeeping items before we get started:

- You will be muted by default when joining the meeting. The Commission Chair will first ask for the applicant's and then staff's presentation on an agenda item. After the applicant and staff have presented, the Chair will ask for public comment. At this point, please raise your hand to indicate you wish to speak. The Chair will then call on you and you will be unmuted.
- **If you are participating by phone, dial *9 to raise or lower your hand, dial *6 to unmute or mute**
- **If you are participating by computer or tablet:**

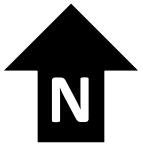
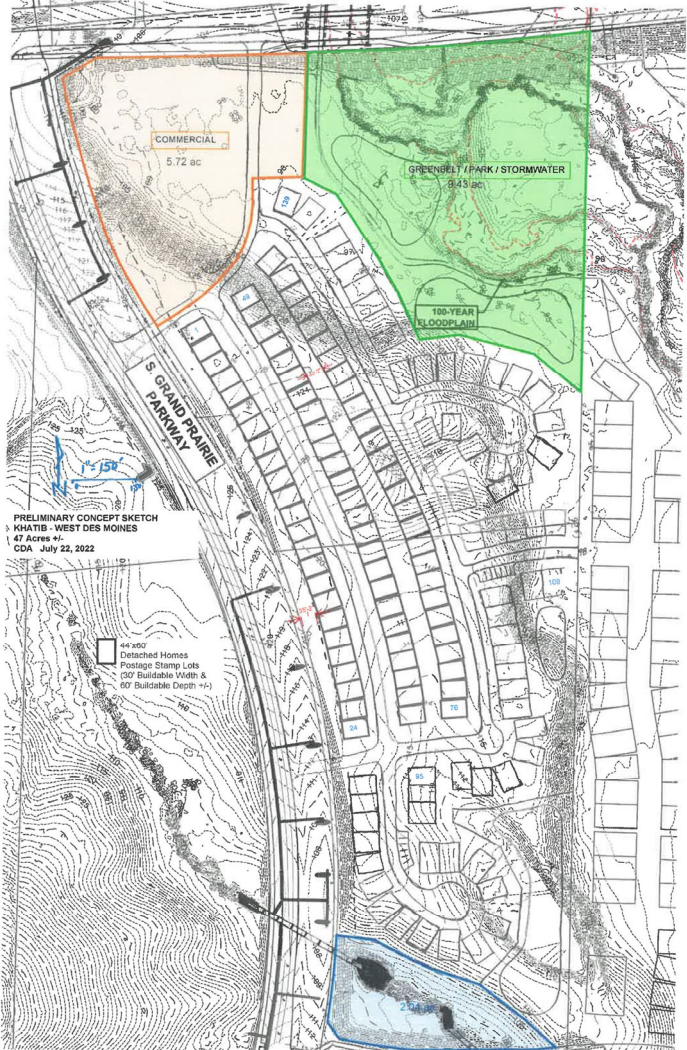


Raise Hand:

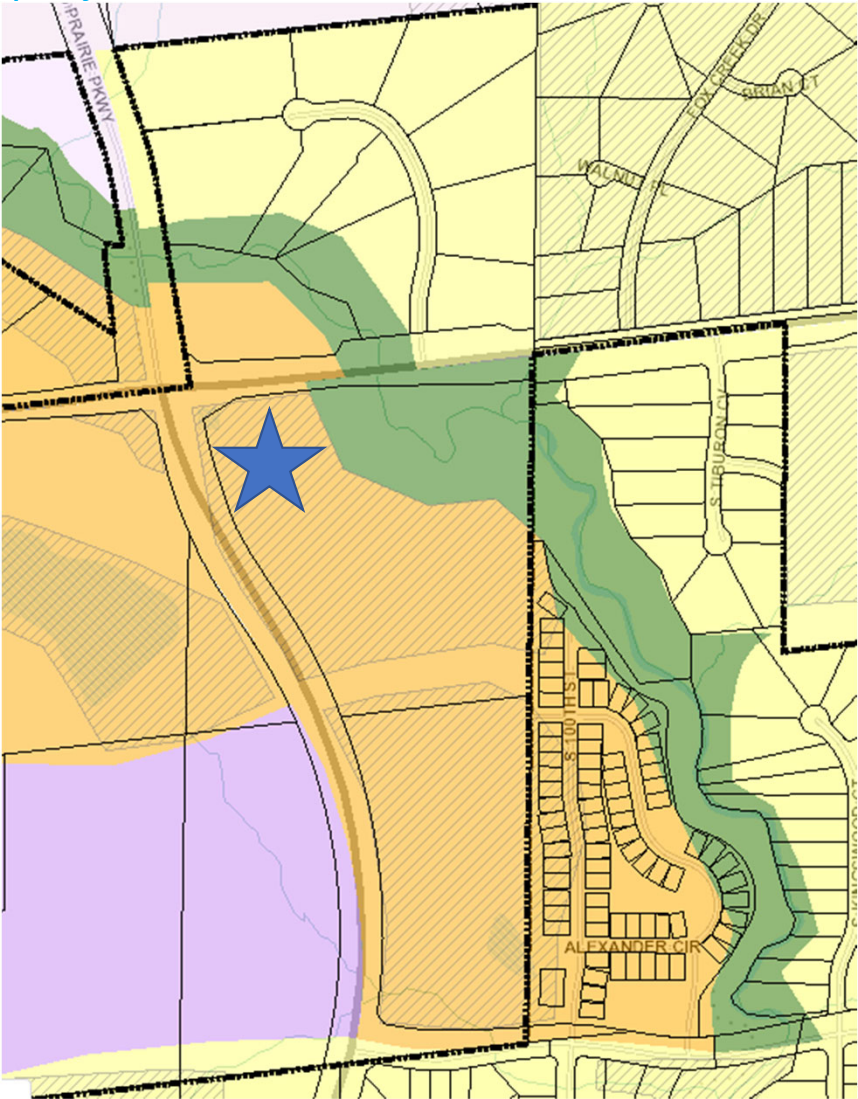
Depending on your device, Raise Hand can be found in the Reactions or the More (...) button on the Zoom toolbar:



Discussion Item #2: *Khatib Property*



Discussion Item #1: *Khatib Property*



Upcoming Projects

To participate on this item:

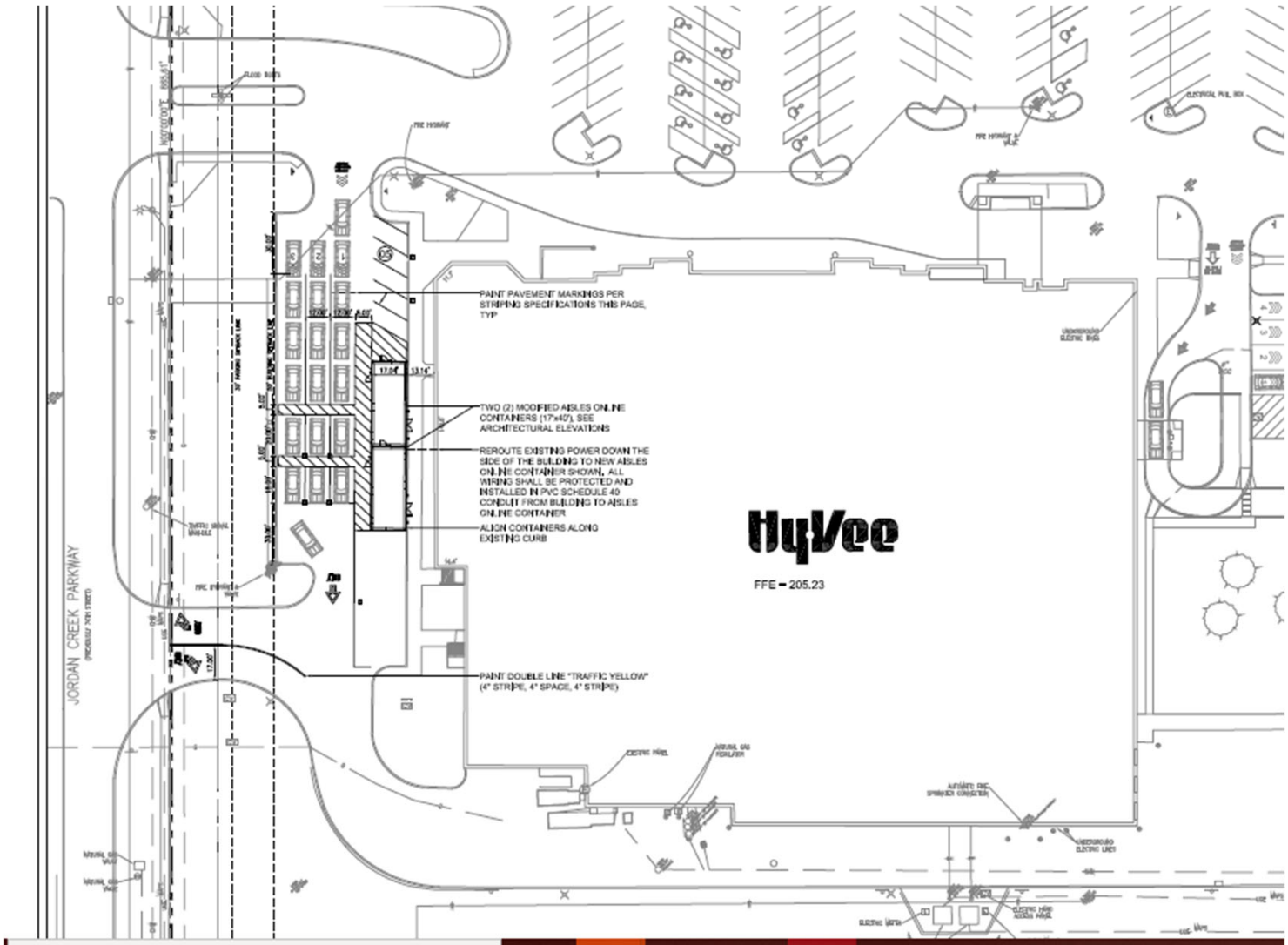
- The Chair will first have staff present explain the project.
- Please "raise your hand" to indicate that you wish to speak.
- The Chair will then call on you and you can unmute.
- **If you are participating by phone, dial *9 to raise or lower your hand, dial *6 to mute/unmute**
- **If you are participating by computer or tablet, the raise your hand and mute/unmute functions can be found on the Zoom toolbars**
- Please note, it is entirely at the Chair's discretion to limit the length of time that individuals may speak, as well as whether to allow individuals to speak a second time.

When you unmute – please state your name and address for the record before you make your comments.

Item a: *Hy-Vee Temporary Aisles Online*



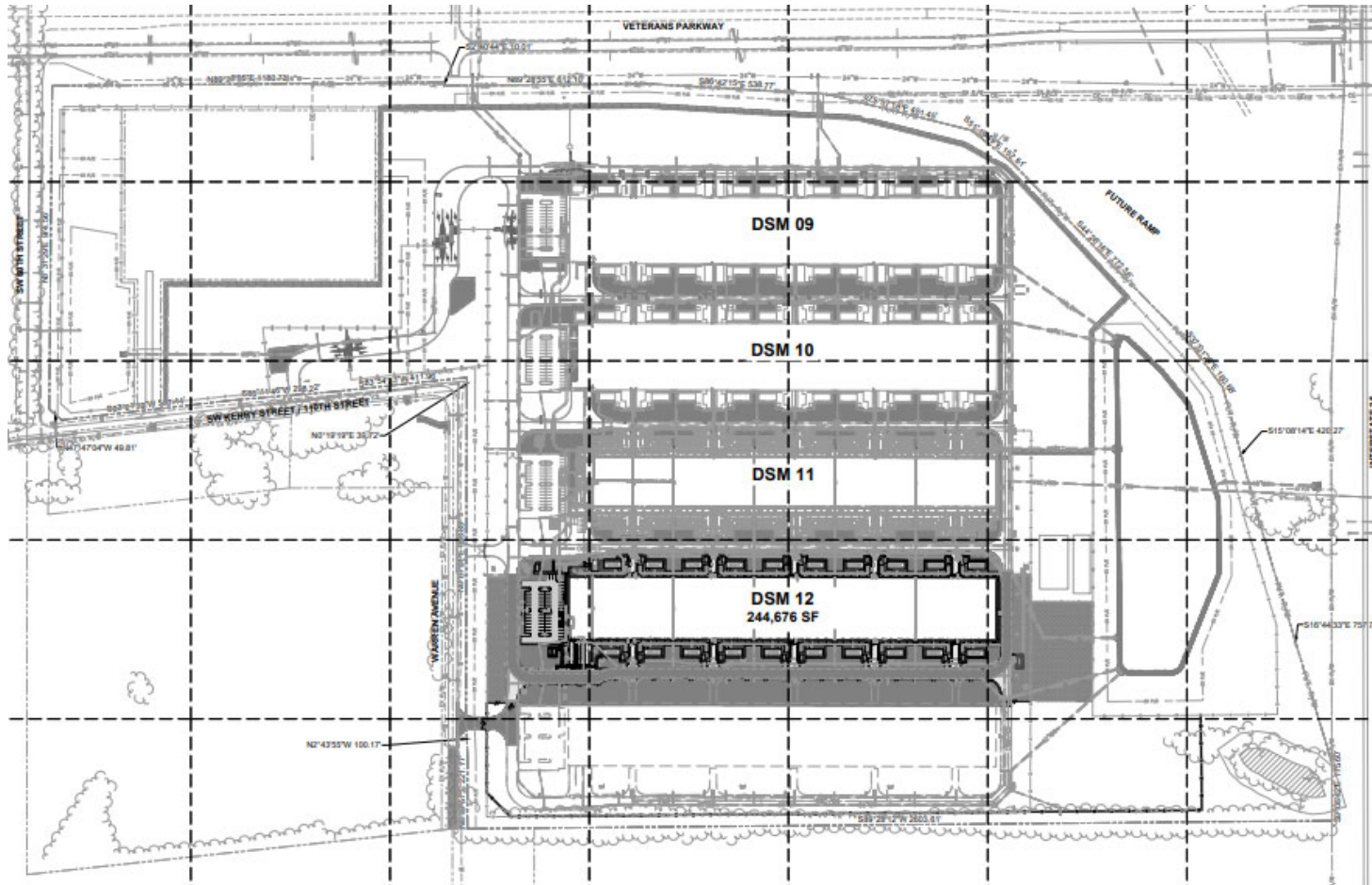
Item a: Hy-Vee Temporary Aisles Online



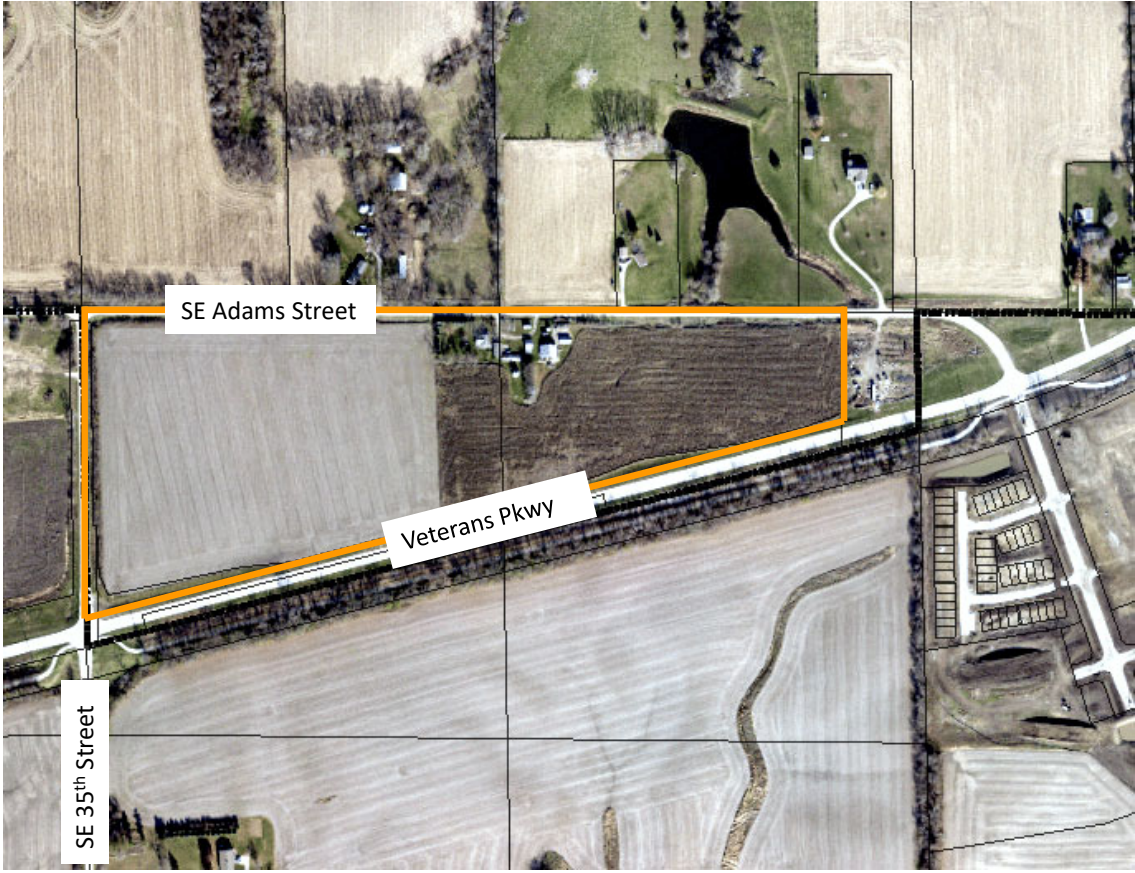
Item b: *Microsoft DSM12*



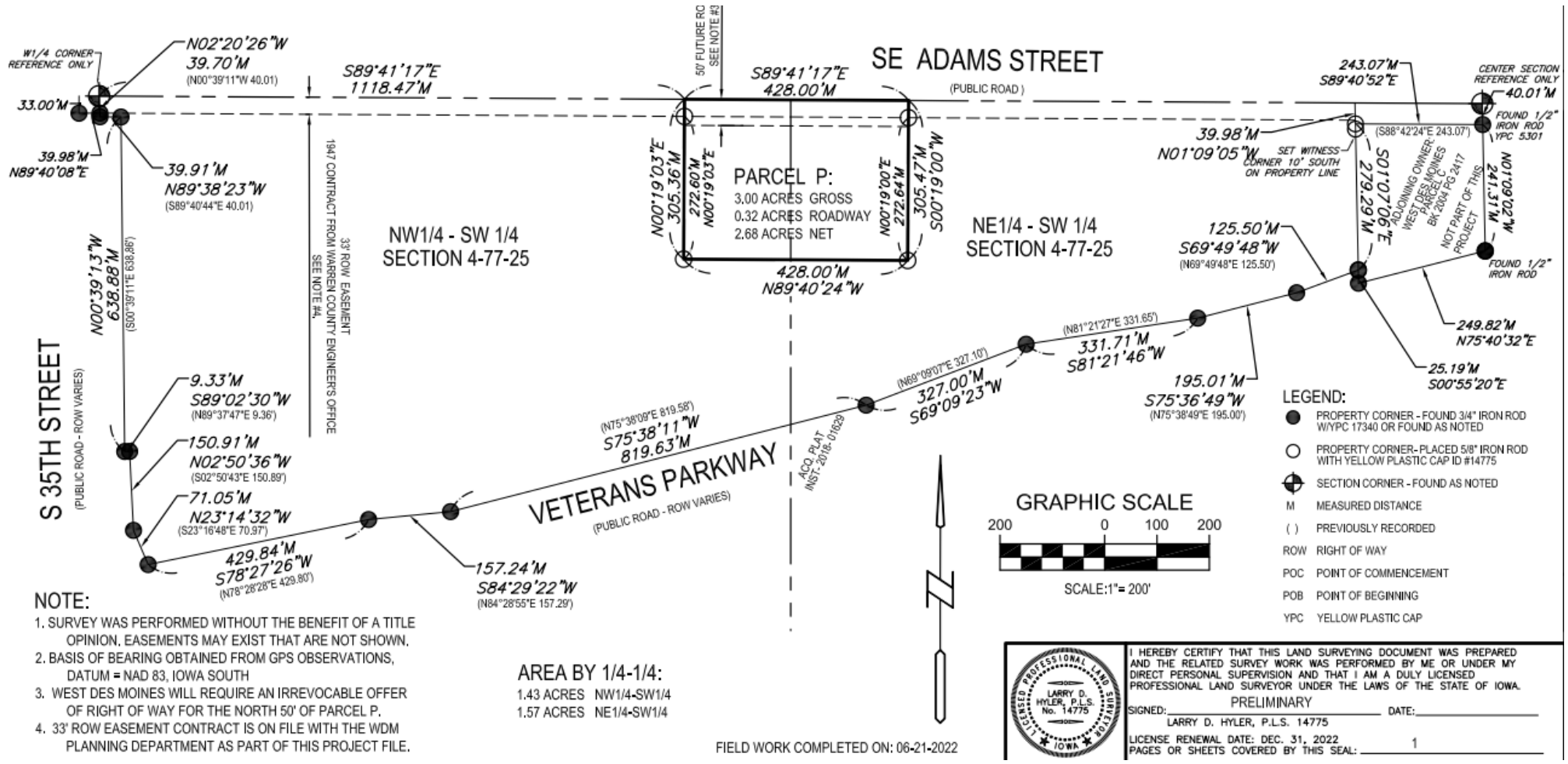
Item b: Microsoft DSM12



Item c: *Webb Plat of Survey*



Item c: Webb Plat of Survey



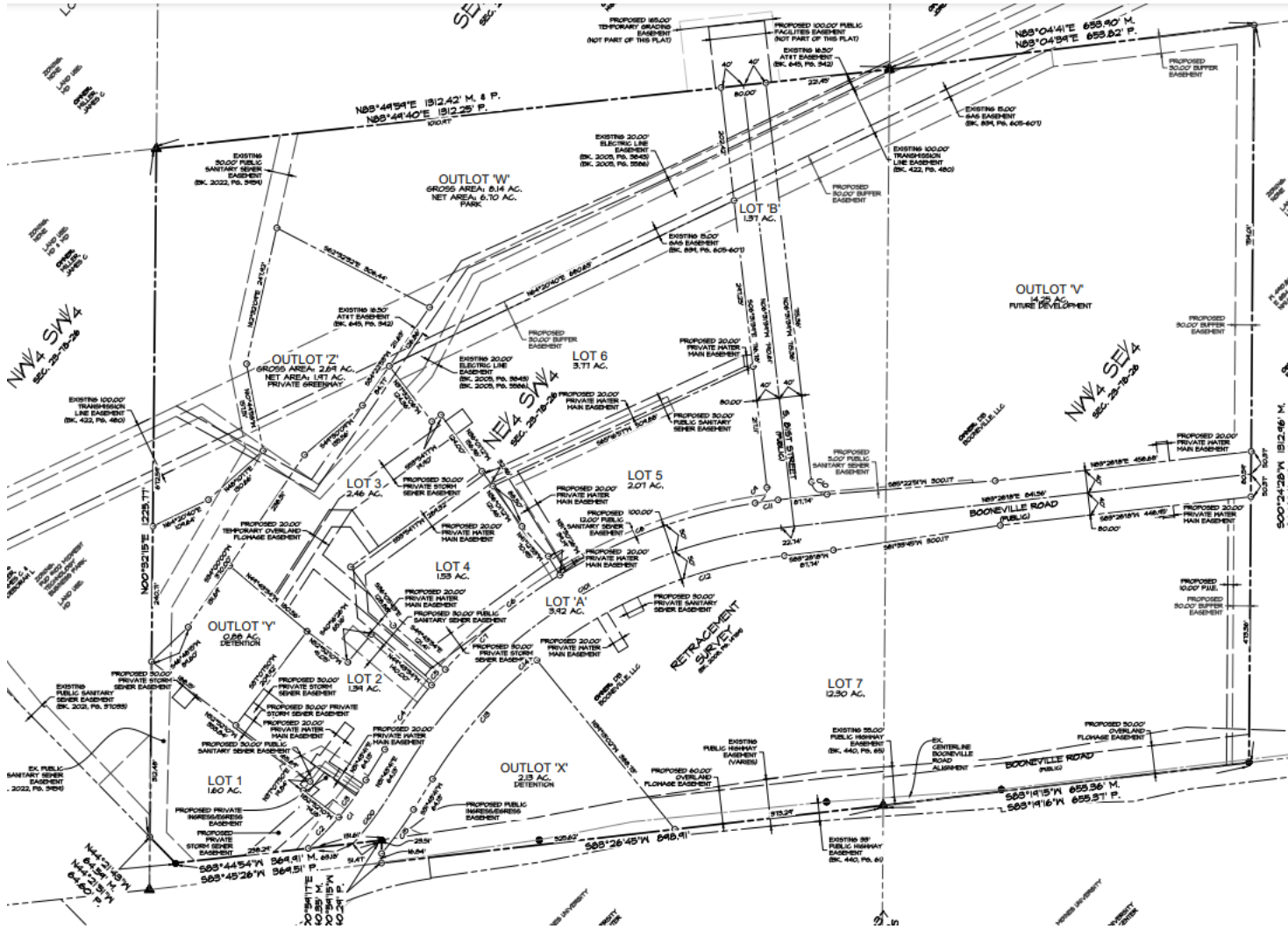
Item d: *Easy Go Liquor*



Item e: *Village at Sugar Creek Preliminary Plat/Final Plat*



Item e: Village at Sugar Creek Preliminary Plat/Final Plat



Item f: *Village at Sugar Creek Apartments*



Item f: Village at Sugar Creek Apartments



Item f: Village at Sugar Creek Apartments (Building A)



①






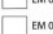








②

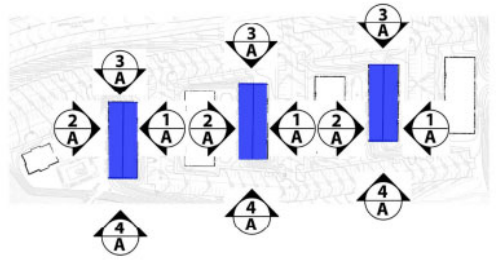


③

④

EXTERIOR MATERIAL LEGEND

 EM 001	STONE VENEER, CENTURION, ALPINE OR SIM	 EM 006	WESTBURY ALUMINUM RAILING - BLACK
 EM 002	HARDIE PLANK, 8.25" CEDARMILL	 EM 007	PREFINISHED METAL DOWNSPOUT
 EM 003	HARDIE PANEL, 5.25" OR 6.26", CEDARMILL	 EM 008	HARDIE TRIM, ROUGH SAWN, WHITE
 EM 004	HARDIE PANEL SIDING WITH 2" VERTICAL BATTEN STRIPS AT 16" O.C.	 EM 009	ASPHALT ROOF
 EM 005	MECHANICAL LOUVER	 EM 010	HARDIE FRIEZE BOARD
		 EM 011	MANUFACTURED ALUMINUM CANOPY
		 EM 012	ROLLEX PREFINISHED ALUMINUM SOFFIT AND FASCIA



Item f: *Village at Sugar Creek Apartments (Building B)*



①















②

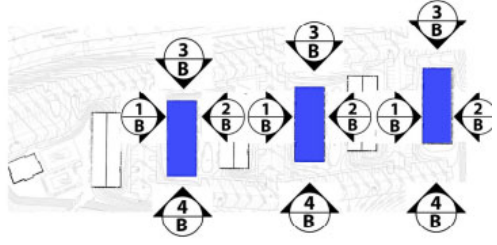


③

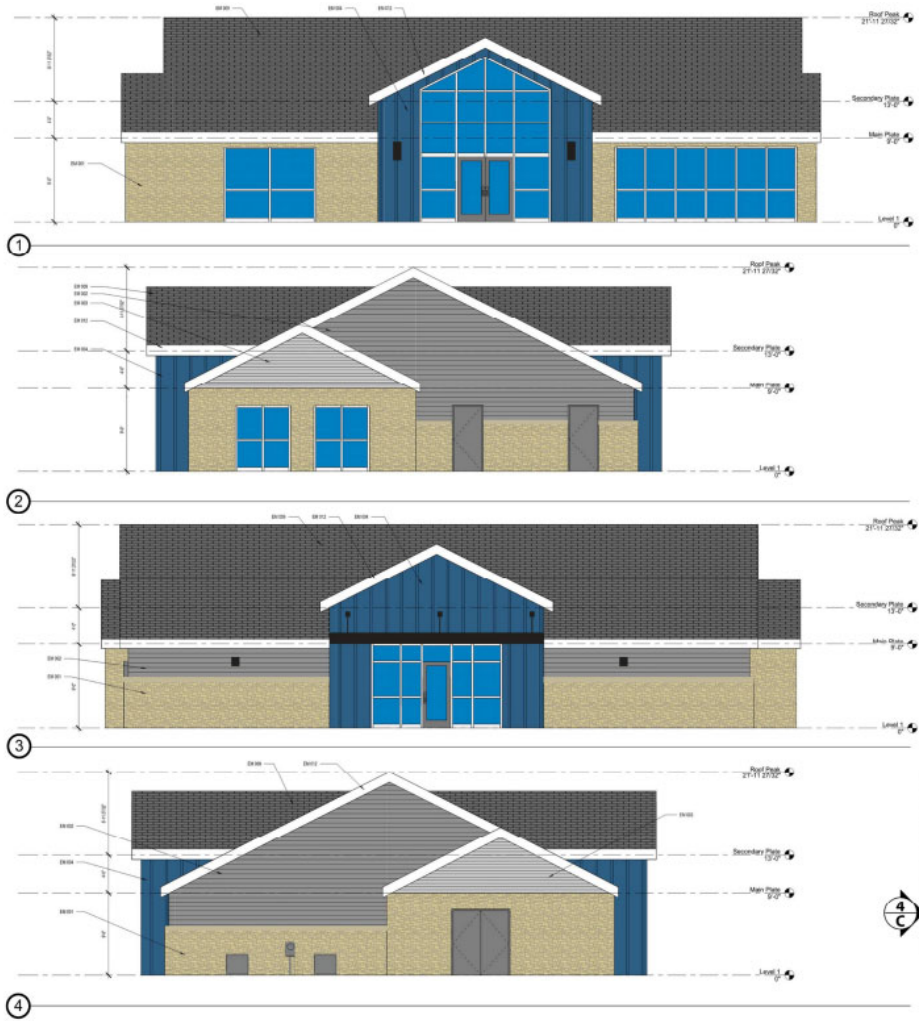
④

EXTERIOR MATERIAL LEGEND

 EM 001	STONE VENEER, CENTURION, ALPINE OR SIM	 EM 006	WESTBURY ALUMINUM RAILING - BLACK
 EM 002	HARDIE PLANK, 8.25", CEDARMILL	 EM 007	PREFINISHED METAL DOWNSPOUT
 EM 003	HARDIE PANEL, 5.25" OR 8.25", CEDARMILL	 EM 008	HARDIE TRIM, ROUGH SAWN, WHITE
 EM 004	HARDIE PANEL SIDING WITH 2" VERTICAL BATTEN STRIPS AT 16" O.C.	 EM 009	ASPHALT HUMP
 EM 005	MECHANICAL LOUVER	 EM 010	HARDIE FRIEZE BOARD
		 EM 011	MANUFACTURED ALUMINUM CANOPY
		 EM 012	ROLLEX PREFINISHED ALUMINUM SOFFIT AND FASCIA

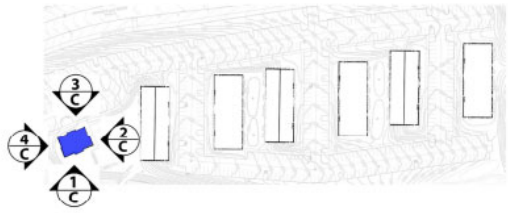


Item f: Village at Sugar Creek Apartments (Clubhouse)

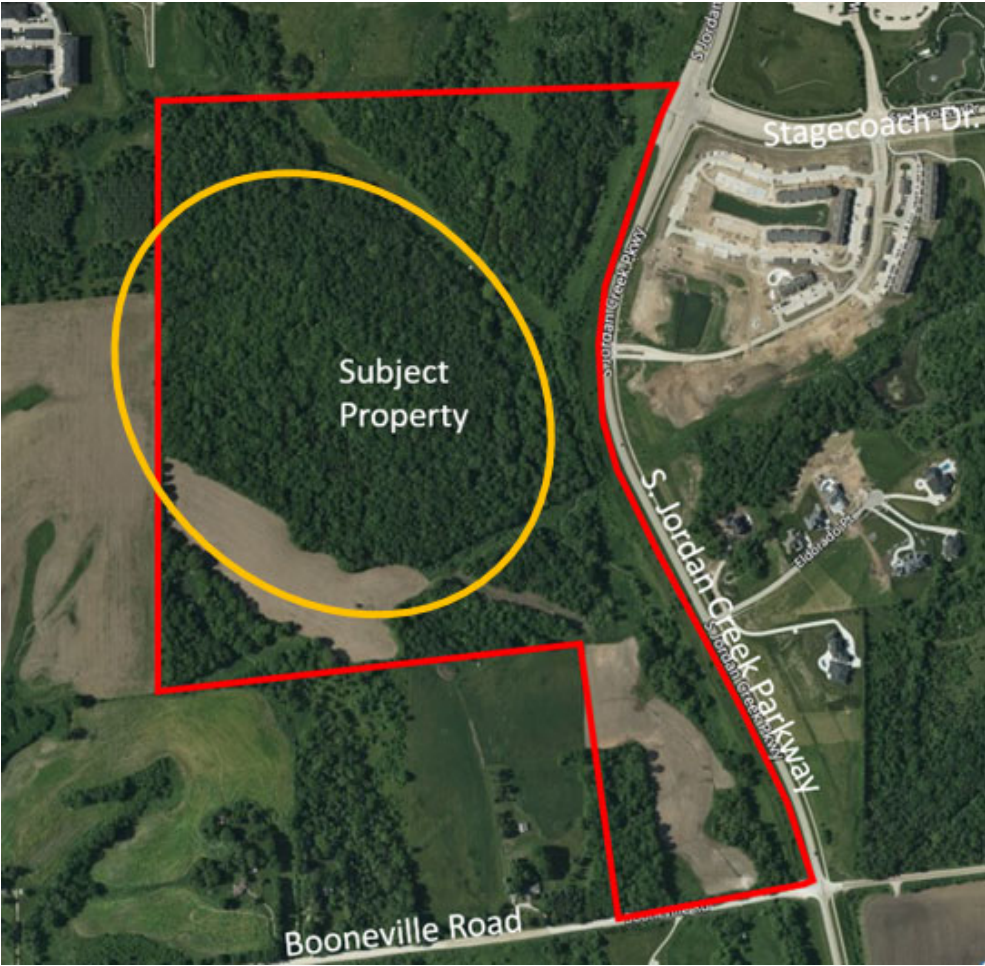


EXTERIOR MATERIAL LEGEND

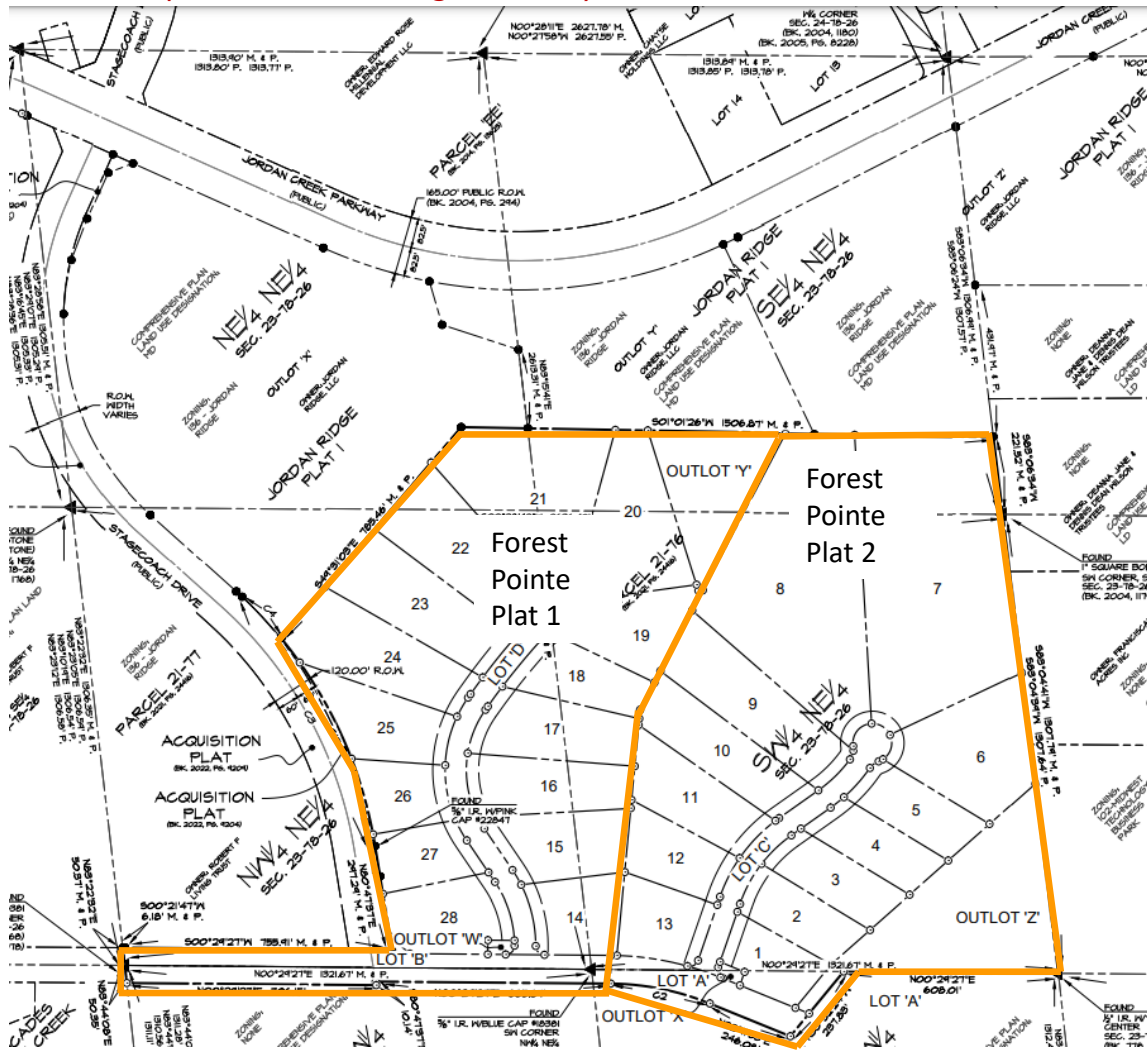
EM 001	STONE VENEER, CERTURION, ALPINE OR SIM	EM 006	WESTBURY ALUMINUM RAILING - BLACK
EM 002	HARDIE PLANK, 8.25" CEDARMILL	EM 007	PREFINISHED METAL DOWNSPOUT
EM 003	HARDIE PANEL, 5.25" OR 6.26", CEDARMILL	EM 008	HARDIE TRIM, ROUGH SAWN, WHITE
EM 004	HARDIE PANEL SIDING WITH 2" VERTICAL BATTEN STRIPS AT 16" O.C.	EM 009	ASPHALT ROOF
EM 005	MECHANICAL LOUVER	EM 010	HARDIE FRIEZE BOARD
		EM 011	MANUFACTURED ALUMINUM CANOPY
		EM 012	ROLLEX PREFINISHED ALUMINUM SOFFIT AND FASCIA



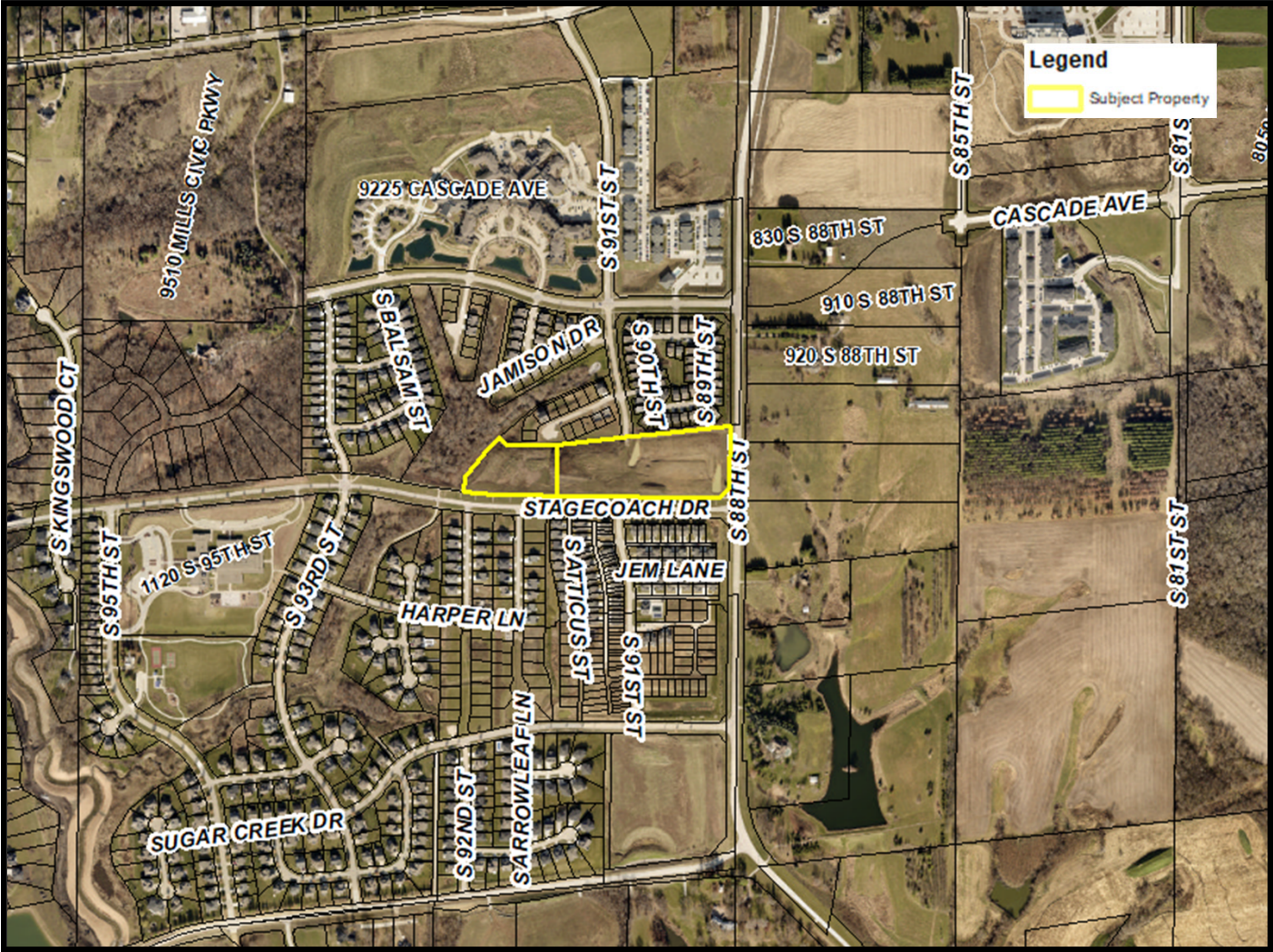
Item g: Forest Pointe Plat 1 (fka Jordan Ridge Plat 2)



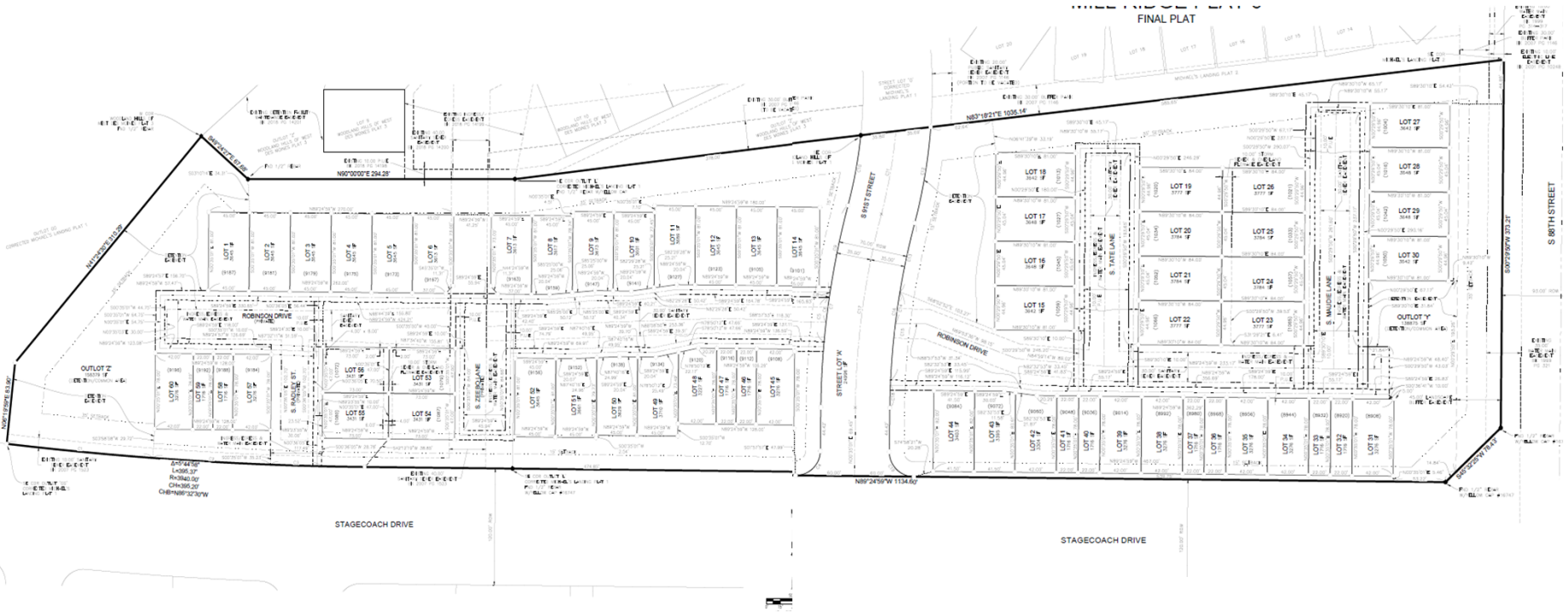
Item g: Forest Pointe Plat 1 (fka Jordan Ridge Plat 2)



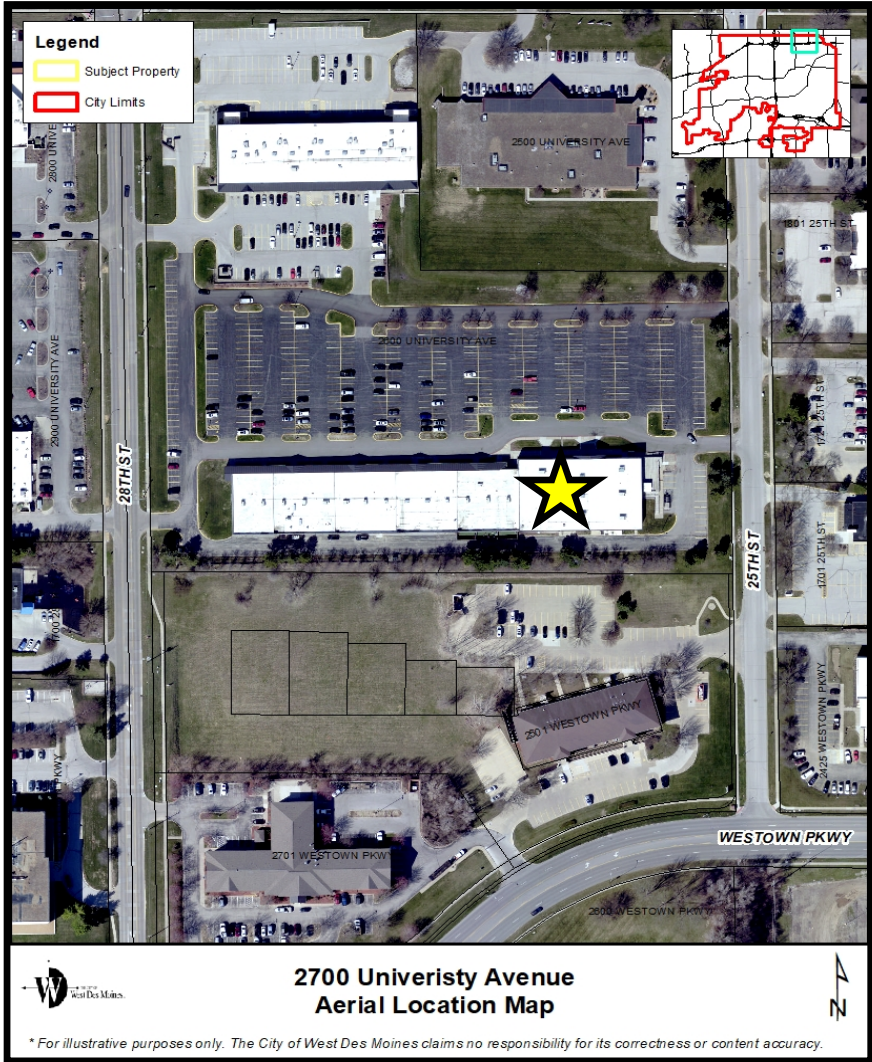
Item h: Mill Ridge Plat 6 Final Plat



Item h: Mill Ridge Plat 6 Final Plat



Item i: *Kaos Club Permitted Conditional Use (Bar/Drinking Place and Event Venue)*



Item i: Kaos Club Permitted Conditional Use (Bar/Drinking Place and Event Venue)

Proposed Conditions of Approval:

1. The Applicant acknowledging and agreeing the establishment shall be closed by 12:00 am (midnight) on Friday and Saturday, and closed by 10:00 pm Sunday through Thursday.
2. The Applicant acknowledging and agreeing the approval for the request is valid only until September 6, 2023. With the approval of the Pc permit valid for one (1) year, it is the applicant's duty to apply for a renewal with sufficient time for consideration by the Board of Adjustment before September 6, 2023.
3. The Applicant acknowledging and agreeing the approval of the Pc permit for the Bar/Restaurant is conditioned upon the Applicant obtaining a valid liquor license.

