

# Welcome to the December 7, 2022, West Des Moines Board of Adjustment Meeting

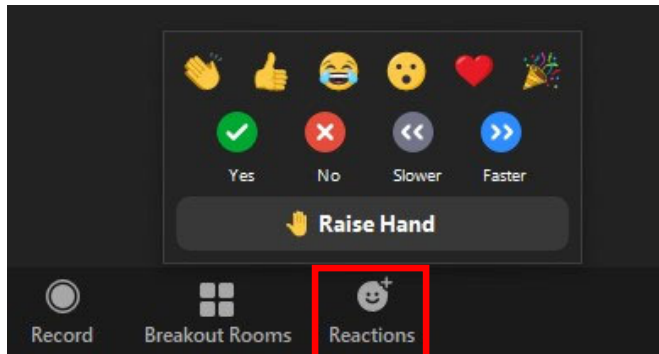
## Here are a few housekeeping items before we get started:

- You will be muted by default when joining the meeting. The Commission Chair will first ask for the applicant's and then staff's presentation on an agenda item. After the applicant and staff have presented, the Chair will ask for public comment. At this point, please raise your hand to indicate you wish to speak. The Chair will then call on you and you will be unmuted.
- **If you are participating by phone, dial \*9 to raise or lower your hand, dial \*6 to unmute or mute**
- **If you are participating by computer or tablet:**



Raise Hand:

Depending on your device, Raise Hand can be found in the Reactions or the More (...) button on the Zoom toolbar:



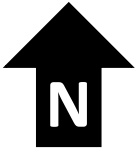
**Item 3a – Dave & Buster’s – 190 S Jordan Creek Pkwy–  
Variance of Maximum Logo Size Allowed**

**To participate on this item:**

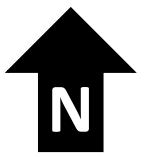
- The Chair will first have the applicant present on the agenda item and will then ask for public comment on the item.
- Please “raise your hand” to indicate that you wish to speak.
- The Chair will then call on you and you will be unmuted.
- **If you are participating by phone, dial \*9 to raise or lower your hand, dial \*6 to mute/unmute**
- Please note, it is entirely at the Chair’s discretion to limit the length of time that individuals may speak, as well as whether to allow individuals to speak a second time.
- When a motion is made and a vote is called for, ONLY the Commission members vote.

**When you are unmuted –  
please state your name and address for the record before you make your comments.**

**Item 3a – Dave & Buster’s**

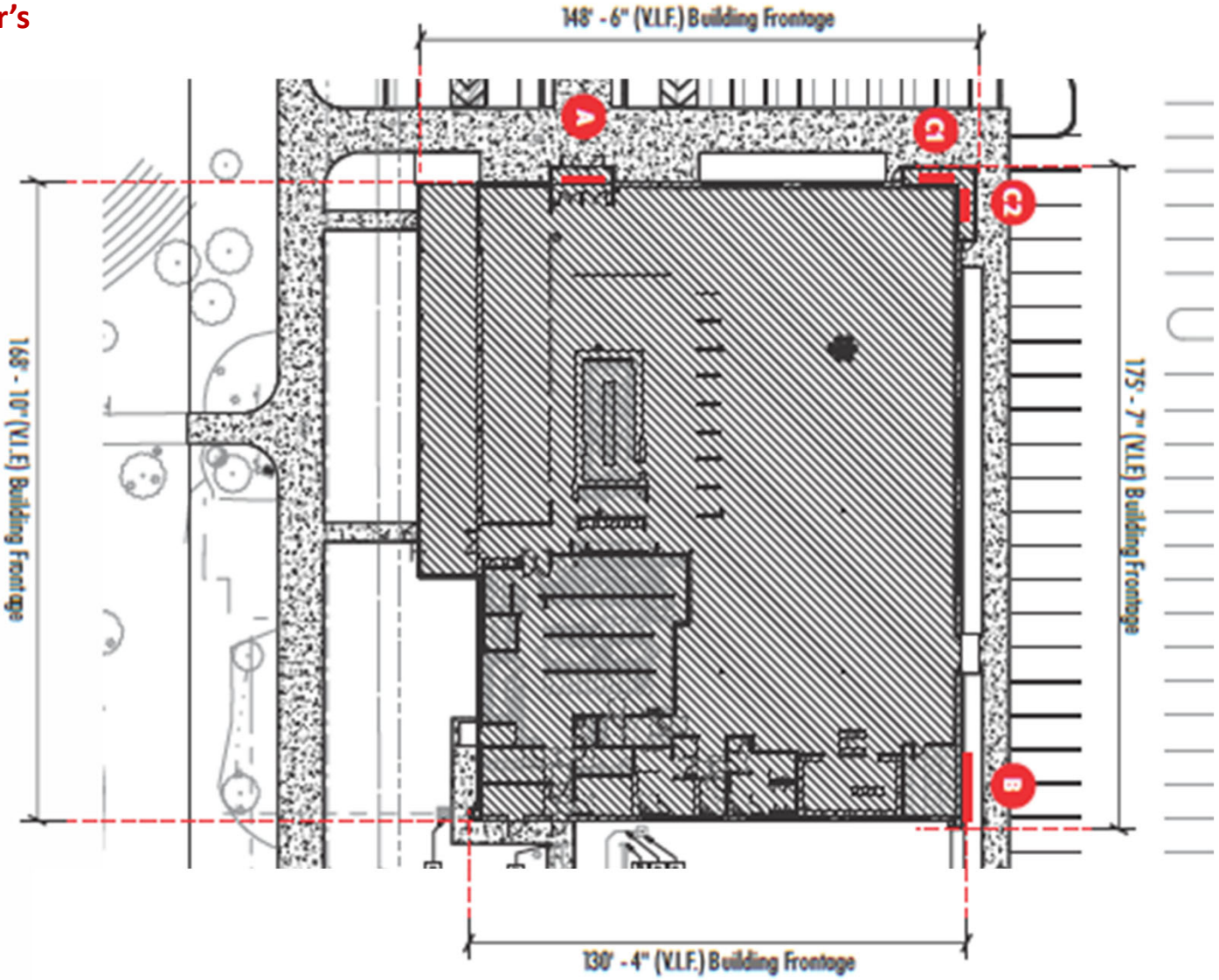


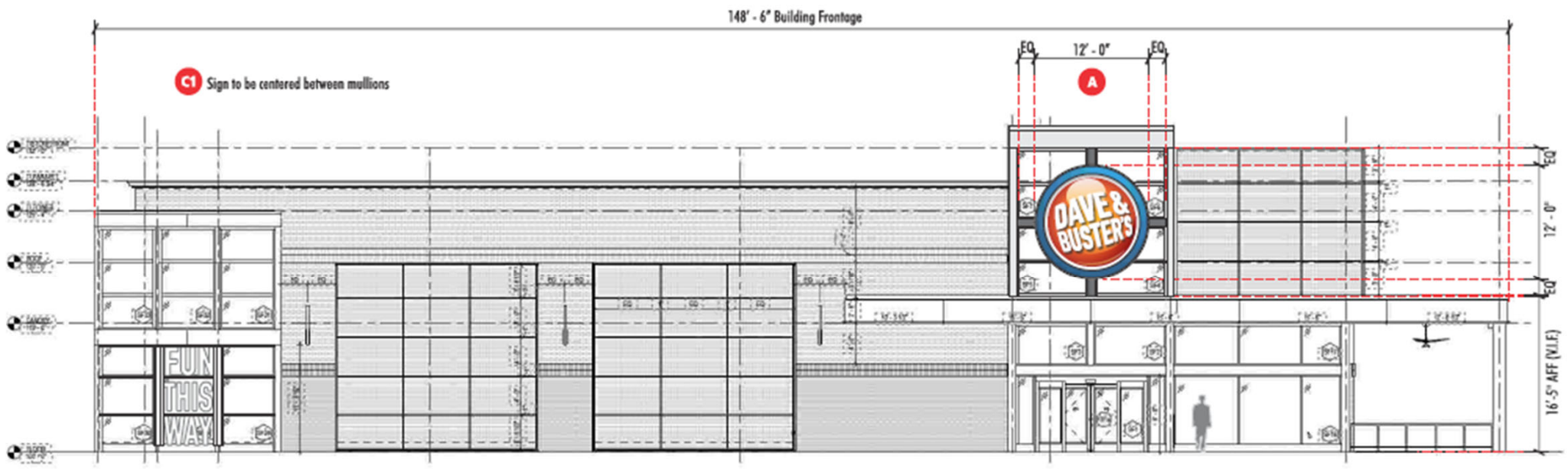
Item 3a – Dave & Buster’s



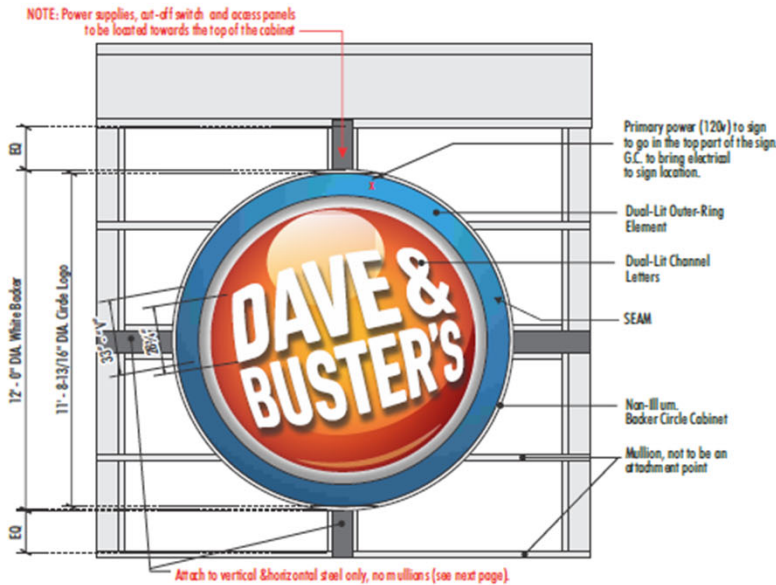


Item 3a – Dave & Buster’s

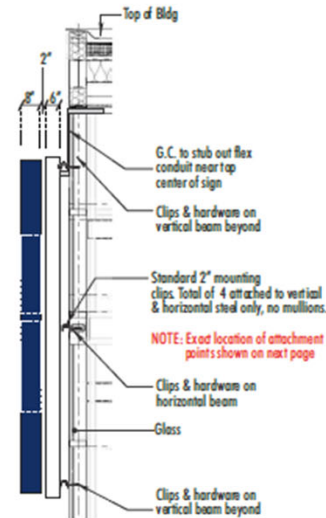
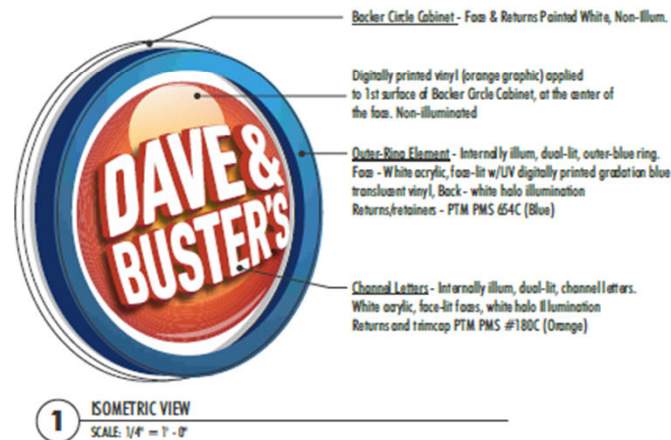




1 NORTH ELEVATION  
SCALE: 1" = 12' - 0"



**A** ELEVATION - FRONT VIEW Qty: One (1)  
SCALE: 1/4" = 1' - 0" Sq. Ft. = 113.09



END VIEW  
NOTE: ALL DRAIN HOLES TO HAVE LIGHT BAFFLES FOR NO LIGHT LEAKS



NIGHT VERSION

**NON-ILLUMINATED BACKER CIRCLE CABINET SPECS**

- Fabricated 6" deep backer circle cabinet, face and returns painted white (satin finish).
- Cabinet to be mounted flush to structure.
- Cabinet to be UL Listed with a Disconnect Switch at top.
- Face and returns to be aluminum.
- Cabinet to house all self-contained 12V power supplies.

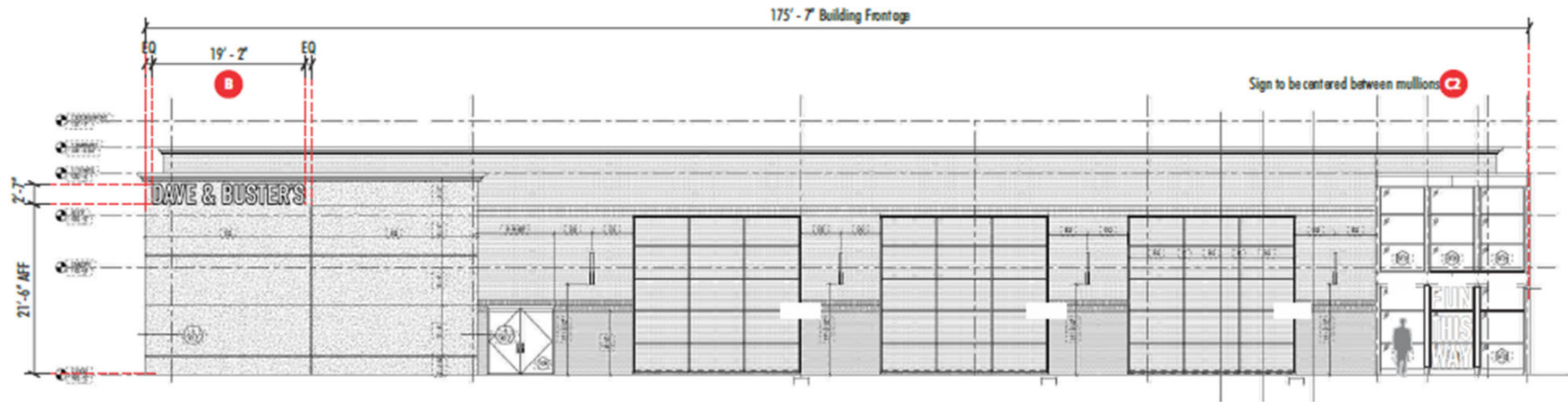
**DUAL-LIT CHANNEL LETTER SPECS (DAVE & BUSTER'S)**

- Fabricated 8" deep, dual-lit, channel letters.
- Letters to be mounted 2" off of white backer cabinet.
- Faces to be White (7328) acrylic.
- Trim and returns to be painted to match Pantone Orange # 180C.
- Illumination to be white LED's.
- Face - Illuminated white
- Backs - Halo lit white
- Backer to be Clear Polycarbonate w/2nd surface white diffuser

**DUAL-LIT OUTER-RING ELEMENT SPECIFICATIONS**

- Fabricated 8" deep, dual-lit, circular channel cabinet ring.
- Outer ring to be mounted 2" off of white backer cabinet.
- Face to be acrylic with 1st surface applied UV digitally printed gradient blue, translucent vinyl (D&B Blue).
- Fabricated aluminum retainer. Retainer on returns to be painted to match PMS Blue # 654C. Face of retainers to have continuation of digitally printed gradient blue translucent vinyl that is on the face.
- Illumination to be White LED's.
- Backer to be clear polycarbonate w/1st surface 3M white diffuser vinyl, applied to inside of channel cabinet ring, for white halo effect





1 EAST ELEVATION  
SCALE: 1" = 15' - 0"

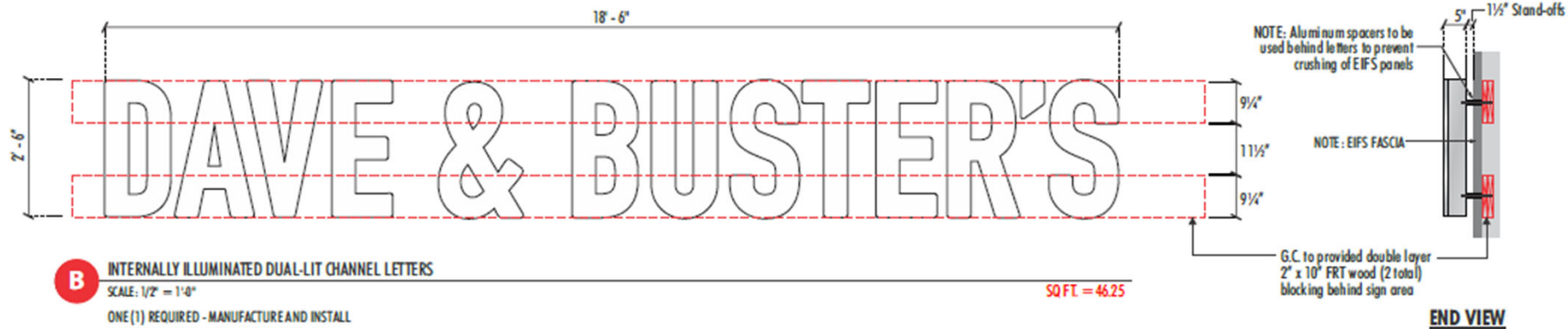


2 SOUTHEAST ELEVATION (NIGHT VIEW) - ARTIST RENDERING  
SCALE: NTS



3 NORTHEAST ELEVATION (NIGHT VIEW) - ARTIST RENDERING  
SCALE: NTS





**B** INTERNALLY ILLUMINATED DUAL-LIT CHANNEL LETTERS

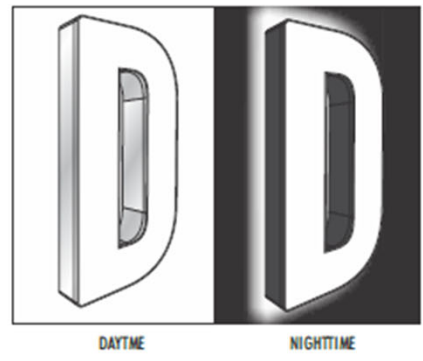
SCALE: 1/2" = 1'-0"

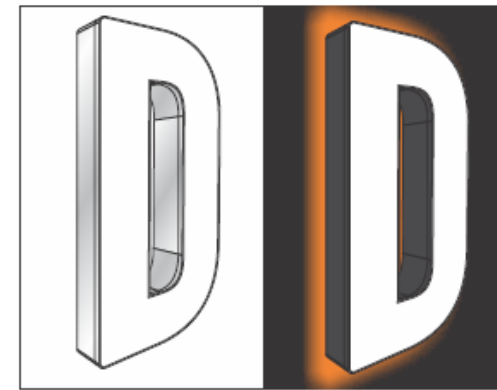
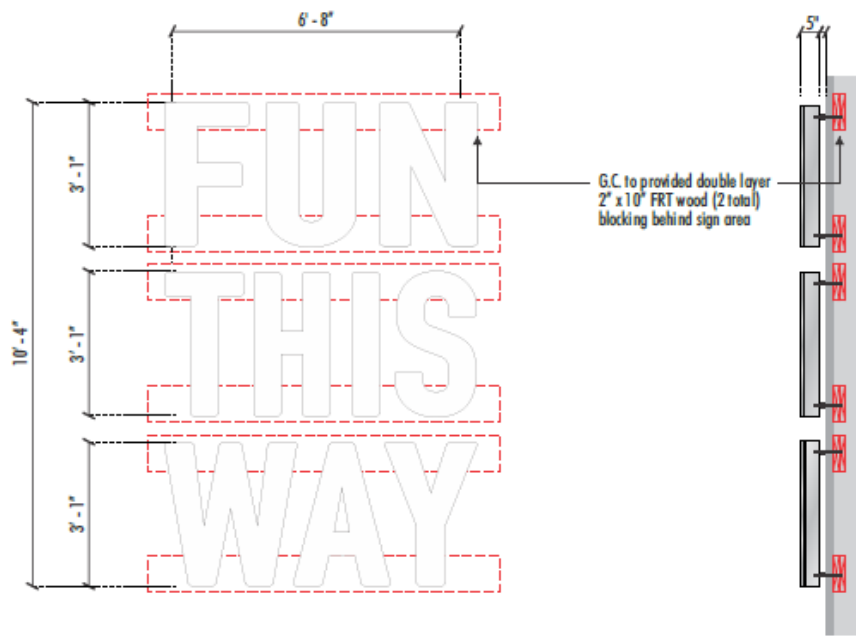
SQ FT = 46.25

ONE (1) REQUIRED - MANUFACTURE AND INSTALL

SPECIFICATIONS

- Fabricated aluminum, 5" deep, internally illuminated dual-lit, channel letters.
- Returns - Brushed Aluminum.
- Aluminum retainer - Silver Metallic.
- Face - White (2406) acrylic
- Backs - Clear polycarbonate w/white diffuser film
- Letters to be internally illuminated with 7100k white LED's.
- Power supply (12v) to be remotely located in LED enclosure box behind EIFS fascia. G.C. to provide access for installation and future servicing.
- Primary power (120v) to sign to be provided by G.C. with 8'-0" leads.
- Letters mounted 1 1/2" off EIFS fascia with aluminum spacers. Spacers painted (Color TBV).
- G.C. to provide adequate wood blocking (2" x 10" FRT wood blocking) for signage





TYPICAL LETTER CONSTRUCTION DAYTIME

TYPICAL LETTER CONSTRUCTION NIGHTTIME

**C1 C2**

**INTERNALLY ILLUMINATED FACE-LIT CHANNEL LETTERS**

SCALE: 3/8" = 1'-0"

SQ. FT. = 68.89 (Ea. Sign)

TWO (2) REQUIRED - MANUFACTURE AND INSTALL

**SPECIFICATIONS**

- Fabricated aluminum, 5" deep, internally illuminated dual-lit, channel letters.
- Returns - Brushed Aluminum.
- Trim cap - Silver Metallic.
- Face - White (2406) acrylic
- Backs - Clear polycarbonate with 1st surface 3M Orange (3630-44) vinyl, applied to the inside of channel letters, for orange halo effect.
- Letters to be internally illuminated with 7100k white LED's.
- Power supply (12v) to be remotely located in LED enclosure box behind fascia. G.C. to provide access for installation and future servicing.
- Primary power (120v) to sign to be provided by G.C. with 8'-0" leads.
- Letters to stand-off 1 1/2" from fascia with aluminum spacers. Spacers painted to match fascia (color TBV) Use non-corrosive mounting hardware (typ).
- G.C. to provide adequate wood blocking (2" x 10" FRT wood blocking) for signage



NIGHT VIEW