

Welcome to the December 19, 2022, WDM Development & Planning Council Subcommittee

Here are a few housekeeping items before we get started:

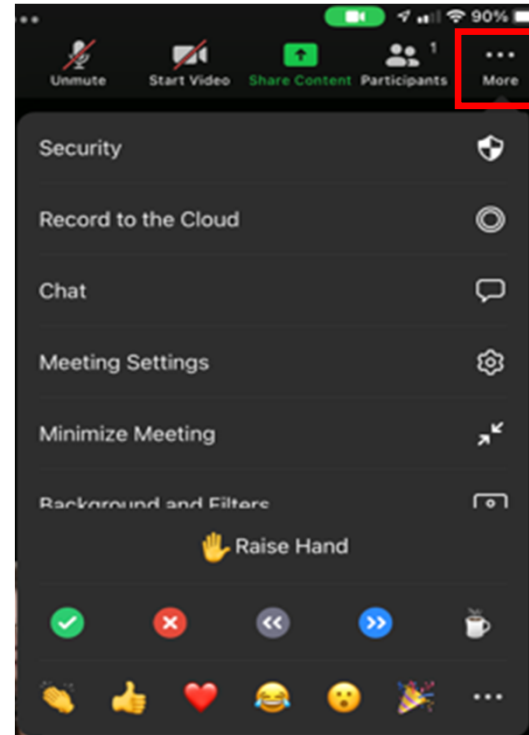
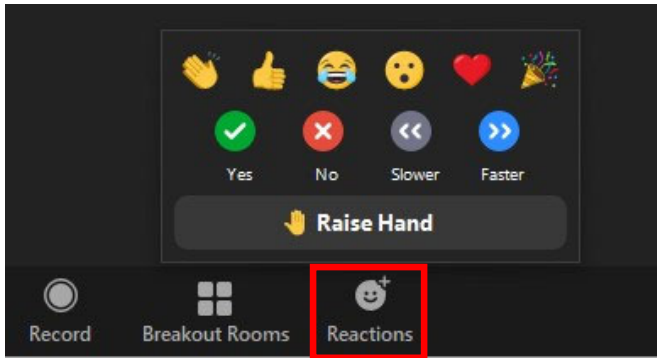
- You will be muted by default when joining the meeting. Staff and the project representatives will explain the item. After both have presented, if you would like to comment, please raise your hand to indicate you wish to speak.
- **If you are participating by phone, dial *9 to raise or lower your hand, dial *6 to unmute or mute**
- **If you are participating by computer or tablet:**

Please state your name and address for the record before you make your comments.



Raise Hand:

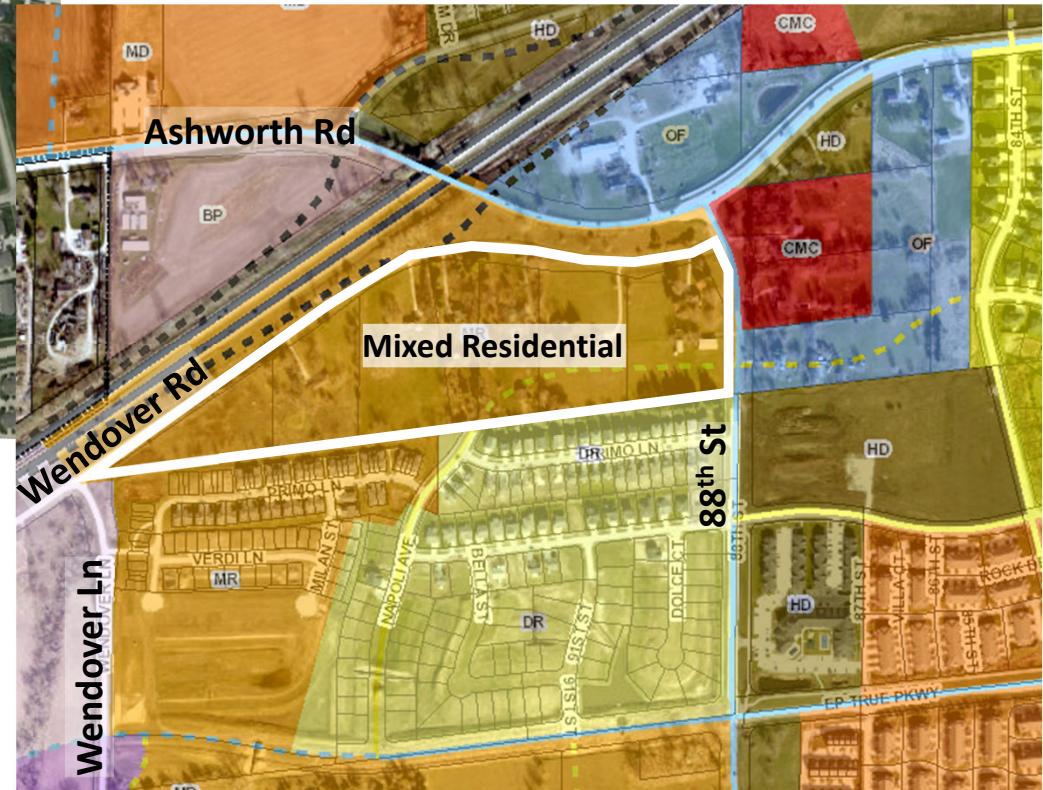
Depending on your device, Raise Hand can be found in the Reactions or the More (...) button on the Zoom toolbar:



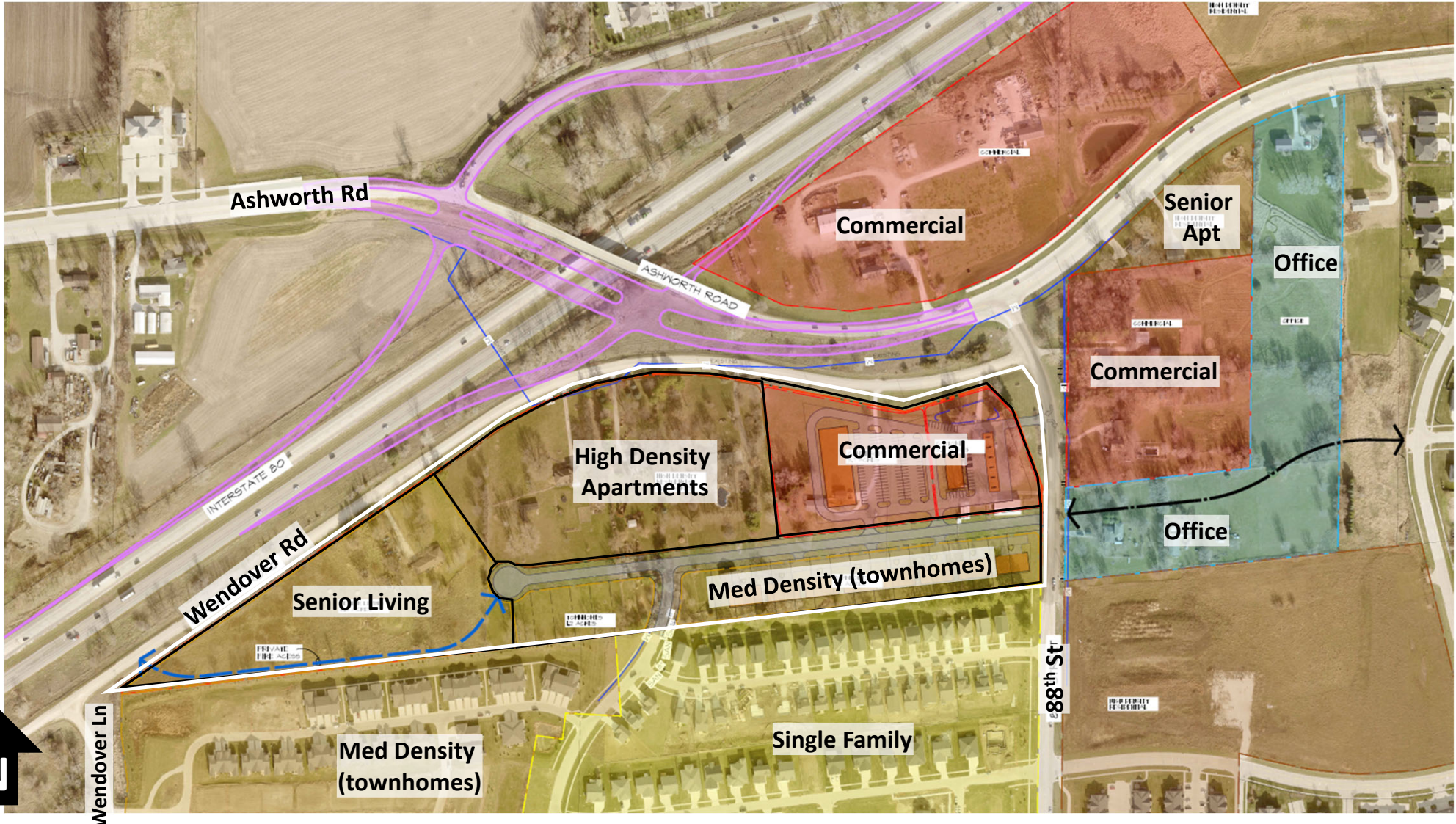
Discussion Item #1: SW Corner Ashworth Rd & 88th St Land Use



- Mixed Residential Land Use allows for:
- Single family detached
 - Medium Density – typ. attached or detached townhomes
 - High Density – typ. apartments

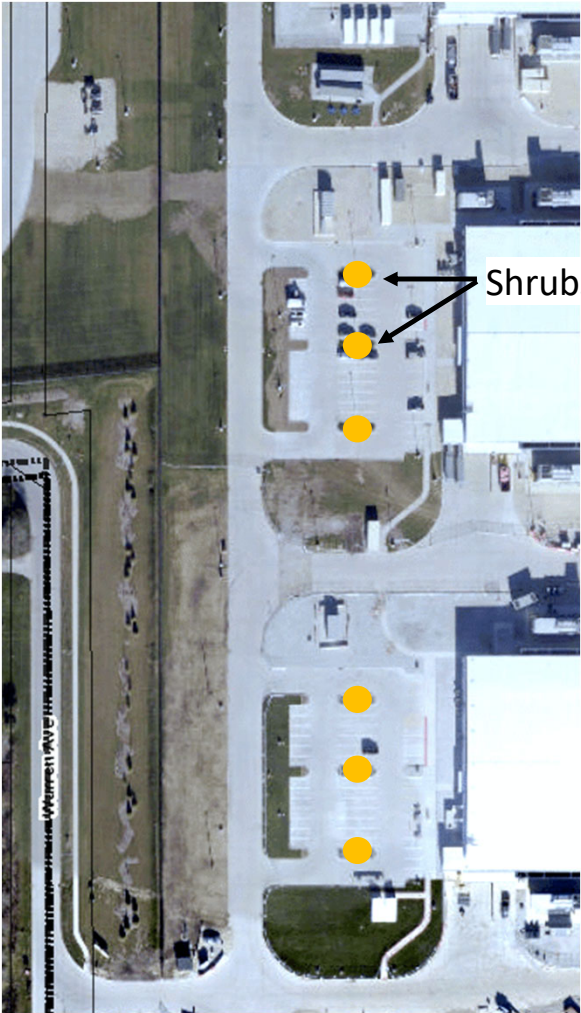


Discussion Item #1: SW Corner Ashworth Rd & 88th St Land Use

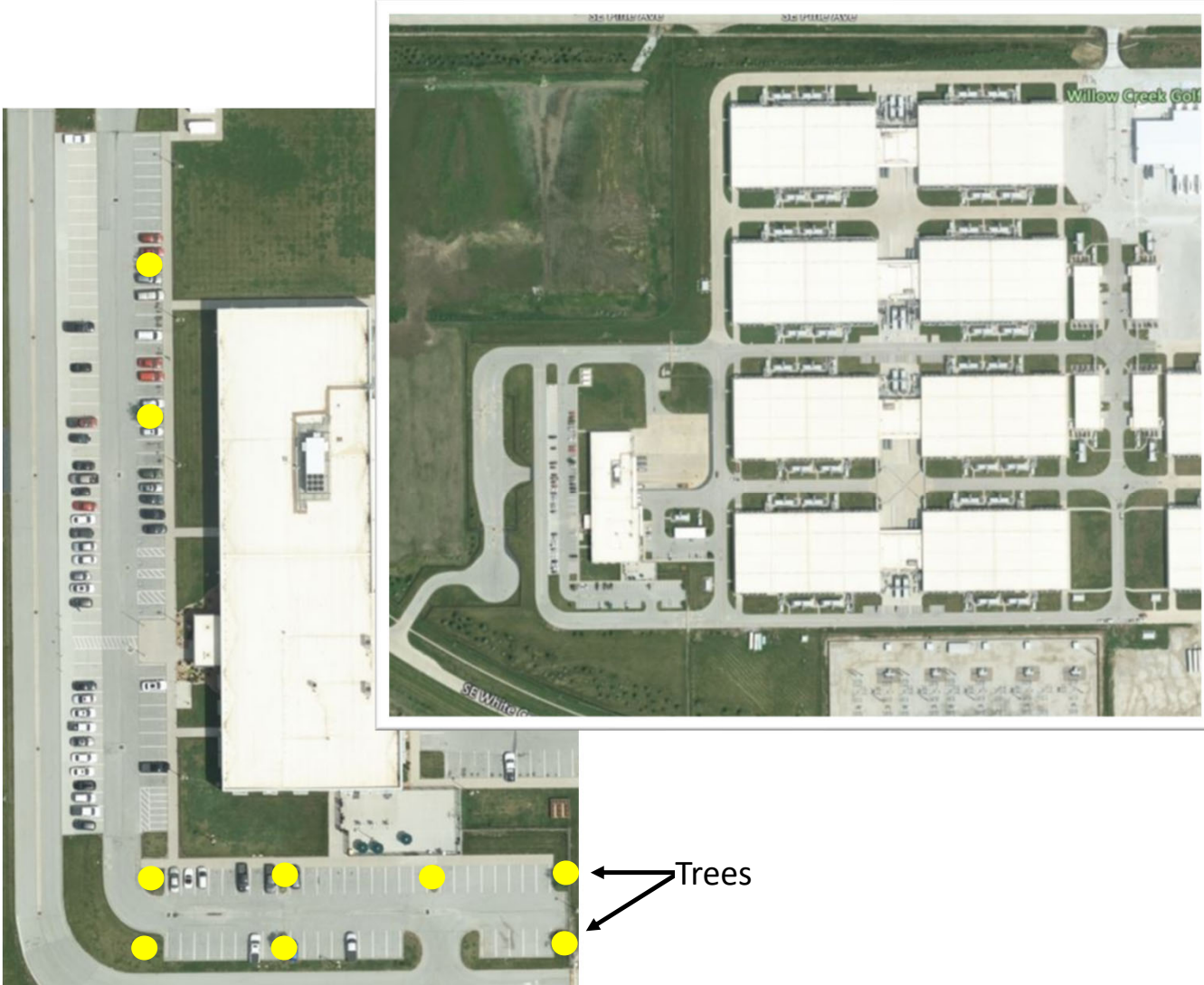


Discussion Item #2: Microsoft Sites

Microsoft Osmium Site – DSM 09, 10, & 11

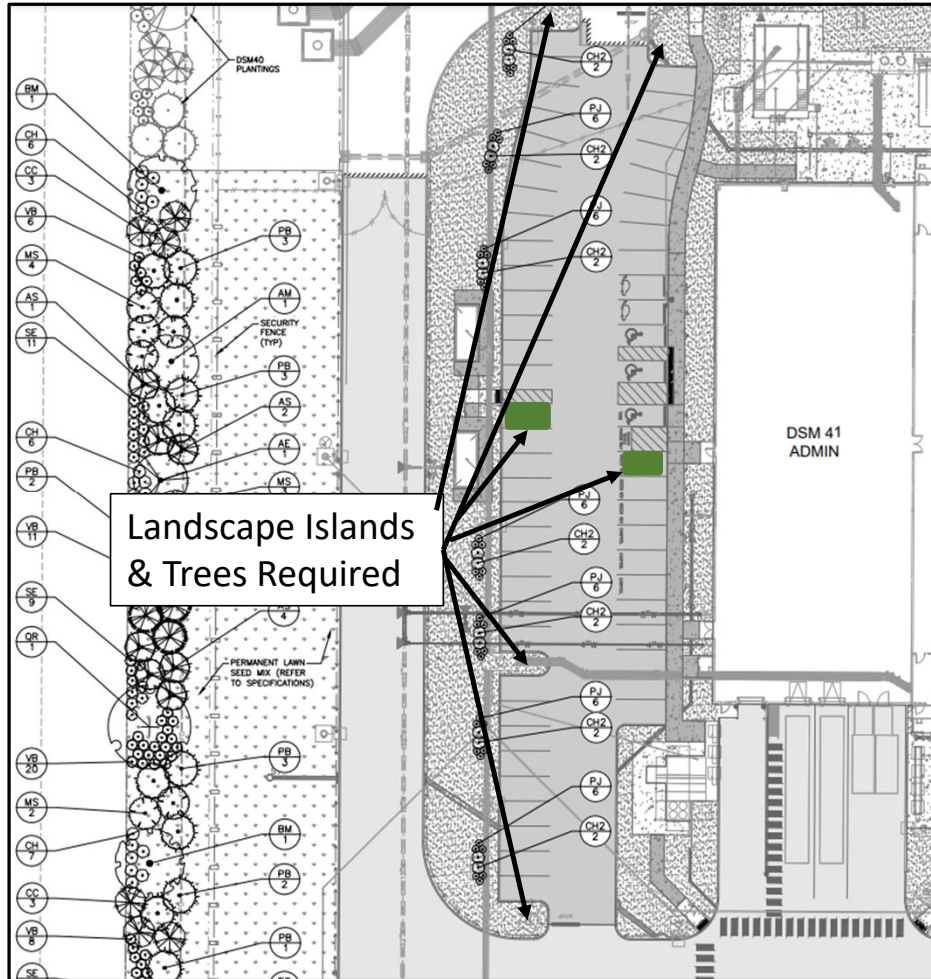


Microsoft Alluvion Site



Discussion Item #2: Microsoft Sites

Ginger West – DSM 41 Landscape Plan



City Code requires minimum 9' X 17' landscape island with a tree every 18 parking spaces in a row and in terminal islands at end of parking rows.

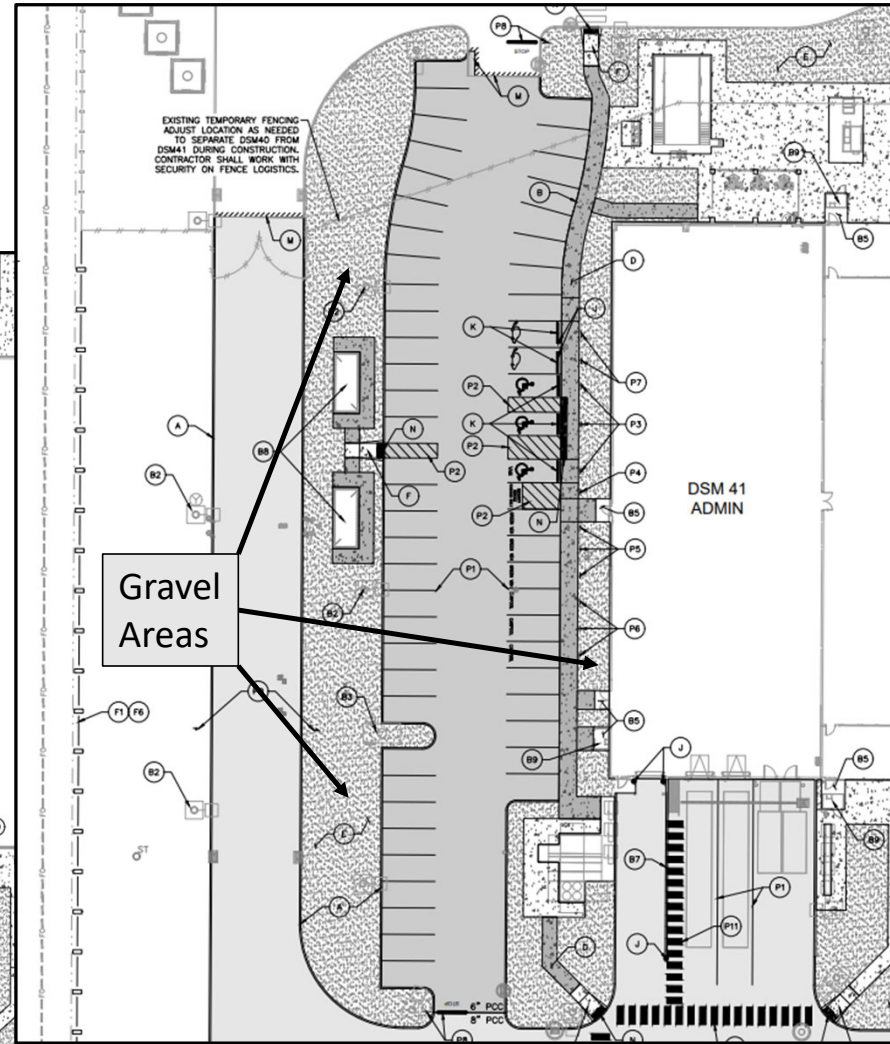
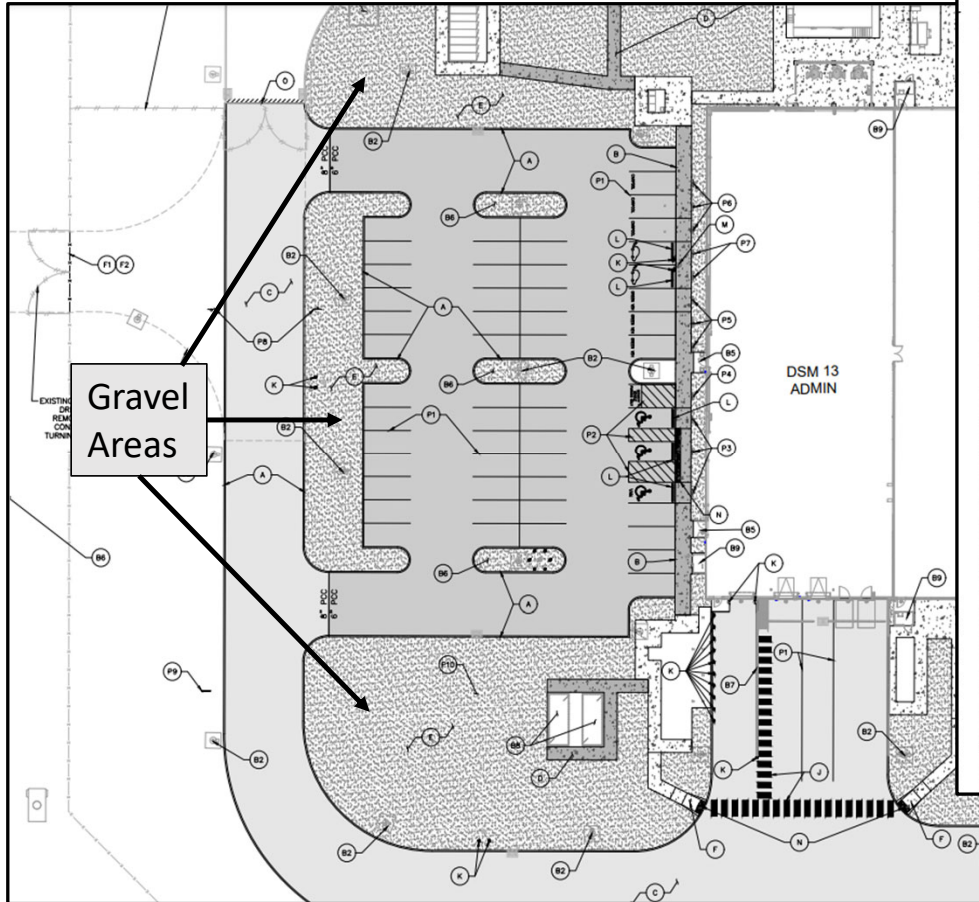
- As proposed, this parking lot is required to have an additional landscape island on each side of the parking lot (green rectangles)
- Trees are needed as noted



Discussion Item #2: Microsoft Sites

City Code states “ All areas of a site not intended for buildings, permanent water bodies, or paved surfaces for off-street parking areas, sidewalks or pedestrian trails shall be vegetated.”

Osmium – DSM 13



Ginger West – DSM 41

Upcoming Projects

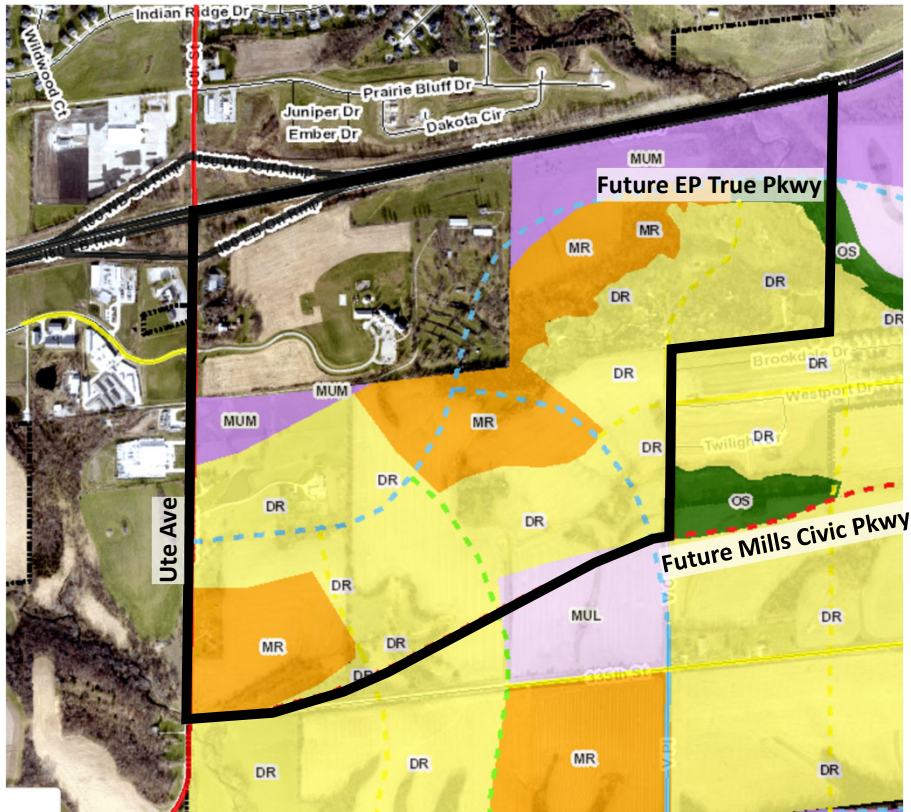
To participate on this item:

- Staff will explain the project.
- Please "raise your hand" to indicate that you wish to speak.
- **If you are participating by phone, dial *9 to raise or lower your hand, dial *6 to mute/unmute**
- **If you are participating by computer or tablet, the raise your hand and mute/unmute functions can be found on the Zoom toolbars**
- Please note, it is entirely at the Chair's discretion to limit the length of time that individuals may speak, as well as whether to allow individuals to speak a second time.

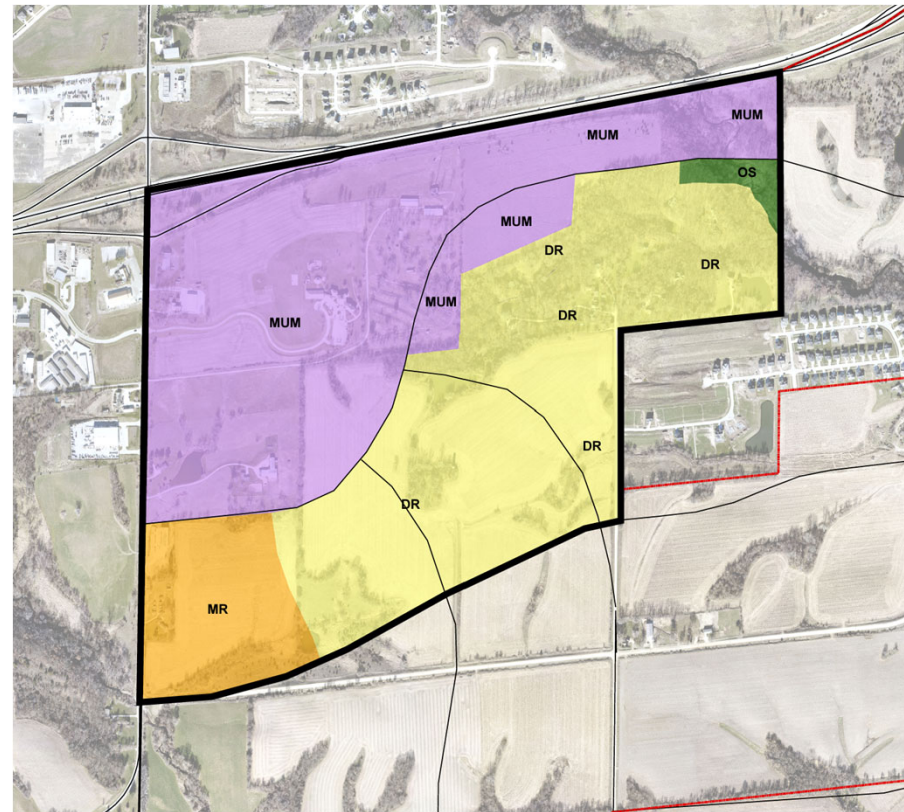
Please state your name and address for the record before you make your comments.

Item a: *Prairie Fire Comprehensive Plan Amendment*

Adopted Land Use

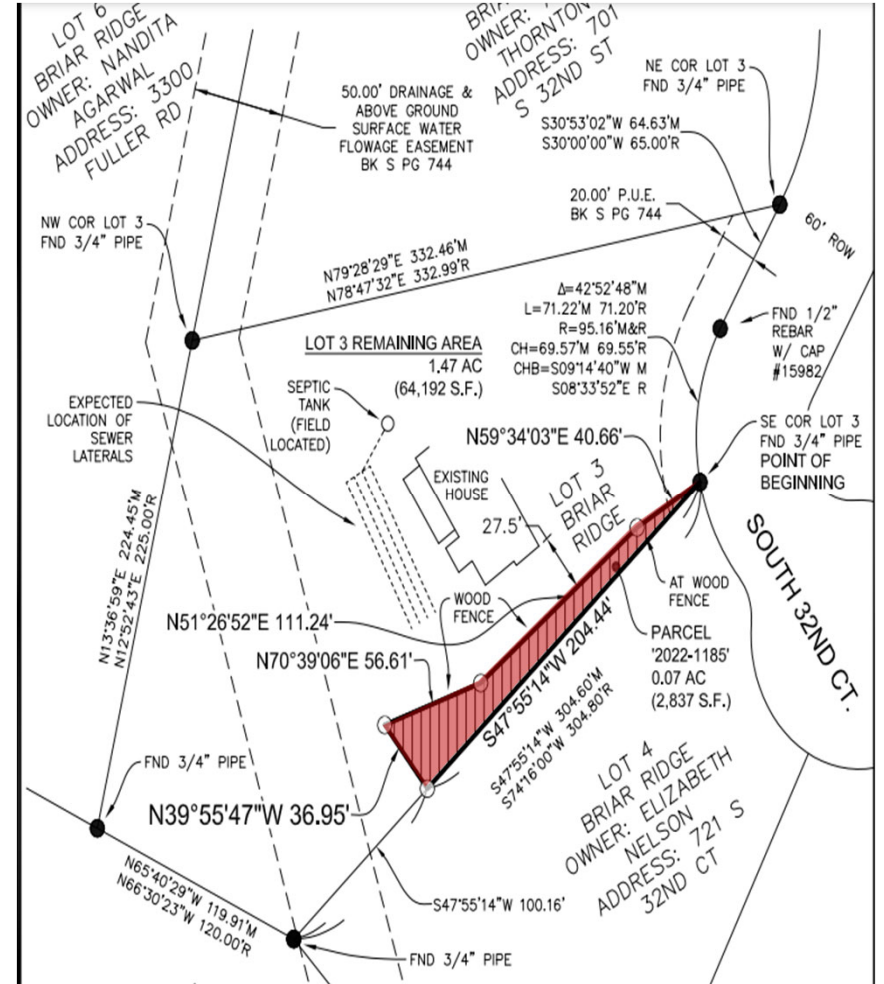


Proposed Land Use



Yellow = Detached Residential (DR)
Orange = Mixed Residential (MR)
Medium Purple = Multi Use Medium (MUM)

Item b: 711 S 32nd Court Plat of Survey



Item c: Stonewood

