

Welcome to the January 23, 2023, WDM Planning and Zoning Commission Meeting

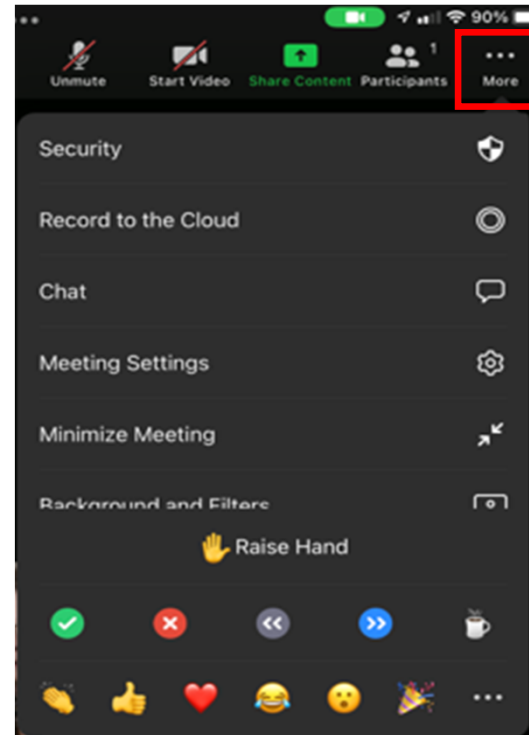
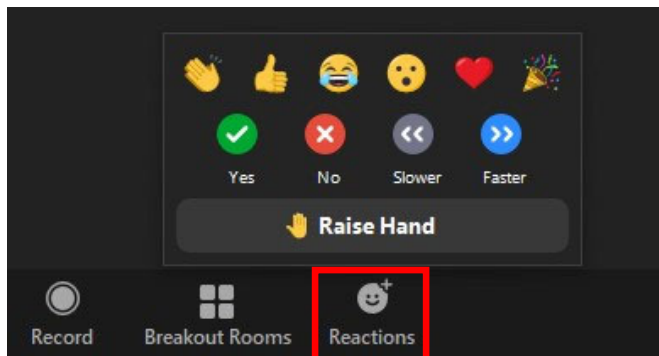
Here are a few housekeeping items before we get started:

- You will be muted by default when joining the meeting. The Commission Chair will first ask for the applicant's and then staff's presentation on an agenda item. After the applicant and staff have presented, the Chair will ask for public comment. At this point, please raise your hand to indicate you wish to speak. The Chair will then call on you and you will be unmuted.
- **If you are participating by phone, dial *9 to raise or lower your hand, dial *6 to unmute or mute**
- **If you are participating by computer or tablet:**



Raise Hand:

Depending on your device, Raise Hand can be found in the Reactions or the More (...) button on the Zoom toolbar:



Item 4 – New Business
4a – Microsoft DSM 41– Approval of a Major Modification

To participate on this item:

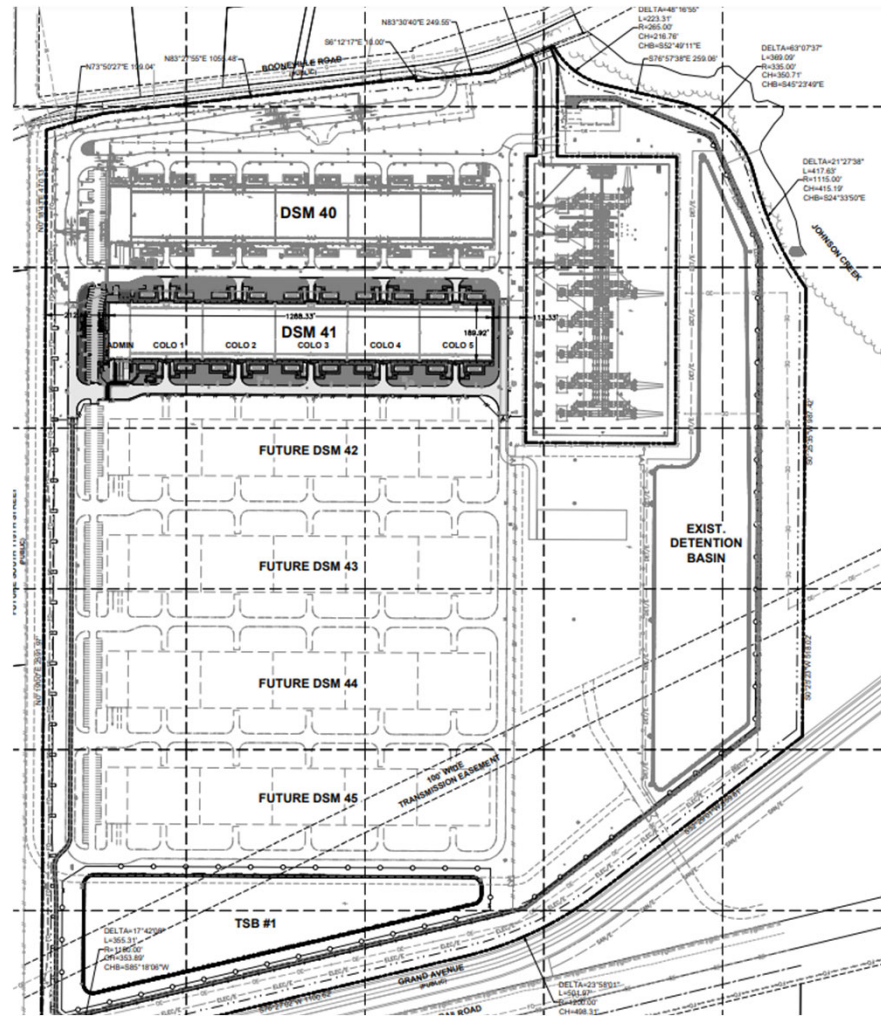
- The Chair will first have the applicant present on the agenda item and will then ask for public comment on the item.
- Please "raise your hand" to indicate that you wish to speak.
- The Chair will then call on you and you will be unmuted.
- **If you are participating by phone, dial *9 to raise or lower your hand, dial *6 to mute/unmute**
- Please note, it is entirely at the Chair's discretion to limit the length of time that individuals may speak, as well as whether to allow individuals to speak a second time.
- When a motion is made and a vote is called for, **ONLY** the Commission members vote.

When you are unmuted – please state your name and address for the record before you make your comments.

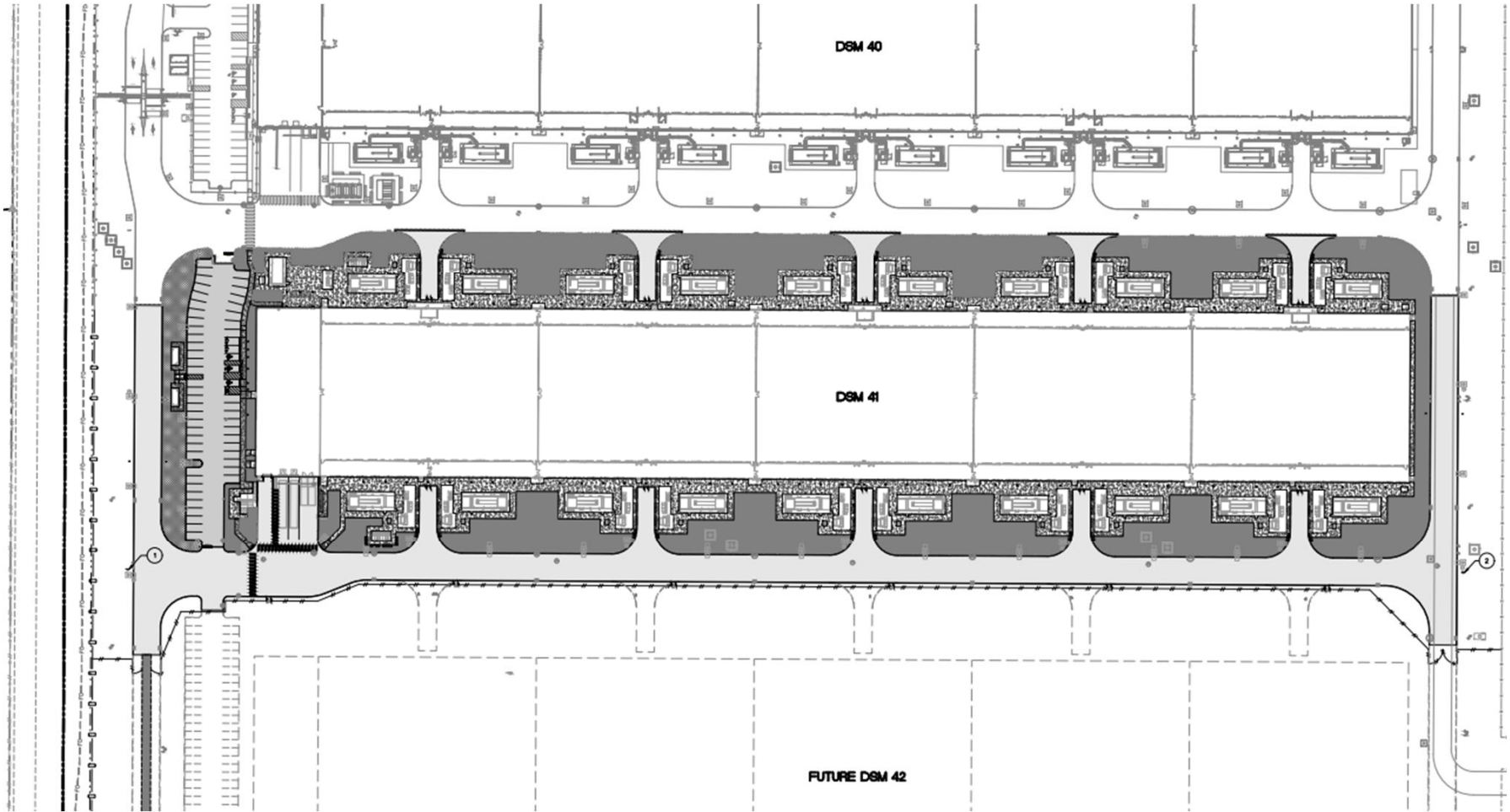
Item 4a – Microsoft DSM 41



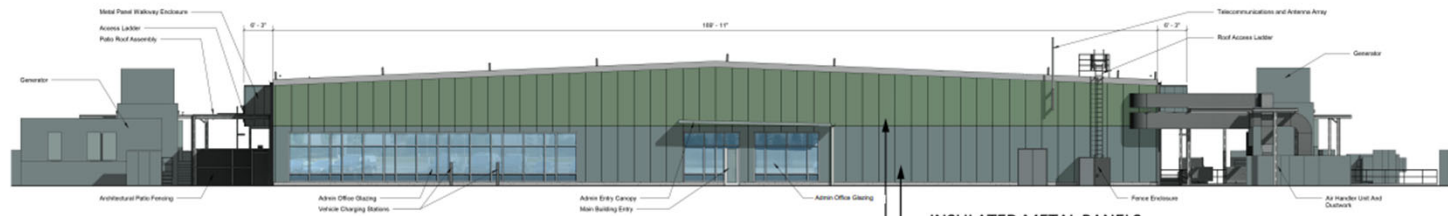
Item 4a – Microsoft DSM 41



Item 4a – Microsoft DSM 41



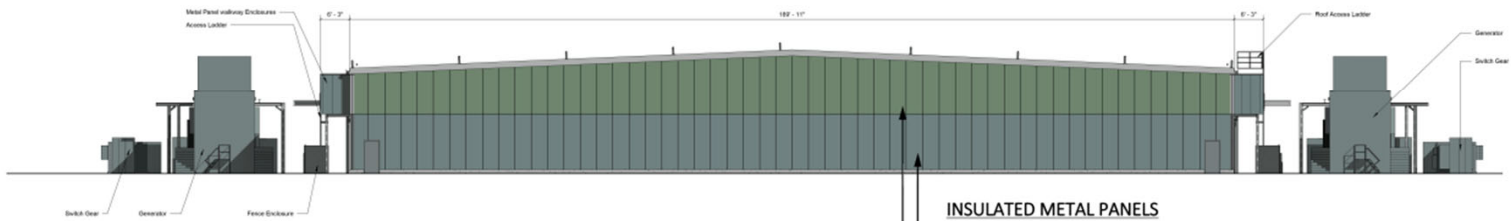
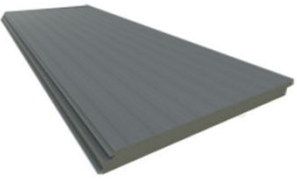
Item 4a – Microsoft DSM 41



1 ARCHITECTURAL EXTERIOR ELEVATIONS - WEST
Scale: 1 INCH = 10 FOOT

INSULATED METAL PANELS

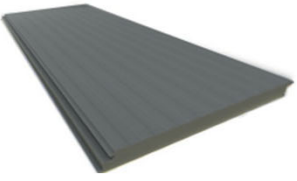
- Pearl Grey
- Natural Green



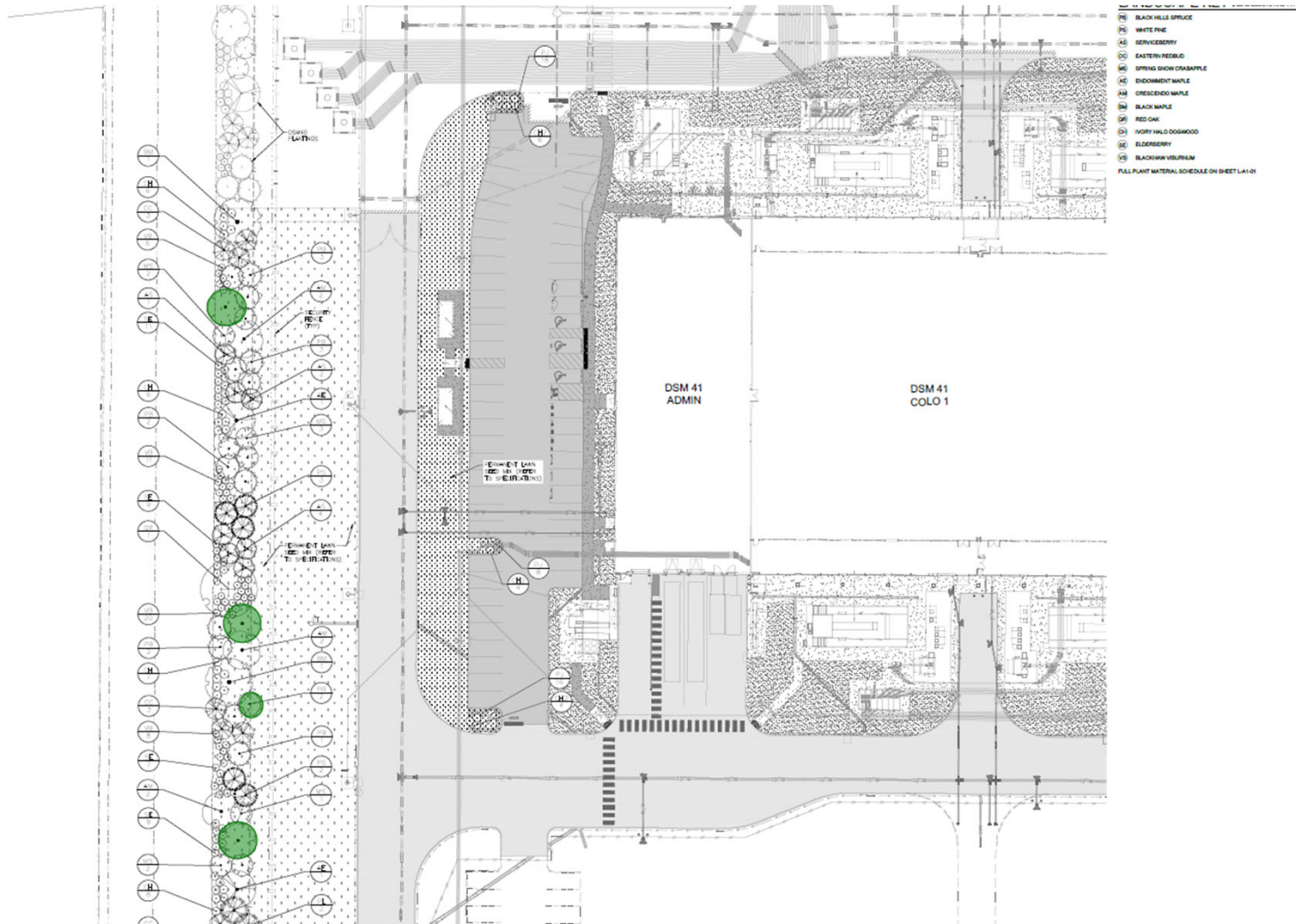
2 ARCHITECTURAL EXTERIOR ELEVATIONS - EAST
Scale: 1 INCH = 10 FOOT

INSULATED METAL PANELS

- Pearl Grey
- Natural Green



Item 4a – Microsoft DSM 41



Item 4 – New Business
4b – Microsoft DSM 13– Approval of a Major Modification

To participate on this item:

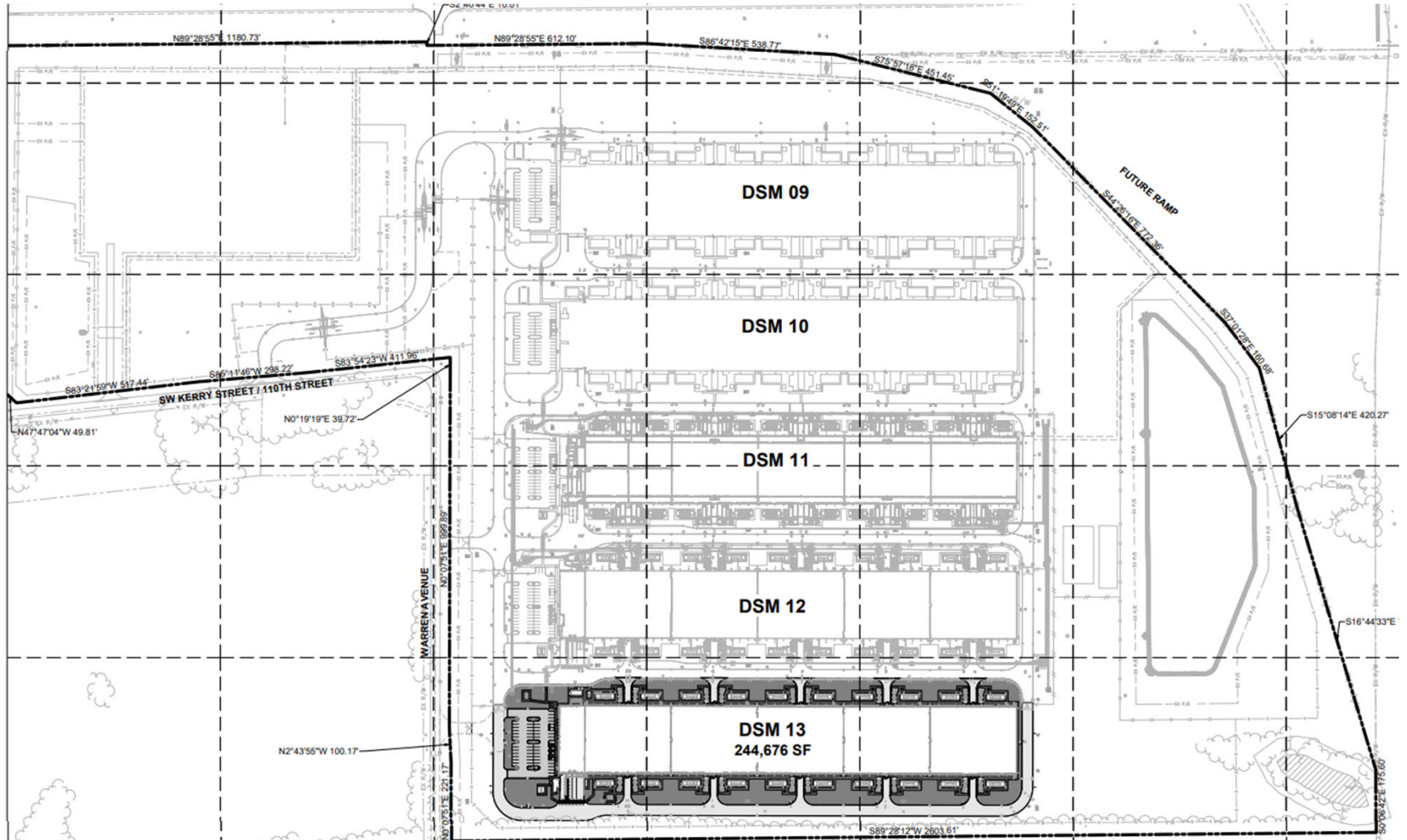
- The Chair will first have the applicant present on the agenda item and will then ask for public comment on the item.
- Please "raise your hand" to indicate that you wish to speak.
- The Chair will then call on you and you will be unmuted.
- **If you are participating by phone, dial *9 to raise or lower your hand, dial *6 to mute/unmute**
- Please note, it is entirely at the Chair's discretion to limit the length of time that individuals may speak, as well as whether to allow individuals to speak a second time.
- When a motion is made and a vote is called for, **ONLY** the Commission members vote.

When you are unmuted – please state your name and address for the record before you make your comments.

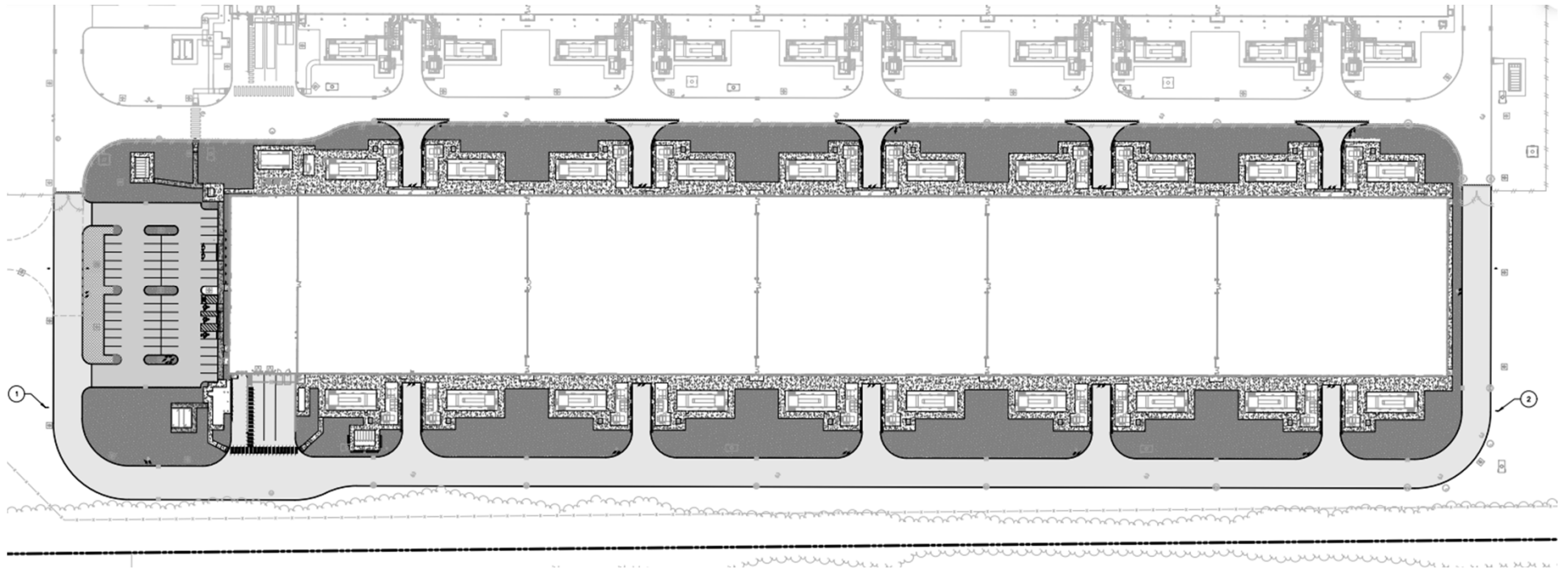
Item 4b – Microsoft DSM 13



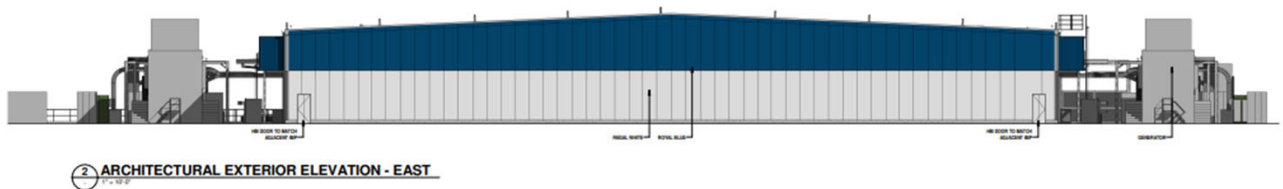
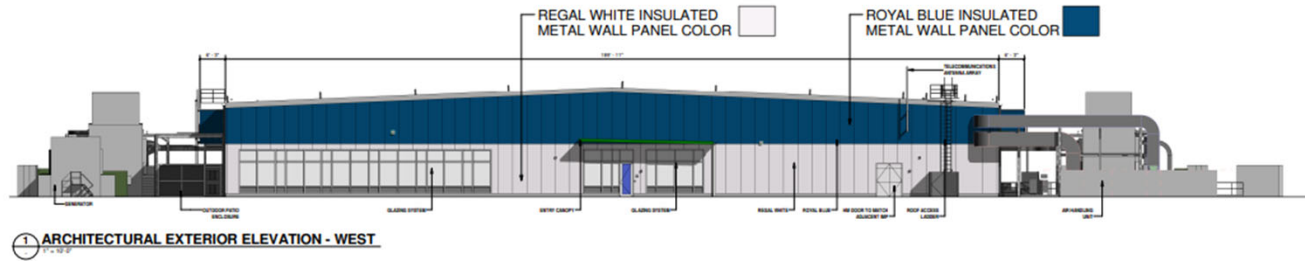
Item 4b – Microsoft DSM 13



Item 4b – Microsoft DSM 13



Item 4b – Microsoft DSM 13



Item 4b – Microsoft DSM 13

