

Welcome to the August 7, 2023, WDM Development & Planning Council Subcommittee

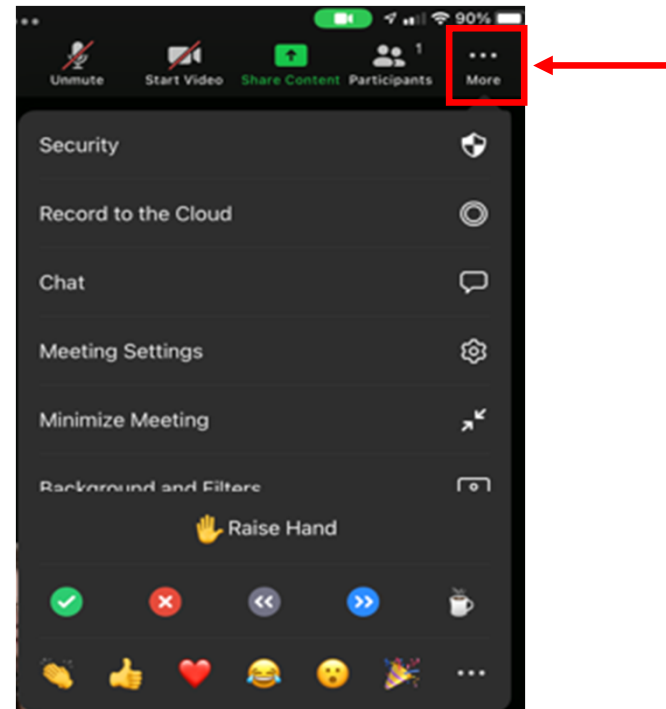
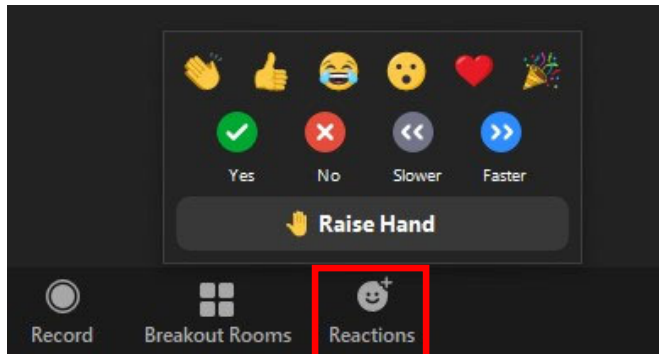
Here are a few housekeeping items before we get started:

- You will be muted by default when joining the meeting.
- If you would like to comment, please raise your hand to indicate you wish to speak. The Subcommittee Chair will then call on you and you will be unmuted.
- **If you are participating by phone, dial *9 to raise or lower your hand, dial *6 to unmute or mute**
- **If you are participating by computer or tablet:**



Raise Hand:

Depending on your device, Raise Hand can be found in the Reactions or the More (...) button on the Zoom toolbar:



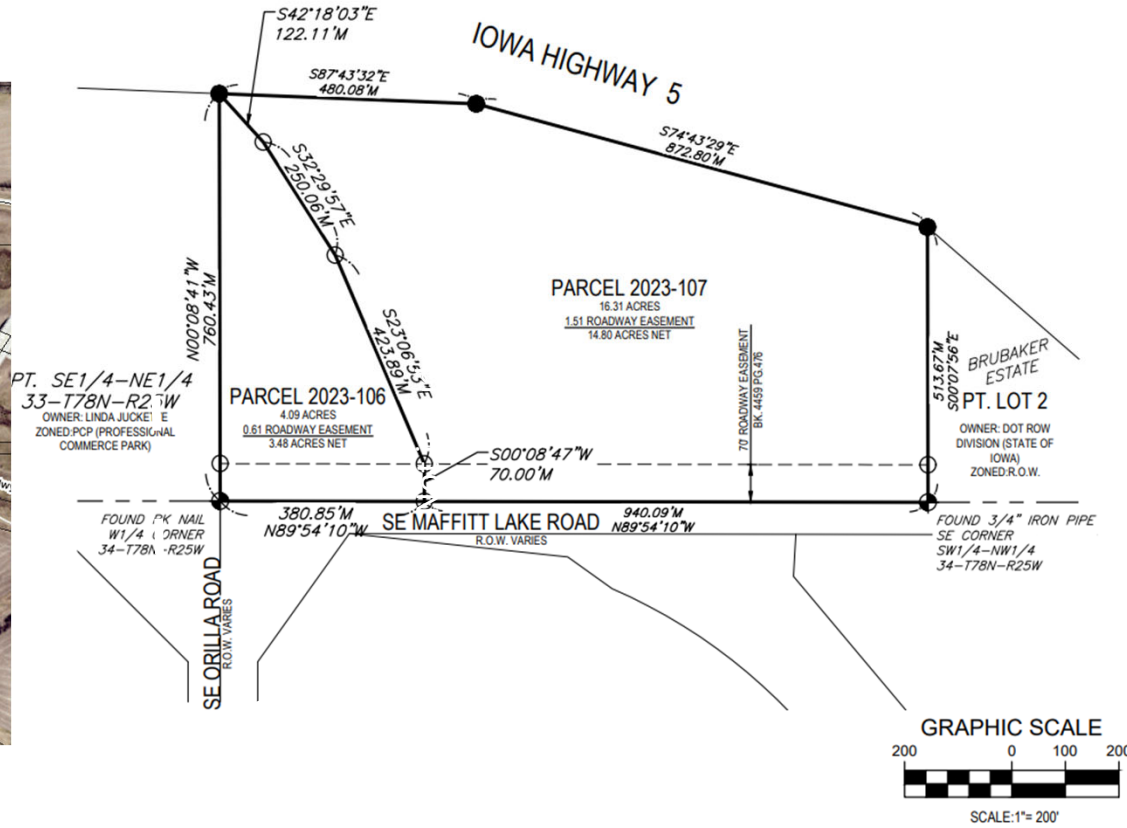
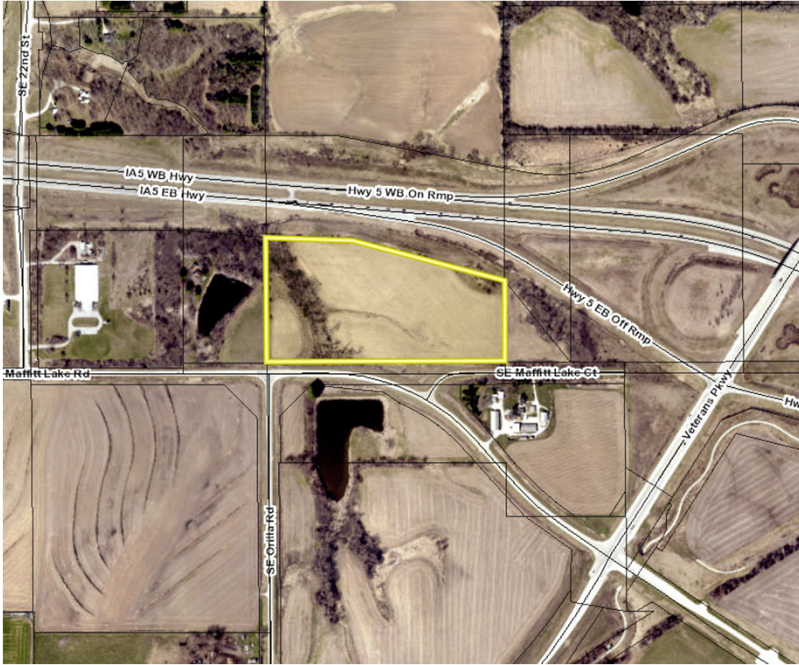
Upcoming Projects

To participate on this item:

- The Subcommittee Chair will first have staff present explain the project.
- Please "raise your hand" to indicate that you wish to speak.
- The Chair will then call on you and you can unmute.
- **If you are participating by phone, dial *9 to raise or lower your hand, dial *6 to mute/unmute**
- **If you are participating by computer or tablet, the raise your hand and mute/unmute functions can be found on the Zoom toolbars**
- Please note, it is entirely at the Chair's discretion to limit the length of time that individuals may speak, as well as whether to allow individuals to speak a second time.

When you unmute – please state your name and address for the record before you make your comments.

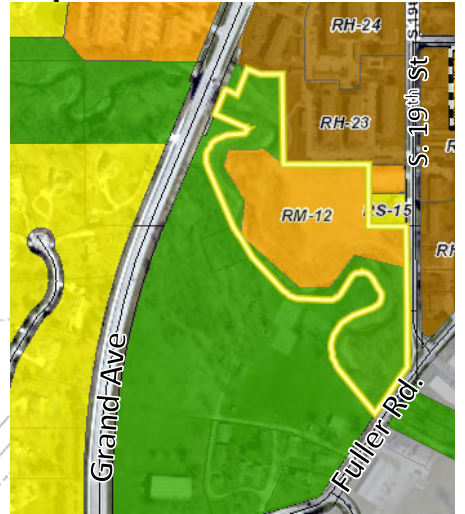
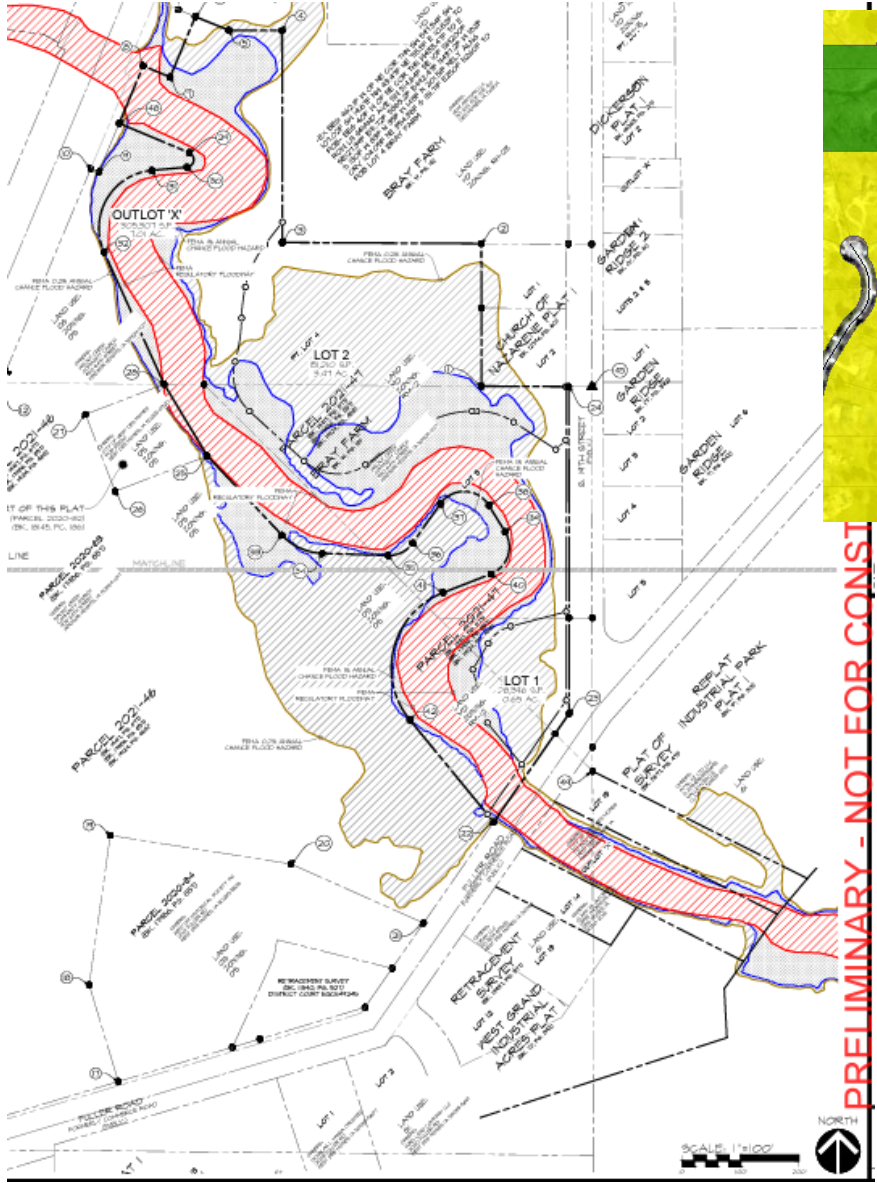
Item a: Juckette Plat of Survey



Item b: Bridge Lot Preliminary Plat

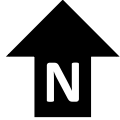
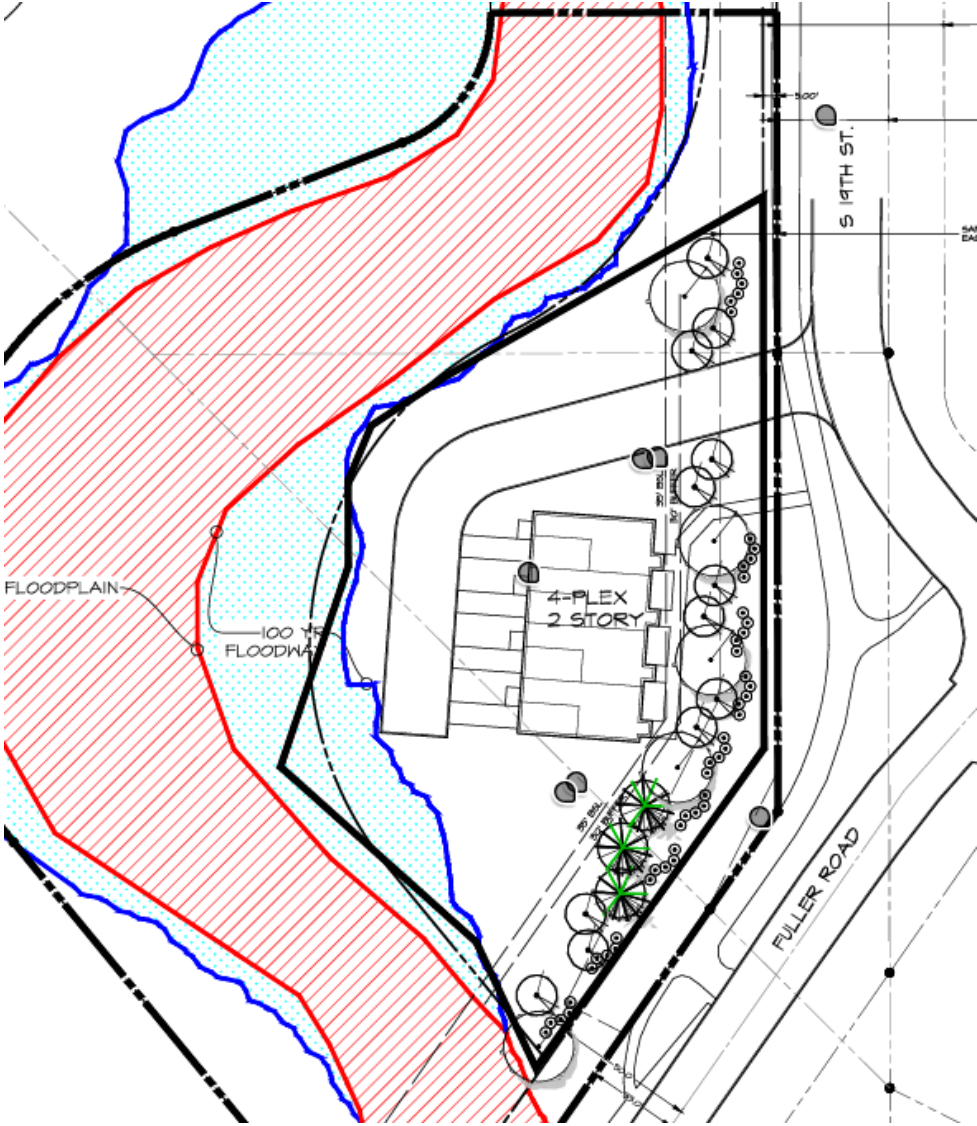
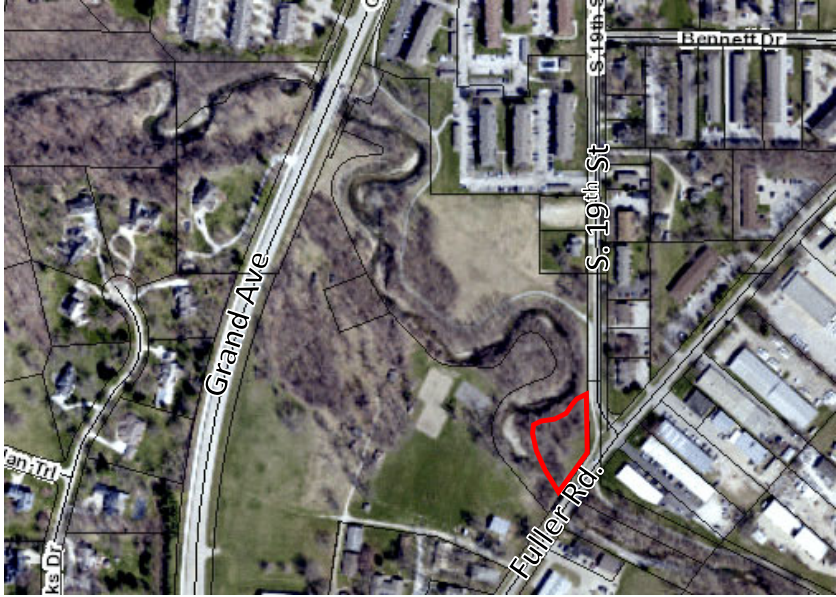


Item b: Bridge Lot Preliminary Plat

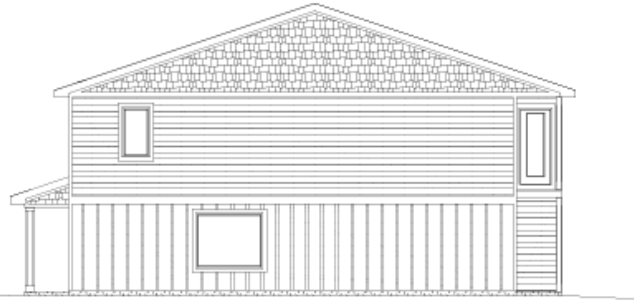


PRELIMINARY - NOT FOR CONSTRUCTION

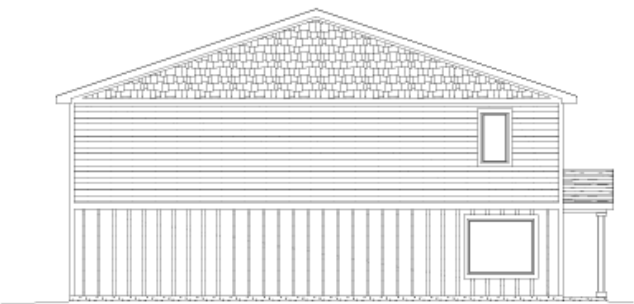
Item c: Bridge Lot Site Plan



Item c: Bridge Lot Site Plan



RIGHT ELEVATION



LEFT ELEVATION

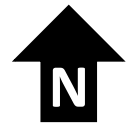


REAR ELEVATION

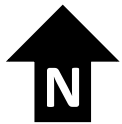
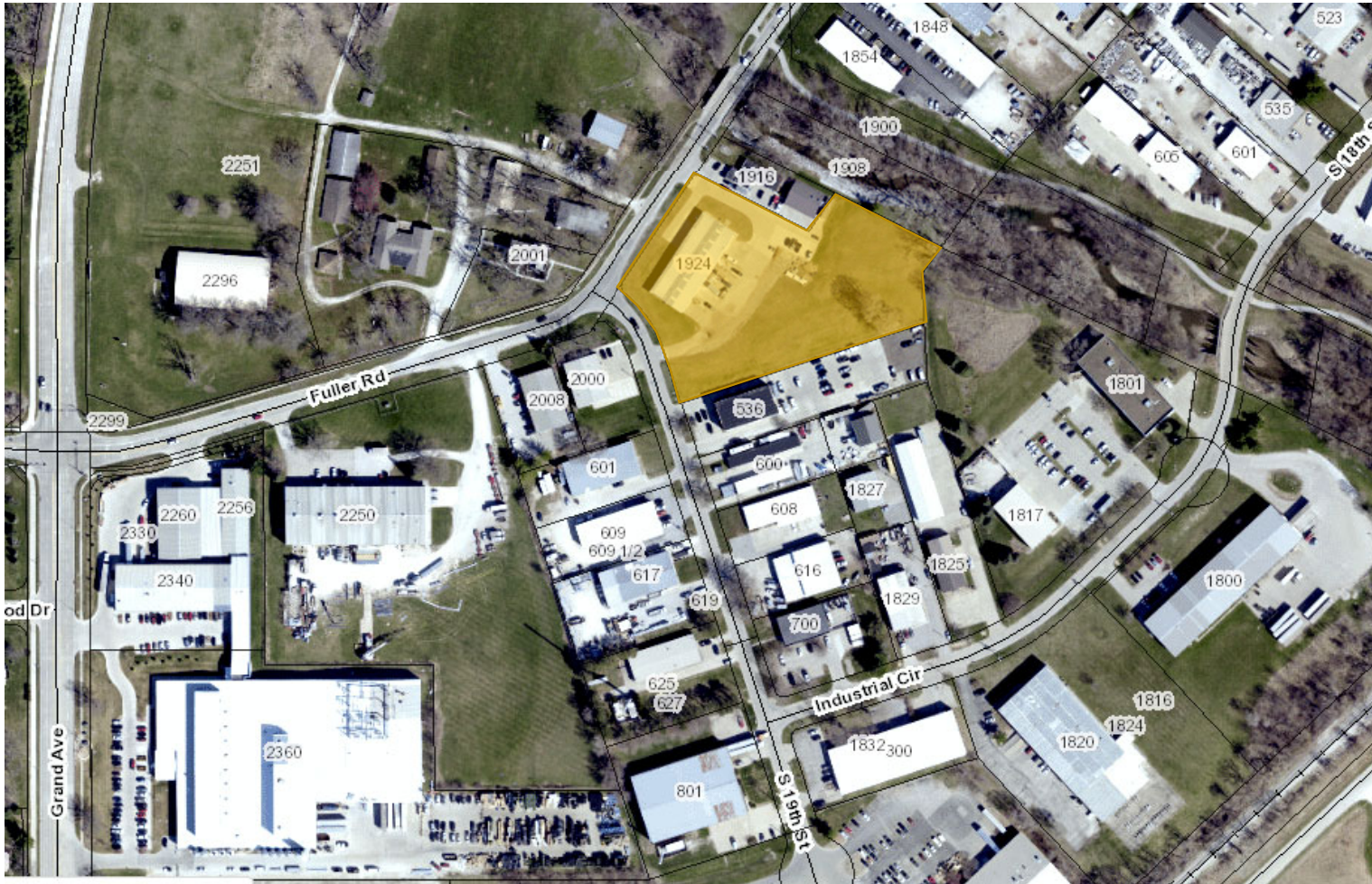


FRONT ELEVATION

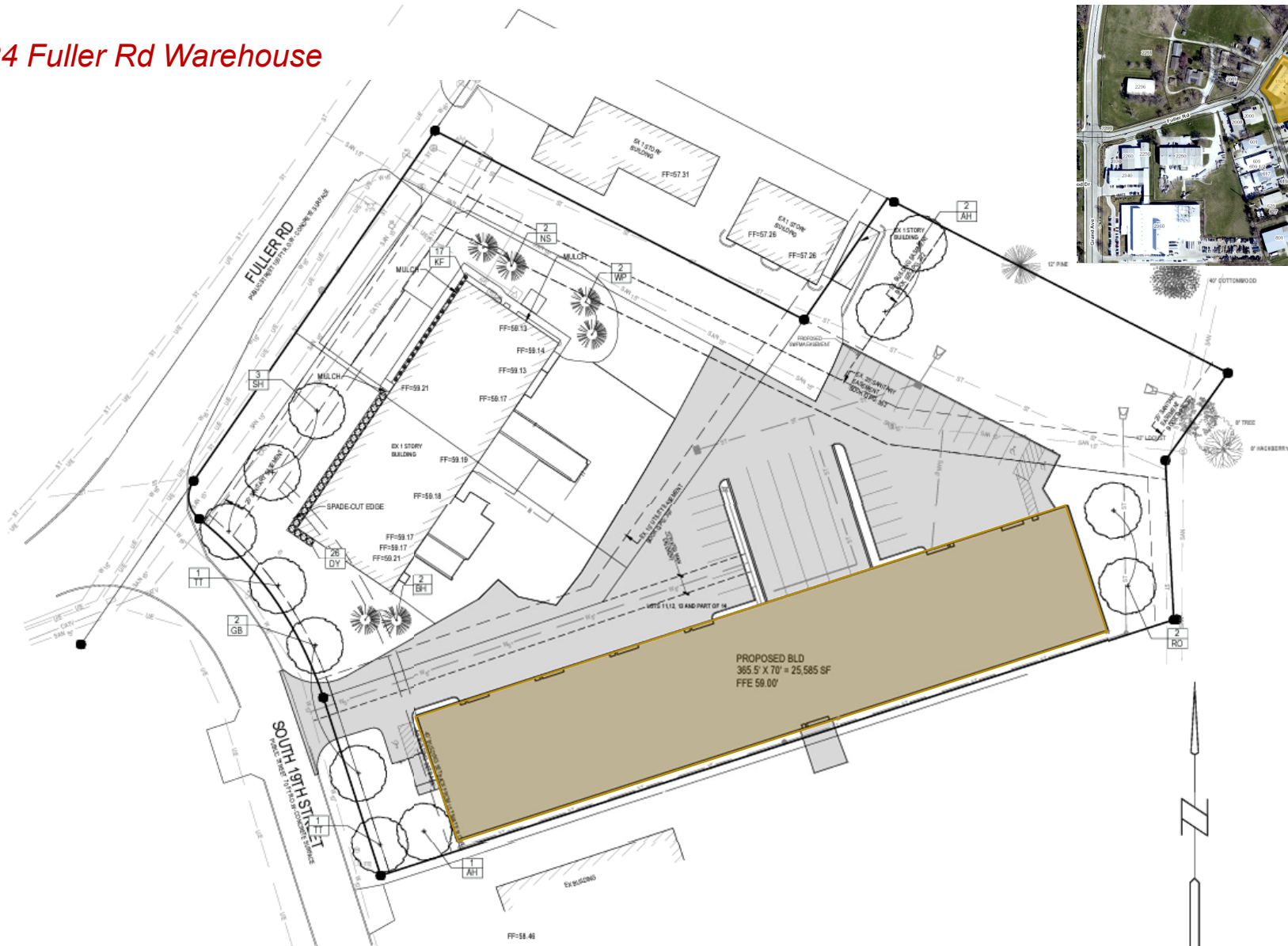
4" corner trim and window trim



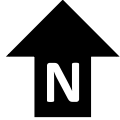
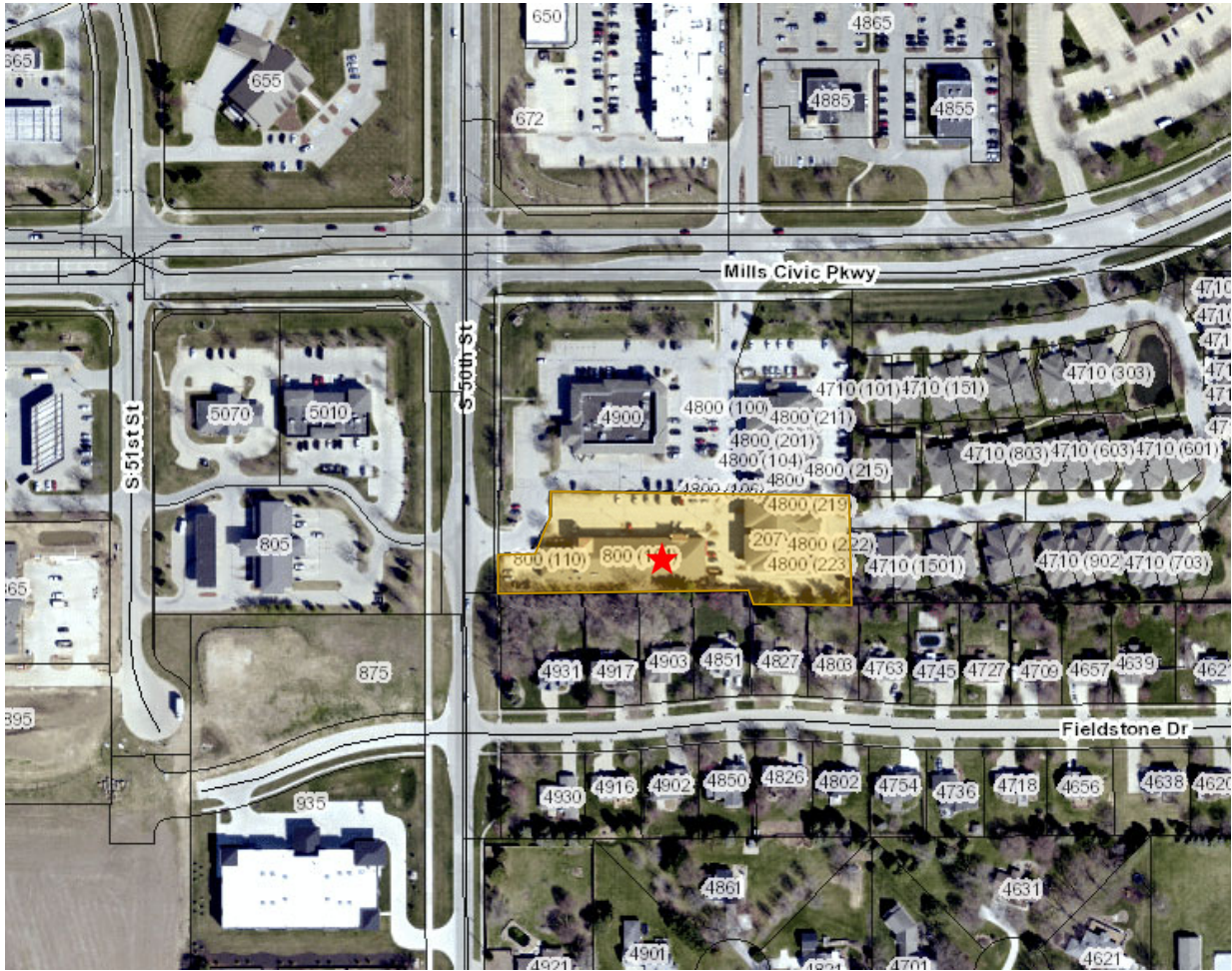
Item d: 1924 Fuller Rd Warehouse



Item d: 1924 Fuller Rd Warehouse



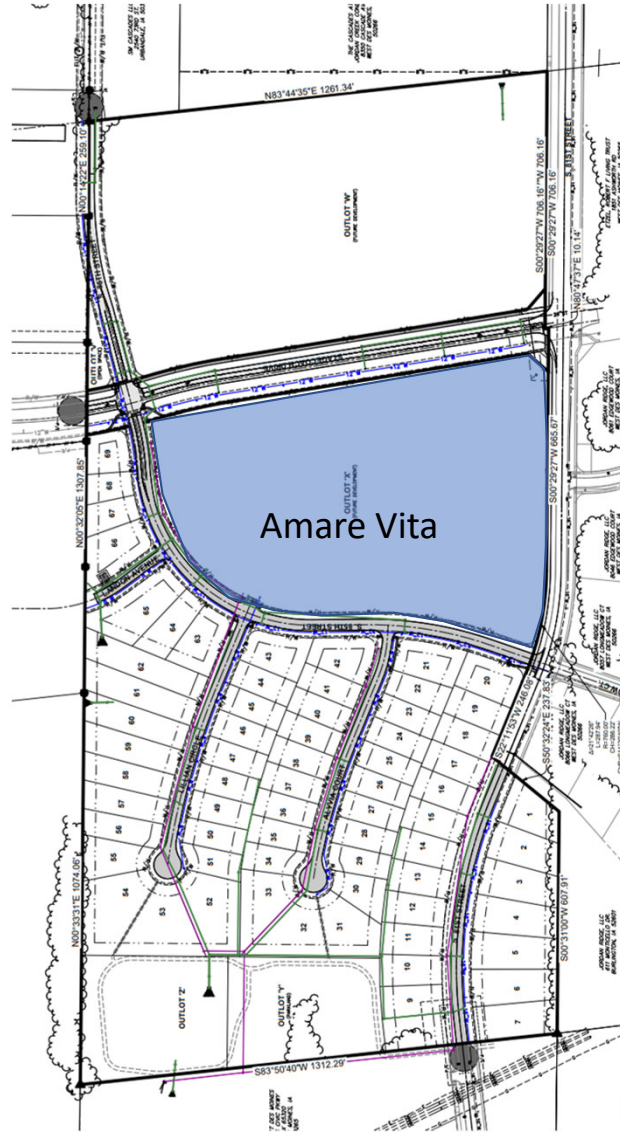
Item e: *Fur Baby Bubbles Dog Daycare*



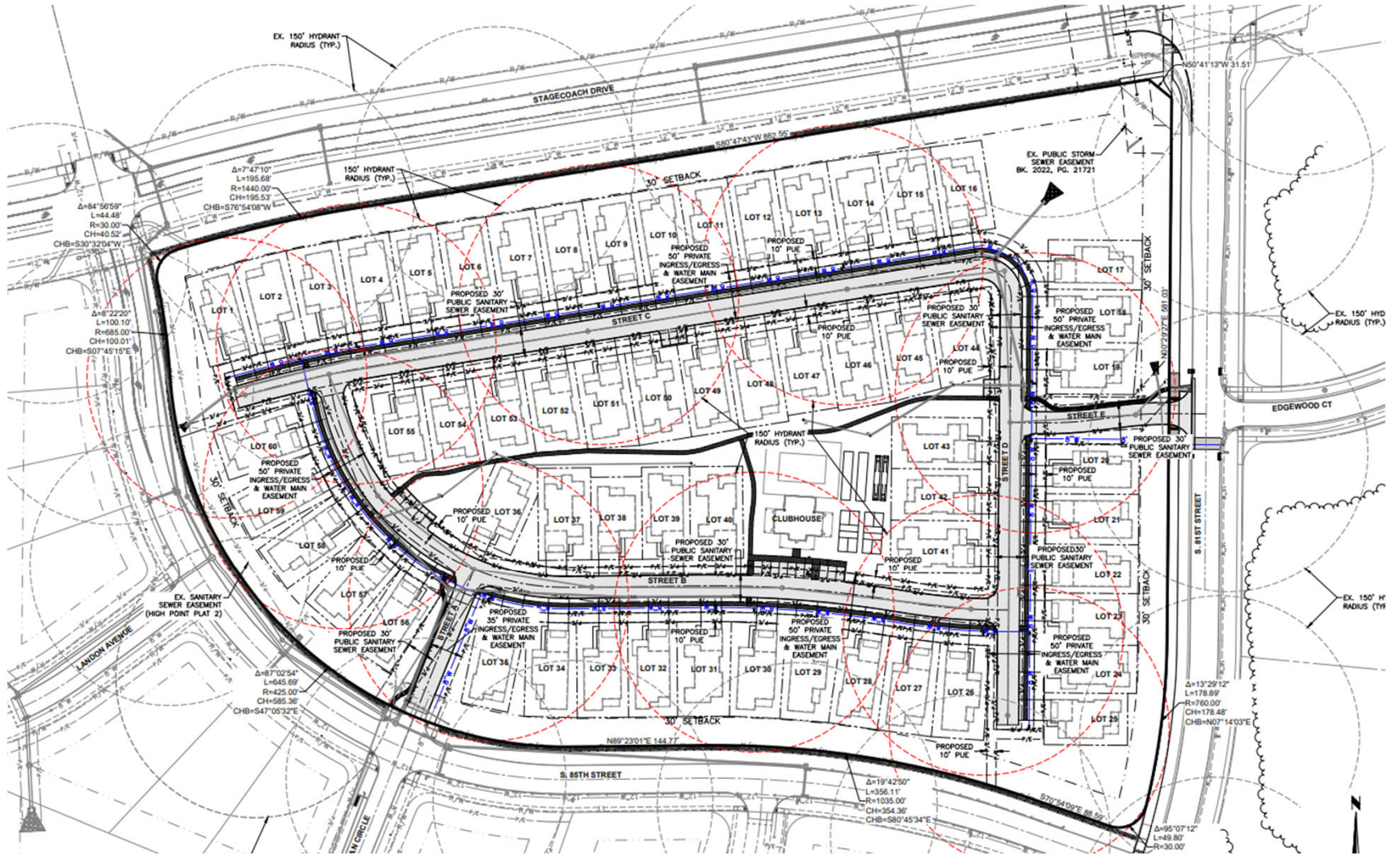
Item f: High Point



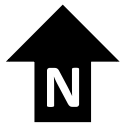
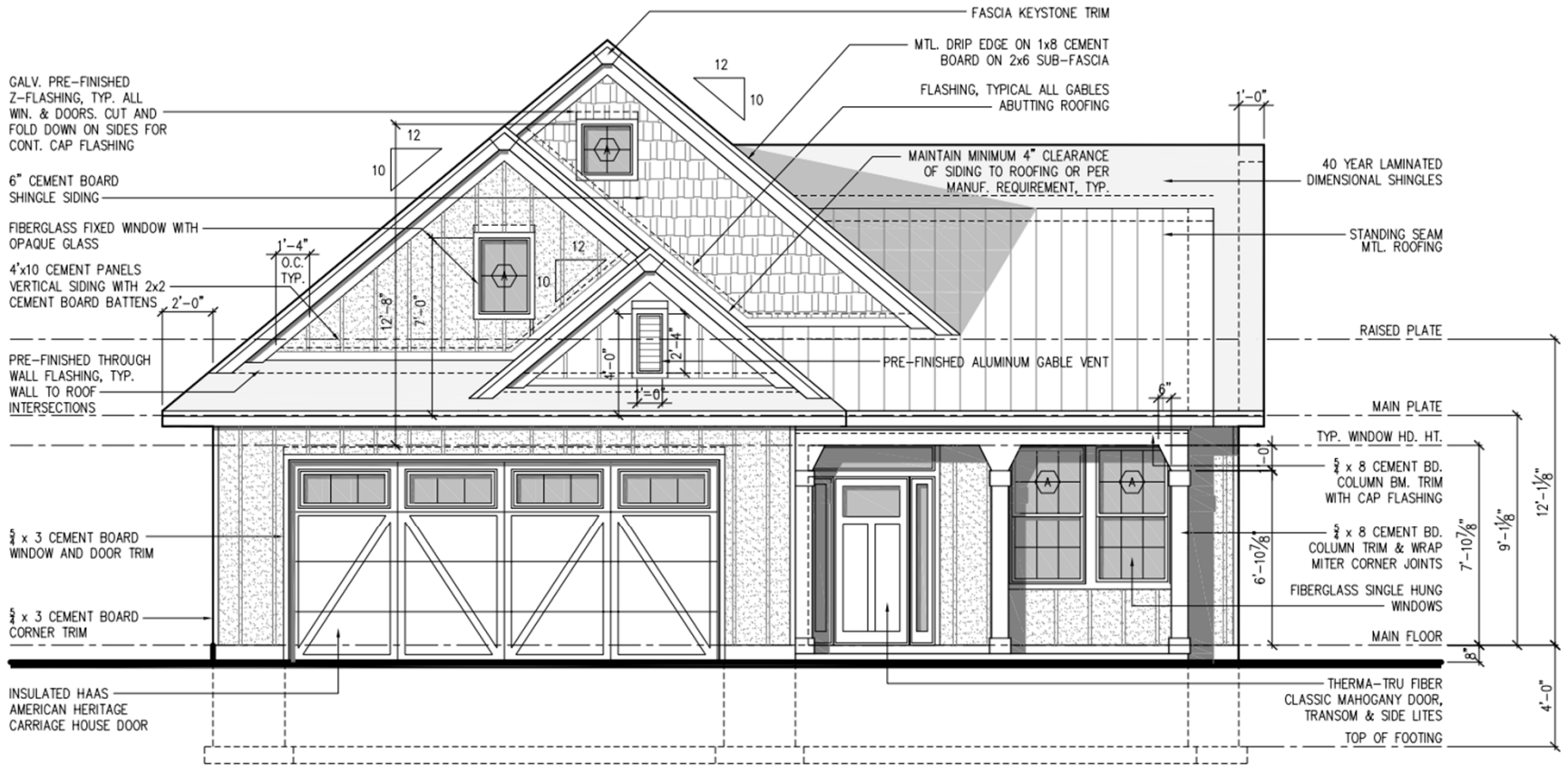
Item f: High Point



Item g: Amare Vita



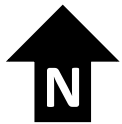
Item g: Amare Vita



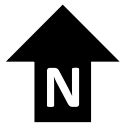
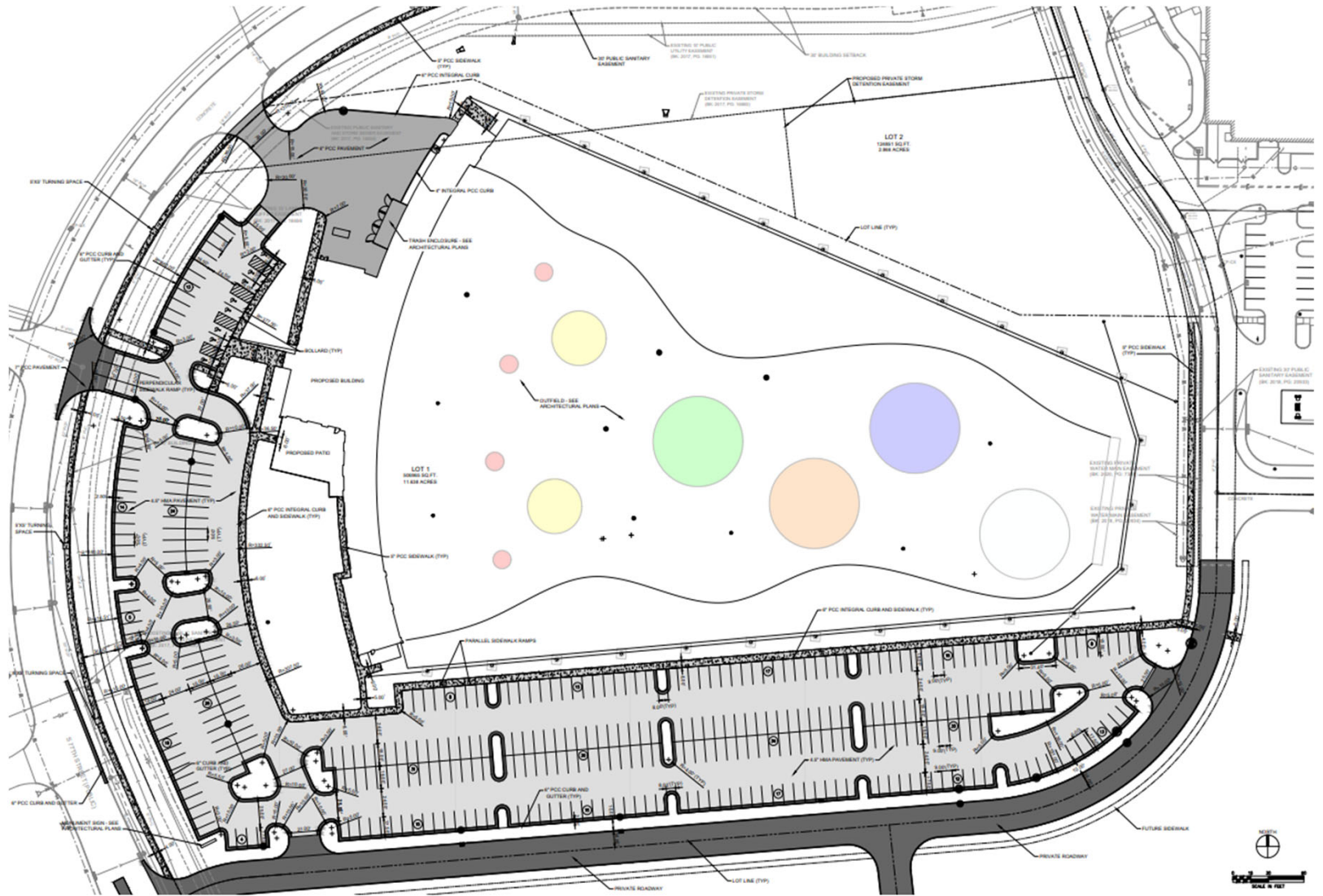
Item h: *Top Golf*



Item h: *Top Golf*



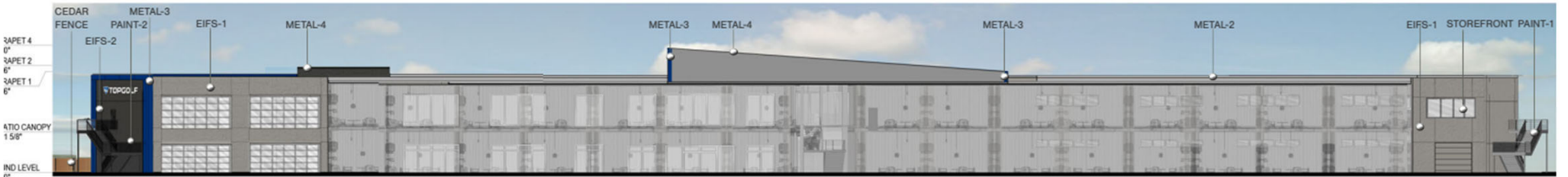
Item h: *Top Golf*



Item h: Top Golf



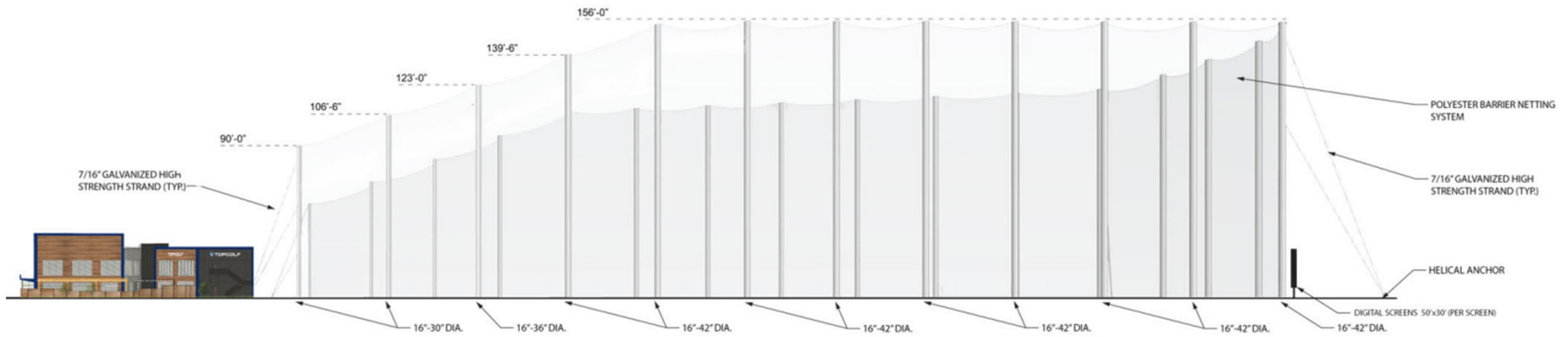
Front Elevation



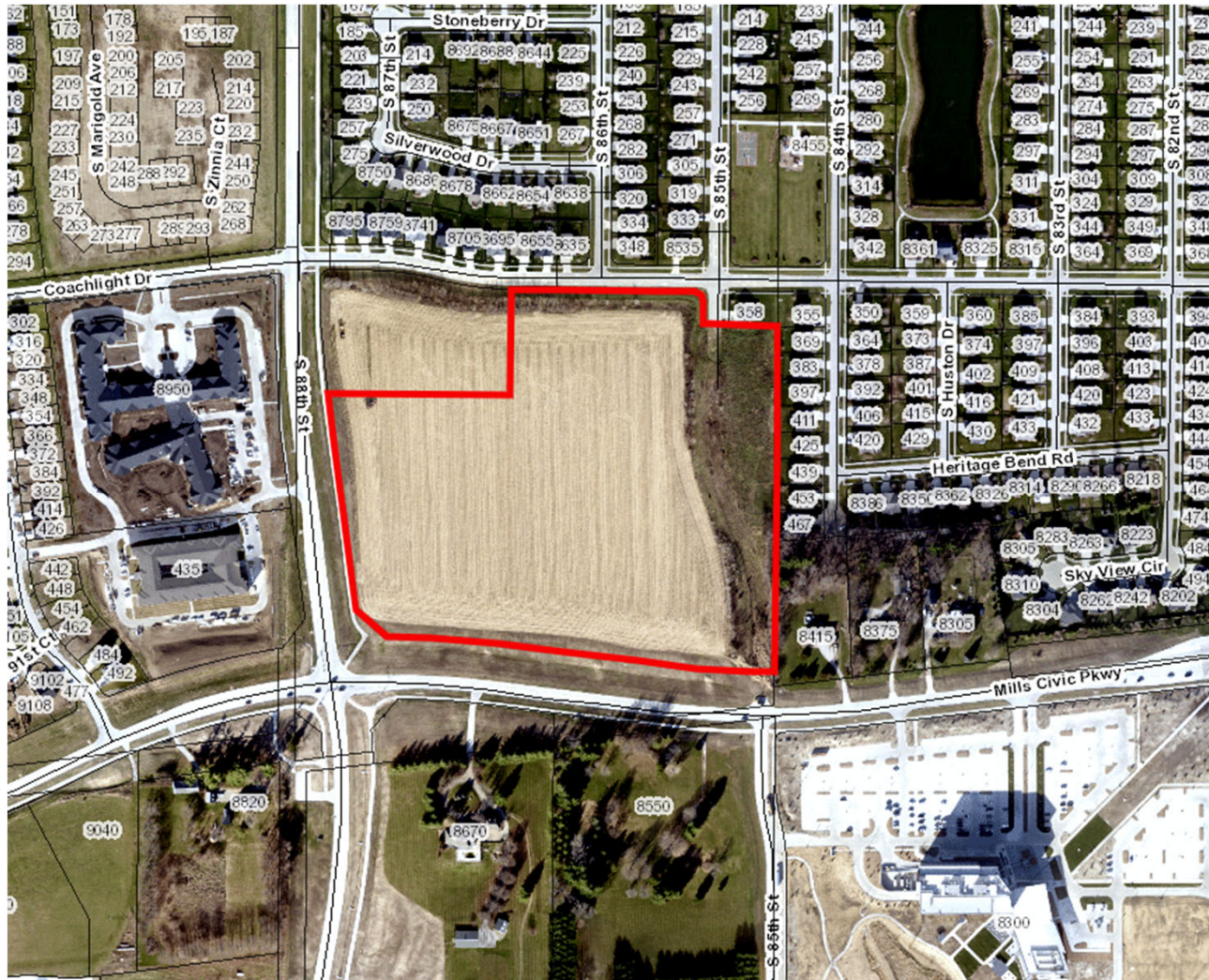
Rear Elevation



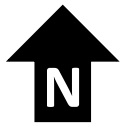
Item h: *Top Golf*



Item i: *Picket Fence Communities*



Item i: Picket Fence Communities



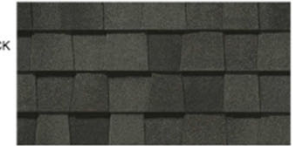
Item i: *Picket Fence Communities*

SHIVEPATTERY
ARCHITECTURE • ENGINEERING



FRONT ELEVATION

- CERTAINTED LANDMARK PRO - MAX DEF MOIRE BLACK
- HARDIE PANEL SELECT CEDARMILL BOARD & BATTEN PREFINISHED SIDING - BOOTHBAY BLUE
- HARDIE PLANK - SELECT CEDARMILL PREFINISHED LAP SIDING - ARCTIC WHITE
- EDWARD'S STONE STE. GEN DIMENSIONAL THIN NATURAL STONE



MOIRE BLACK



ARCTIC WHITE

BOOTHBAY BLUE



RIGHT SIDE ELEVATION



LEFT SIDE ELEVATION



BACK ELEVATION

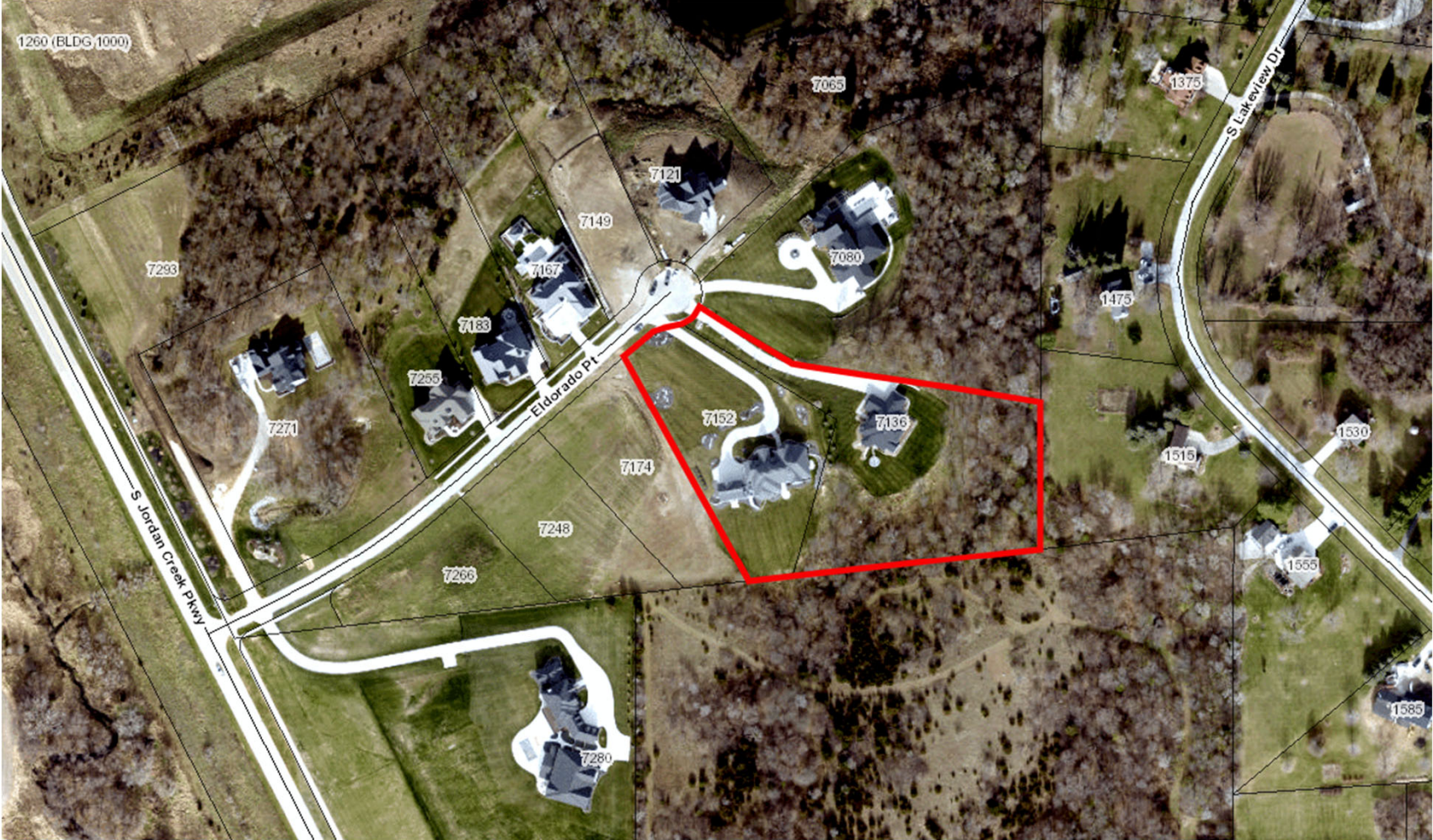


STE. GEN DIMENSIONAL

8-PLEX
PICKET FENCES
88TH & MILLS



Item i: Parcel 22-86 & Parcel 22-87



Item i: Parcel 22-86 & Parcel 22-87

