



March
2024

West Des Moines eNewsletter

Sign up for the latest news and events from your City

Did you know you can have notices about City activities, jobs, news releases, meetings, construction updates and much more sent right to your inbox?

All you have to do is sign up for eUpdates and select the news you're interested in receiving!

Just visit www.wdm.iowa.gov and hover over **I WANT TO...** in the top horizontal dark green menu bar. Then go to **Sign up for ...** and click on **eUpdates**, enter your name and email address, and select the items you want to receive.

Our system will then send you a confirmation email, so make sure you respond and confirm your selections. It's always a good idea to check your junk folder in case emails don't come directly to your regular inbox.

Our eUpdate system makes it easy to stay informed about items that matter to you! And remember, you can change your preferences or opt out at any time!



Connect with us!

www.wdm.iowa.gov



Pedestrian Hybrid Beacons and your safety!

In an effort to make it easier and safer to walk or bike in West Des Moines, the City has installed multiple Pedestrian Hybrid Beacons (PHBs) around town.

You may have seen these beacons at the following locations:

1. 39th Street & EP True Parkway
2. 41st Street/WDM Library & Mills Civic Parkway
3. 50th Street & Wistful Vista Drive
4. 52nd Street & EP True Parkway
5. 65th Street & Ashworth Road
6. 78th Place & EP True Parkway

A PHB is a pedestrian crossing device that is used to assist people with safely crossing busy streets. For much of the day, it remains dark. It only oper-

ates when it is activated by a pedestrian or a bicyclist. According to the Federal Highway Administration, a PHB can reduce auto-pedestrian crashes by nearly 70%, with drivers yielding to pedestrians at much higher rates than at traditional crosswalks.

Due to their cost, PHBs cannot be located at every crosswalk. The cost of a PHB can range from \$75,000-\$125,000, depending on the location and design. As a result, PHBs are generally considered for crosswalks that have a high amount of pedestrian/bike traffic (such as trails and school crossings) that cross a busy street where a traditional traffic signal is not justified.

In addition to the PHBs already installed, more PHBs are being considered as West Des Moines continues to look for ways to improve mobility and safety for all road users.

See Page 3 for directions about how Drivers and Pedestrians use Pedestrian Hybrid Beacons!

A pedestrian uses the PHB near the WDM Library to cross Mills Civic Parkway.



HOW TO USE THE PEDESTRIAN HYBRID BEACON



DRIVERS



PEDESTRIANS

SEE THIS

DO THIS

SEE THIS

DO THIS



GO!



PUSH THE BUTTON
STOP & WAIT for
"WALK" signal

FLASHING



SLOW DOWN
(Pedestrian has activated the push button)

FLASHING



START CROSSING
WATCH FOR CARS!



Prepare to
STOP



FINISH CROSSING



STOP!
For Pedestrian

FLASHING



STOP!
Proceed with
Caution if Clear



Diagram Courtesy of the City of Lakeland, Florida

It's not spring yet ... so watch forecasts for snow



It is Iowa, so it's very possible we could still see snow in March! Please continue to check for a Snow Parking Ban when a snow event occurs:

1. [Sign up for text or e-mail alerts at www.wdm.iowa.gov/eNotification](http://www.wdm.iowa.gov/eNotification).
2. Follow the City of West Des Moines - City Manager's Office on Facebook.
3. Call the Snow Hotline at (515) 273-0766.
4. [Check the City's website at www.wdm.iowa.gov](http://www.wdm.iowa.gov) for an alert banner (across the top of the page) and a News article (at the bottom of the page).

Your snowplow drivers want to say **THANK YOU...**

- ◆ For giving us plenty of room on the road!
- ◆ For being patient as we clean up from winter storms and snow!
- ◆ For making sure your vehicles aren't parked on the street when it snows so we can clear our roadways!



See a pothole or curb damage? Let us know!



This time of year, when there is significant snow melt and temperatures freeze and thaw, the pavement begins to crack and break apart. Any turf or curb damage caused from snow removal operations also becomes evident.

Public Services crews are always on the lookout for these issues when they are out in the field, but it's impossible for them to patrol every street in the City. That's why we need your help.



[If you see a pothole or turf or curb damage, you can report it by using the City's online service desk, SeeClickFix.](#) The app can be downloaded on your Android or iPhone, making it a quick and easy way to report these issues.

Where can I get a Compost It! Cart or Sticker?

Temperatures are starting to warm up, and with that, you might be thinking about cleaning up your yard.

Yard waste collection begins on your normal trash collection day the week of April 1st. Compost It! Cart purchases are now exclusively handled through Metro Waste Authority.

[Request a cart through Metro Waste Authority by visiting their website](#) or by calling 515-244-0021.

Renewal stickers for residents already enrolled in the Compost It! Program are still available for purchase at Public Services West (8850 Grand Avenue) and City Hall (4200 Mills Civic Parkway) during regular business hours. The cost of a renewal subscription is \$122.



Parks and Recreation enthusiasts are invited to join the Friends of WDM Parks and Recreation, a group that has been formed to support the development and enhancement of public parks, facilities and recreation programs in West Des Moines!

To become a member, visit the Friends website at www.wdm.iowa.gov/FriendsofWDMPR.

2024 Solid Waste Events for WDM Residents

Spring Cleanup is June 3 – 7 on your regular trash collection day!

→ April 1	Yard Waste Pickup begins on your normal trash collection day
→ April 13	Scrap Tire Drop-off, 7:30 a.m. – 4 p.m. West Des Moines Public Services East, 560 S. 16th Street
May 23	National Public Works Week Celebration, 4 p.m. to 7 p.m. Valley Junction Farmer’s Market
June 3-7	Spring Cleanup – on your regular trash day. Watch for details! No appliances accepted (see June 8 event).
June 8	Scrap Appliance, Metal Drop-off, 8 a.m. – 12:00 (noon), West Des Moines Public Services East, 560 S. 16th Street
September 7	Scrap Appliance, Metal Drop-off, 8 a.m. – 12:00 (noon), West Des Moines Public Services East, 560 S. 16th Street
November 30	Yard Waste Pickup Ends
Dec. 30, 2024 – Jan. 11, 2025	Winter Yard Waste & Christmas Tree Collection



Construction Updates



[Visit the City’s website to learn more about Engineering and Parks and Recreation projects under construction.](#)

[Drone footage is also available on the City’s YouTube Channel.](#)

Just scroll down to the Engineering Services section to view our videos.



Blood pressure monitors now available for checkout

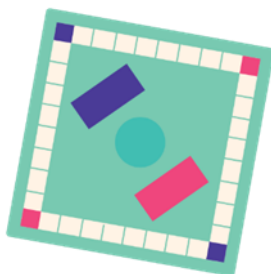
The WDM Public Library is proud to partner with the American Heart Association on their "Libraries with Heart" initiative.

Through this program, patrons can now check out one of three Blood Pressure Monitor kits to track their heart health.

These kits can be checked out at the 2nd Floor Adult Services Desk for three weeks with your WDM library card. Additionally, there will be a model on display to try out at the desk.



See Upcoming Event Highlights below. Registration for March events opens at 9:00 AM on Friday, March 1.



Spring Break Board Games

Monday, March 11: 1:00 PM - 4:00 PM (All Ages)

Start your Spring Break week with a fun afternoon of board games at the library. Join us anytime between 1:00 and 4:00 and choose from a wide selection of games. No registration.



Friday Flicks: The Super Mario Bros. Movie

Friday, March 15: 1:30 PM - 3:00 PM (Rated PG)

Today's movie will be The Super Mario Bros. Movie (Rated PG, 1h 33min). Popcorn and water will be provided, or you may bring your own snack and covered drink (please avoid bringing peanut products to protect our patrons with allergies). No registration.



Author Event: Beth Hoffman

Tuesday, March 26: 6:45 PM - 8:00 PM (Adults)

The Friends Foundation is proud to present local author Beth Hoffman. Beth is the author of *Bet the Farm: The Dollars and Sense of Growing Food in America*, a first-hand account of the perils of farming today and a personal exploration of more just and sustainable ways of producing food. No registration.

LIHEAP application deadline: April 30

The Low-Income Home Energy Assistance Program (LIHEAP) is a federal program established to help qualifying low-income Iowa homeowners and renters pay for a portion of their primary heating costs.

This is a one-time credit that households can reapply for each year.

If you live in western Polk County and are interested in applying for LIHEAP, please contact West Des Moines Human Services at 515-222-3660 to

apply. You will be told at the time of your application whether you are eligible and if so, for what amount you qualify.



The application deadline is April 30th.

Dallas County residents, please call New Opportunities at 515-465-5185 to apply.

[View the documents you need to apply.](#)

[View the income guidelines for the program.](#)

Discounted pool passes for low-income households



Reduced rate season pool passes are available through West Des Moines Human Services to income-eligible residents of West Des Moines. Registration begins April 1st.

The reduced rate is \$40 for the first household member plus \$10 for each additional person. The passes allow admittance to the following pools: Holiday Park Aquatic Center, Valley View Aquatic Center, and Clive Aquatic Center.

Please call 515-222-3660 or [visit our website to learn more about reduced rate pool passes.](#)



Vacations and business travel make hotels and motels our home away from home. It is just as important to be prepared and know what you would do in a hotel/motel emergency as it is in your own home.

BE SAFE WHEN TRAVELING!

- Choose a hotel/motel that is protected by both smoke alarms and a fire sprinkler system.
- When you check in, ask the front desk what the fire alarm sounds like.
- When you enter your room, review the escape plan posted in your room.
- Take the time to find the exits and count the number of doors between your room and the exit. Make sure the exits are unlocked. If they are locked, report it to management right away.
- Keep your room key by your bed and take it with you if there is a fire.
- If the alarm sounds, leave right away, closing all doors behind you. Use the stairs — never use elevators during a fire.
- If you must escape through smoke, get low and go under the smoke to your exit.

If You Can't Escape...

SHUT off fans and air conditioners.

STUFF wet towels in the crack around the doors.

CALL the fire department and let them know your location.

WAIT at the window and signal with a flashlight or light colored cloth.

FACTS

- ❗ On average, one of every **14 hotels** or motels reported a structure fire each year.
- ❗ The majority of hotel fire deaths result from fires that started in the **bedroom**.
- ❗ **Cooking** is the leading cause of hotel/motel fires.



NATIONAL FIRE PROTECTION ASSOCIATION
The leading information and knowledge resource on fire, electrical and related hazards

