

Welcome to the May 6, 2024, Development & Planning Council Subcommittee

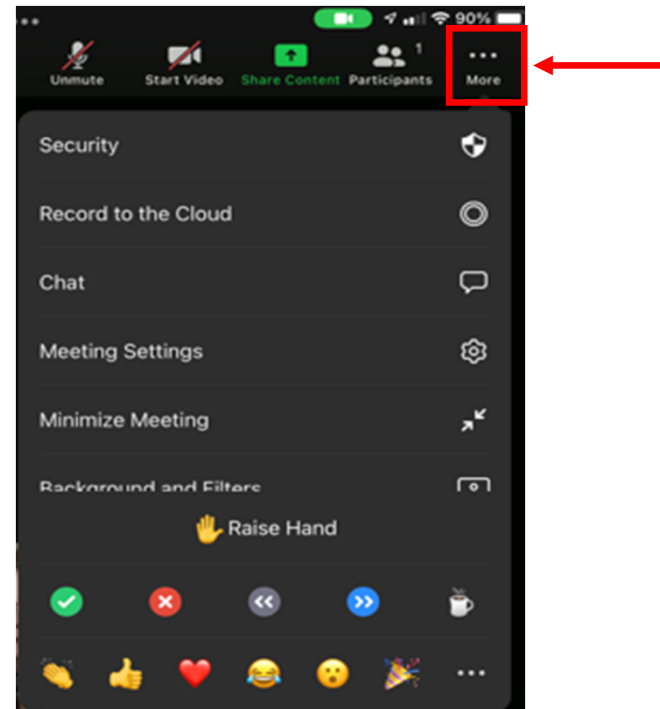
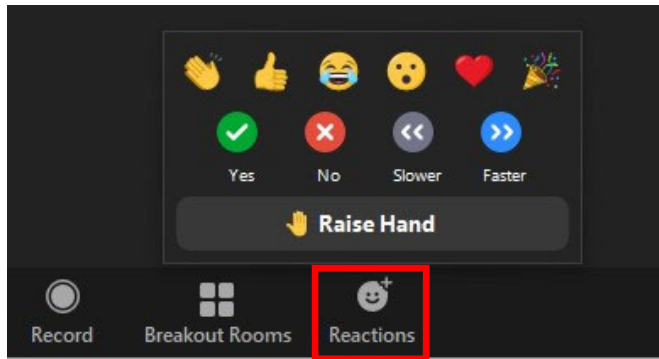
Here are a few housekeeping items before we get started:

- You will be muted by default when joining the meeting.
- If you would like to comment, please raise your hand to indicate you wish to speak. The Subcommittee Chair will then call on you and you will be unmuted.
- **If you are participating by phone, dial *9 to raise or lower your hand, dial *6 to unmute or mute**
- **If you are participating by computer or tablet:**



Raise Hand:

Depending on your device, Raise Hand can be found in the Reactions or the More (...) button on the Zoom toolbar:



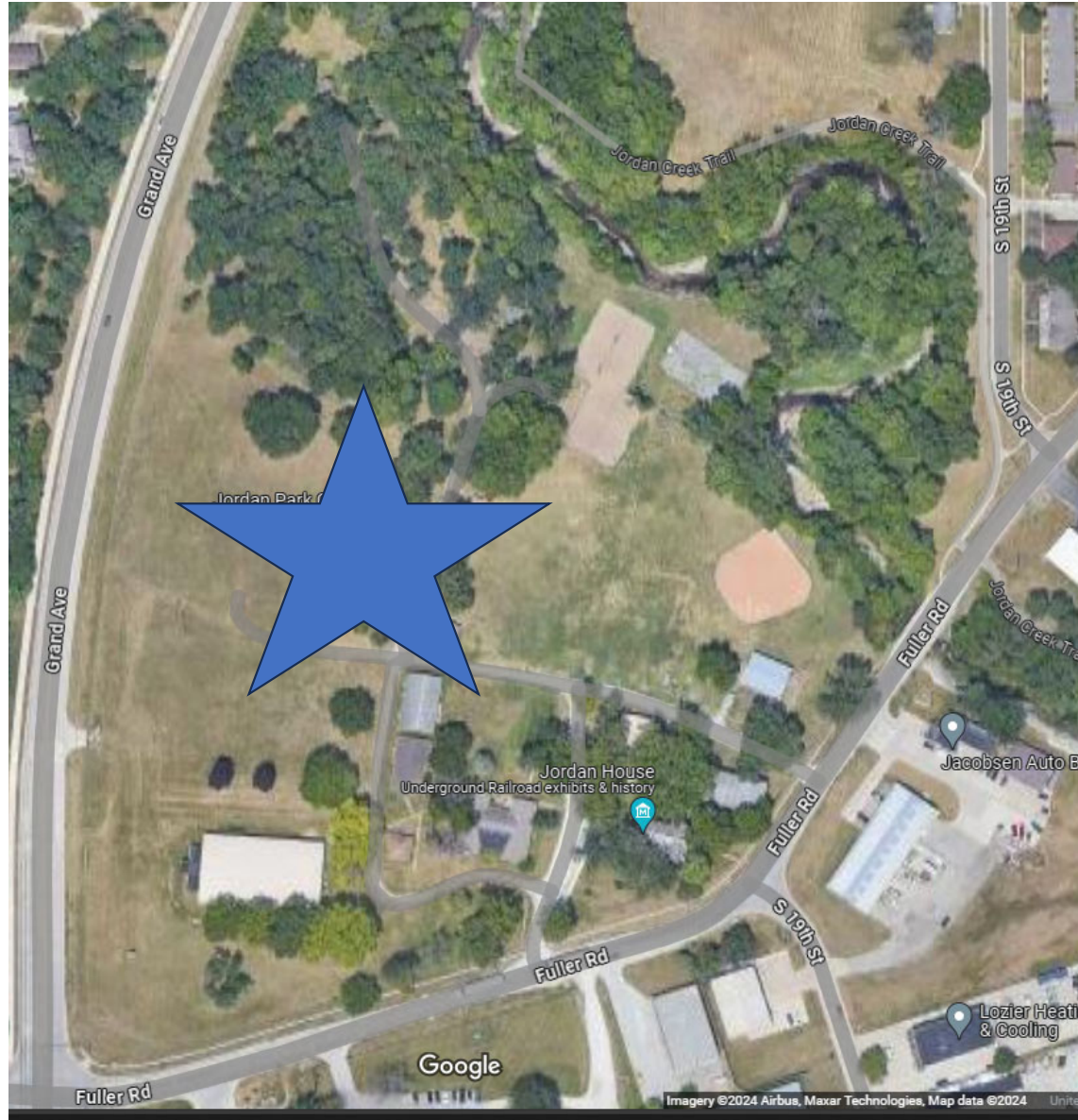
Upcoming Projects

To participate on this item:

- The Subcommittee Chair will first have staff present explain the project.
- Please "raise your hand" to indicate that you wish to speak.
- The Chair will then call on you and you can unmute.
- **If you are participating by phone, dial *9 to raise or lower your hand, dial *6 to mute/unmute**
- **If you are participating by computer or tablet, the raise your hand and mute/unmute functions can be found on the Zoom toolbars**
- Please note, it is entirely at the Chair's discretion to limit the length of time that individuals may speak, as well as whether to allow individuals to speak a second time.

When you unmute – please state your name and address for the record before you make your comments.

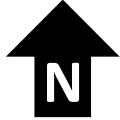
Item a: Legacy Woods Arboretum



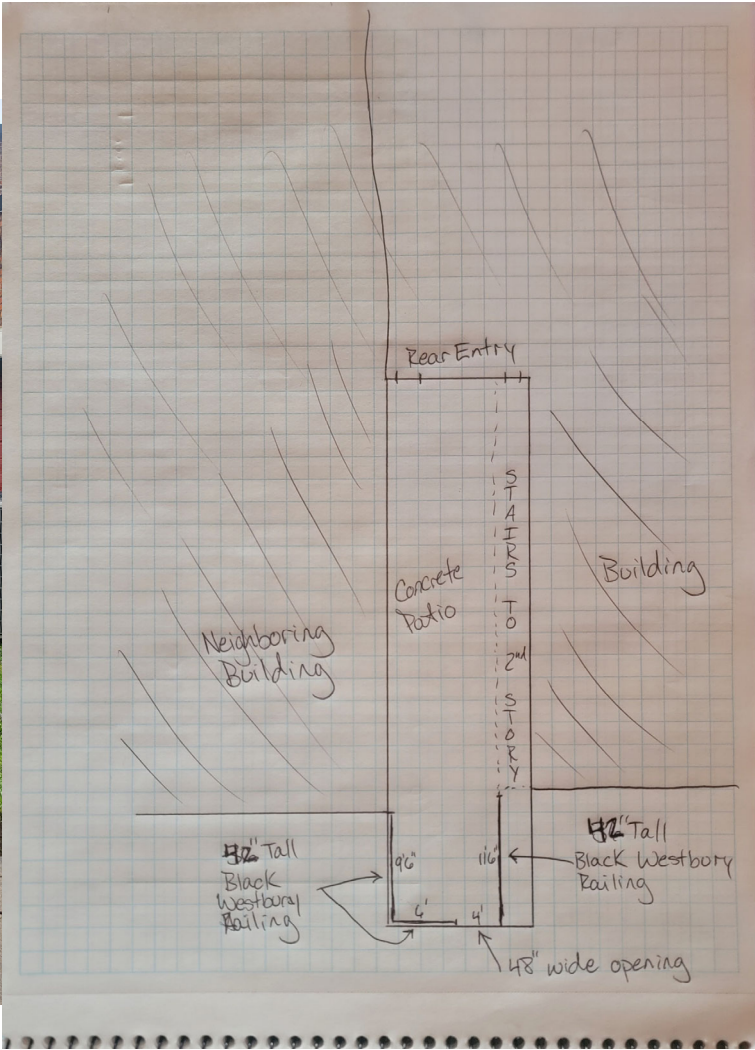
Item a: Legacy Woods Arboretum



Item b: Winchester Public House

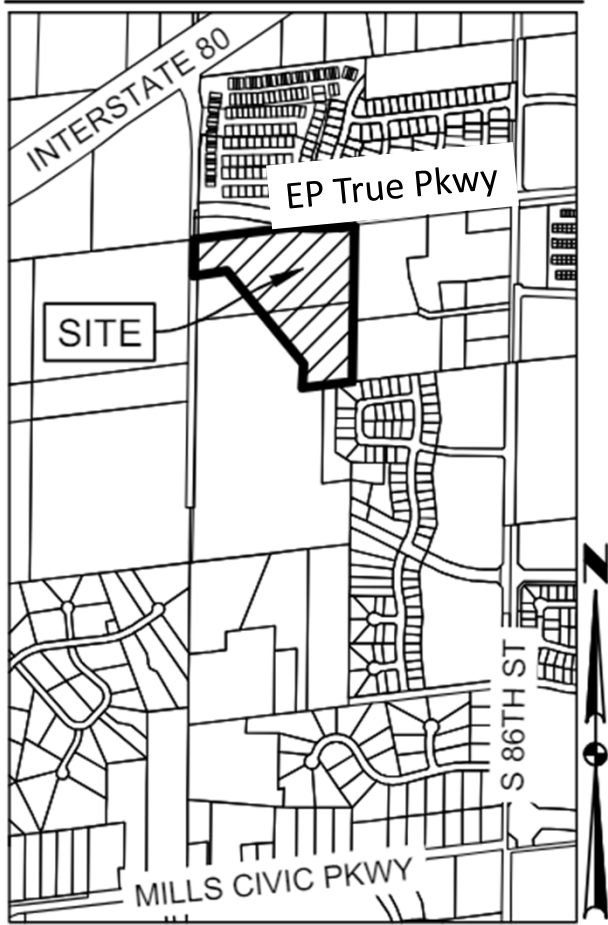


Item b: Winchester Public House

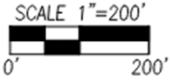
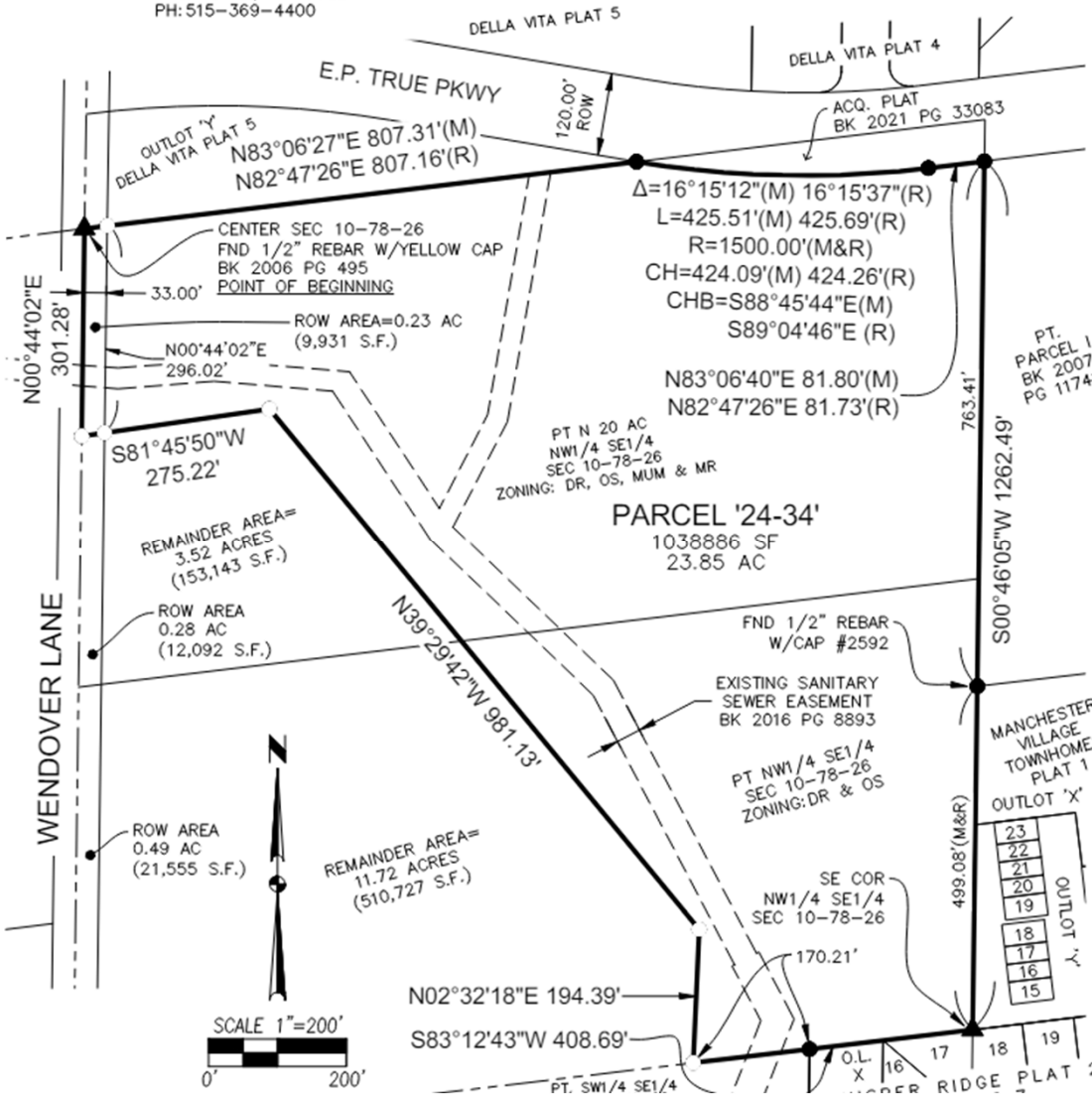


Item c: Pavilion Park Plat of Survey

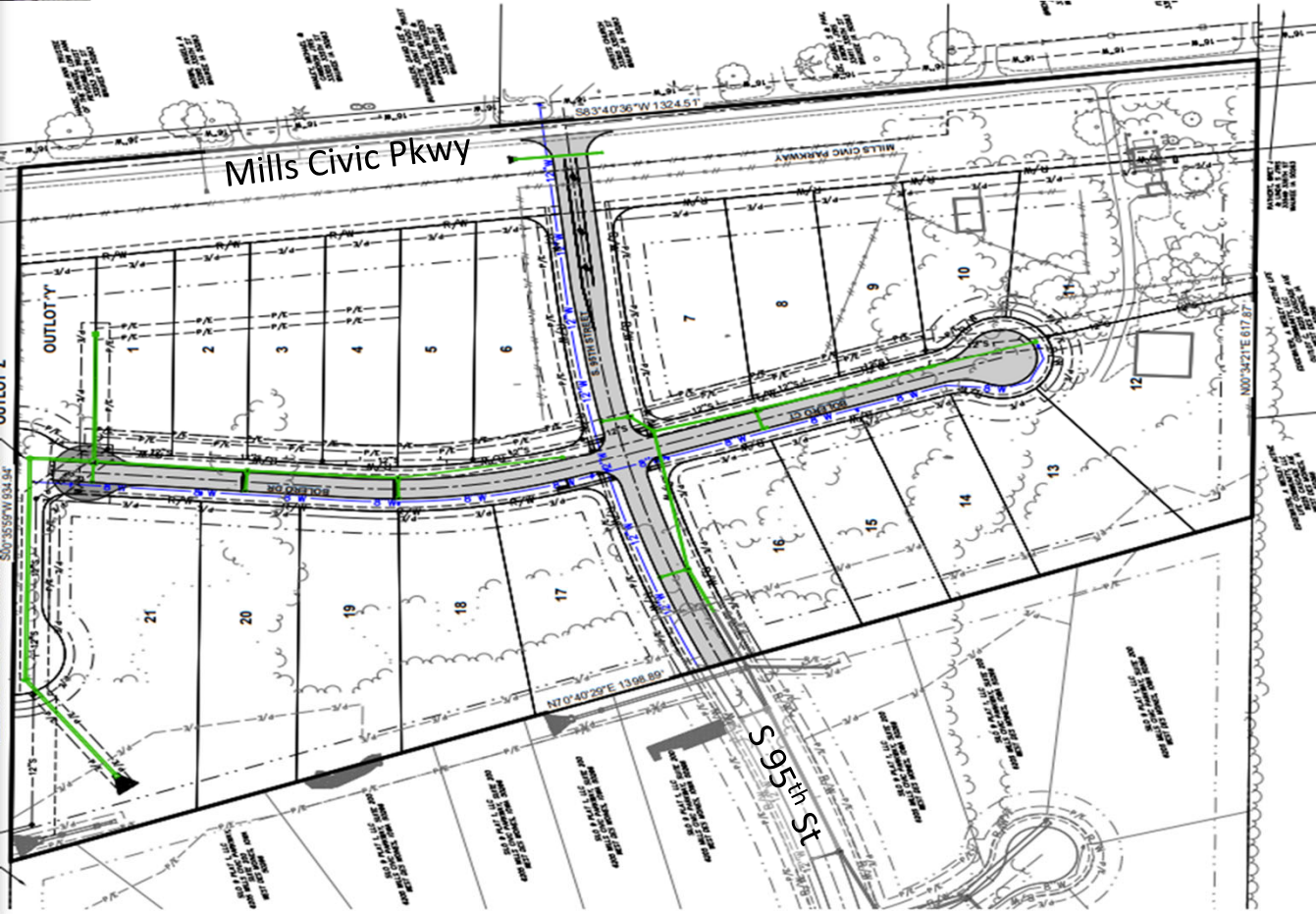
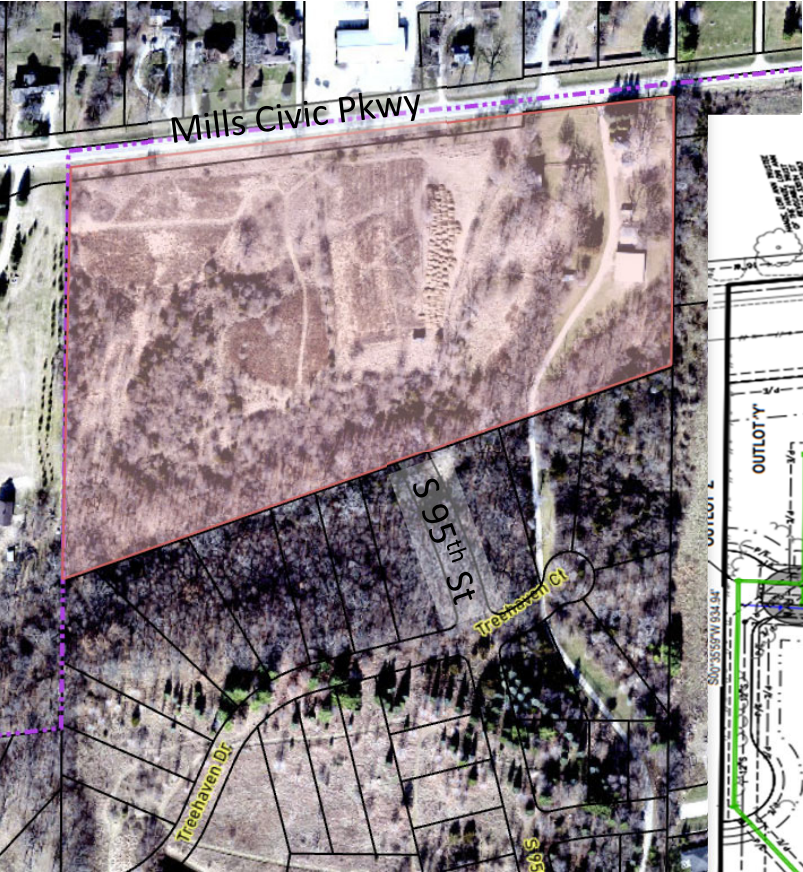
VICINITY MAP



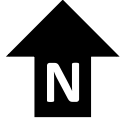
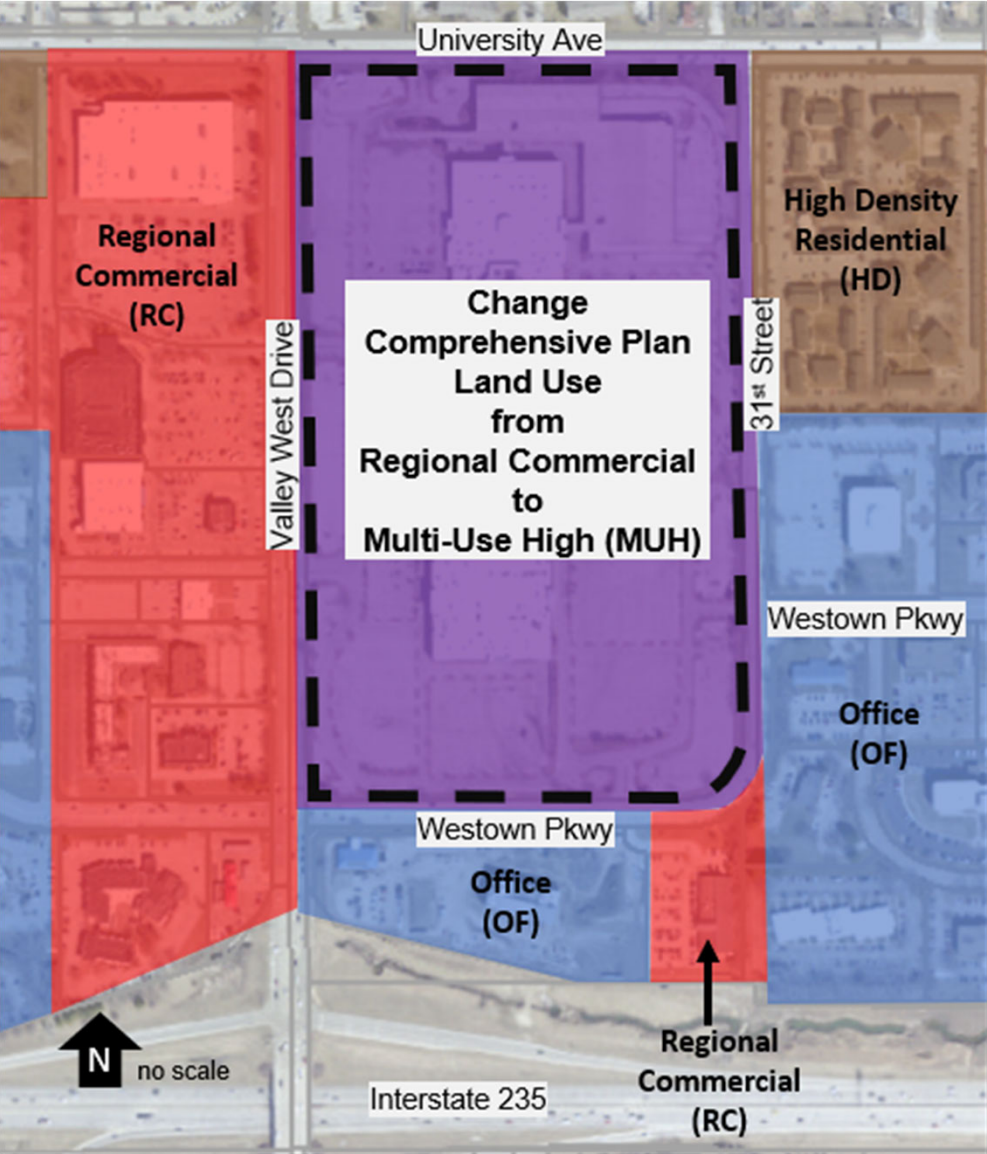
URBANDALE, IA 50322
PH: 515-369-4400



Item d: Woodland Estates Plat 4



Item e: Valley West Mall



Item f: Prime 39



Item f: Prime 39



4 RIGHT ELEVATION
SCALE: 3/16" = 1'-0"



2 REAR ELEVATION
SCALE: 3/16" = 1'-0"



1 LEFT ELEVATION
SCALE: 3/16" = 1'-0"



3 FRONT ELEVATION
SCALE: 3/16" = 1'-0"

