

Welcome to the June 19, 2024, West Des Moines Board of Adjustment Meeting

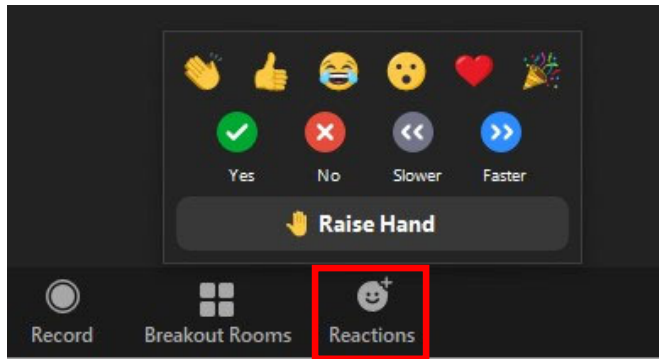
Here are a few housekeeping items before we get started:

- You will be muted by default when joining the meeting. The Commission Chair will first ask for the applicant's and then staff's presentation on an agenda item. After the applicant and staff have presented, the Chair will ask for public comment. At this point, please raise your hand to indicate you wish to speak. The Chair will then call on you and you will be unmuted.
- **If you are participating by phone, dial *9 to raise or lower your hand, dial *6 to unmute or mute**
- **If you are participating by computer or tablet:**



Raise Hand:

Depending on your device, Raise Hand can be found in the Reactions or the More (...) button on the Zoom toolbar:



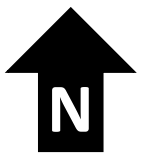
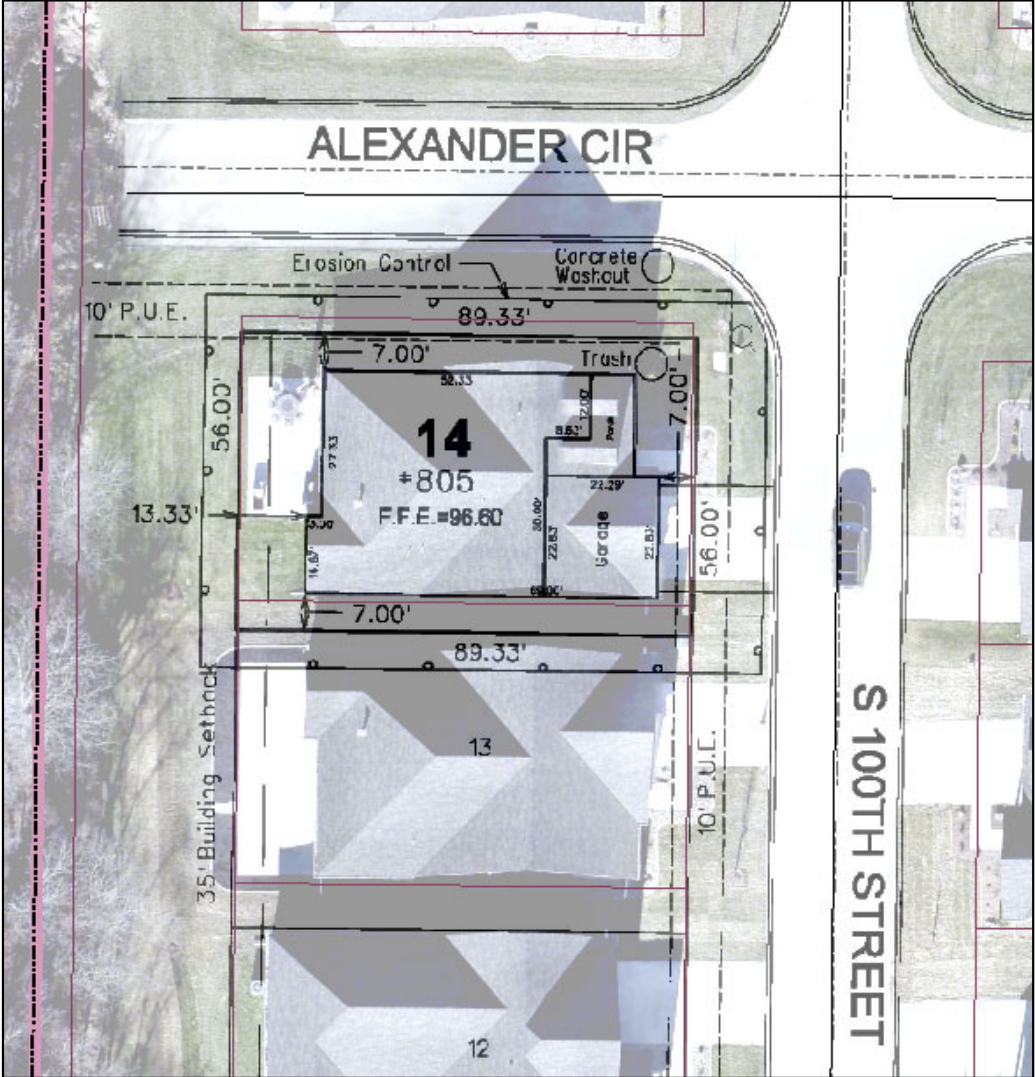
Item 3a – 805 S 100th Street
Approval of Zoning Exception of Required Setbacks

To participate on this item:

- The Chair will first have the applicant present on the agenda item and will then ask for public comment on the item.
- Please "raise your hand" to indicate that you wish to speak.
- The Chair will then call on you and you will be unmuted.
- **If you are participating by phone, dial *9 to raise or lower your hand, dial *6 to mute/unmute**
- Please note, it is entirely at the Chair's discretion to limit the length of time that individuals may speak, as well as whether to allow individuals to speak a second time.
- When a motion is made and a vote is called for, ONLY the Board members vote.

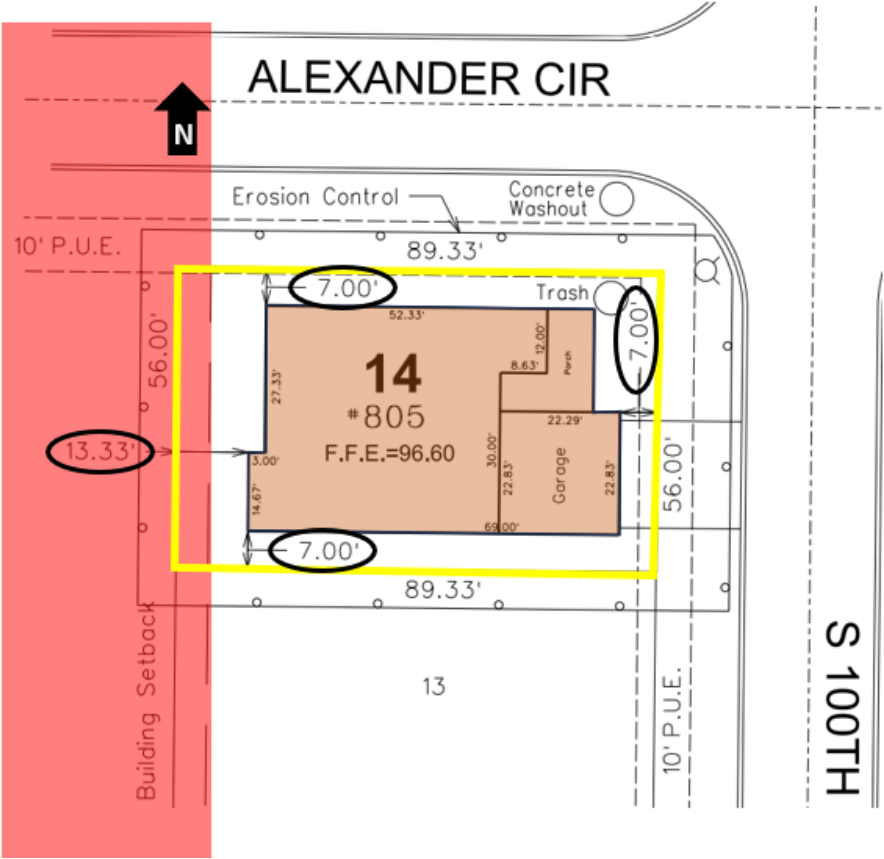
**When you are unmuted –
please state your name and address for the record before you make your comments.**

Item 3a – 805 S 100th Street



Item 3a – 805 S 100th Street

Yellow line = footprint lot boundary: red shaded area = 35' perimeter setback



Item 3a – 805 S 100th Street – Zoning Exception

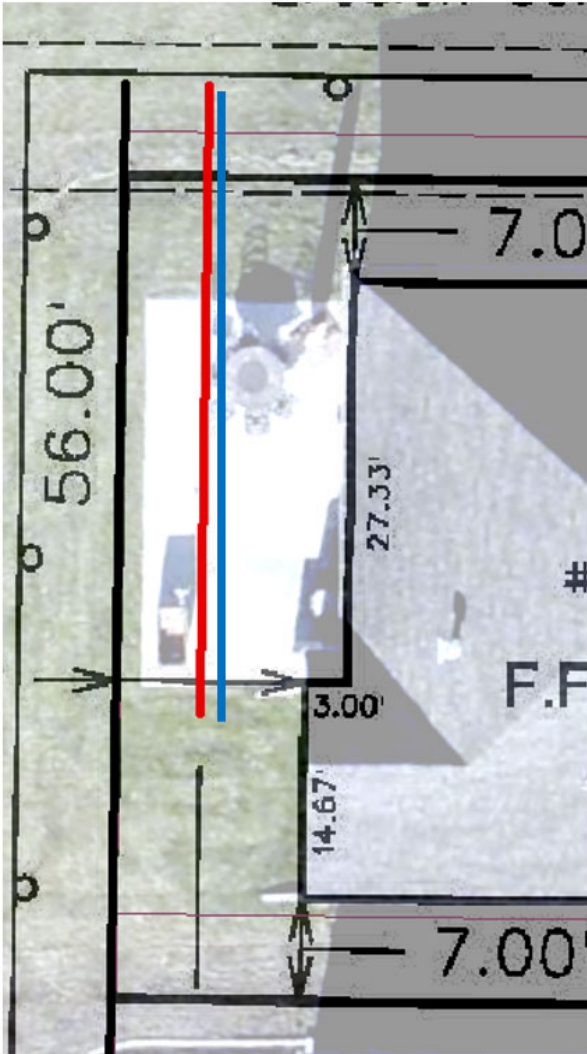


Illustration Only

Thicker Black Line is Footprint lot Boundary

Red Line is Perimeter Setback which overlays Footprint lot rear yard setback (six (6) feet)

Blue Line is footprint lot rear yard setback (seven (7) feet for structures over 30 inches in height)

Space in between red and blue lines (one (1) foot) is requested exception amount to extend pergola to red line

