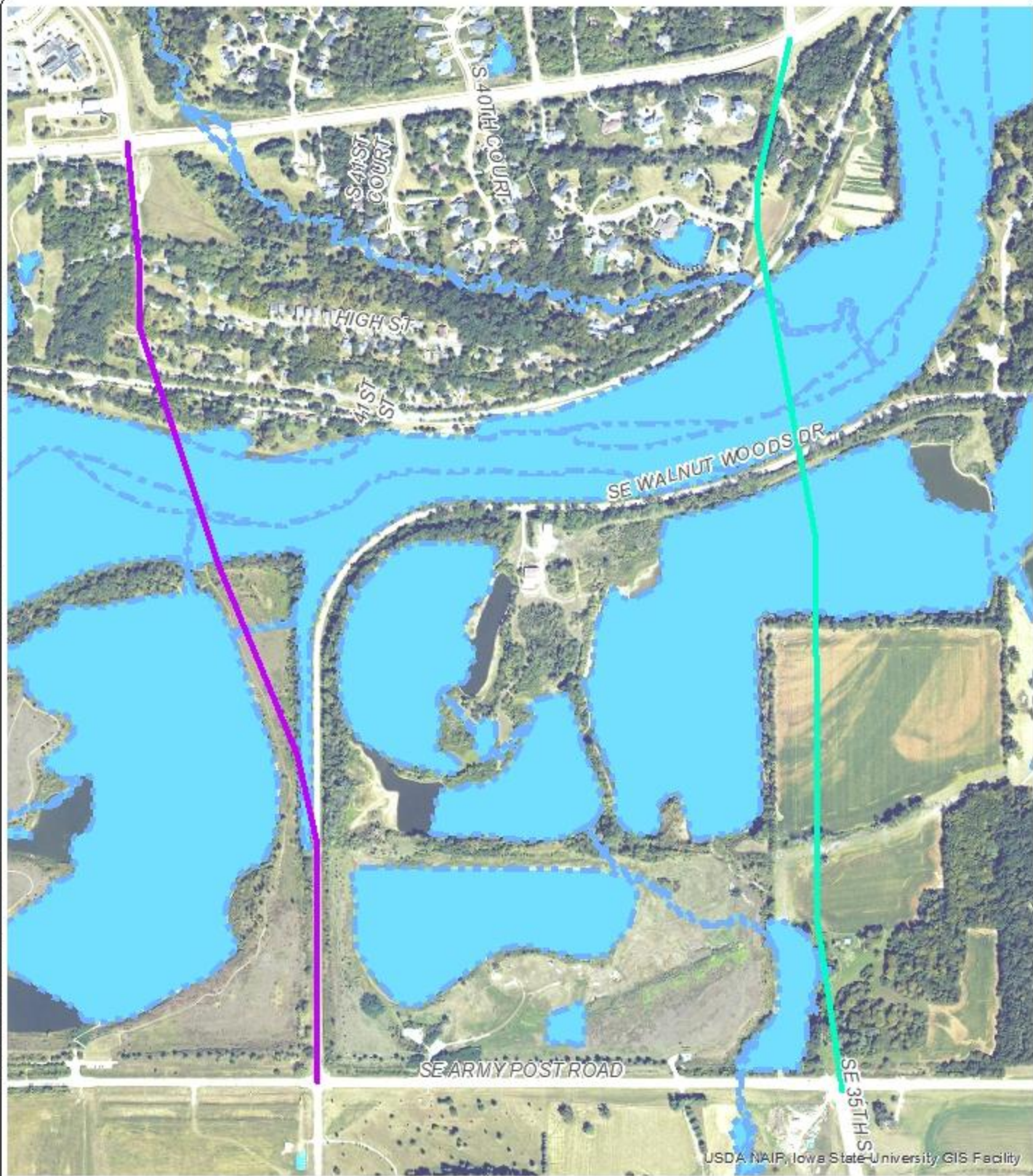


Document Path: X:\DIME\Projects\24W00X\24W00X-001\North Bridge Feasibility\GIS\24W00X-001 and 001\Sheet_FIGURE 2.mxd

Document Name: 24W00X-001 and 001 Sheet_FIGURE 2

© 2024 Foth Infrastructure & Environmental, LLC



USDA NAIP, Iowa State University GIS Facility

LEGEND

- S 35th Street Alternative 1
- S 50th St Alternative 1
- Polk County NW



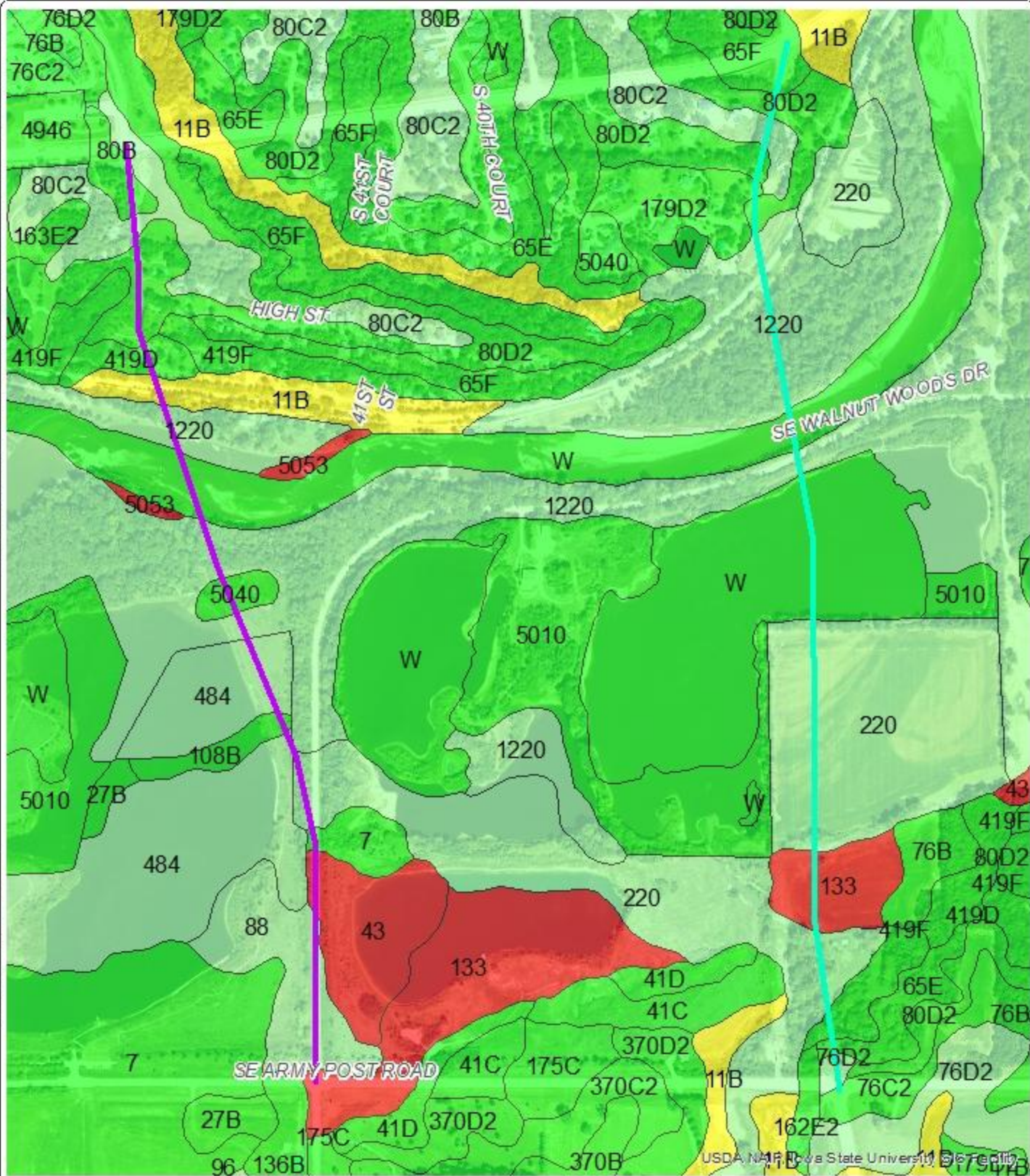
NATIONAL WETLAND INVENTORY MAP
RACCOON RIVER BRIDGE FEASIBILITY STUDY
SOUTH 35TH STREET AND SOUTH 50TH STREET
WEST DES MOINES, IOWA

	PROJECT ID. #: 24W0XX
DATE: 9/24/2024 PREPARED BY: ESM CHECKED BY: HIM	Foth FIGURE NO. 2

Document Path: X:\DRIE\Proposals\24W00XX\GIS\24W00XX\Map\24W00XX_01_FIGURE_3.mxd

Document Name: 24W00XX_01_FIGURE_3

02/27/2024 8:11 AM



LEGEND

- S 35th Street Alternative 1
- S 50th St Alternative 1

**Polk County Hydric Soils
HYDRIC RATING BY MAP UNIT**

- HYDRIC (100%)
- PARTIALLY HYDRIC (33 TO 65%)
- PREDOMINANTLY NONHYDRIC (1 TO 32%)
- NONHYDRIC (0%)



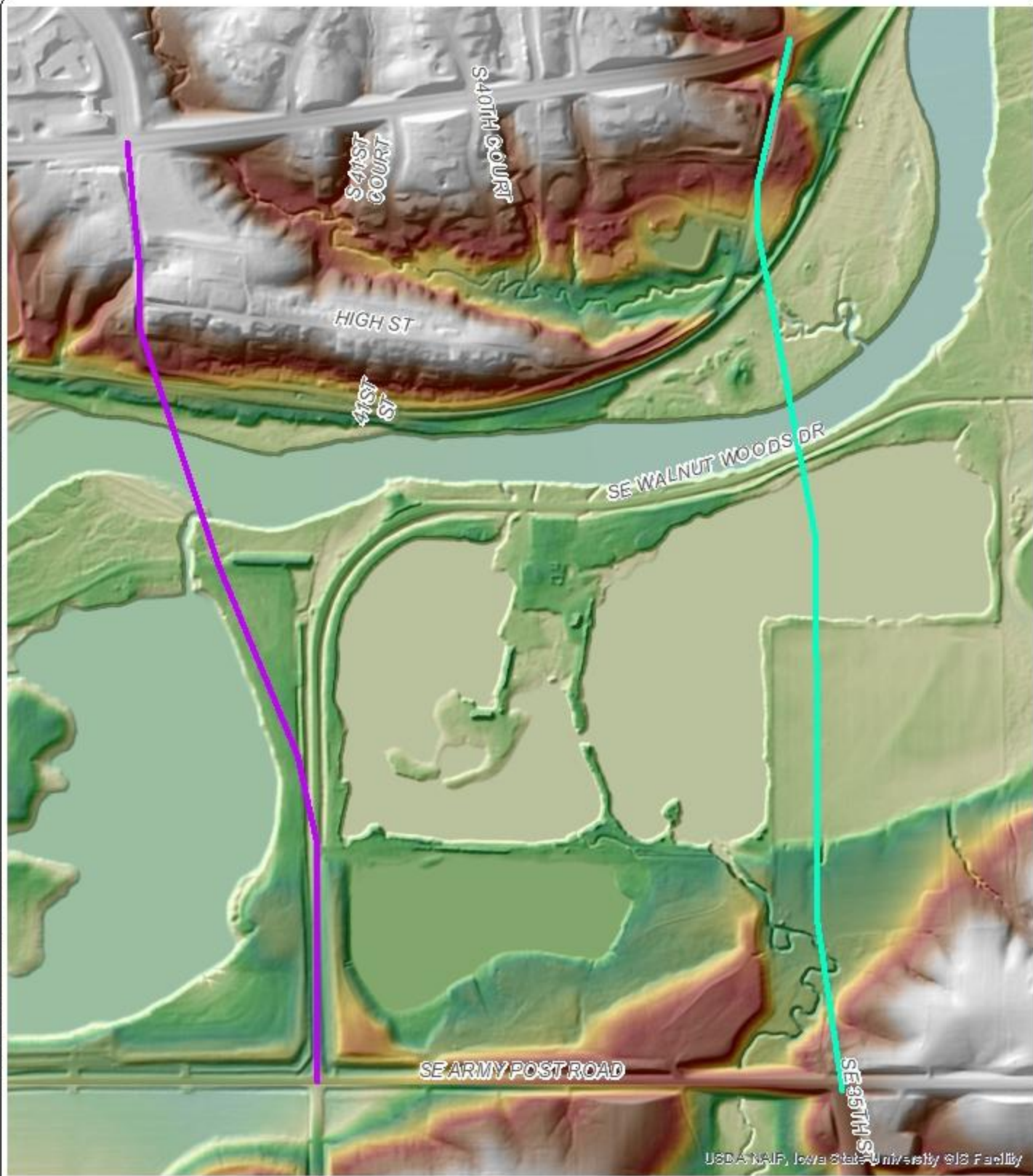
SOIL SURVEY MAP		
RACCOON RIVER BRIDGE FEASIBILITY STUDY SOUTH JORDAN CREEK PARKWAY WEST DES MOINES, IOWA		
		PROJECT ID. #: 24W0XX
DATE: 9/24/2024		FIGURE NO. 3
PREPARED BY: ESM		
CHECKED BY: HIM		

USDA NR Iowa State University

Document Path: X:\DATA\Preparation\GIS\Drawings\Drawings\24W0XX\03 30th and 35th Streets Figure 4.mxd

Document Name: 24W0XX_35th and 30th Streets Figure 4

© 2024 Foth Infrastructure & Environmental, LLC



USDA NAIP, Iowa State University GIS Facility

LEGEND

- S 35th Street Alternative 1
- S 50th St Alternative 1



LIDAR MAP	
RACCOON RIVER BRIDGE FEASIBILITY STUDY SOUTH 35TH STREET AND SOUTH 50TH STREET WEST DES MOINES, IOWA	
	PROJECT ID. #: 24W0XX
DATE: 9/24/2024	
PREPARED BY: ESM	
CHECKED BY: HIM	
FIGURE NO. 4	

